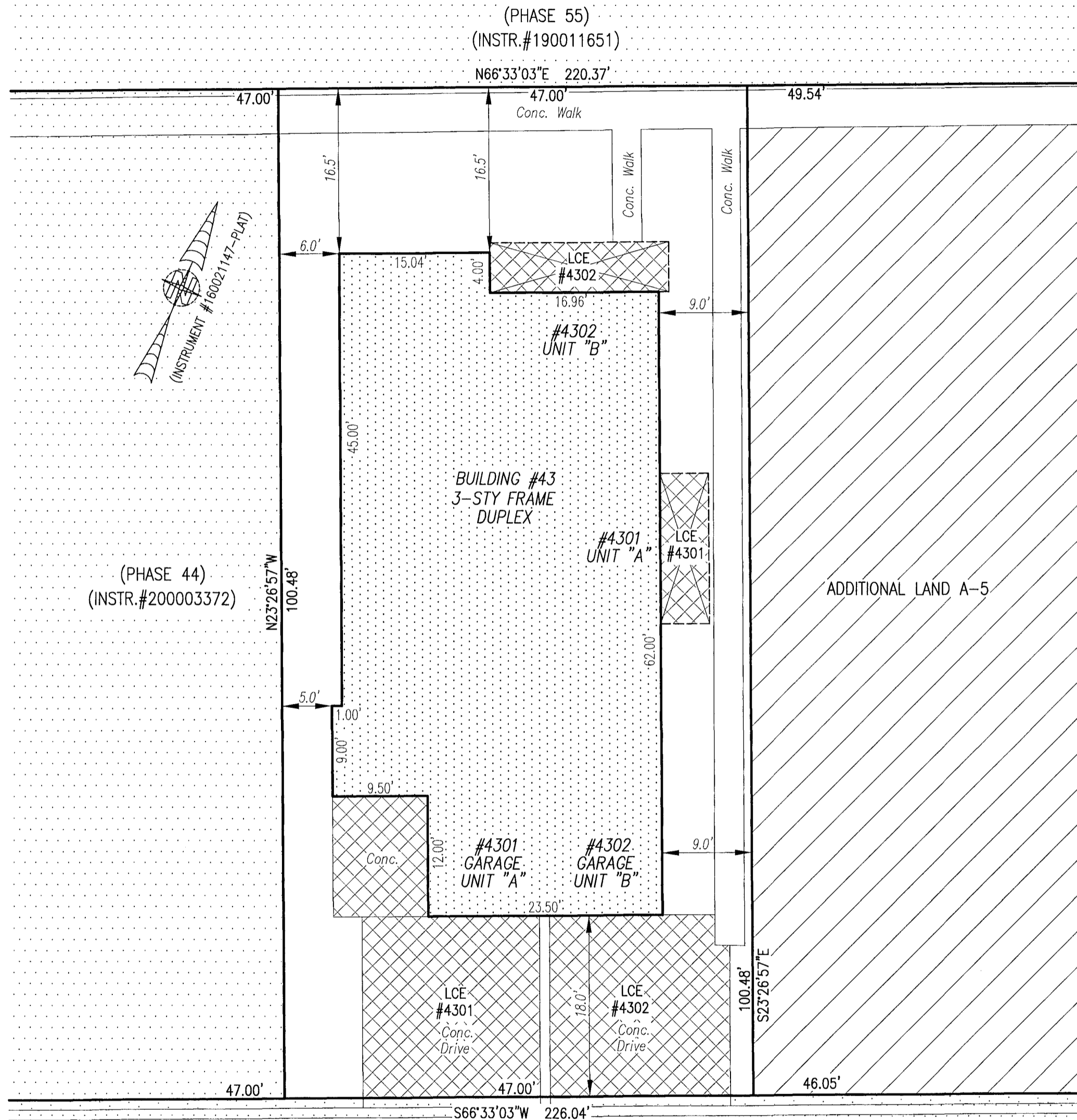


20003789

I HEREBY CERTIFY THAT THIS PLAT IS ACCURATE AND THAT IT COMPLIES WITH THE PROVISIONS OF THE CODE OF VIRGINIA OF 1950 AS AMENDED, § 55.1-1920A & B AND I FURTHER CERTIFY THAT ALL IMPROVEMENTS THEREOF DEPICTED HEREON, PURSUANT TO THE CODE OF VIRGINIA § 55.1-1920A, ARE SUBSTANTIALLY COMPLETE.



- INDICATES PREVIOUSLY SUBMITTED LAND
- INDICATES BUILDING AREA (SEE PLANS FOR UNIT DIMENSIONS)
- INDICATES LIMITED COMMON ELEMENT (LCE) ASSIGNED TO A UNIT # UNIT ASSIGNED
- INDICATES COMMON ELEMENT (EXCLUDING AREAS OUTSIDE SUBMITTED LAND)
- INDICATES ADDITIONAL LAND

(PHASE 44)
(INSTR.#200003372)

(PHASE 55)
(INSTR.#190011651)

5 Large/Small Plat(s) Recorded
herewith as # 200003789

City of Williamsburg & County of James City
Circuit Court: This PLAT was recorded on
Mar. 12, 2020
at 10:15 AM, PB PG
Document # 200003789
MONA A. FOLEY, CLERK
Mon A. Foley, Clerk

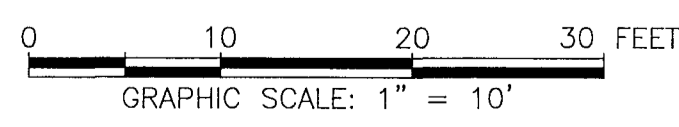
THIS SHEET: BUILDING DETAIL

PHASE 43
CONDOMINIUM PLAT AND PLAN
OF
THE PROMENADE
AT
JOHN TYLER
A CONDOMINIUM
JAMES CITY COUNTY, VIRGINIA

Jo# 160921
Hayden Frye and Associates, Inc.
Land Surveyors
333 KELLAM ROAD, SUITE 200
VIRGINIA BEACH, VA, 23462
PH: (757) 491-7228 FX: (757) 491-7229

DATE: MARCH 2, 2020
SCALE: 1"=10'
SHEET 3 OF 5 THIS PHASE

BALLATA (PRIVATE) ROAD
(FORMERLY ALLEY D)
(PHASE 1 INSTR.#170011679)
(PREVIOUSLY SUBMITTED LAND)



JCC Subdivision Agent
Approval Not Required *ELW*