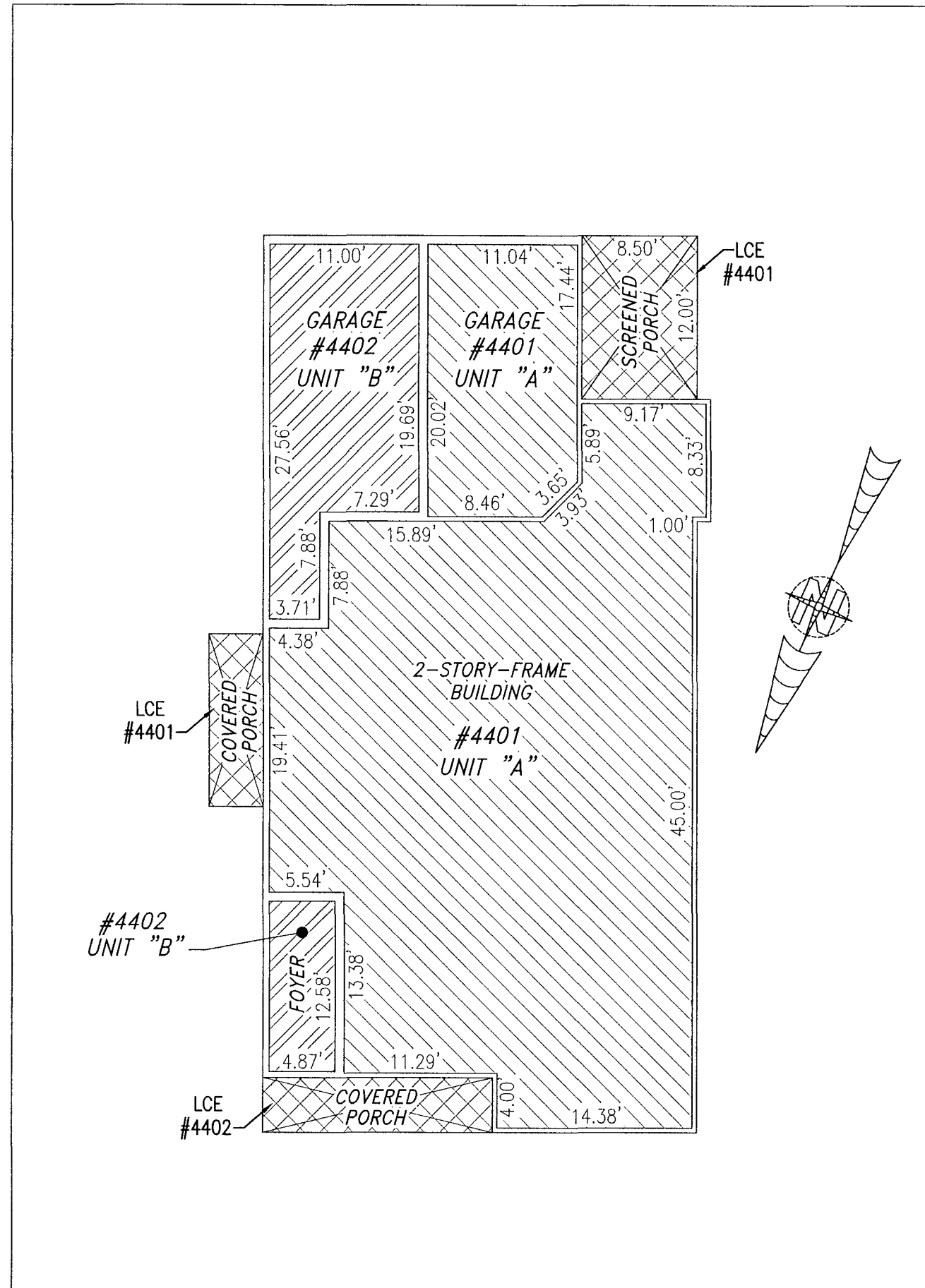
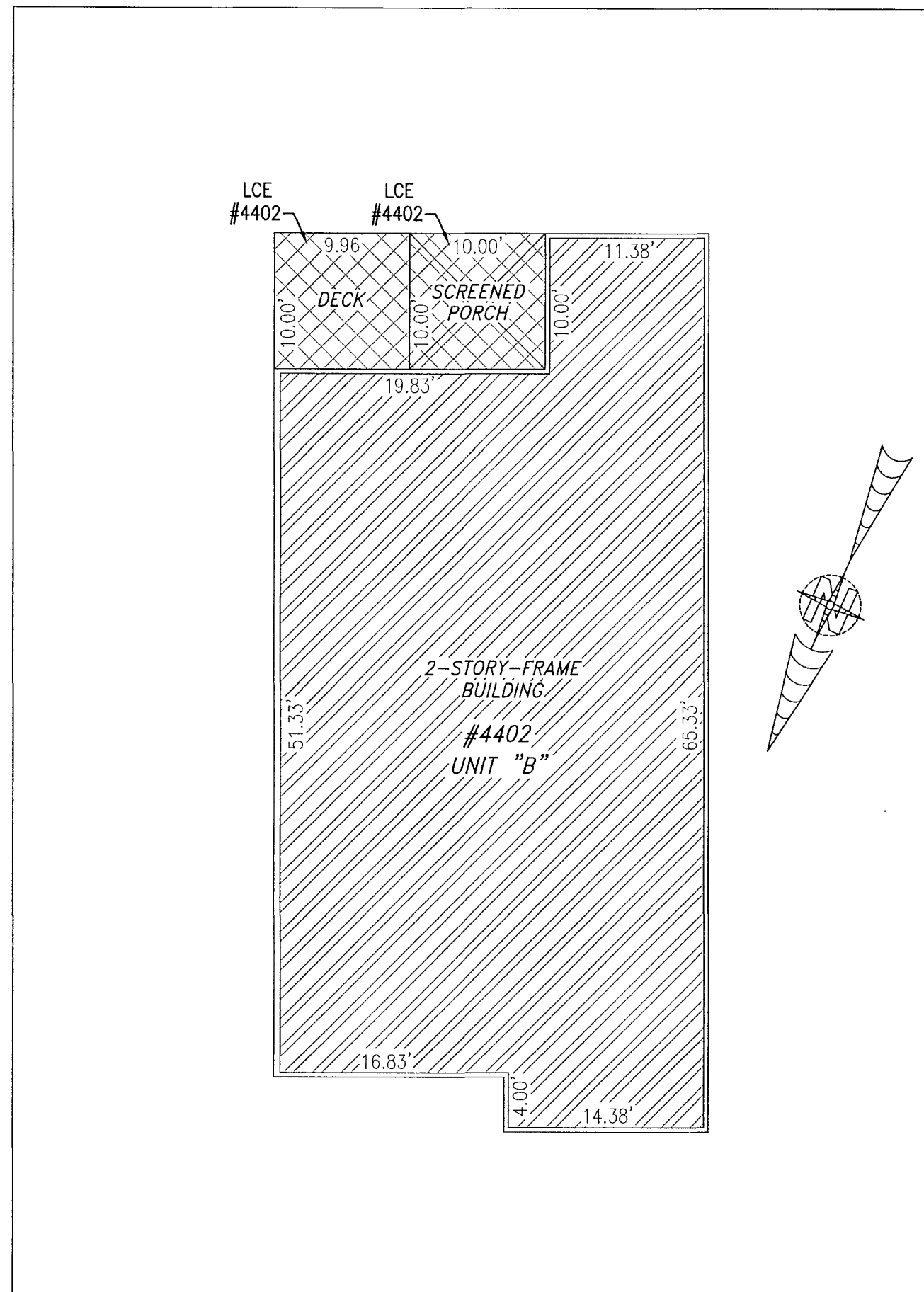


200003372

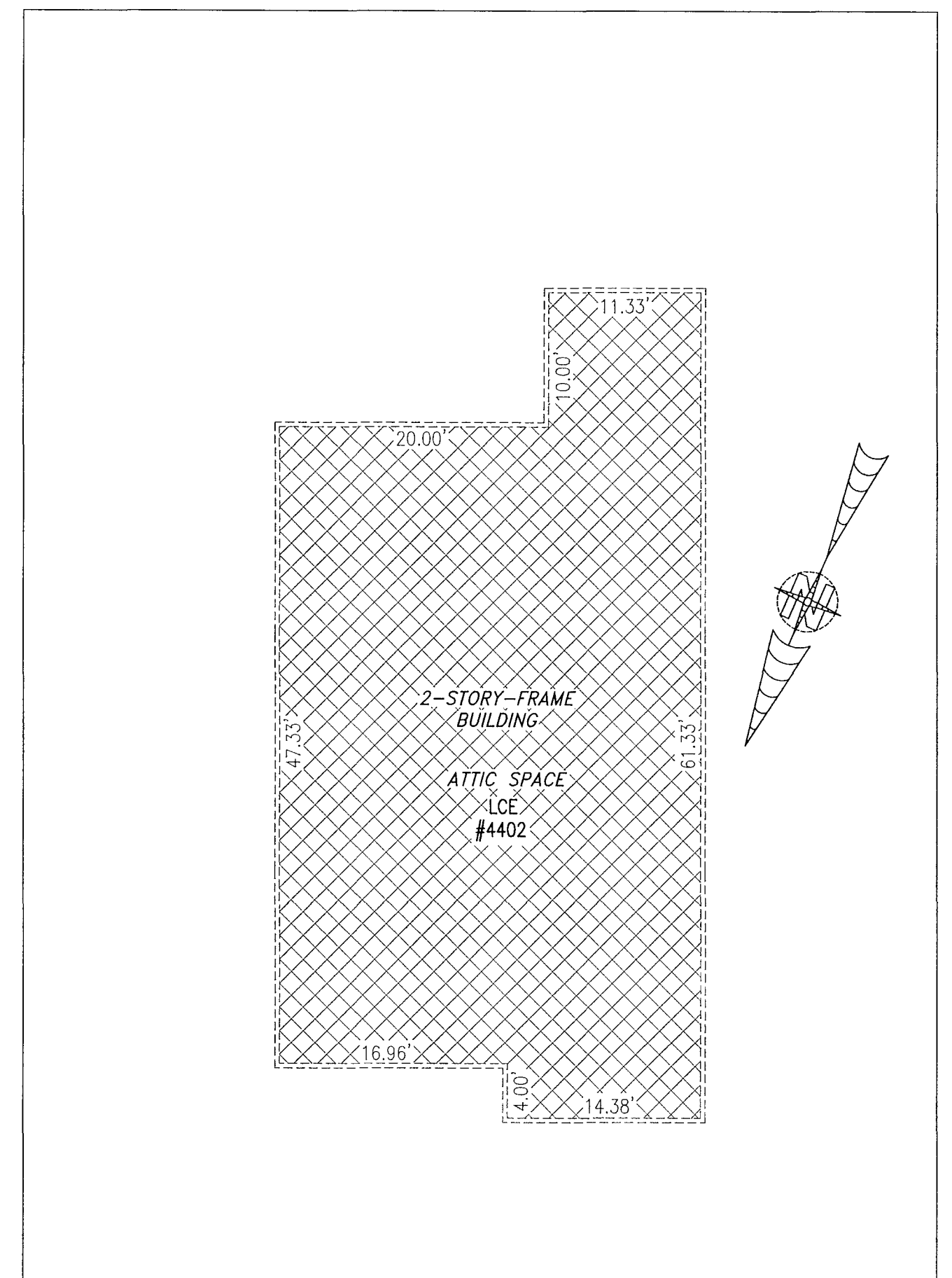
BUILDING 44 (DUPLEX)



FIRST FLOOR



SECOND FLOOR



THIRD FLOOR

I HEREBY CERTIFY THAT THIS PLAT IS ACCURATE AND THAT IT COMPLIES WITH THE PROVISIONS OF THE CODE OF VIRGINIA OF 1950 AS AMENDED, § 55.1-1920A & B AND I FURTHER CERTIFY THAT ALL IMPROVEMENTS THEREOF DEPICTED HEREON, PURSUANT TO THE CODE OF VIRGINIA § 55.1-1920B, ARE SUBSTANTIALLY COMPLETE.

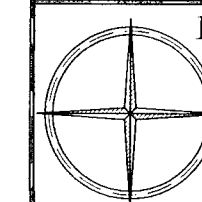
UNIT ID	UNIT DESCRIPTION	UNIT ADDRESS
A	-INDICATES AREA OF UNIT 4401	#4401 BALLATA ROAD
B	-INDICATES AREA OF UNIT 4402	#4402 BALLATA ROAD
	-INDICATES COMMON ELEMENT	
	-INDICATES LIMITED COMMON ELEMENT	



THIS SHEET: FLOOR PLANS

PHASE 44
 CONDOMINIUM PLAT AND PLAN
 OF
THE PROMENADE
 AT
JOHN TYLER
 A CONDOMINIUM
 JAMES CITY COUNTY, VIRGINIA

Jo# 160921



Hayden Frye and Associates, Inc.
 Land Surveyors

333 KELLAM ROAD, SUITE 200
 VIRGINIA BEACH, VA., 23462
 PH: (757) 491-7228 FX: (757) 491-7229

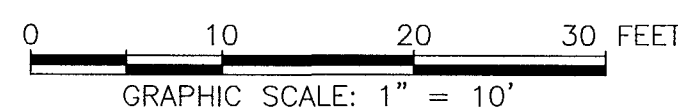
DATE: FEBRUARY 19, 2020

SCALE: 1"=10'

SHEET 5 OF 5 THIS PHASE

5 Large/Small Plat(s) Recorded
 herewith as # 200003372

City of Williamsburg & County of James City
 Circuit Court: This PLAT was recorded on
 Mar 4, 2020
 at 1:41 AM/PM PB PG
 Document # 200003372
 MONA A. FOLEY, CLERK
 Mona A. Foley, Clerk



JCC Subdivision Agent EGO
 Approval Not Required