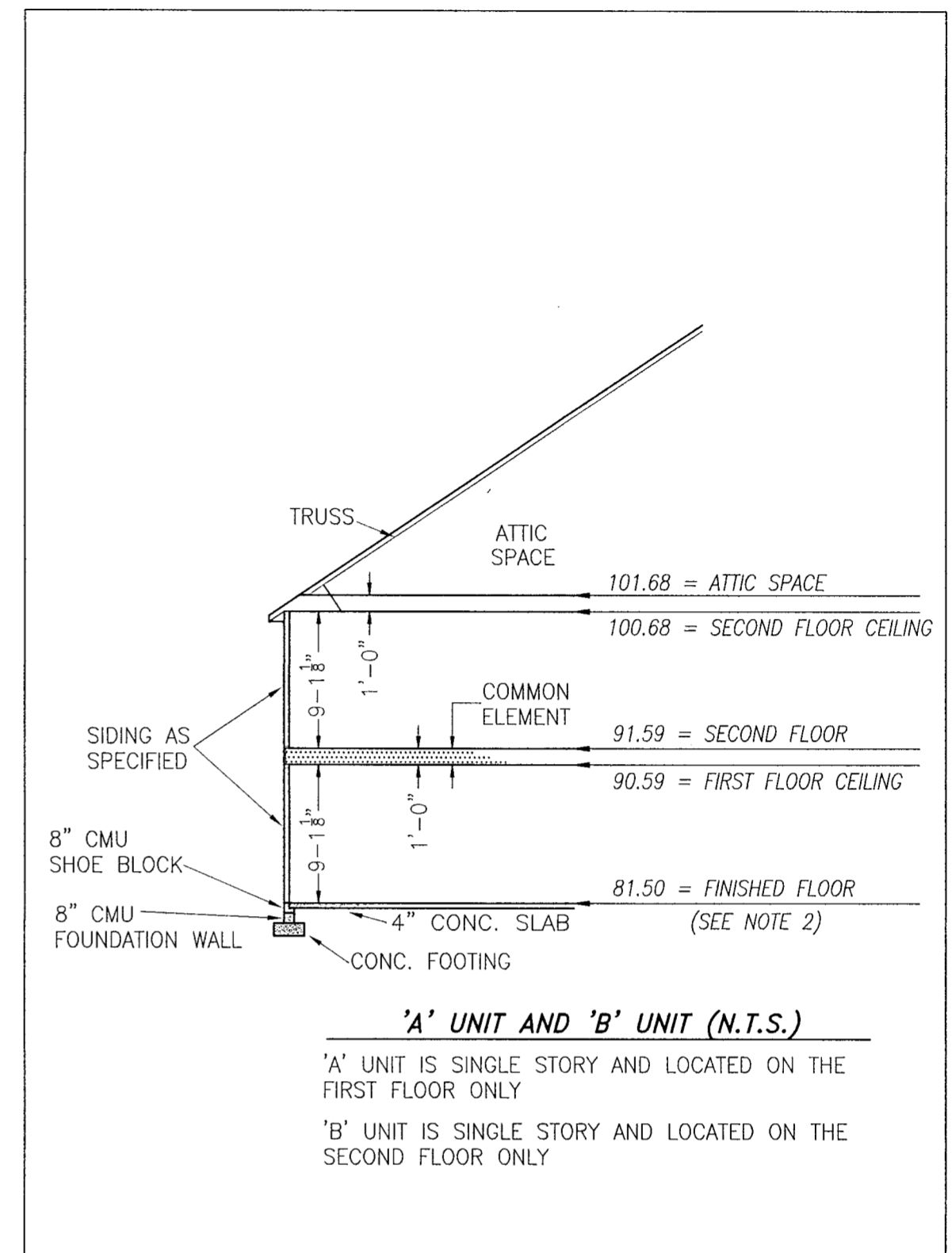
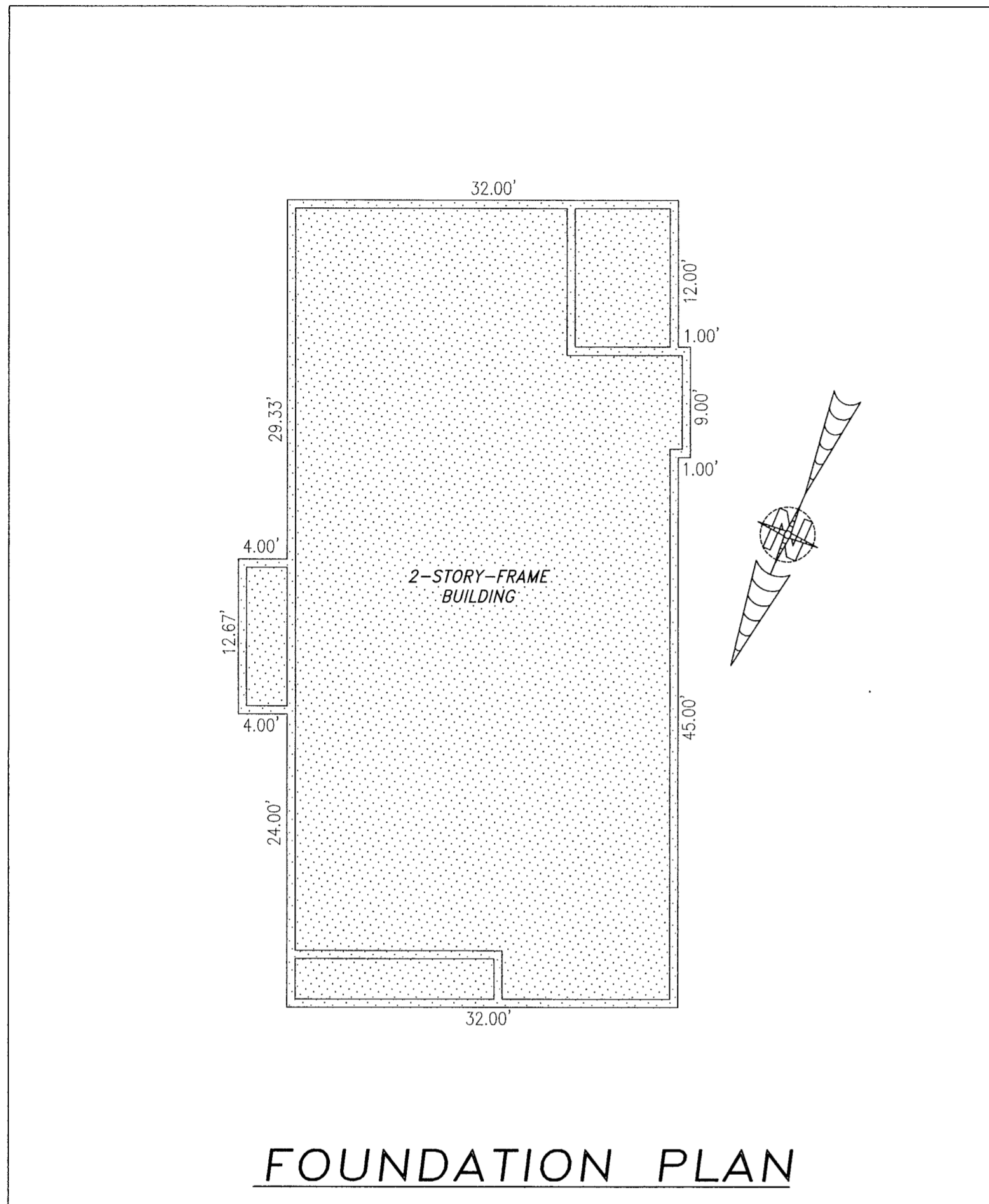


200003372

BUILDING 44 (DUPLEX)



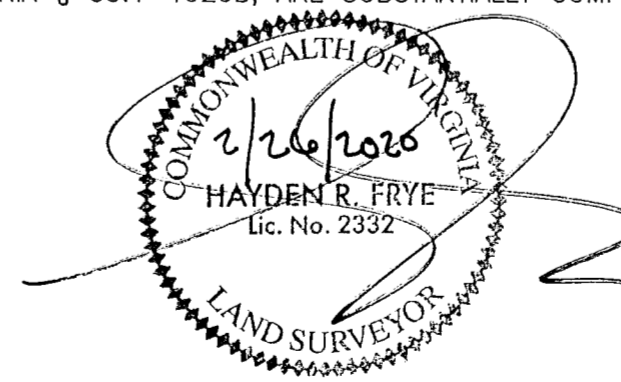
TYPICAL BUILDING SECTION

NOT TO SCALE (N.T.S.)

NOTES:

1. VERTICAL DATUM REFERENCE: NATIONAL GEODETIC VERTICAL DATUM OF 1929 (NGVD29).
2. FINISHED FLOOR ELEVATION SHOWN WAS TAKEN FROM AS-BUILT SURVEY OF BUILDING #44 (DUPLEX) THE PROMENADE AT JOHN TYLER BY HAYDEN FRYE AND ASSOCIATES. FIELD WORK WAS PERFORMED ON 01-07-20.

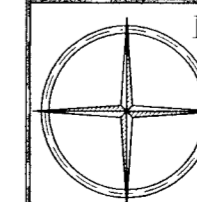
I HEREBY CERTIFY THAT THIS PLAT IS ACCURATE AND THAT IT COMPLIES WITH THE PROVISIONS OF THE CODE OF VIRGINIA OF 1950 AS AMENDED, § 55.1-1920A & B AND I FURTHER CERTIFY THAT ALL IMPROVEMENTS THEREOF DEPICTED HEREON, PURSUANT TO THE CODE OF VIRGINIA § 55.1-1920B, ARE SUBSTANTIALLY COMPLETE.



THIS SHEET: FOUNDATION PLAN AND SECTION

PHASE 44
 CONDOMINIUM PLAT AND PLAN
 OF
 THE PROMENADE
 AT
 JOHN TYLER
 A CONDOMINIUM
 JAMES CITY COUNTY, VIRGINIA

Jo# 160921



Hayden Frye and Associates, Inc.

Land Surveyors

333 KELLAM ROAD, SUITE 200
 VIRGINIA BEACH, VA., 23462
 PH: (757) 491-7228 FX: (757) 491-7229

DATE: FEBRUARY 19, 2020

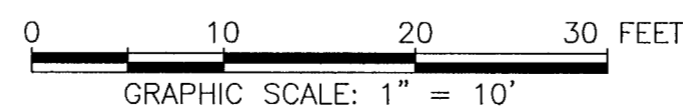
SCALE: 1"=10'

SHEET 4 OF 5 THIS PHASE

-INDICATES COMMON ELEMENT

City of Williamsburg & County of James City
 Circuit Court: This PLAT was recorded on
 Mar 4, 2020
 at 1:41 AM/PM PB PG
 Document # 200003372
 MONA A. FOLEY, CLERK
 Clerk

5 Large/Small Plat(s) Recorded
 herewith as # 200003372



JCC Subdivision Agent ELL
 Approval Not Required