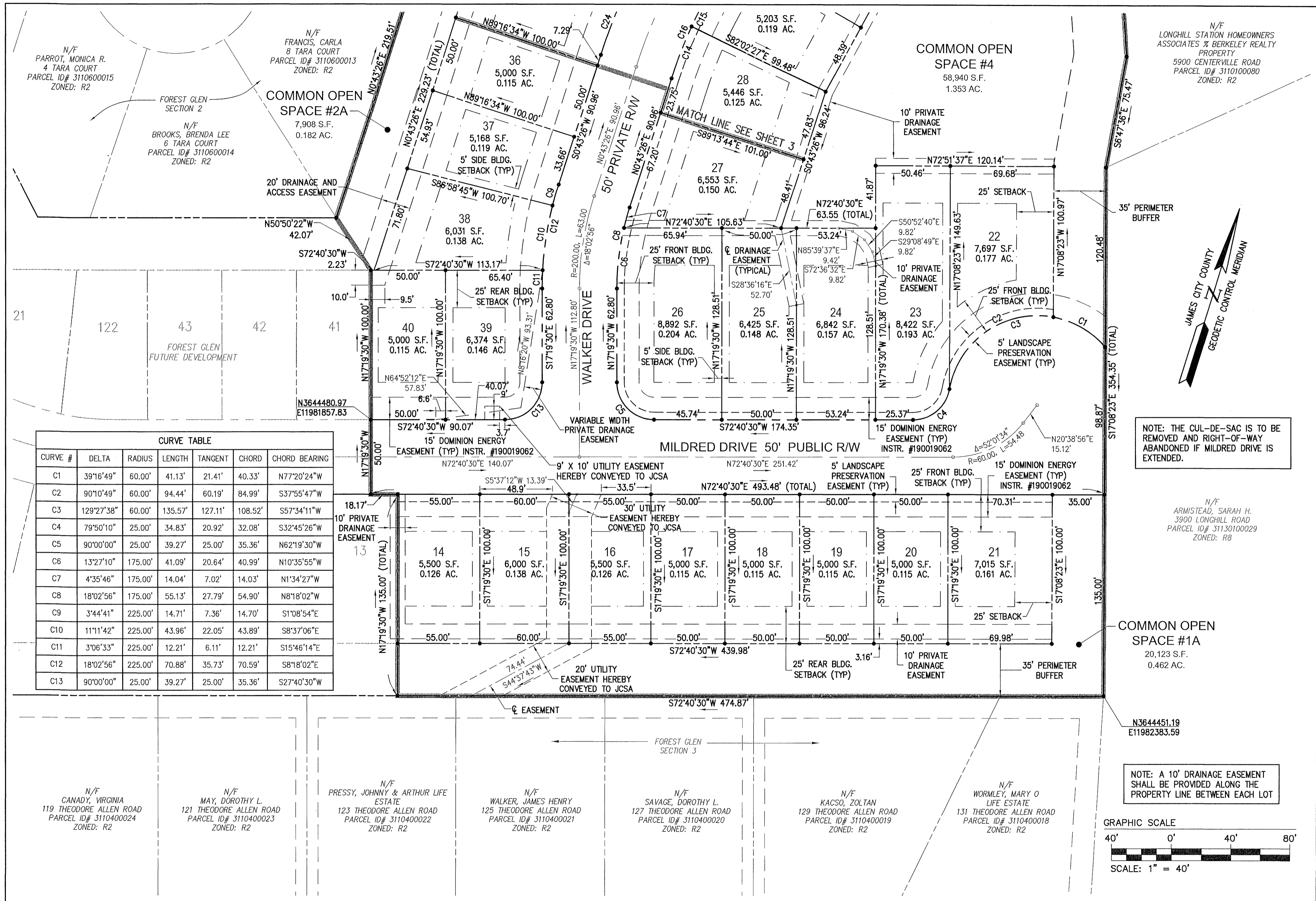


200002767

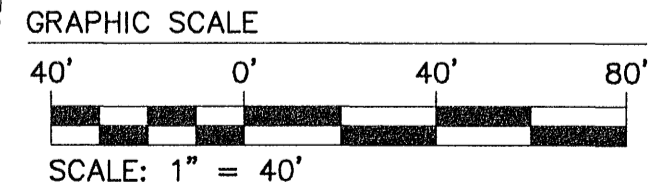


CURVE TABLE						
CURVE #	DELTA	RADIUS	LENGTH	TANGENT	CHORD	CHORD BEARING
C1	39°16'49"	60.00'	41.13'	21.41'	40.33'	N77°20'24"W
C2	90°10'49"	60.00'	94.44'	60.19'	84.99'	S37°55'47"W
C3	129°27'38"	60.00'	135.57'	127.11'	108.52'	S57°34'11"W
C4	79°50'10"	25.00'	34.83'	20.92'	32.08'	S32°45'26"W
C5	90°00'00"	25.00'	39.27'	25.00'	35.36'	N62°19'30"W
C6	13°27'10"	175.00'	41.09'	20.64'	40.99'	N10°35'55"W
C7	4°35'46"	175.00'	14.04'	7.02'	14.03'	N1°34'27"W
C8	18°02'56"	175.00'	55.13'	27.79'	54.90'	N8°18'02"W
C9	3°44'41"	225.00'	14.71'	7.36'	14.70'	S1°08'54"E
C10	11°11'42"	225.00'	43.96'	22.05'	43.89'	S8°37'06"E
C11	3°06'33"	225.00'	12.21'	6.11'	12.21'	S15°46'14"E
C12	18°02'56"	225.00'	70.88'	35.73'	70.59'	S8°18'02"E
C13	90°00'00"	25.00'	39.27'	25.00'	35.36'	S27°40'30"W

NOTE: THE CUL-DE-SAC IS TO BE REMOVED AND RIGHT-OF-WAY ABANDONED IF MILDRED DRIVE IS EXTENDED.

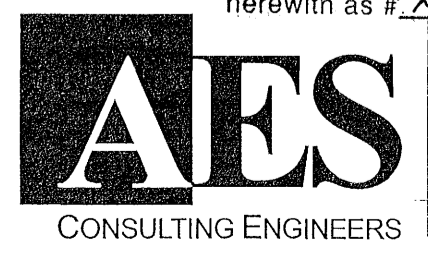
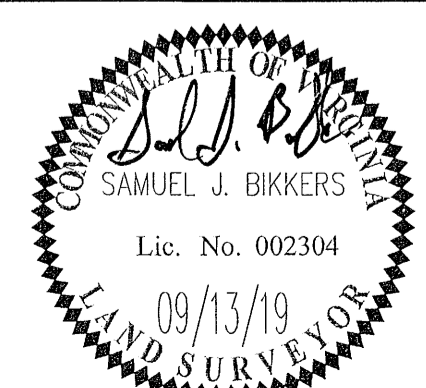
N/F ARMISTEAD, SARAH H. 3900 LONGHILL ROAD PARCEL ID# 31130100029 ZONED: R8

NOTE: A 10' DRAINAGE EASEMENT SHALL BE PROVIDED ALONG THE PROPERTY LINE BETWEEN EACH LOT



2	09/13/19	REVISED P
1	07/24/19	REVISED P
Rev.	Date	

City of Williamsburg & County of James City
Circuit Court: This PLAT was recorded on:
Feb. 20, 2020
at 11:13 AM/PM, PG —
Document # 200002767
MONA A. FOLEY, CLERK
Mona A. Foley, Clerk



3 Large/Small Plat(s) Recorded herewith as # 200002767
5248 Olde Towne Road, Suite 1
Williamsburg, Virginia 23188
Phone: (757) 253-0040
Fax: (757) 220-8994
www.aesva.com

REF: JCC S-0036-2017
PLAT OF SUBDIVISION
LOTS 14 THRU 40 AND
COMMON OPEN SPACES #1A, #2A, #3 AND #4
FOREST GLEN
SECTION 5 - PHASE 1
OWNER / DEVELOPER: FOREST GLEN ASSOCIATES, LLC
POWhatan District JAMES CITY COUNTY VIRGINIA

Project Contacts:	SJB/TRS
Project Number:	6195-02
Scale:	1"=40'
Date:	01/24/19
Sheet Number	2 of 3