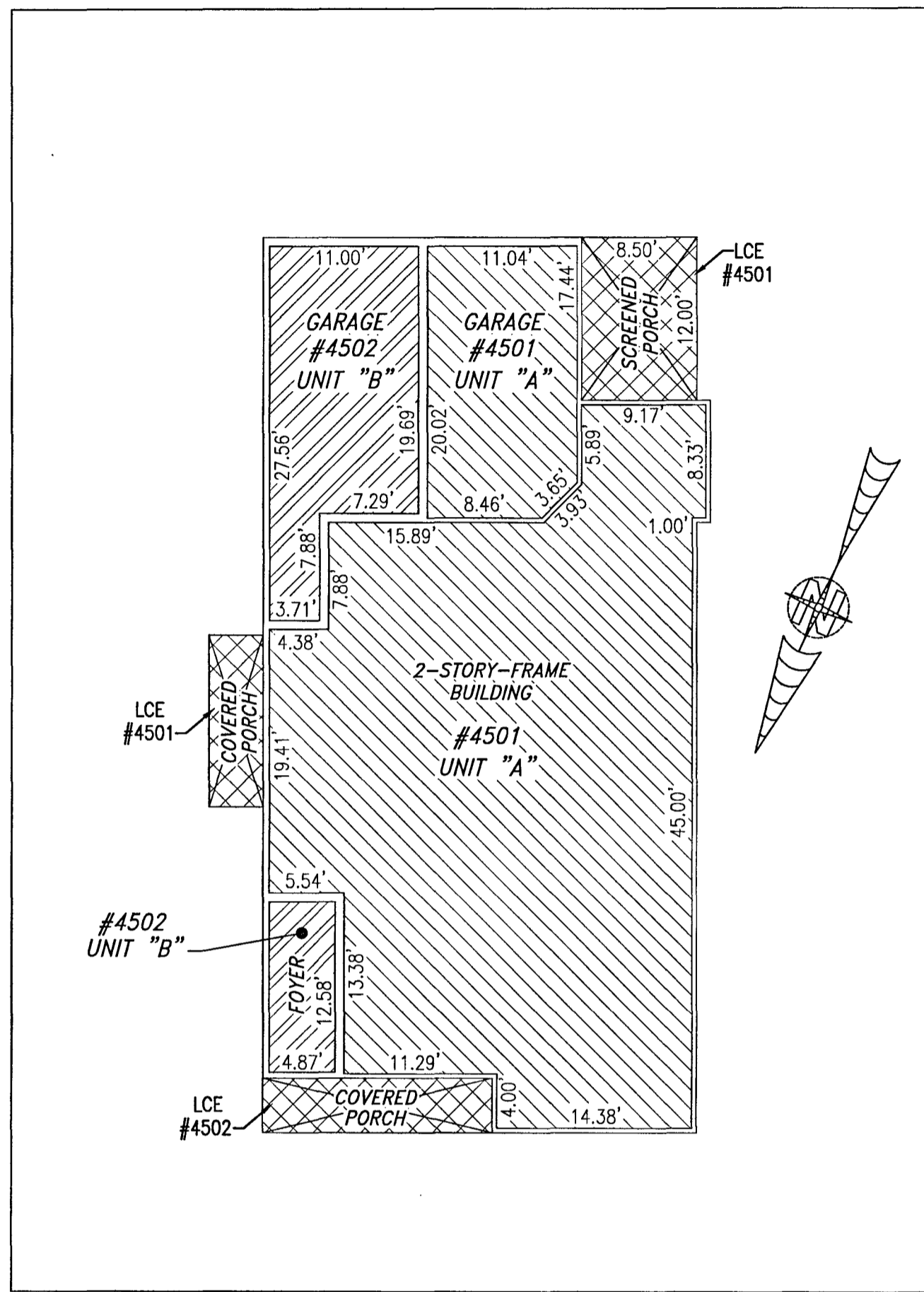
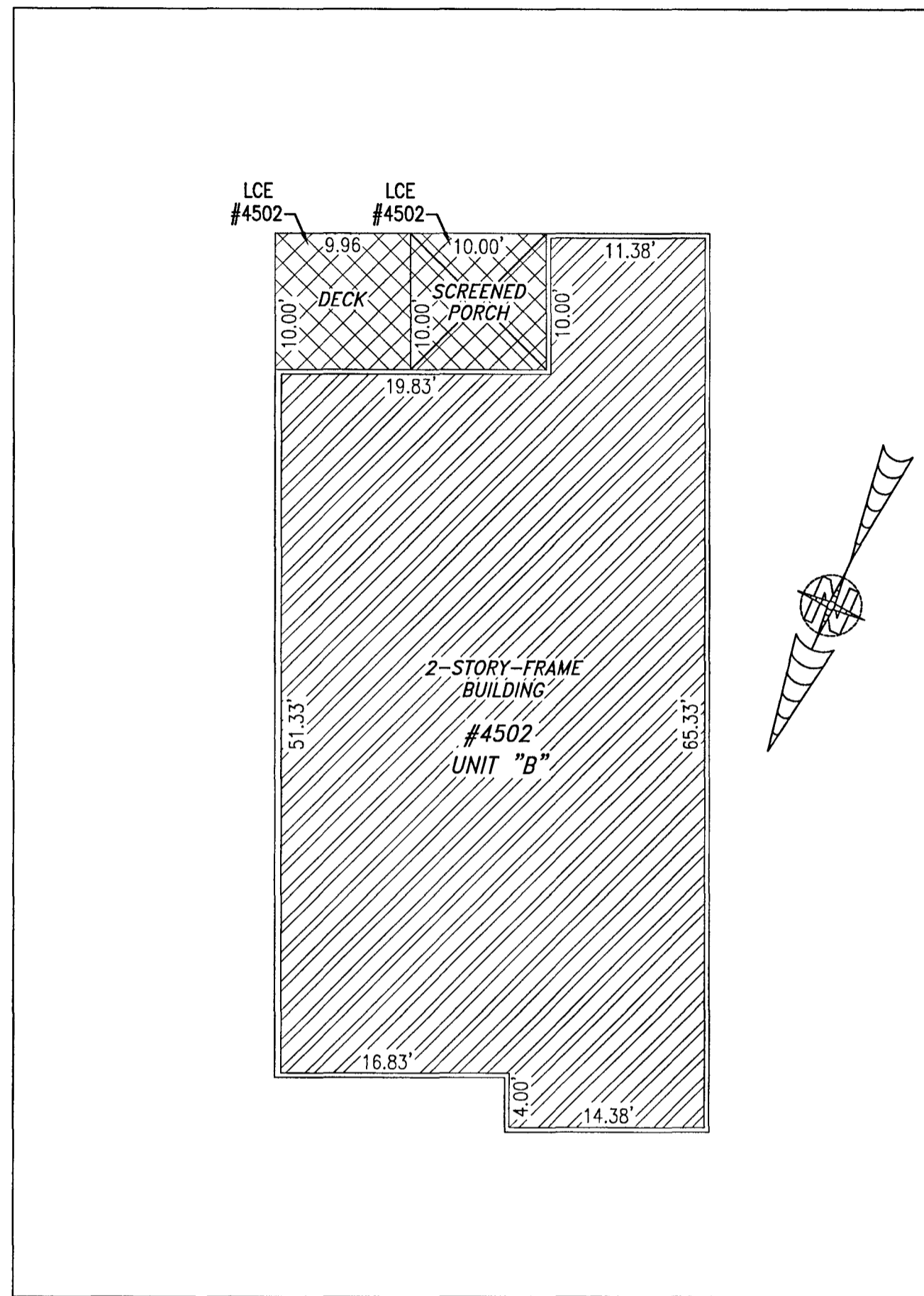


200002243

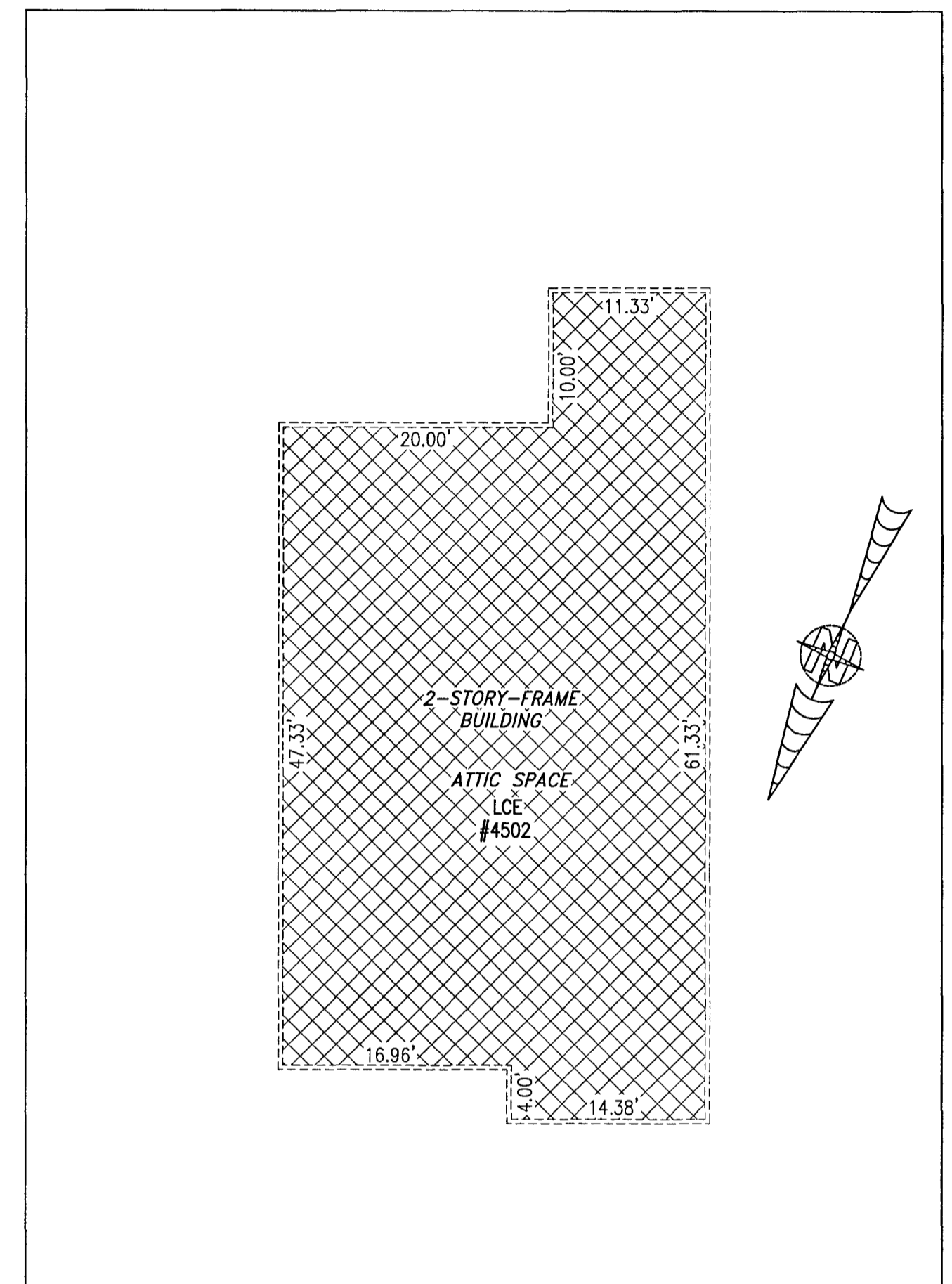
BUILDING 45 (DUPLEX)



FIRST FLOOR



SECOND FLOOR



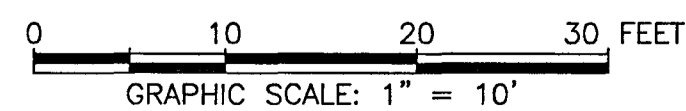
THIRD FLOOR

I HEREBY CERTIFY THAT THIS PLAT IS ACCURATE AND THAT IT COMPLIES WITH THE PROVISIONS OF THE CODE OF VIRGINIA OF 1950 AS AMENDED, § 55.1-1920A & B AND I FURTHER CERTIFY THAT ALL IMPROVEMENTS THEREOF DEPICTED HEREON, PURSUANT TO THE CODE OF VIRGINIA § 55.1-1920B, ARE SUBSTANTIALLY COMPLETE.

UNIT ID	UNIT DESCRIPTION	UNIT ADDRESS
A	-INDICATES AREA OF UNIT 4501	#4501 BALLATA ROAD
B	-INDICATES AREA OF UNIT 4502	#4502 BALLATA ROAD
	-INDICATES COMMON ELEMENT	
	-INDICATES LIMITED COMMON ELEMENT	

5 Large/Small Plat(s) Recorded herewith as # 200002243

City of Williamsburg & County of James City Circuit Court: This PLAT was recorded on Feb. 12, 2020 at 9:39 AM/PM, PB PG Document # 200002243 MONA A. FOLEY, CLERK

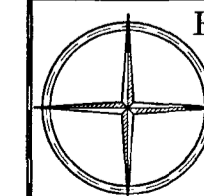


JCC Subdivision Agent Approval Not Required E66

THIS SHEET: FLOOR PLANS

PHASE 45
 CONDOMINIUM PLAT AND PLAN
 OF
THE PROMENADE
 AT
JOHN TYLER
 A CONDOMINIUM
 JAMES CITY COUNTY, VIRGINIA

Jo# 160921



Hayden Frye and Associates, Inc.
Land Surveyors

333 KELLAM ROAD, SUITE 200
 VIRGINIA BEACH, VA, 23462
 PH: (757) 491-7228 FX: (757) 491-7229

DATE: JANUARY 31, 2020
 SCALE: 1"=10'
 SHEET 5 OF 5 THIS PHASE