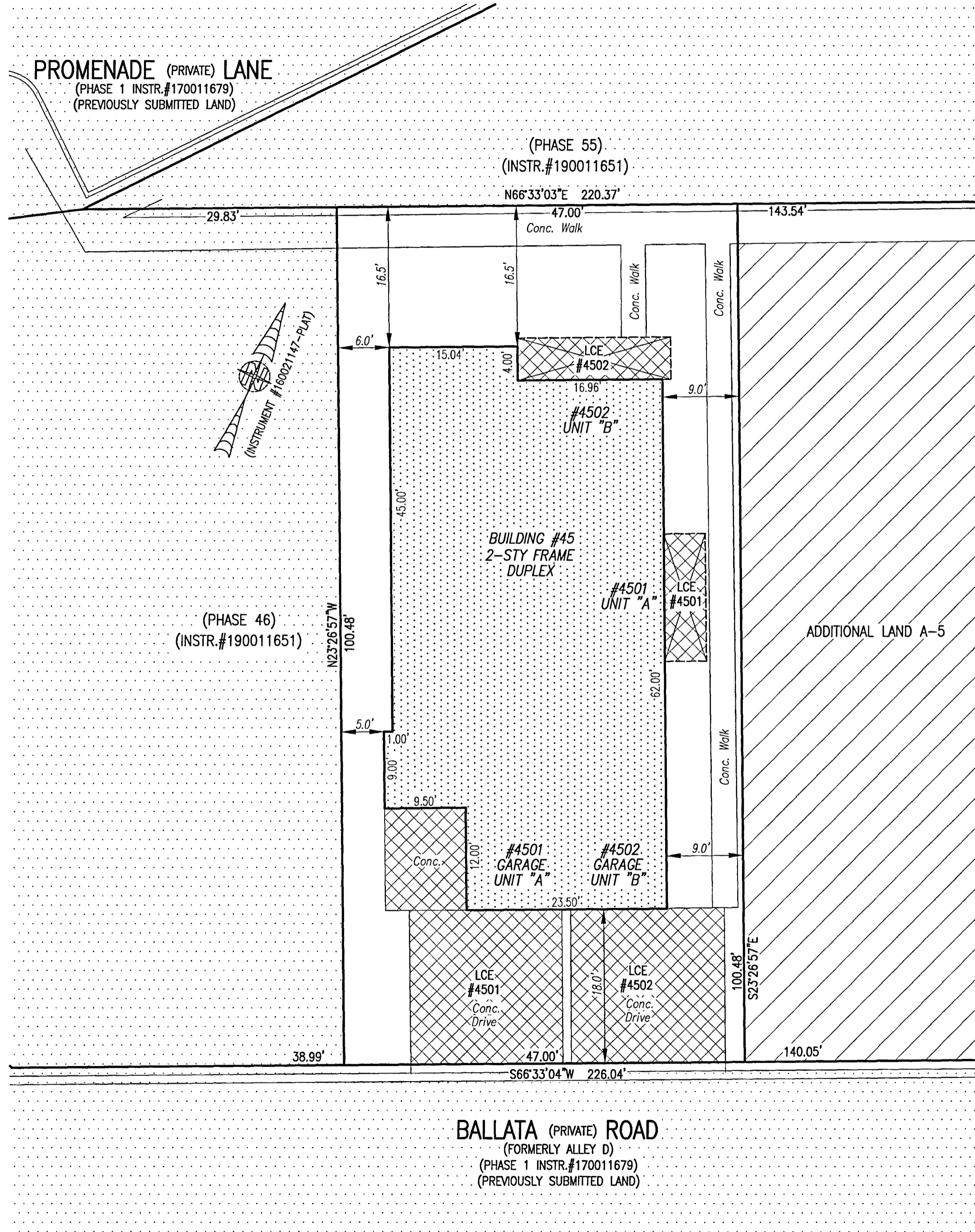
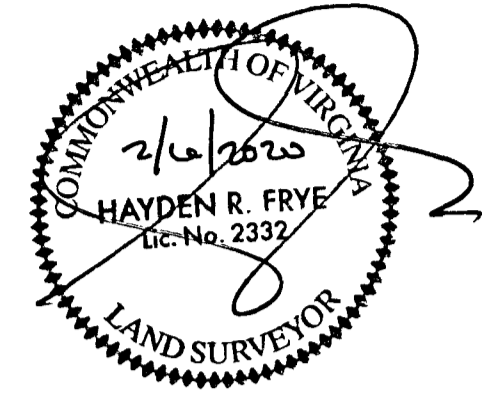


20002243

I HEREBY CERTIFY THAT THIS PLAT IS ACCURATE AND THAT IT COMPLIES WITH THE PROVISIONS OF THE CODE OF VIRGINIA OF 1950 AS AMENDED, § 55.1-1920A & B AND I FURTHER CERTIFY THAT ALL IMPROVEMENTS THEREOF DEPICTED HEREON, PURSUANT TO THE CODE OF VIRGINIA § 55.1-1920A, ARE SUBSTANTIALLY COMPLETE.



- INDICATES PREVIOUSLY SUBMITTED LAND
- INDICATES BUILDING AREA (SEE PLANS FOR UNIT DIMENSIONS)
- INDICATES LIMITED COMMON ELEMENT (LCE) ASSIGNED TO A UNIT # UNIT ASSIGNED
- INDICATES COMMON ELEMENT (EXCLUDING AREAS OUTSIDE SUBMITTED LAND)
- INDICATES ADDITIONAL LAND

LCE #1000  
(EXAMPLE UNIT #)

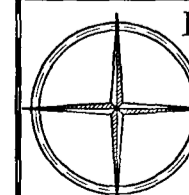
5 Large/Small Plat(s) Recorded  
herewith as # 20002243

City of Williamsburg & County of James City  
Circuit Court: This PLAT was recorded on  
Feb 12, 2020  
at 9:39 AM/PM, PB PG  
Document # 20002243  
MONA A. FOLEY, CLERK  
Mona A. Foley, Clerk

THIS SHEET: BUILDING DETAIL

**PHASE 45**  
**CONDOMINIUM PLAT AND PLAN**  
OF  
**THE PROMENADE**  
AT  
**JOHN TYLER**  
A CONDOMINIUM  
JAMES CITY COUNTY, VIRGINIA

Jo# 160921



Hayden Frye and Associates, Inc.  
**Land Surveyors**

333 KELLAM ROAD, SUITE 200  
VIRGINIA BEACH, VA., 23462  
PH: (757) 491-7228 FX: (757) 491-7229

DATE: JANUARY 31, 2020

SCALE: 1"=10'

SHEET 3 OF 5 THIS PHASE

JCC Subdivision Agent *EB*  
Approval Not Required

