

200001607

SUBDIVISION OF  
**STONEHOUSE TRACT 3**  
**PARCEL "A", SECTION 2**  
 LOTS 1 THROUGH 21  
 LOTS 42 THROUGH 77  
 & LOTS 87 THROUGH 97

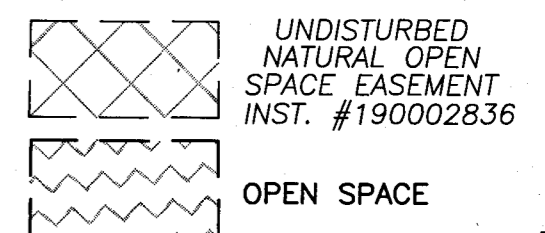
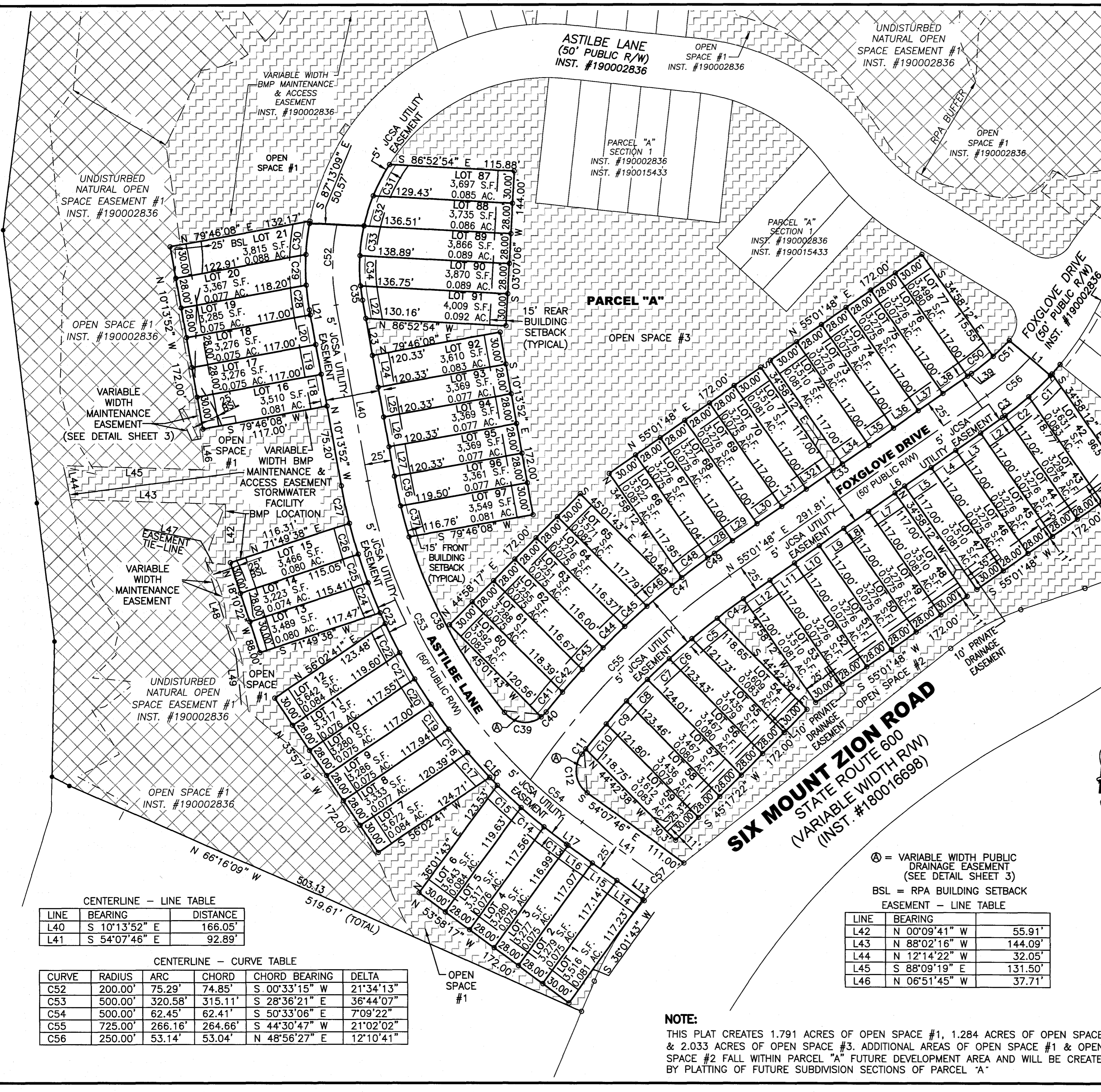
STONEHOUSE DISTRICT JAMES CITY COUNTY VIRGINIA  
 DATE: 12/16/2019 JOB # 17-378

**LandTech**  
**Resources, Inc.**

Engineering & Surveying Consultants  
 3925 Midlands Road, Williamsburg, Virginia 23188  
 Phone: (757) 565-1677 Fax: (757) 565-0782  
 web: landtechresources.com

SHEET 4 OF 4  
**JCC: S-19-0031**

City of Williamsburg & County of James City  
 Circuit Court. This Plat was recorded on  
 Feb 4 2020  
 at 3:44 PM, PG  
 Document # 200001607  
 MONA A. FOLEY, CLERK



SEE SHEET 2 FOR LOT LINE CURVE TABLES  
 SEE SHEET 1 FOR LOT LINE LINE TABLES

CENTERLINE - LINE TABLE

LINE	BEARING	DISTANCE
L40	S 10°13'52" E	166.05'
L41	S 54°07'46" E	92.89'

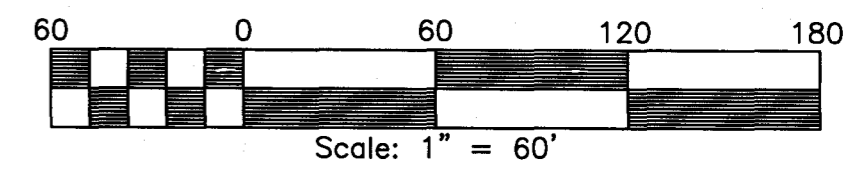
CENTERLINE - CURVE TABLE

CURVE	RADIUS	ARC	CHORD	CHORD BEARING	DELTA
C52	200.00'	75.29'	74.85'	S 00°33'15" W	21°34'13"
C53	500.00'	320.58'	315.11'	S 28°36'21" E	36°44'07"
C54	500.00'	62.45'	62.41'	S 50°33'06" E	7°09'22"
C55	725.00'	266.16'	264.66'	S 44°30'47" W	21°02'02"
C56	250.00'	53.14'	53.04'	N 48°56'27" E	12°10'41"

⊕ = VARIABLE WIDTH PUBLIC DRAINAGE EASEMENT (SEE DETAIL SHEET 3)  
 BSL = RPA BUILDING SETBACK EASEMENT - LINE TABLE

LINE	BEARING	DISTANCE
L42	N 00°09'41" W	55.91'
L43	N 88°02'16" W	144.09'
L44	N 12°14'22" W	32.05'
L45	S 88°09'19" E	131.50'
L46	N 06°51'45" W	37.71'

**NOTE:**  
 THIS PLAT CREATES 1.791 ACRES OF OPEN SPACE #1, 1.284 ACRES OF OPEN SPACE #2, & 2.033 ACRES OF OPEN SPACE #3. ADDITIONAL AREAS OF OPEN SPACE #1 & OPEN SPACE #2 FALL WITHIN PARCEL "A" FUTURE DEVELOPMENT AREA AND WILL BE CREATED BY PLATTING OF FUTURE SUBDIVISION SECTIONS OF PARCEL "A"



PARCEL "A" SECTION 2 LOT & R/W DETAIL