

20001607

**NOTE:**  
THIS PLAT CREATES 1.791 ACRES OF OPEN SPACE #1, 1.284 ACRES OF OPEN SPACE #2, & 2.033 ACRES OF OPEN SPACE #3. ADDITIONAL AREAS OF OPEN SPACE #1 & OPEN SPACE #2 FALL WITHIN PARCEL "A" FUTURE DEVELOPMENT AREA AND WILL BE CREATED BY PLATTING OF FUTURE SUBDIVISION SECTIONS OF PARCEL "A"

SIX MOUNT ZION ROAD  
R/W LINE TABLE

LINE	BEARING	DISTANCE
L192	S 23°14'41" W	30.33'
L193	S 71°17'41" W	62.90'
L194	S 07°23'55" W	94.18'
L195	S 07°23'55" W	2.79'
L196	S 02°48'41" W	54.92'
L197	S 02°48'41" W	178.96'

SIX MOUNT ZION ROAD R/W CURVE TABLE

CURVE	RADIUS	ARC	CHORD	CHORD BEARING	DELTA
C57	280.44'	50.92'	50.85'	S 46°21'46" W	10°24'11"
C102	280.44'	138.61'	137.21'	S 37°24'17" W	28°19'11"
C103	214.22'	74.78'	74.40'	S 61°17'43" W	20°00'05"
C104	338.10'	57.34'	57.27'	S 66°26'10" W	9°43'02"
C105	727.00'	221.46'	220.61'	S 41°03'46" W	17°27'13"
C106	412.42'	75.49'	75.39'	S 16°58'34" W	10°29'16"

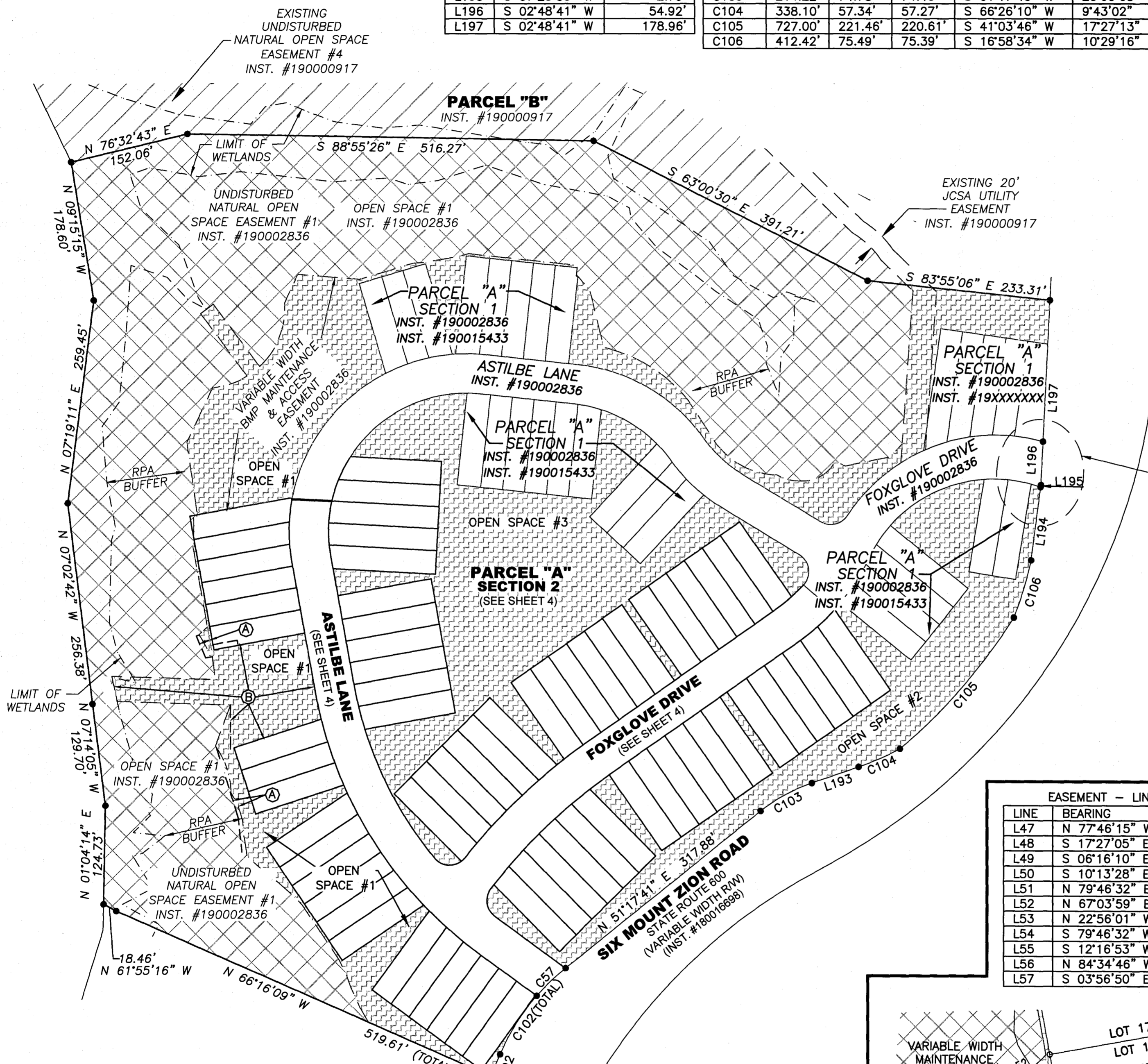
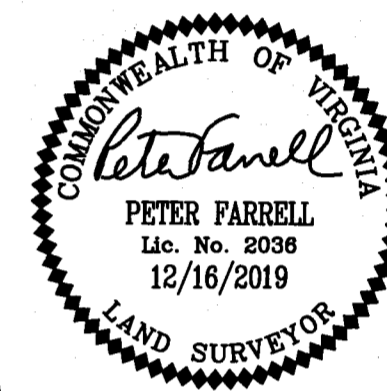
SUBDIVISION OF  
**STONEHOUSE TRACT 3**  
**PARCEL "A", SECTION 2**  
LOTS 1 THROUGH 21  
LOTS 42 THROUGH 77  
& LOTS 87 THROUGH 97

STONEHOUSE DISTRICT JAMES CITY COUNTY VIRGINIA  
DATE: 12/16/2019 JOB # 17-378

**LandTech Resources, Inc.**  
Engineering & Surveying Consultants  
3925 Midlands Road, Williamsburg, Virginia 23188  
Phone: (757) 565-1677 Fax: (757) 565-0782  
web: landtechresources.com

SHEET 3 OF 4

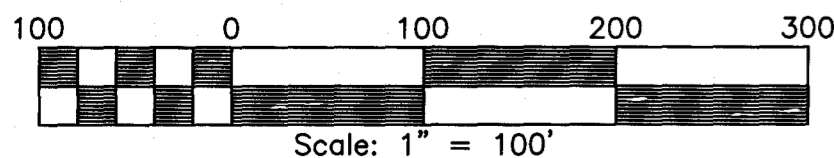
JCC: S-19-0031



N/F  
STONEHOUSE OWNERS  
FOUNDATION  
PIN: 054040001B  
INST. #150009055  
INST. #070021208 (PLAT)

**EASEMENT KEY**

- (A) VARIABLE WIDTH BMP MAINTENANCE & ACCESS EASEMENT
- (B) VARIABLE WIDTH MAINTENANCE EASEMENT STORMWATER FACILITY BMP LOCATION

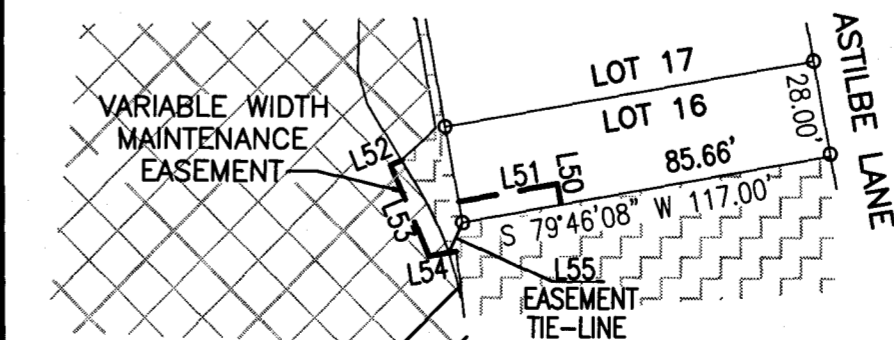


N/F  
STONEHOUSE OWNERS  
FOUNDATION  
PIN: 0540100017  
INST. #140015279  
INST. #090021691 (PLAT)

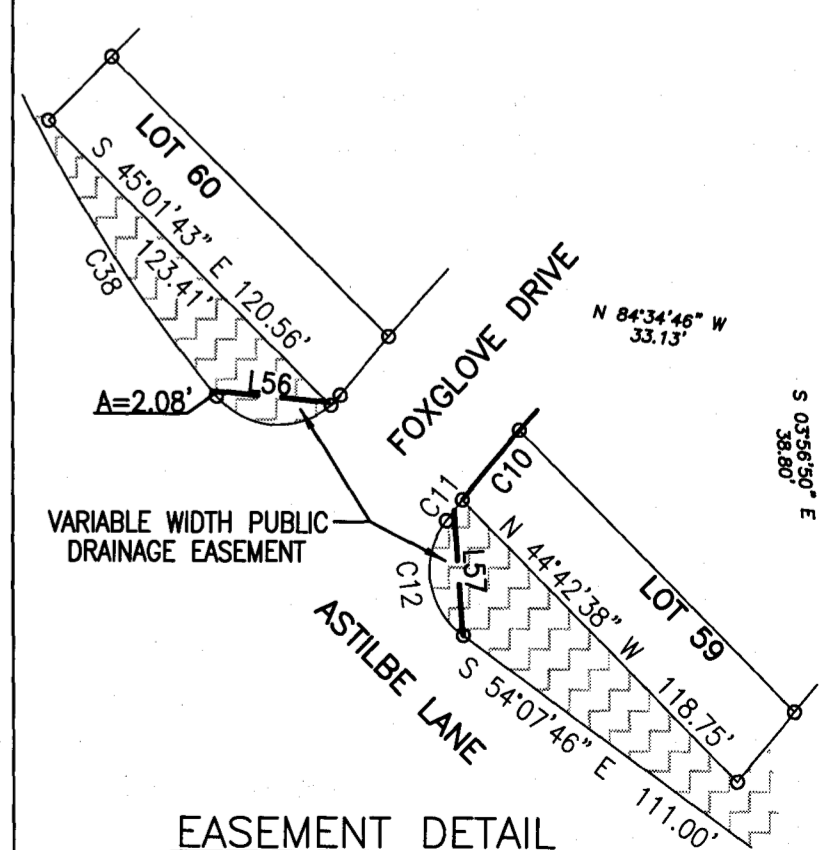
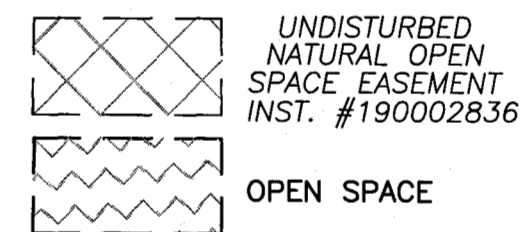
City of Williamsburg & County of James City  
Circuit Court: This PLAT was recorded on  
Feb 4 2020  
at 8:44 AM, PB — PG —  
Document # 20001607  
MONA A. FOLEY, CLERK  
Mona A. Foley, Clerk

EASEMENT - LINE TABLE

LINE	BEARING	DISTANCE
L47	N 77°46'15" W	18.77'
L48	S 17°27'05" E	92.51'
L49	S 06°16'10" E	44.27'
L50	S 10°13'28" E	6.56'
L51	N 79°46'32" E	31.34'
L52	N 67°03'59" E	3.72'
L53	N 22°56'01" W	30.42'
L54	S 79°46'32" W	8.63'
L55	S 12°16'53" W	9.13'
L56	N 84°34'46" W	33.13'
L57	S 03°56'50" E	38.80'



EASEMENT DETAIL  
NOT TO SCALE



EASEMENT DETAIL  
NOT TO SCALE

4 Large/Small Plat(s) Recorded  
herewith as # 20001607