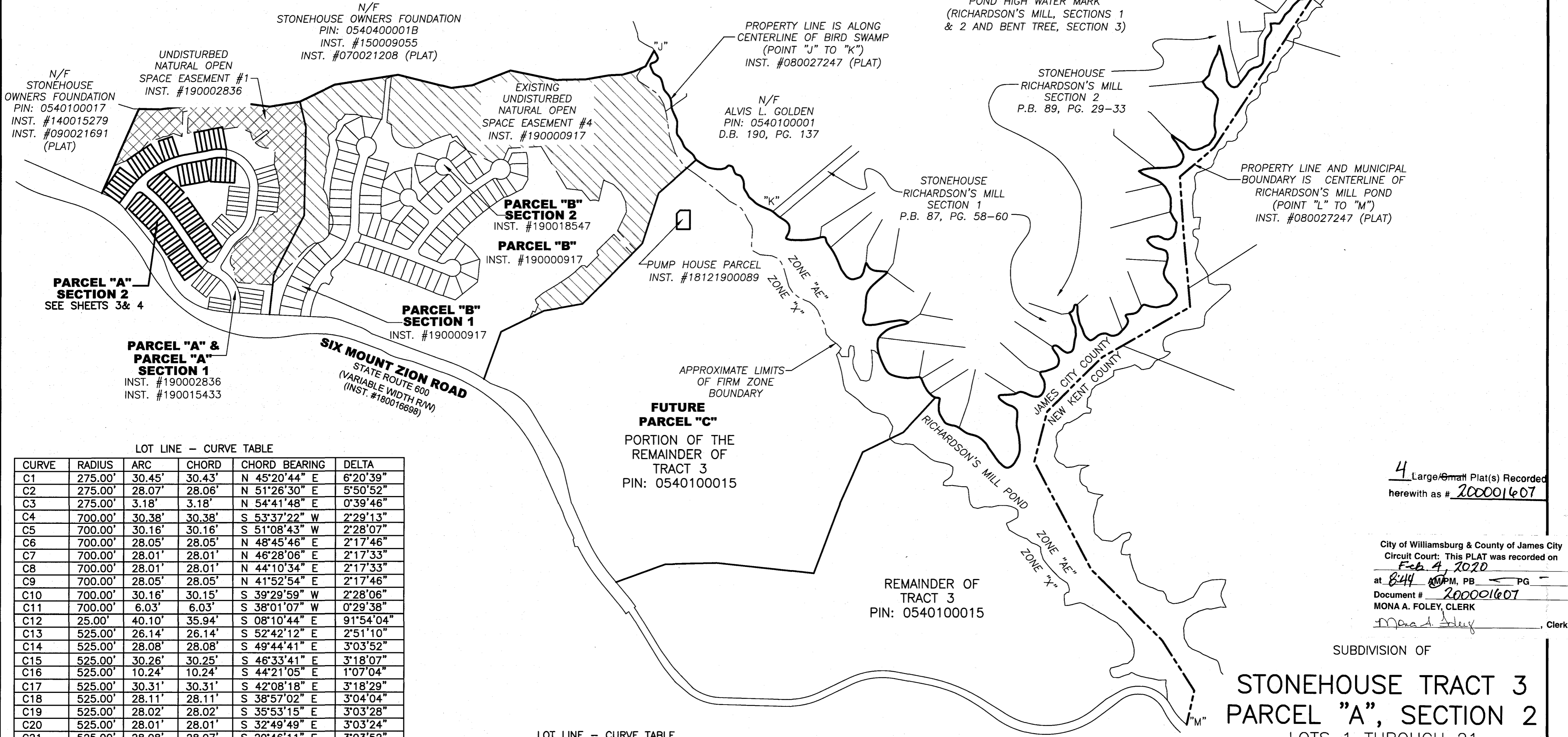


200001607

STONEHOUSE TRACT 3

VA STATE PLANE
SOUTH ZONE
(NAD 83)

NOTE:
THIS PLAT CREATES 1.791 ACRES OF OPEN SPACE #1, 1.284 ACRES OF OPEN SPACE #2, & 2.033 ACRES OF OPEN SPACE #3. ADDITIONAL AREAS OF OPEN SPACE #1 & OPEN SPACE #2 FALL WITHIN PARCEL "A" FUTURE DEVELOPMENT AREA AND WILL BE CREATED BY PLATTING OF FUTURE SUBDIVISION SECTIONS OF PARCEL "A"

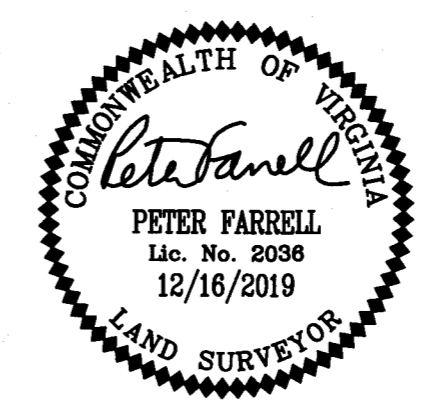
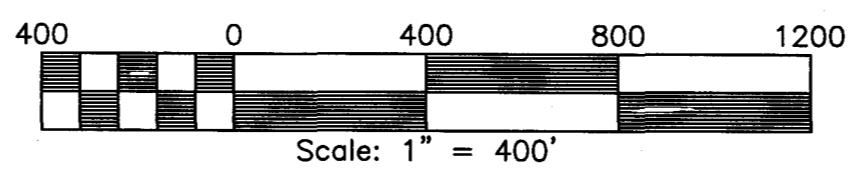


LOT LINE - CURVE TABLE

CURVE	RADIUS	ARC	CHORD	CHORD BEARING	DELTA
C1	275.00'	30.45'	30.43'	N 45°20'44" E	6°20'39"
C2	275.00'	28.07'	28.06'	N 51°26'30" E	5°50'52"
C3	275.00'	3.18'	3.18'	N 54°41'48" E	0°39'46"
C4	700.00'	30.38'	30.38'	S 53°37'22" W	2°29'13"
C5	700.00'	30.16'	30.16'	S 51°08'43" W	2°28'07"
C6	700.00'	28.05'	28.05'	N 48°45'46" E	2°17'46"
C7	700.00'	28.01'	28.01'	N 46°28'06" E	2°17'33"
C8	700.00'	28.01'	28.01'	N 44°10'34" E	2°17'33"
C9	700.00'	28.05'	28.05'	N 41°52'54" E	2°17'46"
C10	700.00'	30.16'	30.15'	S 39°29'59" W	2°28'06"
C11	700.00'	6.03'	6.03'	S 38°01'07" W	0°29'38"
C12	25.00'	40.10'	35.94'	S 08°10'44" E	91°54'04"
C13	525.00'	26.14'	26.14'	S 52°42'12" E	2°51'10"
C14	525.00'	28.08'	28.08'	S 49°44'41" E	3°03'52"
C15	525.00'	30.26'	30.25'	S 46°33'41" E	3°18'07"
C16	525.00'	10.24'	10.24'	S 44°21'05" E	1°07'04"
C17	525.00'	30.31'	30.31'	S 42°08'18" E	3°18'29"
C18	525.00'	28.11'	28.11'	S 38°57'02" E	3°04'04"
C19	525.00'	28.02'	28.02'	S 35°53'15" E	3°03'28"
C20	525.00'	28.01'	28.01'	S 32°49'49" E	3°03'24"
C21	525.00'	28.08'	28.07'	S 29°46'11" E	3°03'52"
C22	525.00'	30.25'	30.25'	S 26°35'12" E	3°18'06"
C23	525.00'	10.97'	10.97'	S 24°20'15" E	1°11'49"
C24	525.00'	30.07'	30.07'	S 22°05'52" E	3°16'56"
C25	525.00'	28.01'	28.00'	S 18°55'43" E	3°03'23"
C26	525.00'	30.03'	30.03'	S 15°45'42" E	3°16'39"
C27	525.00'	37.67'	37.66'	N 12°17'11" W	4°06'39"
C28	225.00'	23.26'	23.24'	S 07°16'12" E	5°55'19"
C29	225.00'	28.41'	28.39'	S 00°41'30" E	7°14'06"
C30	225.00'	31.42'	31.40'	S 06°55'36" W	8°00'06"
C31	175.00'	32.97'	32.92'	S 27°26'13" W	10°47'40"
C32	175.00'	28.91'	28.88'	N 17°18'23" E	9°28'00"
C33	175.00'	28.13'	28.10'	N 07°58'05" E	9°12'37"
C34	175.00'	28.11'	28.08'	N 01°14'20" W	9°12'14"
C35	175.00'	13.41'	13.41'	N 08°02'09" W	4°23'25"
C36	475.00'	28.02'	28.01'	N 11°56'09" W	3°22'46"
C37	475.00'	30.13'	30.12'	S 15°26'34" E	3°38'04"
C38	475.00'	188.40'	187.17'	S 28°22'47" E	22°43'31"
C39	25.00'	37.96'	34.42'	S 83°14'31" E	86°59'57"

LOT LINE - CURVE TABLE

CURVE	RADIUS	ARC	CHORD	CHORD BEARING	DELTA
C40	25.00'	6.41'	6.39'	N 45°54'52" E	14°41'18"
C41	750.00'	23.72'	23.72'	S 39°28'35" W	1°48'43"
C42	750.00'	28.05'	28.05'	S 41°27'14" W	2°08'36"
C43	750.00'	28.01'	28.01'	S 43°35'43" W	2°08'23"
C44	750.00'	28.00'	28.00'	S 45°44'06" W	2°08'22"
C45	750.00'	28.04'	28.04'	S 47°52'32" W	2°08'31"
C46	750.00'	30.12'	30.12'	S 50°05'50" W	2°18'04"
C47	750.00'	11.81'	11.81'	S 51°41'56" W	0°54'08"
C48	750.00'	30.02'	30.01'	S 53°17'47" W	2°17'35"
C49	750.00'	7.68'	7.68'	S 54°44'11" W	0°35'13"
C50	225.00'	25.57'	25.56'	N 51°46'36" E	6°30'40"
C51	225.00'	21.06'	21.05'	N 45°50'24" E	5°21'43"



4 Large/Small Plat(s) Recorded
herewith as # 200001607

City of Williamsburg & County of James City
Circuit Court: This PLAT was recorded on
Feb 4, 2020
at 8:44 AM, PM, PB, PG
Document # 200001607
MONA A. FOLEY, CLERK
Mona A. Foley, Clerk

SUBDIVISION OF
STONEHOUSE TRACT 3
PARCEL "A", SECTION 2
LOTS 1 THROUGH 21
LOTS 42 THROUGH 77
& LOTS 87 THROUGH 97

STONEHOUSE DISTRICT JAMES CITY COUNTY VIRGINIA
DATE: 12/16/2019 JOB # 17-378

LandTech Resources, Inc.
Engineering & Surveying Consultants
3925 Midlands Road, Williamsburg, Virginia 23188
Phone: (757) 565-1677 Fax: (757) 565-0782
web: landtechresources.com

SHEET 2 OF 4
JCC: S-19-0031