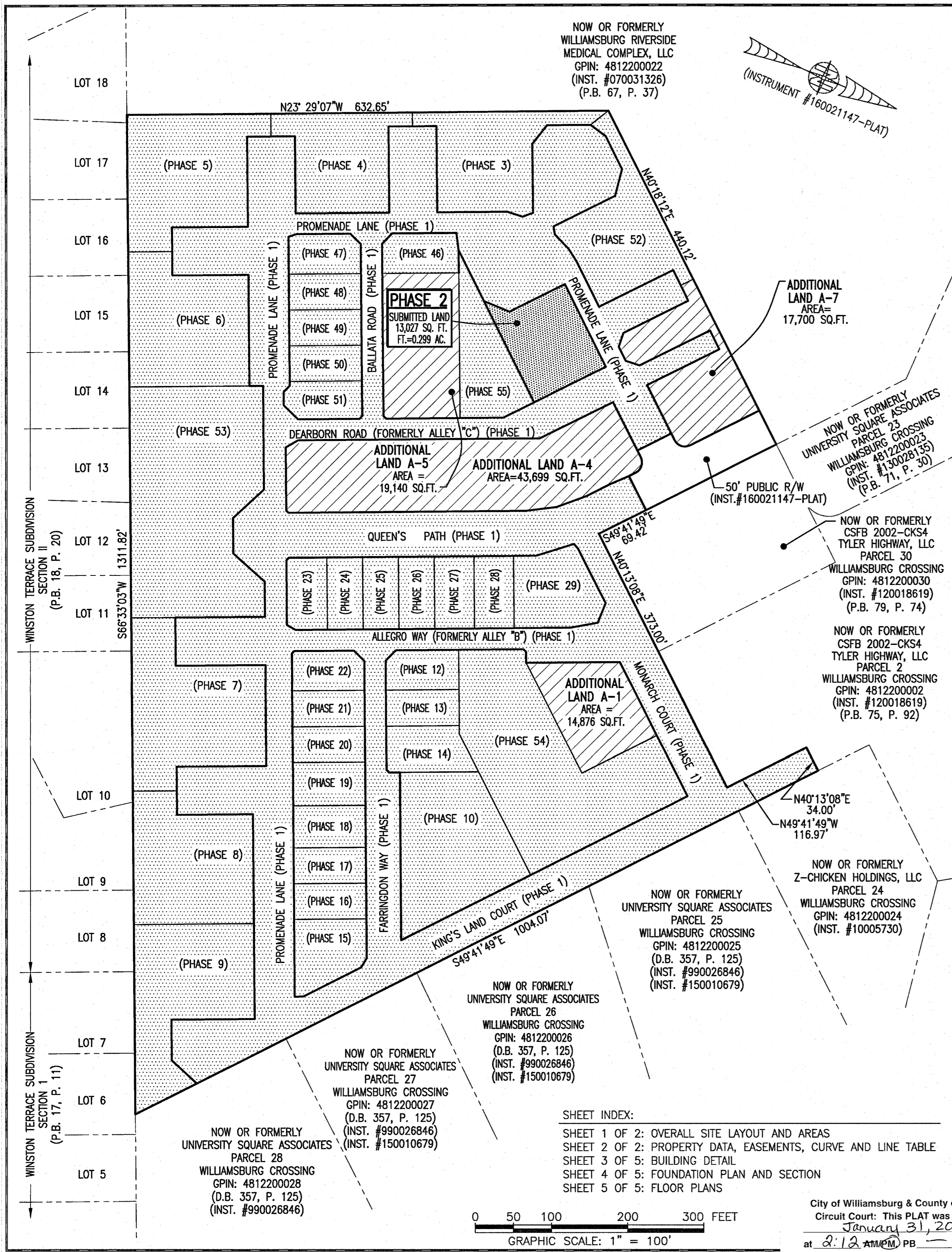
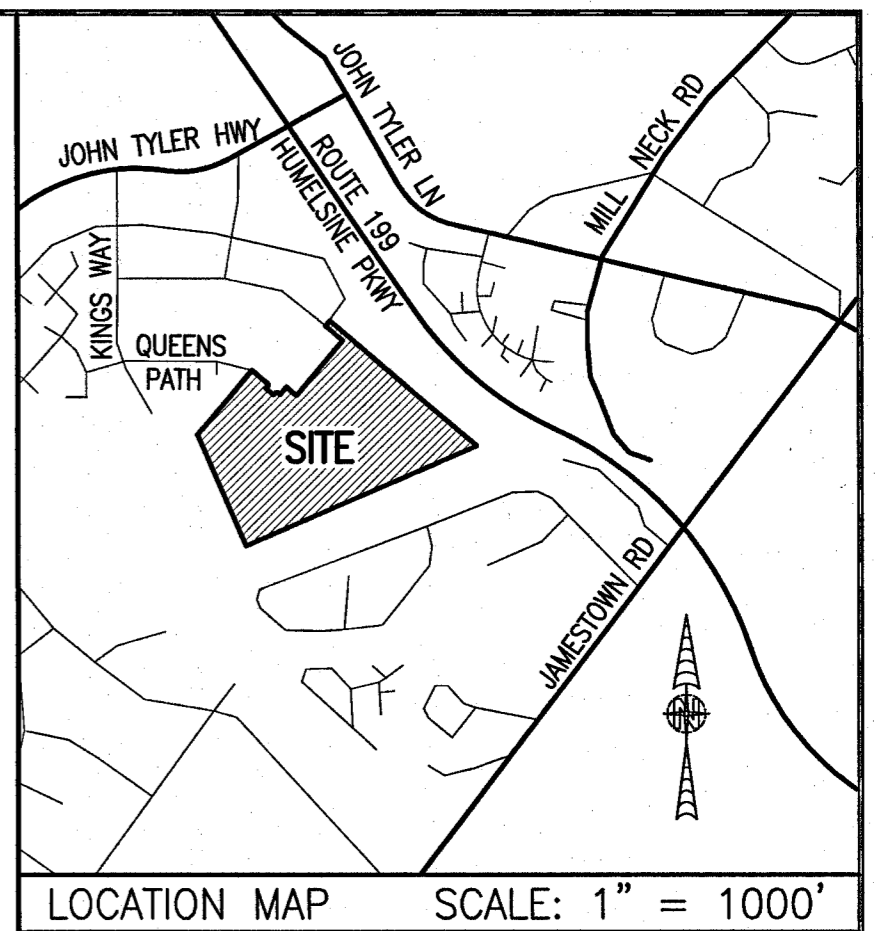


200001502

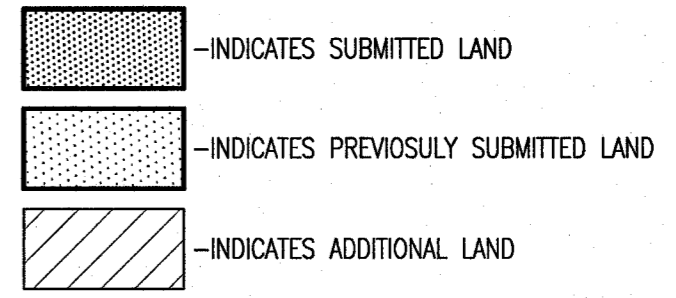
I HEREBY CERTIFY THAT THIS PLAT IS ACCURATE AND THAT IT COMPLIES WITH THE PROVISIONS OF THE CODE OF VIRGINIA OF 1950 AS AMENDED, § 55.1-1920A & B AND I FURTHER CERTIFY THAT ALL IMPROVEMENTS THEREOF DEPICTED HEREON, PURSUANT TO THE CODE OF VIRGINIA § 55.1-1920A, ARE SUBSTANTIALLY COMPLETE.



AREA TABLE				
PHASE	BLDG#	STATUS/RECORDATION	SQUARE FEET	ACRES
1	N/A	INSTR.#170011679	268,468	6.163
2	2	SUBSTANTIALLY COMPLETE	13,027	0.299
3	3	INSTR.#190014842	19,053	0.437
4	4	INSTR.#190007409	17,652	0.405
5	5	INSTR.#190001499	26,166	0.601
6	6	INSTR.#180018358	24,875	0.571
7	7	INSTR.#180014663	28,822	0.662
8	8	INSTR.#180010369	24,539	0.563
9	9	INSTR.#180003694	25,978	0.596
10	10	INSTR.#170023466	25,806	0.592
12	12	INSTR.#180016847	4,949	0.114
13	13	INSTR.#180010007	4,512	0.104
14	14	INSTR.#180009579	6,462	0.148
15	15	INSTR.#190001143	7,841	0.180
16	16	INSTR.#190001141	4,467	0.103
17	17	INSTR.#190001140	4,467	0.103
18	18	INSTR.#180019704	5,273	0.121
19	19	INSTR.#180019705	5,367	0.123
20	20	INSTR.#180016210	4,465	0.103
21	21	INSTR.#180016209	4,465	0.103
22	22	INSTR.#180016208	4,892	0.112
23	23	INSTR.#180001768	5,014	0.115
24	24	INSTR.#180005480	4,464	0.102
25	25	INSTR.#180001779	4,466	0.103
26	26	INSTR.#170021156	4,465	0.102
27	27	INSTR.#170021157	4,944	0.114
28	28	INSTR.#180001781	4,936	0.113
29	29	NOT YET RECORDED	10,569	0.243
46	46	NOT YET RECORDED	5,153	0.118
47	47	INSTR.#190009757	4,879	0.112
48	48	INSTR.#190010971	4,465	0.103
49	49	INSTR.#190011650	4,465	0.102
50	50	INSTR.#190013854	4,465	0.103
51	51	INSTR.#190014841	4,848	0.111
52	1	INSTR.#190017561	18,301	0.420
53	N/A	INSTR.#180014662	49,886	1.145
54	N/A	INSTR.#190007408	43,080	0.989
55	N/A	INSTR.#190011651	11,268	0.259
ADDITIONAL LAND A-1			14,876	0.341
ADDITIONAL LAND A-4			43,699	1.003
ADDITIONAL LAND A-5			19,140	0.439
ADDITIONAL LAND A-7			17,700	0.406
TOTAL: NEW PARCEL 29			816,629	18.747

LEGAL DESCRIPTION
 PROPERTY SHOWN HEREON BEING "NEW PARCEL 29" CONTAINING 18.747 ACRES AS SHOWN ON "PLAT OF LOT LINE EXTINGUISHMENT BEING PARCELS 20 AND 29 OF WILLIAMSBURG CROSSING" PREPARED BY AES CONSULTING ENGINEERS, DATED 10-24-16 AND RECORDED AS INSTRUMENT NO. 160021147.

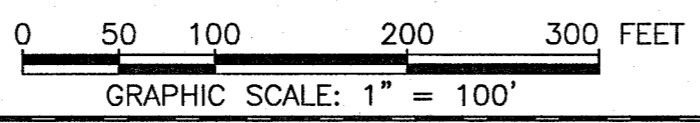
NOTES:
 1. PHASE 2 BUILDING 2 IS SUBSTANTIALLY COMPLETE.
 2. EASEMENTS AND BUILDING LINES SHOWN HEREON PER THE FOLLOWING:
 - ALTA SURVEY BY AES CONSULTING ENGINEERS, DATED 3-23-15
 - PLAT BY AES CONSULTING ENGINEERS, DATED 10-24-16, INST.#160021147
 - PLAN OF DEVELOPMENT BY AES CONSULTING ENGINEERS, DATED 9-8-16



THIS SHEET: OVERALL SITE LAYOUT AND AREAS

PHASE 2 CONDOMINIUM PLAT AND PLAN OF THE PROMENADE AT JOHN TYLER A CONDOMINIUM JAMES CITY COUNTY, VIRGINIA

Hayden Frye and Associates, Inc.
 Land Surveyors
 DATE: JANUARY 17, 2020
 333 KELLAM ROAD, SUITE 200
 VIRGINIA BEACH, VA, 23462
 PH: (757) 491-7228 FX: (757) 491-7229
 SCALE: 1"=100'
 SHEET 1 OF 5 THIS PHASE

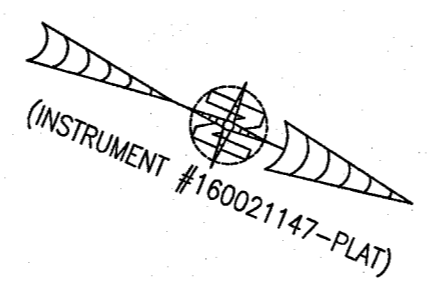


City of Williamsburg & County of James City
 Circuit Court: This PLAT was recorded on
 January 31, 2020
 at 2:12 AM PM, PB PG
 Document # 200001502
 MONA A. FOLEY, CLERK
 Clerk

JCC Subdivision Agent E66
 Approval Not Required

5 (Large) Small Plat(s) Recorded
 herewith as # 200001502

NOW OR FORMERLY
 WILLIAMSBURG RIVERSIDE
 MEDICAL COMPLEX, LLC
 GPIN: 4812200022
 (INST. #070031326)
 (P.B. 67, P. 37)



ADDITIONAL
 LAND A-7
 AREA=
 17,700 SQ.FT.

NOW OR FORMERLY
 UNIVERSITY SQUARE ASSOCIATES
 PARCEL 23
 WILLIAMSBURG CROSSING
 GPIN: 4812200023
 (INST. #150028135)
 (P.B. 71, P. 30)

NOW OR FORMERLY
 CSFB 2002-CKS4
 TYLER HIGHWAY, LLC
 PARCEL 30
 WILLIAMSBURG CROSSING
 GPIN: 4812200030
 (INST. #120018619)
 (P.B. 79, P. 74)

NOW OR FORMERLY
 CSFB 2002-CKS4
 TYLER HIGHWAY, LLC
 PARCEL 2
 WILLIAMSBURG CROSSING
 GPIN: 4812200002
 (INST. #120018619)
 (P.B. 75, P. 92)

N40°13'08"E
 34.00'
 N49°41'49"W
 116.97'

NOW OR FORMERLY
 Z-CHICKEN HOLDINGS, LLC
 PARCEL 24
 WILLIAMSBURG CROSSING
 GPIN: 4812200024
 (INST. #10005730)

NOW OR FORMERLY
 UNIVERSITY SQUARE ASSOCIATES
 PARCEL 25
 WILLIAMSBURG CROSSING
 GPIN: 4812200025
 (D.B. 357, P. 125)
 (INST. #990026846)
 (INST. #150010679)

NOW OR FORMERLY
 UNIVERSITY SQUARE ASSOCIATES
 PARCEL 26
 WILLIAMSBURG CROSSING
 GPIN: 4812200026
 (D.B. 357, P. 125)
 (INST. #990026846)
 (INST. #150010679)

NOW OR FORMERLY
 UNIVERSITY SQUARE ASSOCIATES
 PARCEL 27
 WILLIAMSBURG CROSSING
 GPIN: 4812200027
 (D.B. 357, P. 125)
 (INST. #990026846)
 (INST. #150010679)

NOW OR FORMERLY
 UNIVERSITY SQUARE ASSOCIATES
 PARCEL 28
 WILLIAMSBURG CROSSING
 GPIN: 4812200028
 (D.B. 357, P. 125)
 (INST. #990026846)

SHEET INDEX:
 SHEET 1 OF 2: OVERALL SITE LAYOUT AND AREAS
 SHEET 2 OF 2: PROPERTY DATA, EASEMENTS, CURVE AND LINE TABLE
 SHEET 3 OF 5: BUILDING DETAIL
 SHEET 4 OF 5: FOUNDATION PLAN AND SECTION
 SHEET 5 OF 5: FLOOR PLANS