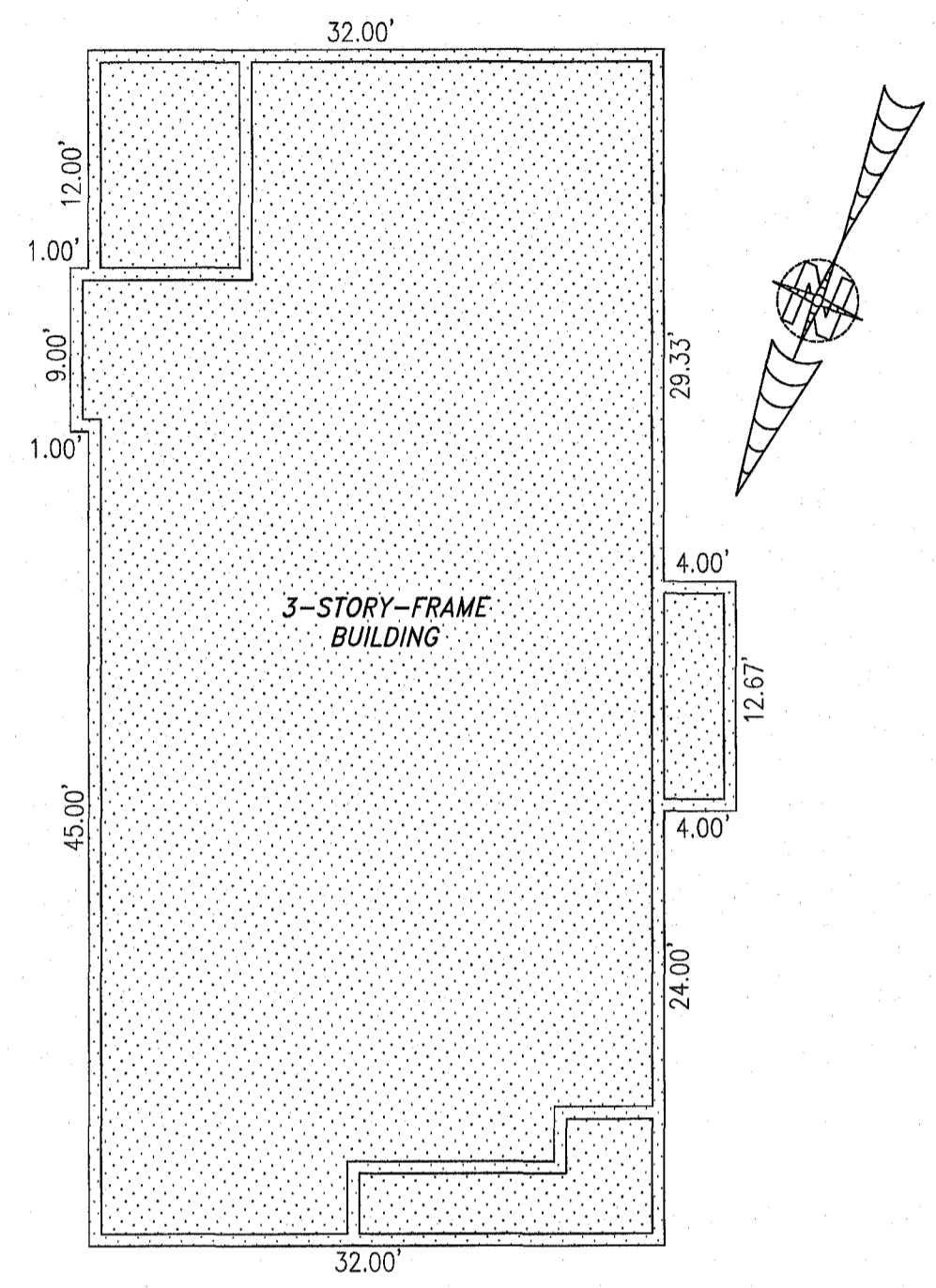


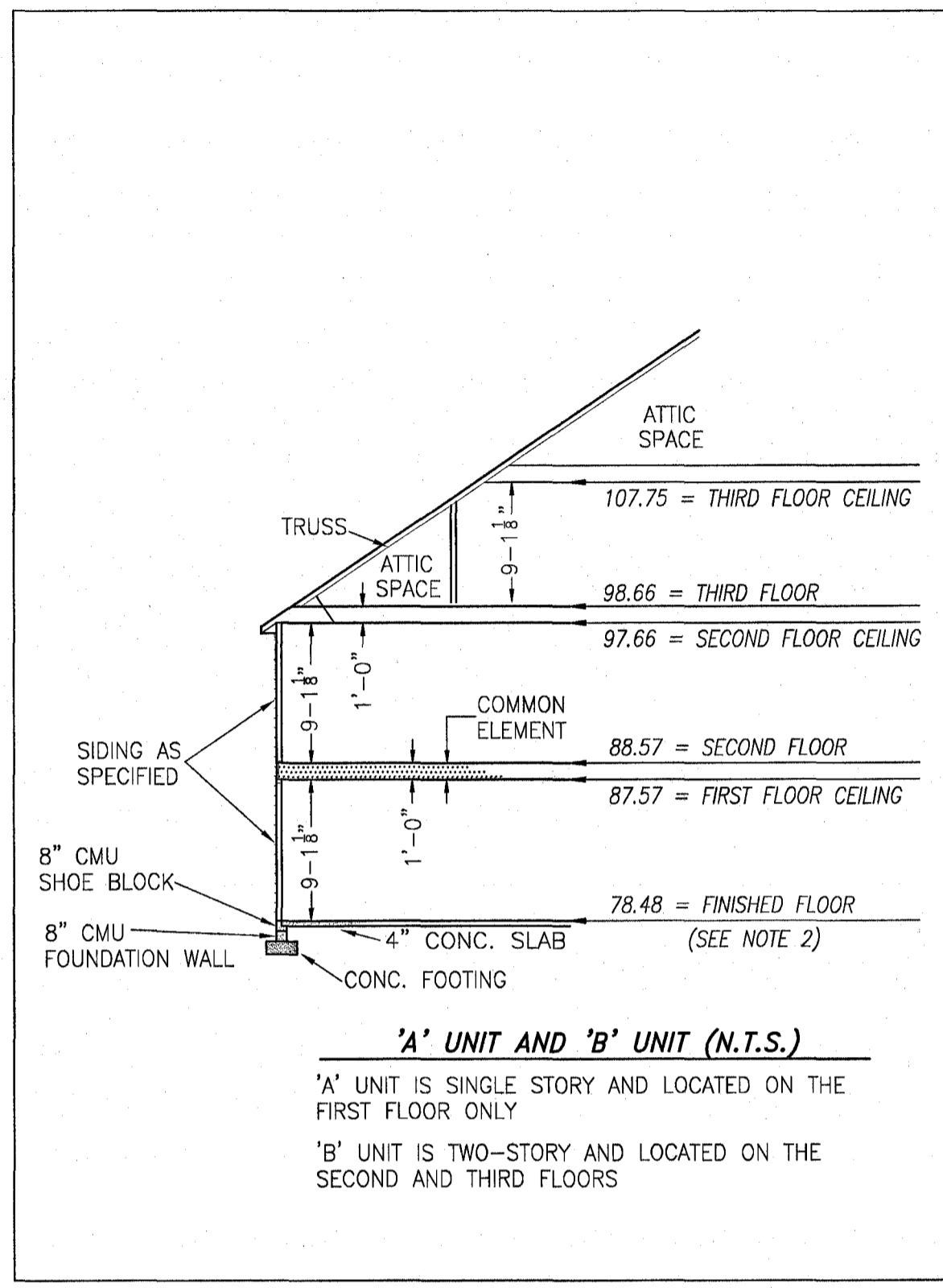
20000900

# BUILDING 46 (DUPLEX)



\*THE FOUNDATIONS ARE PART OF THE "COMMON ELEMENTS" AND NOT PART OF THE UNITS.

## FOUNDATION PLAN



**'A' UNIT AND 'B' UNIT (N.T.S.)**

'A' UNIT IS SINGLE STORY AND LOCATED ON THE FIRST FLOOR ONLY

'B' UNIT IS TWO-STORY AND LOCATED ON THE SECOND AND THIRD FLOORS

## TYPICAL BUILDING SECTION

NOT TO SCALE (N.T.S.)

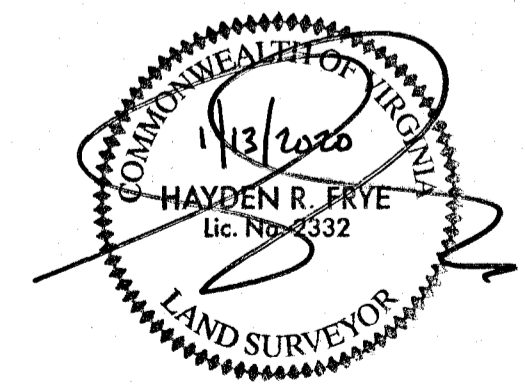
### NOTES:

1. VERTICAL DATUM REFERENCE: NATIONAL GEODETIC VERTICAL DATUM OF 1929 (NGVD29).
2. FINISHED FLOOR ELEVATION SHOWN WAS TAKEN FROM AS-BUILT SURVEY OF BUILDING #46 (DUPLEX) THE PROMENADE AT JOHN TYLER BY HAYDEN FRYE AND ASSOCIATES. FIELD WORK WAS PERFORMED ON 12-13-19.

I HEREBY CERTIFY THAT THIS PLAT IS ACCURATE AND THAT IT COMPLIES WITH THE PROVISIONS OF THE CODE OF VIRGINIA OF 1950 AS AMENDED, § 55.1-1920A & B AND I FURTHER CERTIFY THAT ALL IMPROVEMENTS THEREOF DEPICTED HEREON, PURSUANT TO THE CODE OF VIRGINIA § 55.1-1920B, ARE SUBSTANTIALLY COMPLETE.

5 Large/Small Plat(s) Recorded  
herewith as # 20000900

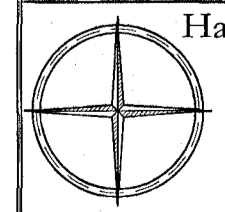
City of Williamsburg & County of James City  
Circuit Court: This PLAT was recorded on  
January 21, 2020  
at 2:48 AM/PM PB PG  
Document # 20000900  
MONA A. FOLEY, CLERK  
Mona A. Foley, Clerk



THIS SHEET: FOUNDATION PLAN AND SECTION

**PHASE 46**  
**CONDOMINIUM PLAT AND PLAN**  
OF  
**THE PROMENADE**  
AT  
**JOHN TYLER**  
A CONDOMINIUM  
JAMES CITY COUNTY, VIRGINIA

Jo# 160921



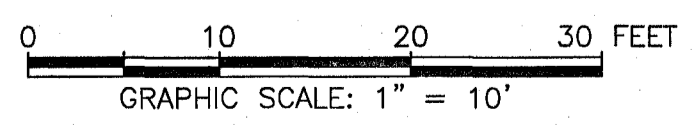
Hayden Frye and Associates, Inc.  
**Land Surveyors**  
333 KELLAM ROAD, SUITE 200  
VIRGINIA BEACH, VA, 23462  
PH: (757) 491-7228 FX: (757) 491-7229

DATE: JANUARY 7, 2020

SCALE: 1"=10'

SHEET 4 OF 5 THIS PHASE

-INDICATES COMMON ELEMENT



JCC Subdivision Agent  
Approval Not Required *664*