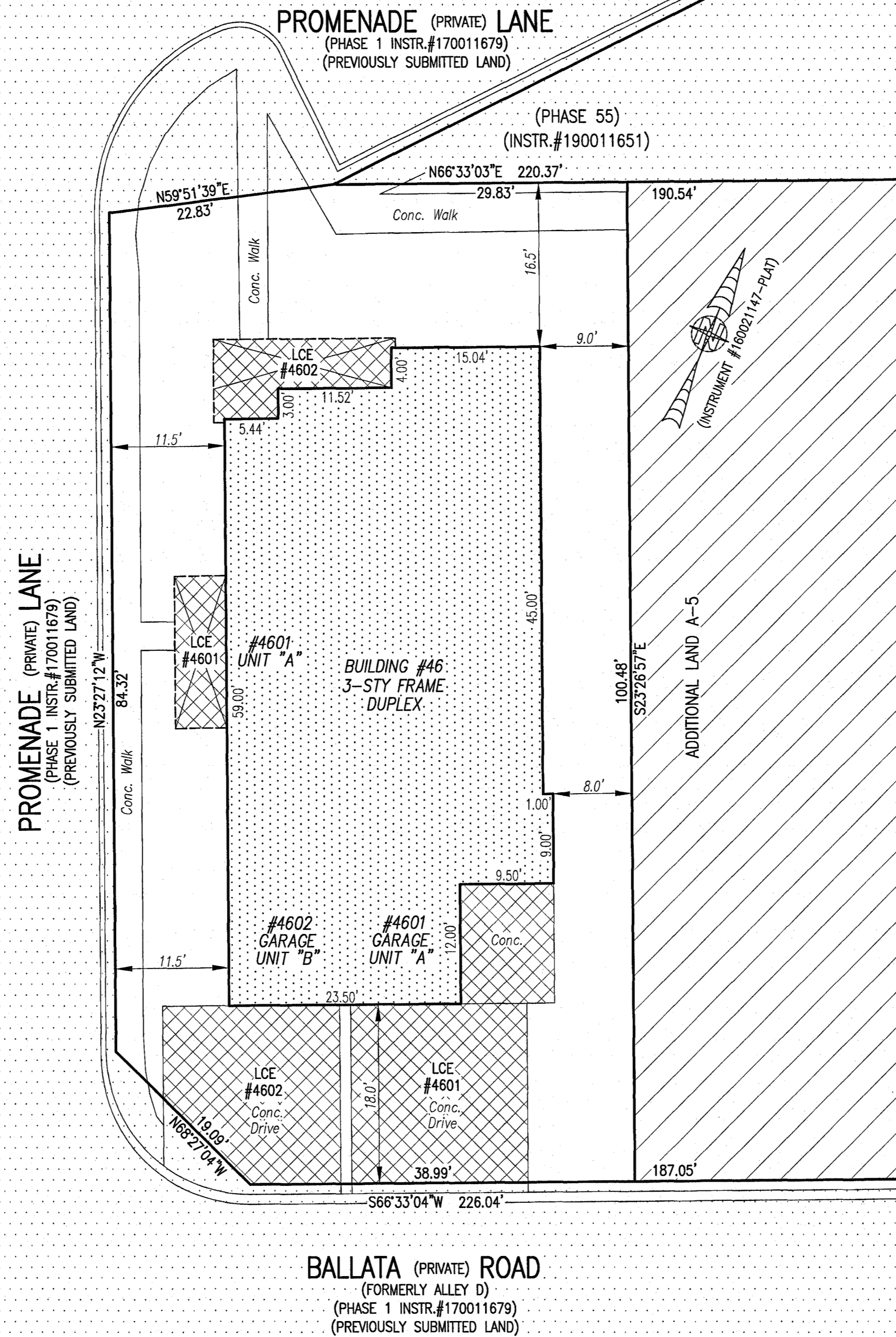
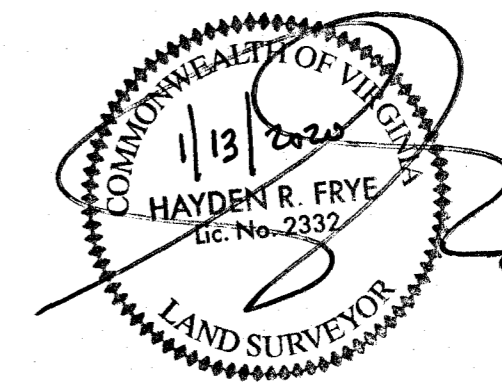
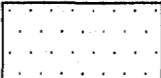


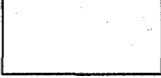
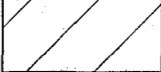


20000900

I HEREBY CERTIFY THAT THIS PLAT IS ACCURATE AND THAT IT COMPLIES WITH THE PROVISIONS OF THE CODE OF VIRGINIA OF 1950 AS AMENDED, § 55.1-1920A & B AND I FURTHER CERTIFY THAT ALL IMPROVEMENTS THEREOF DEPICTED HEREON, PURSUANT TO THE CODE OF VIRGINIA § 55.1-1920A, ARE SUBSTANTIALLY COMPLETE.



-  -INDICATES PREVIOUSLY SUBMITTED LAND
-  -INDICATES BUILDING AREA (SEE PLANS FOR UNIT DIMENSIONS)
-  -INDICATES LIMITED COMMON ELEMENT (LCE) ASSIGNED TO A UNIT # UNIT ASSIGNED
-  -INDICATES COMMON ELEMENT (EXCLUDING AREAS OUTSIDE SUBMITTED LAND)
-  -INDICATES ADDITIONAL LAND

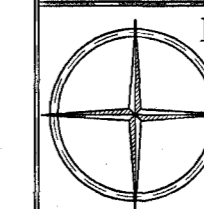
5 Large/Small Plat(s) Recorded  
herewith as # 20000900

City of Williamsburg & County of James City  
Circuit Court: This PLAT was recorded on  
January 21, 2020  
at 2:48 AM/PM PB PG  
Document # 20000900  
MONA A. FOLEY, CLERK  
*Mona A. Foley*, Clerk

THIS SHEET: BUILDING DETAIL

**PHASE 46**  
**CONDOMINIUM PLAT AND PLAN**  
OF  
**THE PROMENADE**  
AT  
**JOHN TYLER**  
A CONDOMINIUM  
JAMES CITY COUNTY, VIRGINIA

Jo# 160921

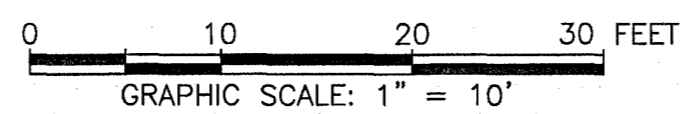


Hayden Frye and Associates, Inc.  
**Land Surveyors**  
333 KELLAM ROAD, SUITE 200  
VIRGINIA BEACH, VA, 23462  
PH: (757) 491-7228 FX: (757) 491-7229

DATE: JANUARY 7, 2020

SCALE: 1"=10'

SHEET 3 OF 5 THIS PHASE



JCC Subdivision Agent *EGG*  
Approval Not Required