

20000819

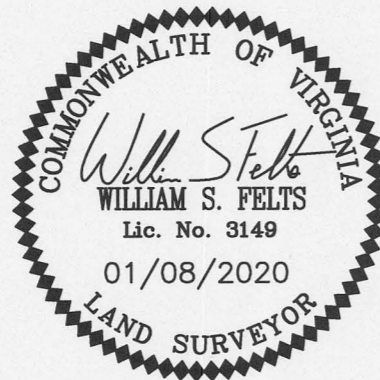
SURVEYORS CERTIFICATE

I HEREBY CERTIFY THAT THE PLAN PREVIOUSLY RECORDED FOR GOVERNOR'S GROVE AT FIVE FORKS, A CONDOMINIUM AT INSTRUMENT NO. 160009184 ACCURATELY DEPICTS THE UNIT AND RELATED IMPROVEMENTS SHOWN AND THAT THEY COMPLY WITH THE CODE OF VIRGINIA OF 1950, AS AMENDED §55-79.58(B) AND ARE SUBSTANTIALLY COMPLETE.

I HEREBY CERTIFY THAT THIS PLAT IS ACCURATE AND THAT IT COMPLIES WITH THE CODE OF VIRGINIA OF 1950, AS AMENDED, §55-79.58, AND I FURTHER CERTIFY THAT ALL IMPROVEMENTS OR PORTIONS THEREOF DEPICTED HEREON, PURSUANT TO THE CODE OF VIRGINIA, §55-79.58(A), ARE SUBSTANTIALLY COMPLETE.

William S. Felts
WILLIAM S. FELTS LIC. #3149

01/08/2020
DATE



JCC Subdivision Agent
Approval Not Required

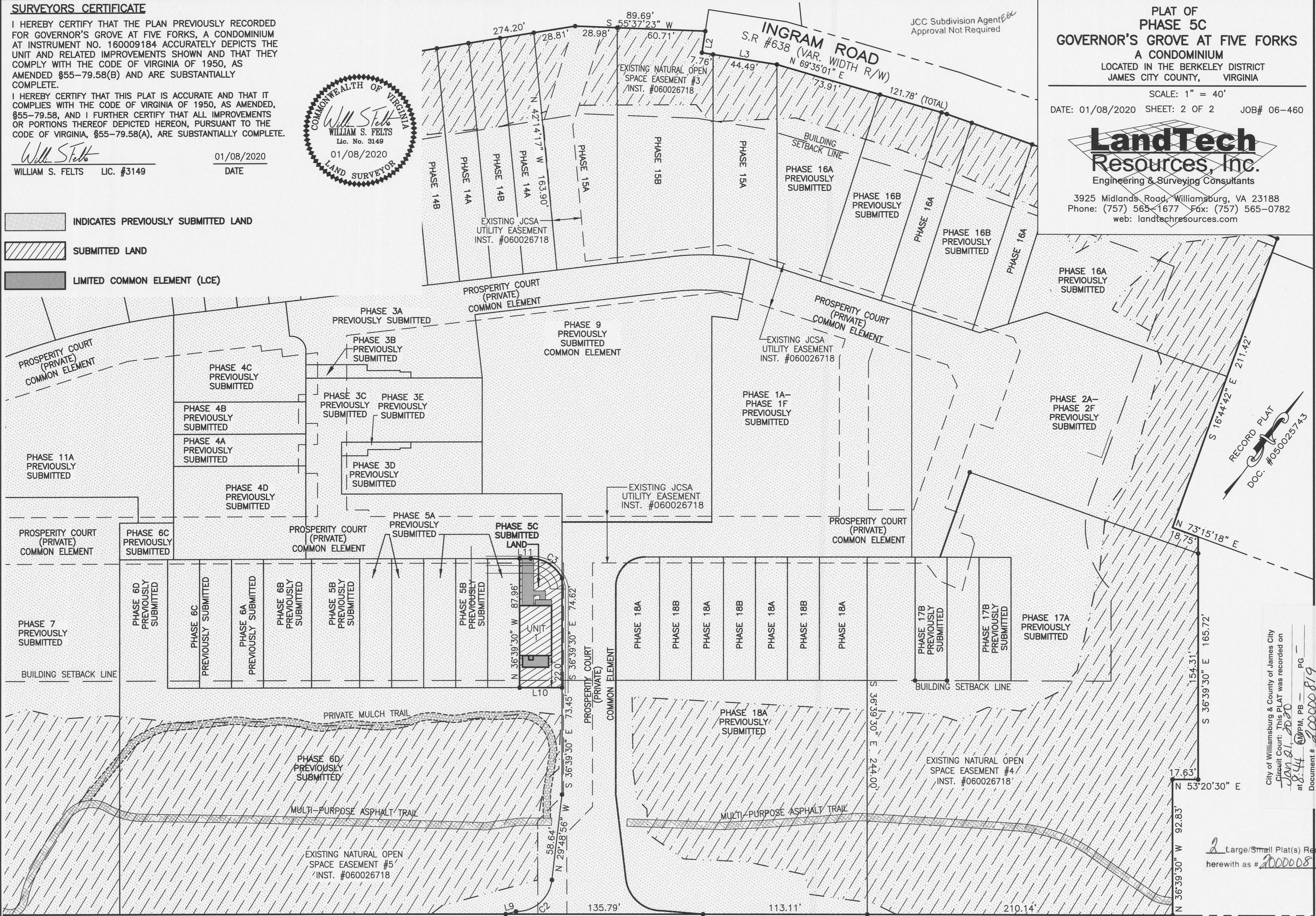
PLAT OF
PHASE 5C
GOVERNOR'S GROVE AT FIVE FORKS
A CONDOMINIUM
LOCATED IN THE BERKELEY DISTRICT
JAMES CITY COUNTY, VIRGINIA

SCALE: 1" = 40'
DATE: 01/08/2020 SHEET: 2 OF 2 JOB# 06-460

LandTech
Resources, Inc.
Engineering & Surveying Consultants

3925 Midlands Road, Williamsburg, VA 23188
Phone: (757) 565-1677 Fax: (757) 565-0782
web: landtechresources.com

- INDICATES PREVIOUSLY SUBMITTED LAND
- SUBMITTED LAND
- LIMITED COMMON ELEMENT (LCE)



RECORD PLAT
DOC. #050025743

City of Williamsburg & County of James City
Circuit Court: This PLAT was recorded on
Jan 21, 2020
at 8:44 AM, PB - PG -
Document # 20000819
MONA A. FOLEY, CLERK
Mona Foley, Clerk

2 Large/Small Plat(s) Recorded
herewith as #20000819

CURVE	RADIUS	ARC LENGTH	CHORD LENGTH	CHORD BEARING	DELTA ANGLE
C2	24.50'	36.06'	32.89'	N 12°20'41" E	84°19'13"
C3	24.00'	26.65'	25.30'	S 85°08'43" W	63°37'28"

JOHN TYLER HIGHWAY
STATE ROUTE #5
(VARIABLE WIDTH PUBLIC R/W)

LINE	BEARING	DISTANCE
L9	N 39°07'58" E	7.31'
L10	S 53°19'59" W	29.23'
L11	S 53°19'59" W	7.72'

