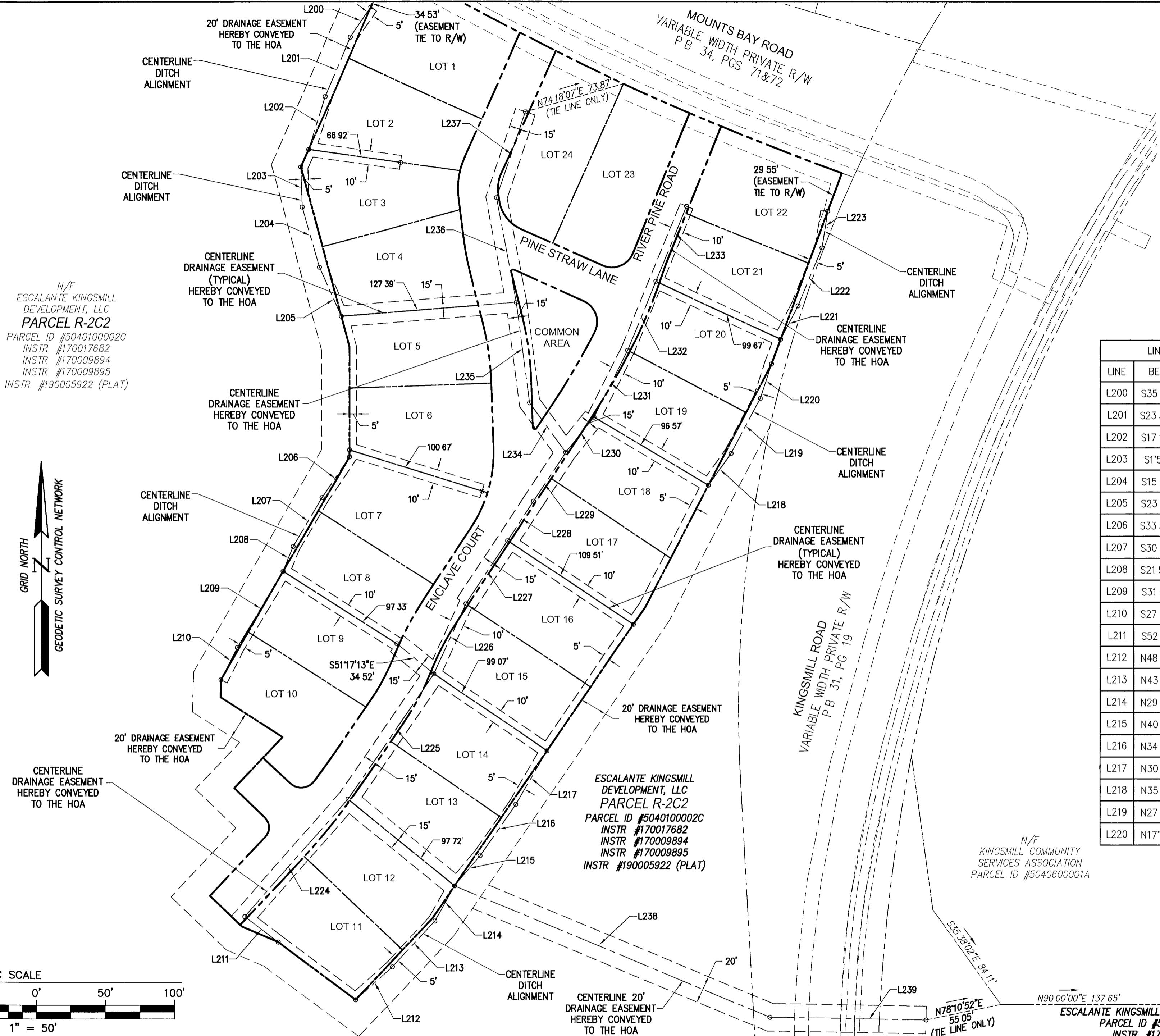
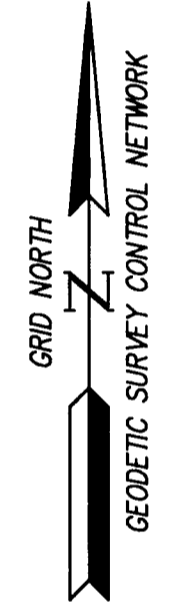


190017999

SEE SHEETS 2 AND 3 FOR ROAD CENTERLINE AND BUILDING SETBACKS

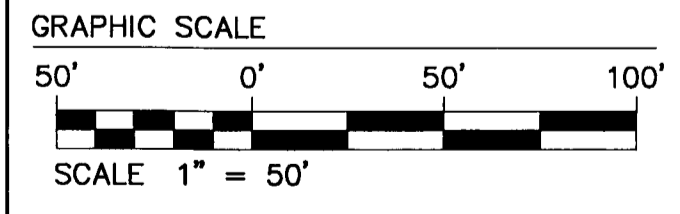
**ABBREVIATIONS:**  
 HOA = HOMEOWNER'S ASSOCIATION  
 TYP = TYPICAL  
 N/F = NOW OR FORMERLY  
 ESMT = EASEMENT

N/F  
 ESCALANTE KINGSMILL DEVELOPMENT, LLC  
**PARCEL R-2C2**  
 PARCEL ID #5040100002C  
 INSTR #170017682  
 INSTR #170009894  
 INSTR #170009895  
 INSTR #190005922 (PLAT)



LINE	BEARING	LENGTH
L200	S35 01'19"W	26 16'
L201	S23 34'46"W	45 18'
L202	S17 17'33"W	39 95'
L203	S1 50'57"E	29 27'
L204	S15 50'40"E	45 17'
L205	S23 55'56"E	38 58'
L206	S33 50'58"W	35 50'
L207	S30 31'39"W	40 91'
L208	S21 57'26"W	19 50'
L209	S31 07'11"W	64 35'
L210	S27 13'59"W	26 00'
L211	S52 45'10"E	30 39'
L212	N48 20'20"E	35 77'
L213	N43 06'19"E	45 17'
L214	N29 22'20"E	29 09'
L215	N40 32'10"E	28 66'
L216	N34 57'00"E	45 17'
L217	N30 17'04"E	45 05'
L218	N35 40'16"E	28 24'
L219	N27 57'00"E	45 05'
L220	N17 58'27"E	26 10'

LINE	BEARING	LENGTH
L221	N27 27'47"E	27 27'
L222	N22 26'12"E	45 17'
L223	N8 55'06"E	26 74'
L224	N41 18'17"E	112 96'
L225	N34 33'04"E	109 71'
L226	N24 43'13"E	55 67'
L227	N33 32'15"E	54 71'
L228	N33 32'15"E	34 02'
L229	N33 30'57"E	42 38'
L230	N38 47'44"E	32 75'
L231	N26 50'27"E	54 13'
L232	N22 18'05"E	53 78'
L233	N22 18'05"E	58 66'
L234	N36 06'40"W	44 49'
L235	N7 33'09"W	73 31'
L236	N10 47'50"W	76 79'
L237	N18 40'02"E	65 72'
L238	S67 29'07"E	248 09'
L239	S88 56'16"E	113 44'



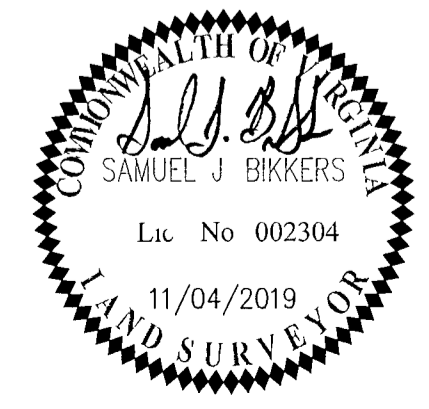
ESCALANTE KINGSMILL DEVELOPMENT, LLC  
**PARCEL R-2C2**  
 PARCEL ID #5040100002C  
 INSTR #170017682  
 INSTR #170009894  
 INSTR #170009895  
 INSTR #190005922 (PLAT)

N/F  
 KINGSMILL COMMUNITY SERVICES ASSOCIATION  
 PARCEL ID #5040600001A

REF JCC CASE NO S-18-0068

2 Large/Small Plat(s) Recorded herewith as # 190017999

City of Williamsburg & County of James City  
 Circuit Court. This PLAT was recorded on  
 DEC 4th 2019  
 at 1:37 AM (PM) PG --  
 Document # 190017999  
 MONA A FOLEY, CLERK  
 Clerk



PLAT OF SUBDIVISION  
**KINGSMILL TOWNHOMES**  
**"THE ENCLAVE"**  
 FOR  
**ESCALANTE GOLF**  
 ROBERTS DISTRICT      JAMES CITY COUNTY      VIRGINIA

Project Contacts	GVC
Project Number	7753-49
Scale	Date
1"=50'	05/13/2019
Sheet Number	
<b>5 OF 7</b>	