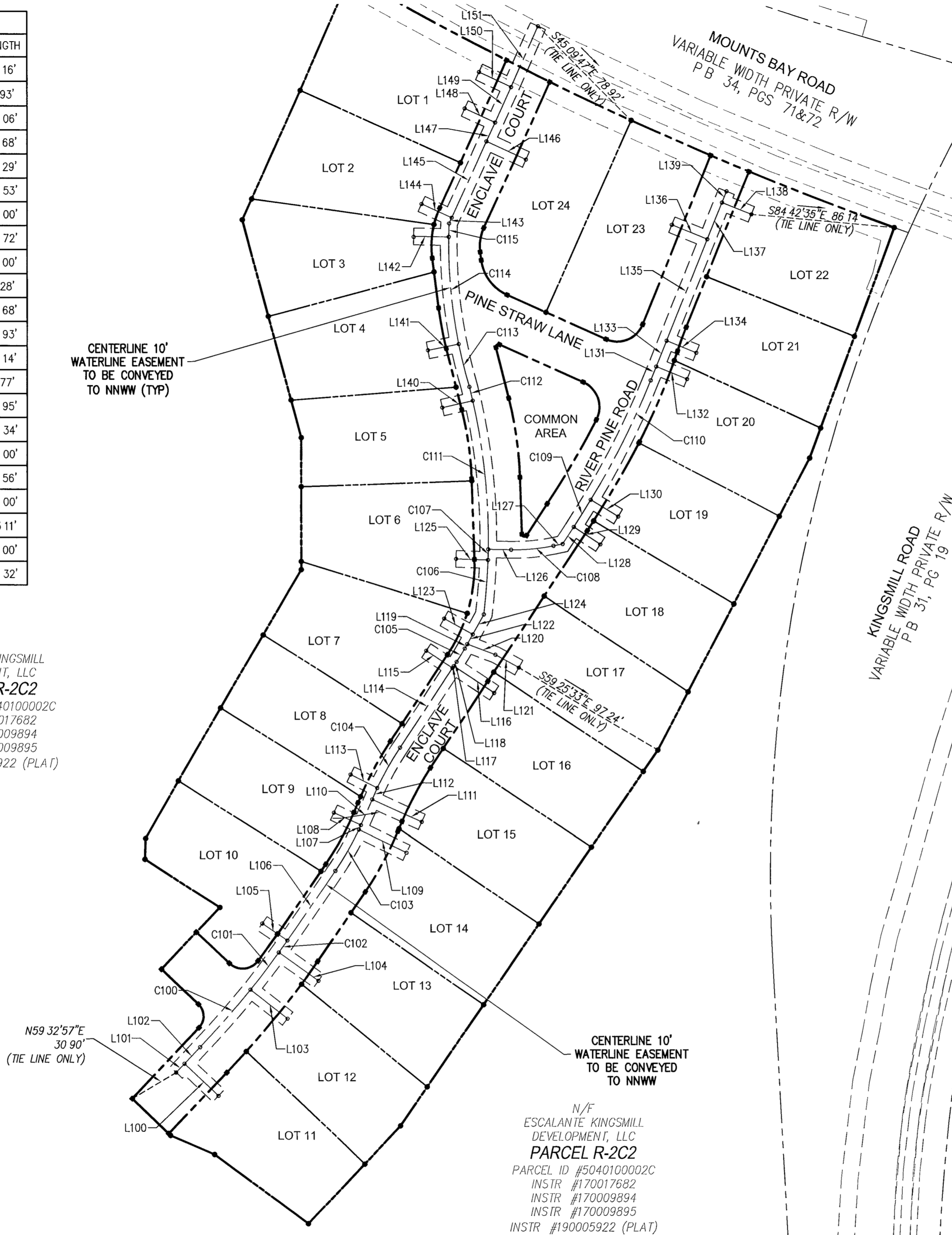


190017999

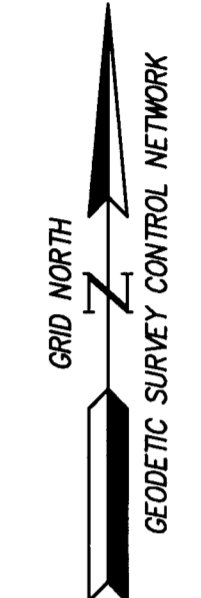
LINE	BEARING	LENGTH
L100	N46 33'16"W	27 98'
L101	N43 26'50"E	7 28'
L102	N43 26'50"E	13 55'
L103	S51 28'21"E	28 00'
L104	S54 30'50"E	29 00'
L105	N55 28'20"W	18 00'
L106	N34 31'40"E	50 73'
L107	N24 04'55"E	2 96'
L108	N65 22'55"W	17 95'
L109	S64 26'53"E	32 00'
L110	N24 04'55"E	16 94'
L111	S65 43'41"E	32 85'
L112	N24 04'55"E	7 46'
L113	N63 46'18"W	18 00'
L114	N33 31'40"E	57 27'
L115	N56 28'20"W	19 00'
L116	S56 28'20"E	29 00'
L117	N33 31'40"E	1 41'
L118	N33 31'40"E	3 14'
L119	N28 58'45"E	3 07'
L120	S68 58'47"E	18 04'
L121	S61 01'15"E	16 04'
L122	N28 58'45"E	6 70'
L123	N61 01'15"W	19 59'
L124	N28 58'45"E	13 67'
L125	N88 06'43"W	19 14'
L126	S89 05'16"E	13 70'
L127	N78 31'40"E	5 65'
L128	N33 31'19"E	12 25'
L129	S56 36'02"E	19 00'

LINE	BEARING	LENGTH
L130	S58 46'36"E	19 16'
L131	N22 00'49"E	8 93'
L132	S67 59'08"E	20 06'
L133	N22 00'49"E	16 68'
L134	S67 59'08"E	19 29'
L135	N22 00'49"E	65 53'
L136	N67 59'08"W	23 00'
L137	N22 00'49"E	23 72'
L138	S67 59'08"E	19 00'
L139	N22 00'49"E	7 28'
L140	S77 07'16"W	18 68'
L141	S78 35'29"W	18 93'
L142	N89 12'47"W	21 14'
L143	N24 28'05"E	3 77'
L144	N65 31'55"W	19 95'
L145	N24 28'05"E	50 34'
L146	S65 31'55"E	26 00'
L147	N24 28'05"E	12 56'
L148	N65 31'55"W	20 00'
L149	N24 28'05"E	23 11'
L150	N65 31'55"W	21 00'
L151	N24 28'05"E	39 32'

N/F  
 ESCALANTE KINGSMILL  
 DEVELOPMENT, LLC  
**PARCEL R-2C2**  
 PARCEL ID #5040100002C  
 INSTR #170017682  
 INSTR #170009894  
 INSTR #170009895  
 INSTR #190005922 (PLAT)



SEE SHEETS 2 AND 3 FOR ROAD CENTERLINE AND BUILDING SETBACKS



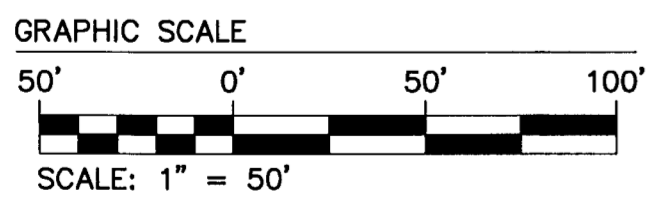
N/F  
 KINGSMILL COMMUNITY  
 SERVICES ASSOCIATION  
 PARCEL ID #5040600001A

CURVE #	DELTA	RADIUS	LENGTH	TANGENT	CHORD	CHORD BEARING
C100	5 00'01"	524 50'	45 77'	22 90	45 76	N41 01' 39"E
C101	3 02'29"	524 50'	27 84'	13 92	27 84	N37 00' 24"E
C102	0 57'30"	524 50'	8 77'	4 39	8 77	N35 00' 25"E
C103	8 58'32"	181 50'	28 43'	14 25	28 40	N30 02' 23"E
C104	7 17'54"	218 50'	27 83'	13 94	27 81	S29 52' 39"W
C105	4 32'55"	119 00'	9 45'	4 73	9 44	N31 15' 12"E
C106	5 01'46"	372 98'	32 74'	16 38	32 73	N4 24' 11"E
C107	0 58'33"	372 98'	6 35'	3 18	6 35	N1 24' 01"E
C108	12 23'04"	119 00'	25 72'	12 91	25 67	N84 43' 12"E
C109	2 10'34"	500 00'	18 99'	9 50	18 99	N32 18' 41"E
C110	9 12'32"	500 00'	80 36'	40 27	80 28	N26 37' 08"E
C111	13 47'28"	372 98'	89 78'	45 11	89 56	N5 59' 00"W
C112	1 18'37"	372 98'	8 53'	4 26	8 53	N13 32' 02"W
C113	5 00'12"	303 00'	26 46'	13 24	26 45	S13 54' 36"E
C114	12 11'43"	303 00'	64 49'	32 37	64 37	S5 18' 39"E
C115	1 31'42"	303 00'	8 08'	4 04	8 08	S1 33' 03"W

WATERLINE EASEMENT SHALL BE COMPRISED OF A 5' LEFT AND RIGHT OFFSET FROM THE WATERLINE EASEMENT CENTERLINE TO CREATE A 10' EASEMENT UNLESS OTHERWISE NOTED. SEE TABLE THIS SHEET FOR EXCEPTIONS

ABBREVIATIONS.	
HOA	= HOMEOWNER'S ASSOCIATION
TYP	= TYPICAL
N/F	= NOW OR FORMERLY
ESMT	= EASEMENT

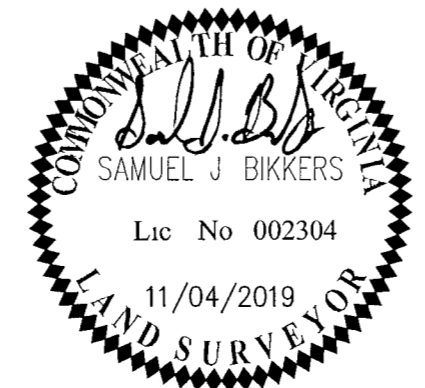
NNWW WATERLINE EASEMENTS



N/F  
 ESCALANTE KINGSMILL  
 DEVELOPMENT, LLC  
**PARCEL R-2C2**  
 PARCEL ID #5040100002C  
 INSTR #170017682  
 INSTR #170009894  
 INSTR #170009895  
 INSTR #190005922 (PLAT)

2 Large/Small Plat(s) Recorded herewith as # 190017999

City of Williamsburg & County of James City Circuit Court This PLAT was recorded on DEC 4 2019 at 1:37 AM (PM) PB PG Document # 190017999 MONA A FOLEY, CLERK



**AES**  
 CONSULTING ENGINEERS  
 5248 Olde Towne Road, Suite 1  
 Williamsburg, Virginia 23188  
 Phone (757) 253-0040  
 Fax (757) 220-8994  
 www.aesva.com

REF JCC CASE NO S-18-0068

PLAT OF SUBDIVISION  
**KINGSMILL TOWNHOMES  
 "THE ENCLAVE"**  
 FOR  
 ESCALANTE GOLF

ROBERTS DISTRICT      JAMES CITY COUNTY      VIRGINIA

Project Contacts      GVC  
 Project Number      7753-49  
 Scale      Date  
 1"=50'      05/13/2019  
 Sheet Number  
**4 OF 7**