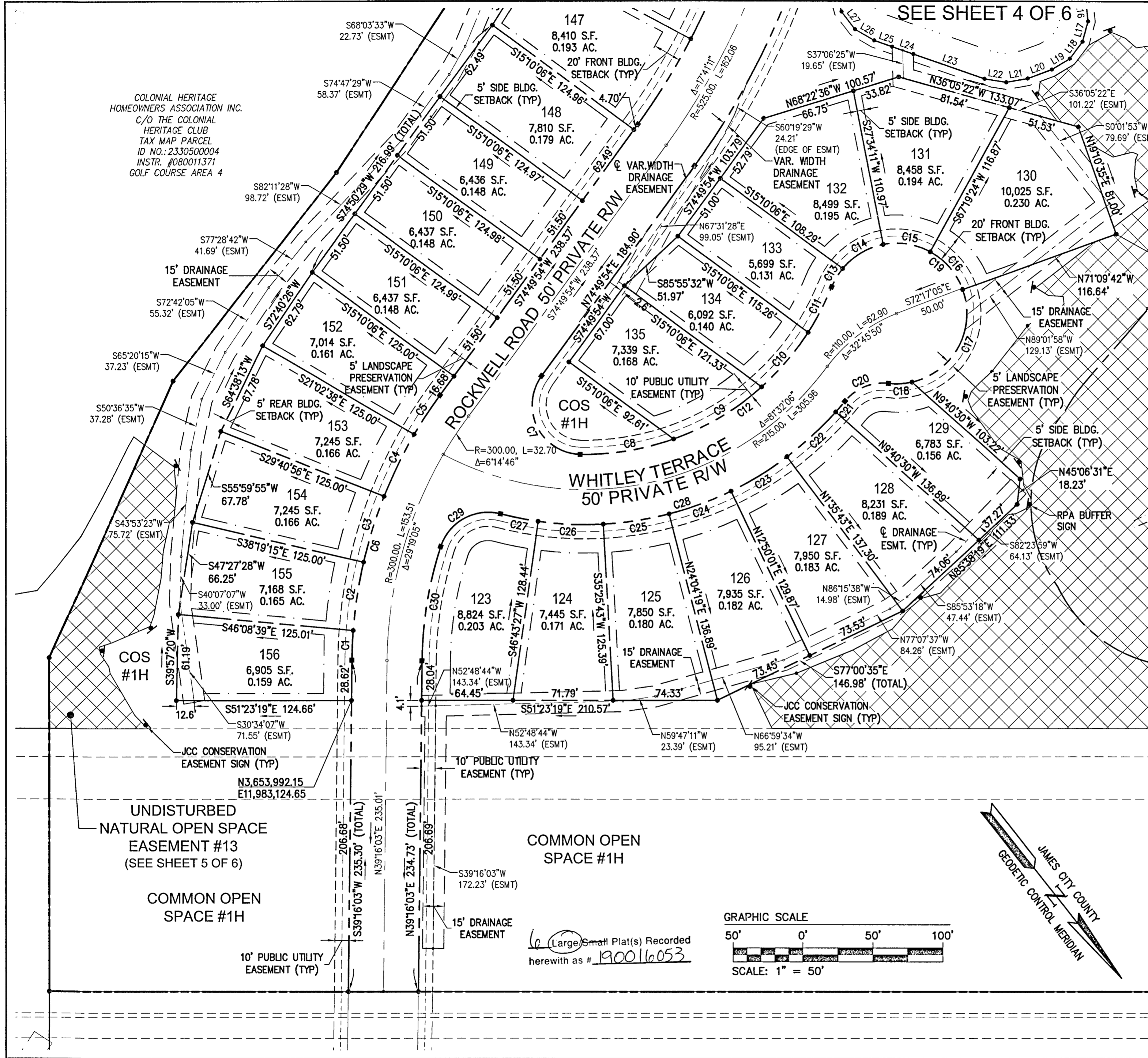


190016053

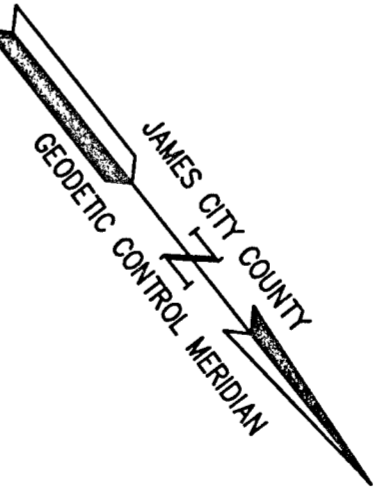
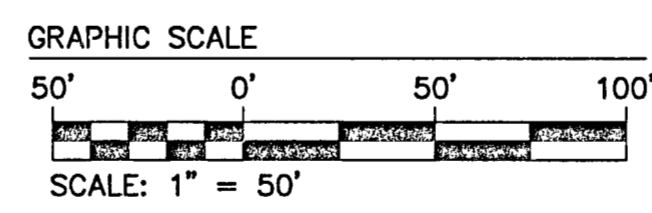
SEE SHEET 4 OF 6

LEGEND:

- UNDISTURBED NATURAL OPEN SPACE EASEMENT AND CONSERVATION AREA
- EXISTING NATURAL OPEN SPACE EASEMENT AND CONSERVATION AREA



CURVE TABLE						
CURVE #	DELTA	RADIUS	LENGTH	TANGENT	CHORD	CHORD BEARING
C1	3°43'49"	325.00'	21.16'	10.58'	21.16'	S41°07'57"W
C2	8°40'53"	325.00'	49.24'	24.67'	49.20'	S47°20'19"W
C3	8°38'18"	325.00'	49.00'	24.55'	48.95'	S55°59'54"W
C4	8°38'18"	325.00'	49.00'	24.55'	48.95'	S64°38'13"W
C5	5°52'32"	325.00'	33.33'	16.68'	33.31'	S71°53'38"W
C6	35°33'52"	325.00'	201.73'	104.23'	198.51'	S57°02'58"W
C7	125°14'04"	35.00'	76.50'	67.57'	62.16'	N12°12'52"E
C8	20°30'24"	190.00'	68.00'	34.37'	67.64'	N60°39'22"W
C9	22°07'08"	190.00'	73.35'	37.14'	72.89'	N81°58'07"W
C10	15°28'19"	190.00'	51.31'	25.81'	51.15'	S79°14'09"W
C11	10°54'36"	190.00'	36.18'	18.14'	36.12'	S66°02'42"W
C12	69°00'26"	190.00'	228.84'	130.60'	215.25'	N84°54'23"W
C13	17°40'51"	50.00'	15.43'	7.78'	15.37'	S69°25'50"W
C14	39°17'56"	50.00'	34.29'	17.85'	33.63'	N82°04'47"W
C15	39°45'13"	50.00'	34.69'	18.08'	34.00'	N42°33'12"W
C16	41°30'54"	50.00'	36.23'	18.95'	35.44'	N1°55'09"W
C17	96°59'39"	50.00'	84.64'	56.51'	74.89'	N67°20'07"E
C18	19°24'29"	50.00'	16.94'	8.55'	16.86'	S54°27'49"E
C19	254°39'02"	50.00'	222.22'	65.57'	79.52'	N7°54'55"E
C20	57°18'33"	35.00'	35.01'	19.13'	33.57'	S73°24'50"E
C21	2°23'36"	240.00'	10.03'	5.01'	10.02'	N79°07'42"E
C22	11°16'13"	240.00'	47.21'	23.68'	47.13'	N85°57'36"E
C23	11°14'18"	240.00'	47.08'	23.61'	47.00'	S82°47'08"E
C24	11°14'18"	240.00'	47.08'	23.61'	47.00'	S71°32'50"E
C25	11°21'24"	240.00'	47.57'	23.86'	47.49'	S60°14'59"E
C26	11°10'35"	240.00'	46.82'	23.48'	46.74'	S48°59'00"E
C27	6°32'45"	240.00'	27.42'	13.72'	27.40'	S40°07'20"E
C28	65°13'09"	240.00'	273.21'	153.54'	258.68'	S69°27'32"E
C29	86°38'42"	35.00'	52.93'	33.01'	48.03'	S80°10'18"E
C30	17°14'18"	275.00'	82.74'	41.68'	82.43'	N47°53'12"E



Large/Small Plat(s) Recorded herewith as # 190016053

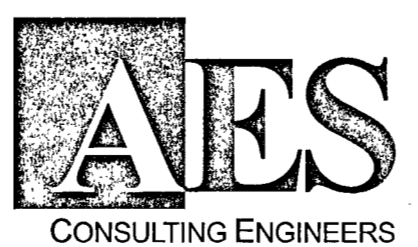
COLONIAL HERITAGE HOMEOWNERS ASSOCIATION INC. C/O THE COLONIAL HERITAGE CLUB TAX MAP PARCEL ID NO.: 2330500004 INSTR. #080011371 GOLF COURSE AREA 4

COS #1H
 UNDISTURBED NATURAL OPEN SPACE EASEMENT #12B (SEE SHEET 5 OF 6)
 JCC CONSERVATION EASEMENT SIGN (TYP)
 N3,654,073.52
 E11,982,491.73

UNDISTURBED NATURAL OPEN SPACE EASEMENT #13 (SEE SHEET 5 OF 6)
 COMMON OPEN SPACE #1H

COMMON OPEN SPACE #1H

City of Williamsburg & County of James City
 Circuit Court: This PLAT was recorded on November 1, 2019
 at 11:16 AM/PM, PG
 Document # 190016053
 MONA A. FOLEY, CLERK
 Clerk



5248 Olde Towne Road, Suite 1
 Williamsburg, Virginia 23188
 Phone: (757) 253-0040
 Fax: (757) 220-8994
 www.aesva.com

REF: JCC S-19-0023
 PLAT OF SUBDIVISION
 LOTS 123 THRU 156 AND COS #1H
**COLONIAL HERITAGE
 PHASE III - SECTION 2C**
 OWNER / DEVELOPER: COLONIAL HERITAGE, LLC
 STONEHOUSE DISTRICT JAMES CITY COUNTY VIRGINIA

Project Contacts: PCJ/TRS
 Project Number: 8881-32C
 Scale: 1"=50' Date: 03/12/19
 Sheet Number
3 of 6

Rev.	Date	Description	RMS Revised By
1	07/10/19	REVISED PER JCC COMMENTS DATED 04/2019	

S:\02058881\020 Plats\11\Sec2\001\Phase3\JCC\Plat\190016053.dwg, 8/19/2019 1:26:33 PM, rws, dwg