

190015433

BOUNDARY LINE ADJUSTMENT PLAT
 LOTS 22 THROUGH 33,
 LOTS 36 THROUGH 41,
 LOTS 78 THROUGH 86,
 OPEN SPACE #1 &
 PARCEL A FUTURE DEVELOPMENT
STONEHOUSE TRACT 3
PARCEL "A", SECTION 1

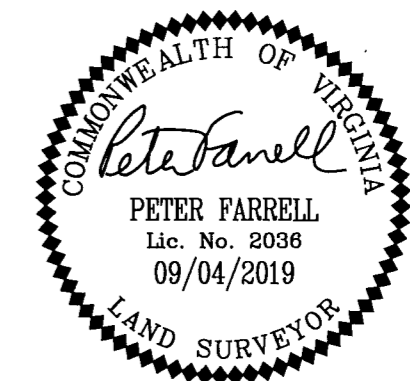
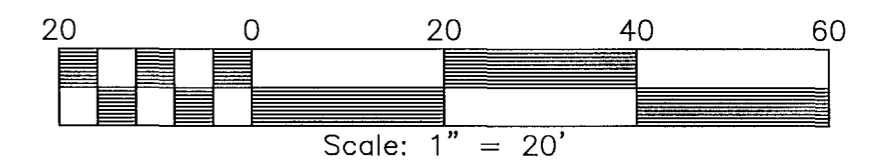
STONEHOUSE DISTRICT JAMES CITY COUNTY VIRGINIA

DATE: 09/04/2019 JOB # 17-378

LandTech
Resources, Inc.
 Engineering & Surveying Consultants
 3925 Midlands Road, Williamsburg, Virginia 23188
 Phone: (757) 565-1677 Fax: (757) 565-0782
 web: landtechresources.com

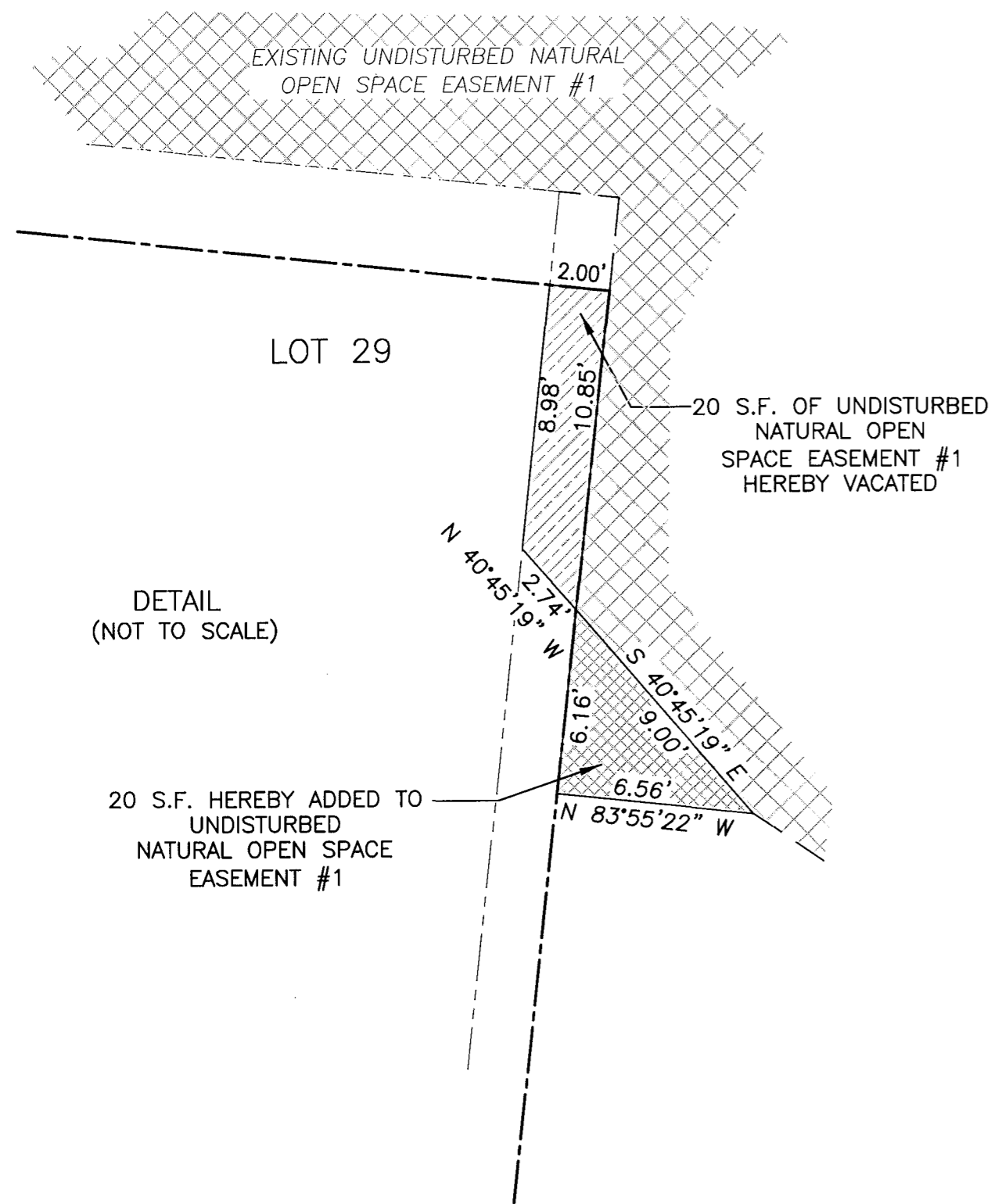
SHEET 4 OF 4

JCC-S-19-0065

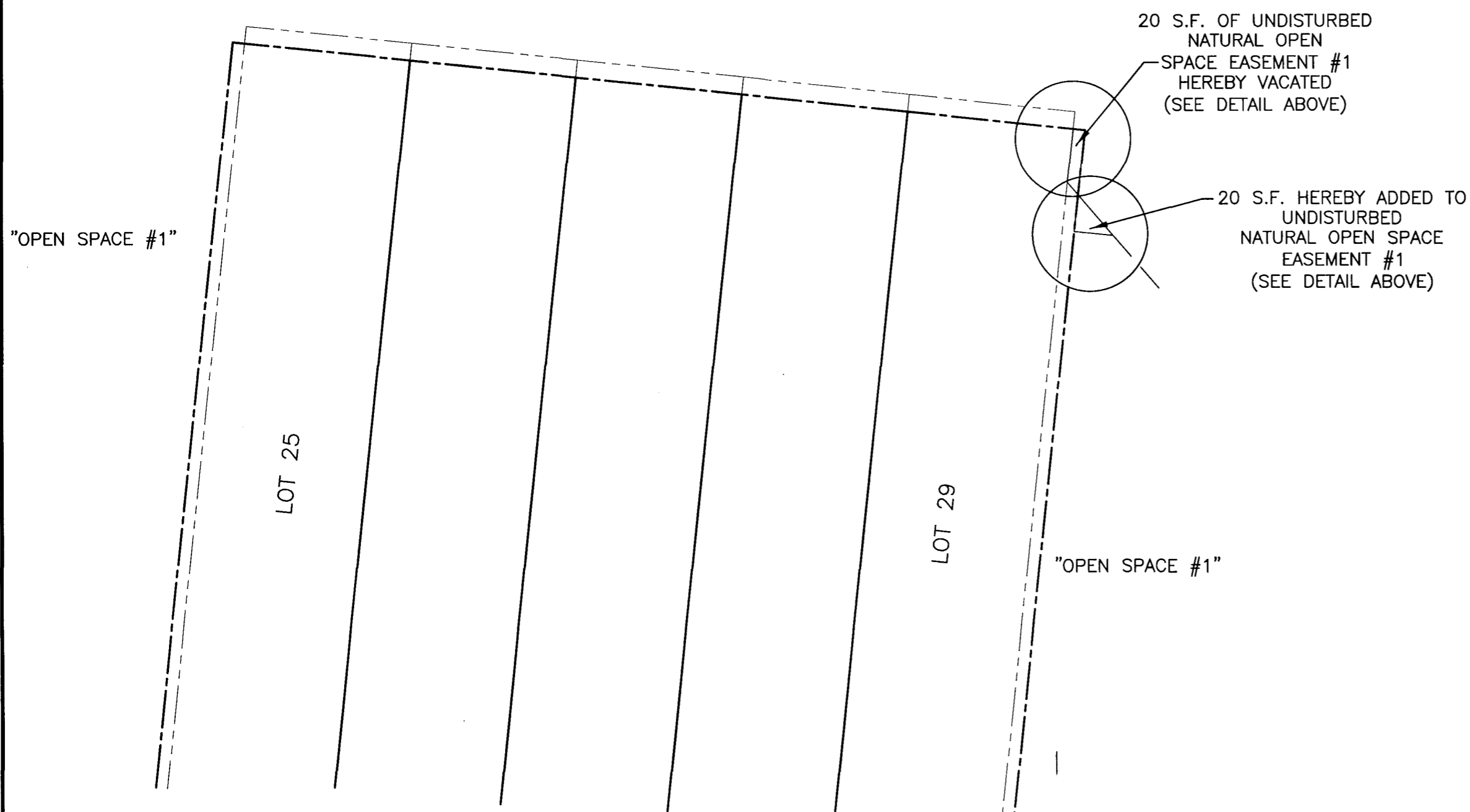


LOT AREA TABLE

LOT #	OLD AREA	NEW AREA
LOT 22	3,395 S.F. 0.078 AC.	3,492 S.F. 0.080 AC.
LOT 23	3,358 S.F. 0.077 AC.	3,218 S.F. 0.074 AC.
LOT 24	3,400 S.F. 0.078 AC.	3,517 S.F. 0.081 AC.
LOT 25	3,532 S.F. 0.081 AC.	3,698 S.F. 0.085 AC.
LOT 26	3,500 S.F. 0.080 AC.	3,416 S.F. 0.078 AC.
LOT 27	3,500 S.F. 0.080 AC.	3,416 S.F. 0.078 AC.
LOT 28	3,500 S.F. 0.080 AC.	3,416 S.F. 0.078 AC.
LOT 29	3,500 S.F. 0.080 AC.	3,660 S.F. 0.084 AC.
LOT 30	4,221 S.F. 0.097 AC.	4,450 S.F. 0.102 AC.
LOT 31	3,868 S.F. 0.089 AC.	3,784 S.F. 0.087 AC.
LOT 32	3,635 S.F. 0.083 AC.	3,551 S.F. 0.082 AC.
LOT 33	3,507 S.F. 0.081 AC.	3,423 S.F. 0.079 AC.
LOT 36	3,565 S.F. 0.082 AC.	3,719 S.F. 0.085 AC.
LOT 37	3,693 S.F. 0.085 AC.	3,664 S.F. 0.084 AC.
LOT 38	3,693 S.F. 0.085 AC.	3,807 S.F. 0.087 AC.
LOT 39	3,591 S.F. 0.082 AC.	3,451 S.F. 0.079 AC.
LOT 40	3,444 S.F. 0.079 AC.	3,304 S.F. 0.076 AC.
LOT 41	3,370 S.F. 0.077 AC.	3,460 S.F. 0.079 AC.
LOT 78	3,487 S.F. 0.080 AC.	3,556 S.F. 0.082 AC.
LOT 79	3,541 S.F. 0.081 AC.	3,373 S.F. 0.077 AC.
LOT 80	3,664 S.F. 0.084 AC.	3,749 S.F. 0.086 AC.
LOT 81	3,343 S.F. 0.077 AC.	3,487 S.F. 0.080 AC.
LOT 82	3,380 S.F. 0.078 AC.	3,296 S.F. 0.076 AC.
LOT 83	3,380 S.F. 0.078 AC.	3,296 S.F. 0.076 AC.
LOT 84	3,380 S.F. 0.078 AC.	3,296 S.F. 0.076 AC.
LOT 85	3,380 S.F. 0.078 AC.	3,296 S.F. 0.076 AC.
LOT 86	3,376 S.F. 0.078 AC.	3,526 S.F. 0.081 AC.



ADJUSTMENT TO UNDISTURBED
 NATURAL OPEN
 SPACE EASEMENT #1



4 Large/Small Plat(s) Recorded
 herewith as # 190015433

City of Williamsburg & County of James City
 Circuit Court: This PLAT was recorded on
 October 22, 2019
 at 8:41 AM PM, PB PG
 Document # 190015433
 MONA A. FOLEY, CLERK
 Mona A. Foley, Clerk