

190015433

SEE SHEET 1
FOR LOT & EASEMENT
LINE & CURVE TABLES

SEE SHEET 4
FOR LOT AREA TABLE

BOUNDARY LINE ADJUSTMENT PLAT
LOTS 22 THROUGH 33.
LOTS 36 THROUGH 41,
LOTS 78 THROUGH 86,
OPEN SPACE #1 &
PARCEL A FUTURE DEVELOPMENT
STONEHOUSE TRACT 3
PARCEL "A", SECTION 1

STONEHOUSE DISTRICT JAMES CITY COUNTY VIRGINIA

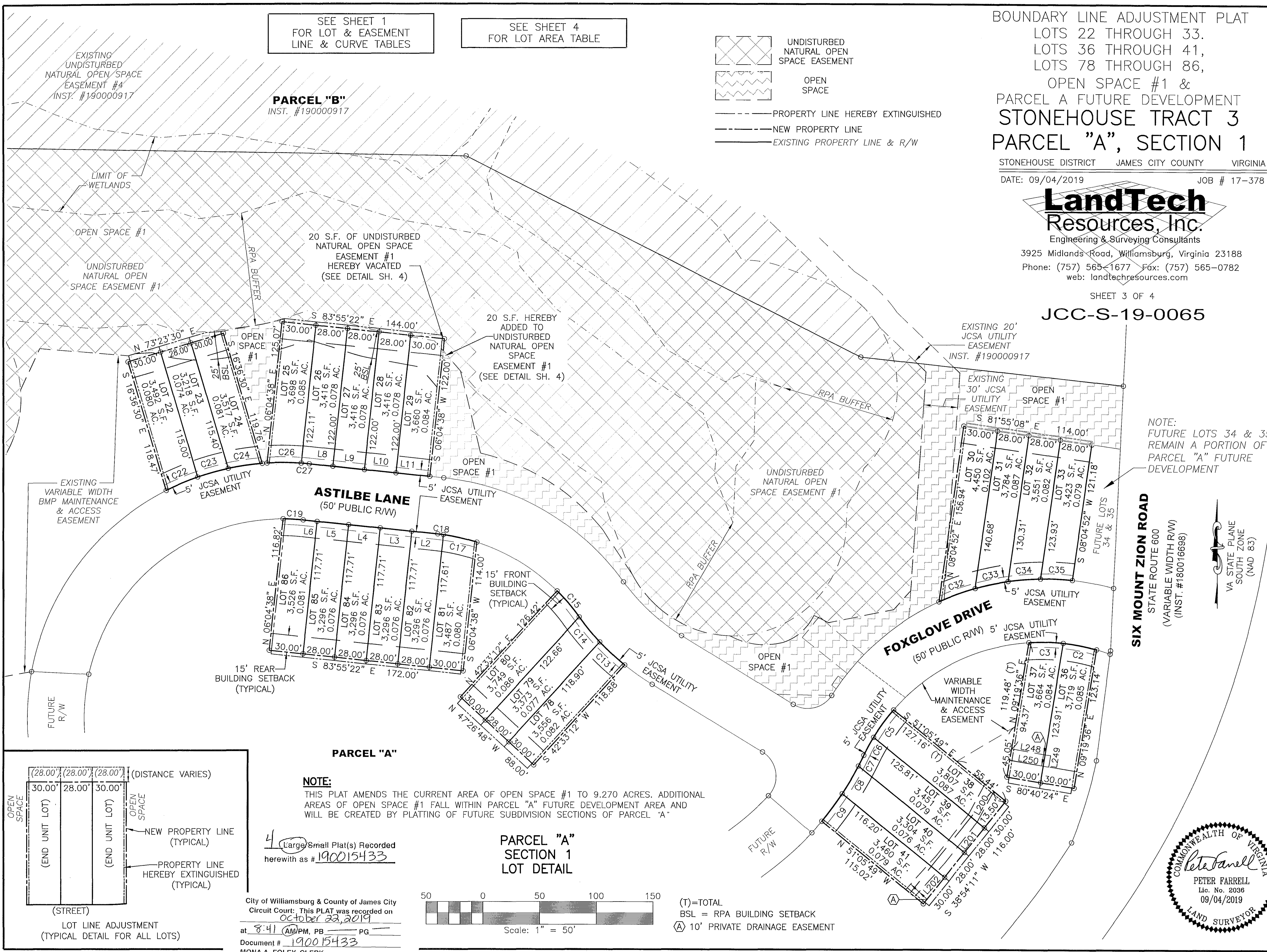
DATE: 09/04/2019 JOB # 17-378

LandTech
Resources, Inc.

Engineering & Surveying Consultants
3925 Midlands Road, Williamsburg, Virginia 23188
Phone: (757) 565-1677 Fax: (757) 565-0782
web: landtechresources.com

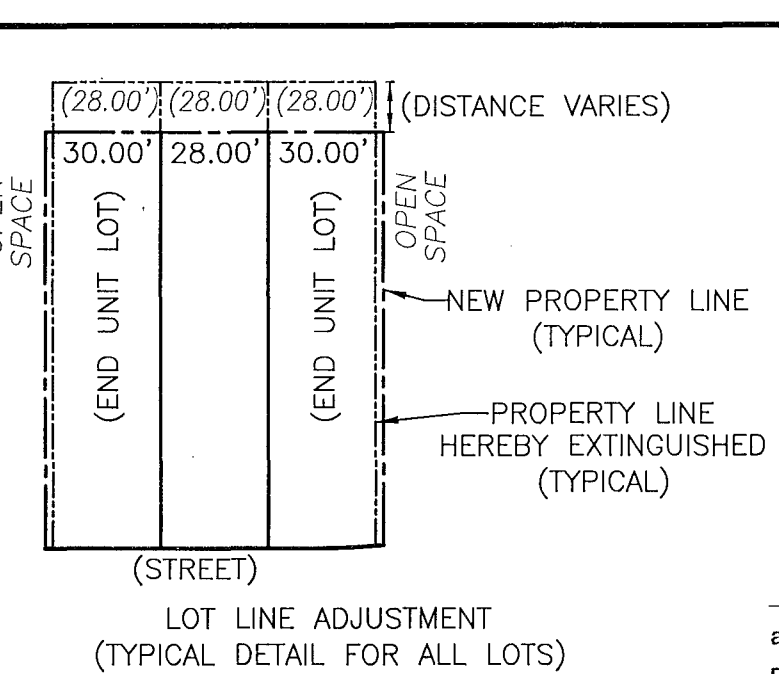
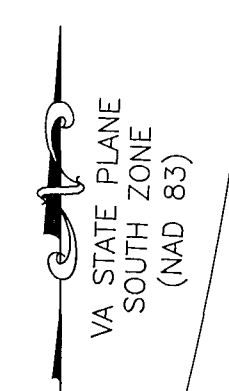
SHEET 3 OF 4

JCC-S-19-0065



NOTE:
FUTURE LOTS 34 & 35
REMAIN A PORTION OF
PARCEL "A" FUTURE
DEVELOPMENT

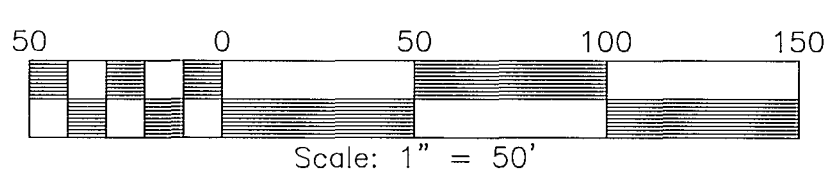
SIX MOUNT ZION ROAD
STATE ROUTE 600
(VARIABLE WIDTH R/W)
(INST. #180016698)



NOTE:
THIS PLAT AMENDS THE CURRENT AREA OF OPEN SPACE #1 TO 9.270 ACRES. ADDITIONAL AREAS OF OPEN SPACE #1 FALL WITHIN PARCEL "A" FUTURE DEVELOPMENT AREA AND WILL BE CREATED BY PLATTING OF FUTURE SUBDIVISION SECTIONS OF PARCEL "A"

4 Large Small Plat(s) Recorded
herewith as # 190015433

**PARCEL "A"
SECTION 1
LOT DETAIL**



(T)=TOTAL
BSL = RPA BUILDING SETBACK
(A) 10' PRIVATE DRAINAGE EASEMENT

City of Williamsburg & County of James City
Circuit Court: This PLAT was recorded on
October 22, 2019
at 8:41 AM PM, PB PG
Document # 190015433
MONA A. FOLEY, CLERK
Mona A. Foley, Clerk

