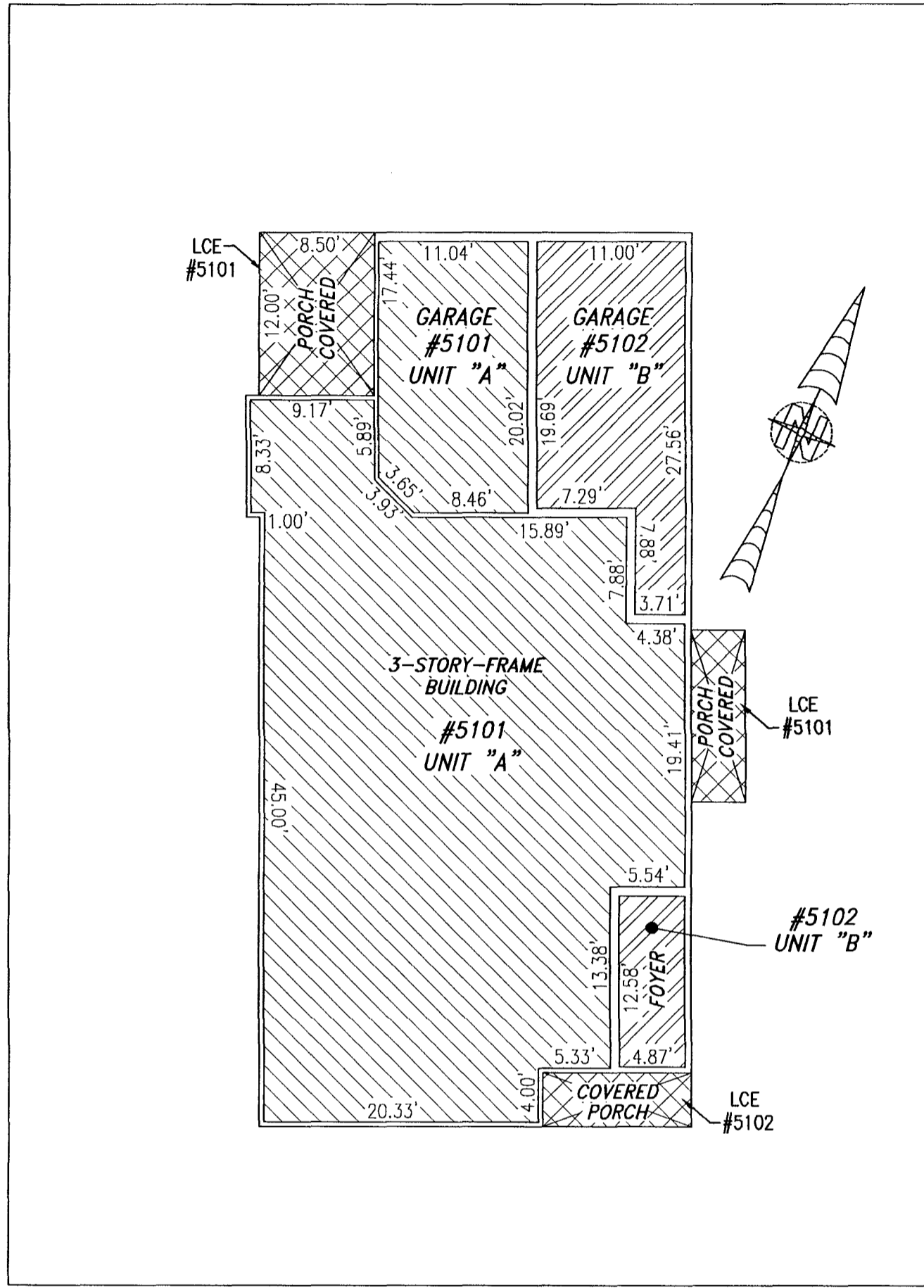
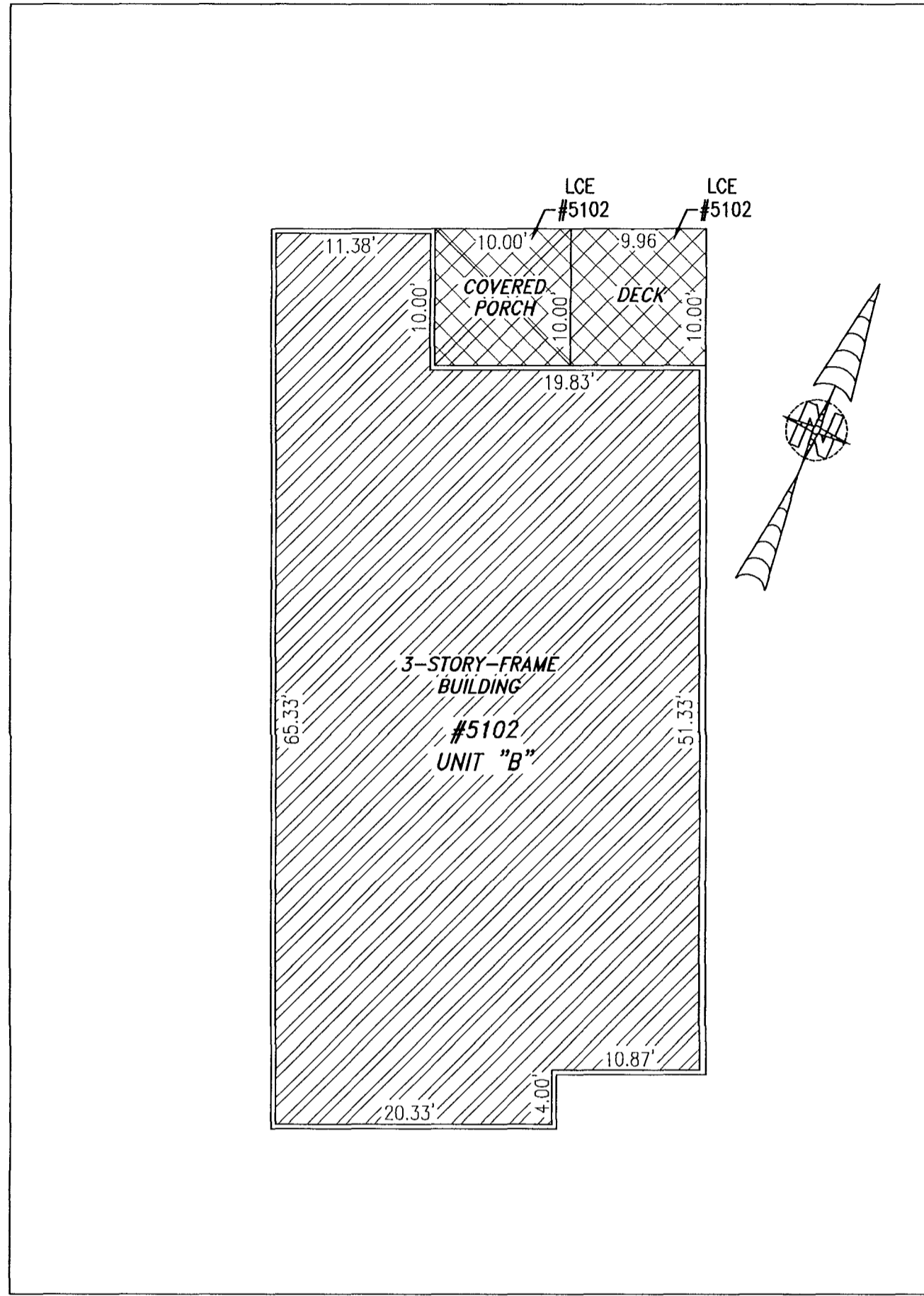


190014841

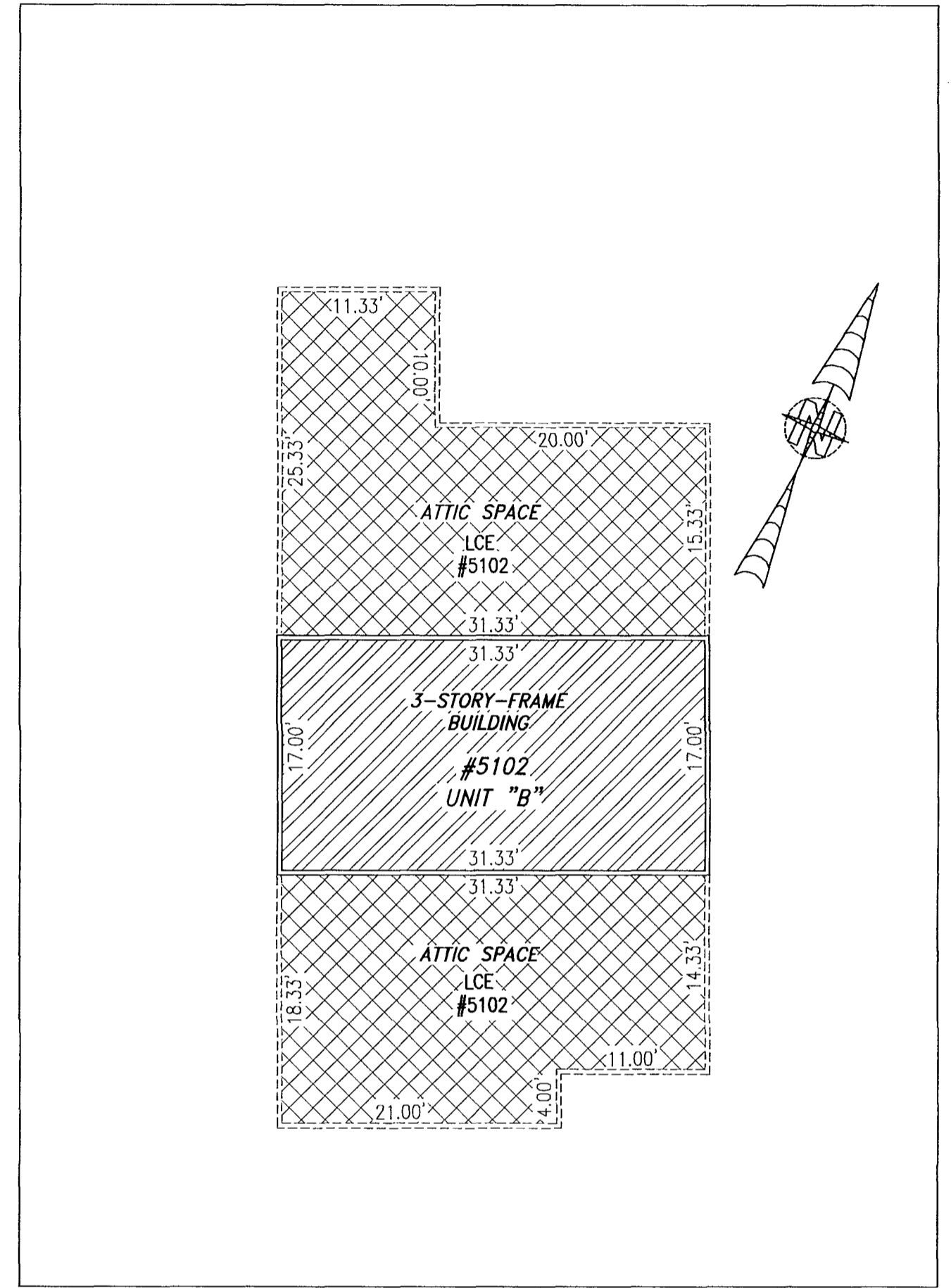
BUILDING 51 (DUPLEX)



FIRST FLOOR



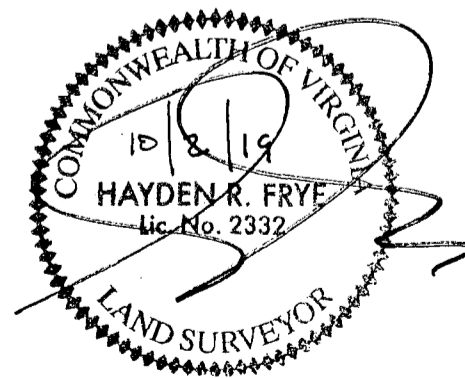
SECOND FLOOR



THIRD FLOOR

I HEREBY CERTIFY THAT THIS PLAN IS ACCURATE AND THAT IT COMPLIES WITH THE PROVISIONS OF THE CODE OF VIRGINIA OF 1950 AS AMENDED, § 55-79.58 AND I FURTHER CERTIFY THAT ALL UNITS THEREOF DEPICTED HEREON, PURSUANT TO THE CODE OF VIRGINIA § 55-79.58B, ARE SUBSTANTIALLY COMPLETE.

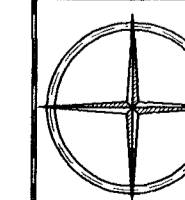
UNIT ID	UNIT DESCRIPTION	UNIT ADDRESS
A	-INDICATES AREA OF UNIT 5101	#5101 PROMENADE LANE
B	-INDICATES AREA OF UNIT 5102	#5102 PROMENADE LANE
	-INDICATES COMMON ELEMENT	
	-INDICATES LIMITED COMMON ELEMENT	



THIS SHEET: FLOOR PLANS

PHASE 51
 CONDOMINIUM PLAT AND PLAN
 OF
THE PROMENADE
 AT
JOHN TYLER
 A CONDOMINIUM
 JAMES CITY COUNTY, VIRGINIA

Job# 160921



Hayden Frye and Associates, Inc.

Land Surveyors

333 KELLAM ROAD, SUITE 200
 VIRGINIA BEACH, VA., 23462
 PH: (757) 491-7228 FX: (757) 491-7229

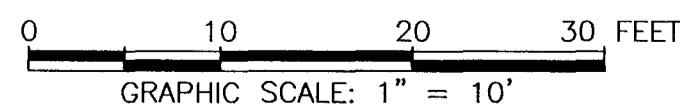
DATE: SEPTEMBER 27, 2019

SCALE: 1"=10'

SHEET 5 OF 5 THIS PHASE

5 Large/Small Plat(s) Recorded
 herewith as # 190014841

City of Williamsburg & County of James City
 Circuit Court: This PLAT was recorded on
 Oct 10, 2019
 at 10:44 AM PM, PG. ---
 Document # 190014841
 MONA A. FOLEY, CLERK
Mona A. Foley, Clerk



JCC Subdivision Agent *EB*
 Approval Not Required