

190012768

TAX PARCEL ID - 2020100028
 A SUBDIVISION OF
TAX PARCEL #: 2020100028
TIMBER CREEK ESTATES
LOTS 1 THROUGH 5
 JAMES CITY COUNTY STONEHOUSE DISTRICT VIRGINIA
 DATE: 02/25/2019 SCALE: 1"=100' JOB # 18-295

LandTech
Resources, Inc.
 Engineering & Surveying Consultants
 3925 Midlands Road, Williamsburg, Virginia 23188
 Phone: (757) 565-1677 Fax: (757) 565-0782
 web: landtechresources.com

SHEET 3 OF 3
JCC-S-18-0083

AREA TABULATION

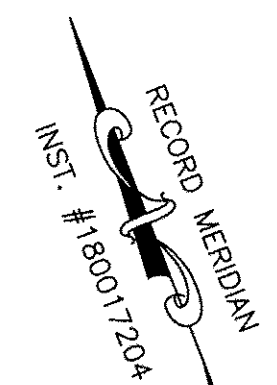
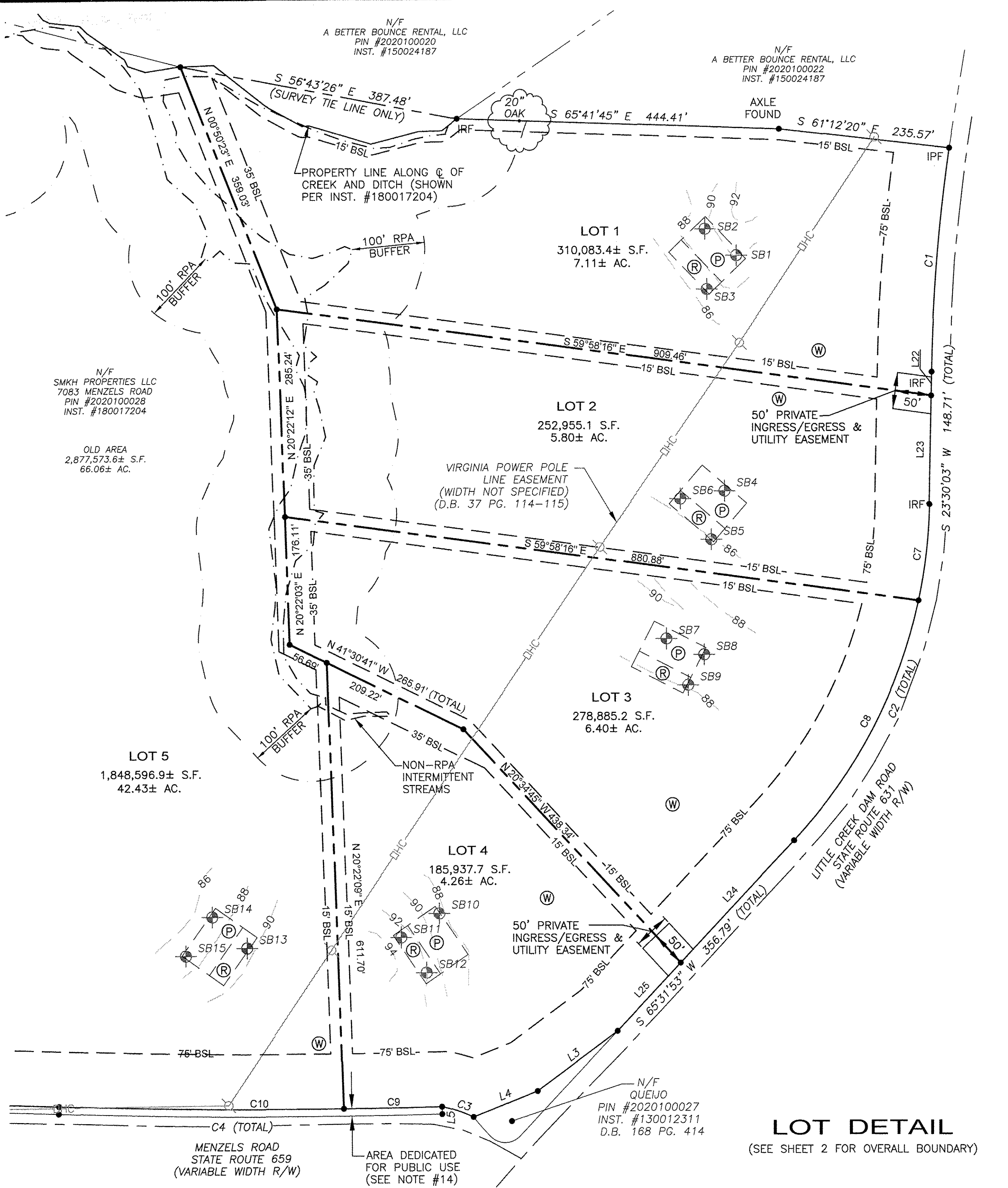
PARCEL	OLD AREA	NEW AREA
PIN #2020100028	2,877,573.6± S.F. / 66.06± AC.	1,847,903.9± S.F. / 42.42± AC.
R/W DEDICATION		11,687.2 S.F. / 0.27 AC.
LOT 1		310,083.4± S.F. / 7.11± AC.
LOT 2		252,955.1± S.F. / 5.80± AC.
LOT 3		278,885.2± S.F. / 6.40± AC.
LOT 4		185,937.7± S.F. / 4.26± AC.
LOT 5		1,848,596.9± S.F. / 42.43± AC.
TOTAL AREA = 2,877,573.6± S.F. / 66.06± AC.		

NEW LOT LINE TABLE

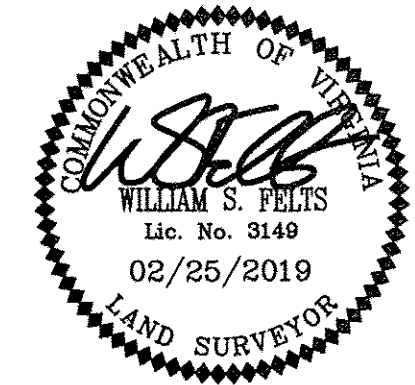
LINE	BEARING	DISTANCE
L22	N 23°30'03" E	32.64'
L23	N 23°30'03" E	148.71'
L24	S 65°31'53" W	229.47'
L25	N 65°31'53" E	127.32'
L26	N 70°12'27" W	87.42'

NEW LOT CURVE TABLE

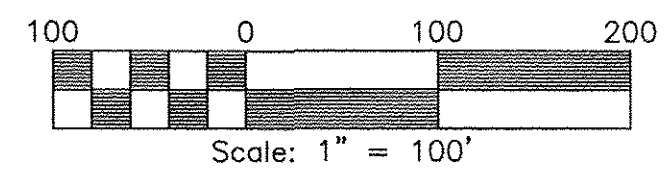
CURVE	ARC LENGTH	RADIUS	DELTA ANGLE	CHORD BEARING	CHORD LENGTH
C7	133.67'	695.00'	11°01'13"	S 29°00'39" W	133.47'
C8	376.16'	695.00'	31°00'38"	N 50°01'34" E	371.59'
C9	135.23'	8387.30'	0°55'26"	N 68°47'29" W	135.23'
C10	392.44'	8387.30'	2°40'51"	N 66°59'20" W	392.40'
C11	445.78'	5602.04'	4°33'34"	N 67°55'41" W	445.67'
C12	109.88'	566.82'	11°06'24"	S 75°45'39" E	109.70'



LOT DETAIL
 (SEE SHEET 2 FOR OVERALL BOUNDARY)



3 Large/Small Plat(s) Recorded
 herewith as # 190012768



City of Williamsburg & County of James City
 Circuit Court: This PLAT was recorded on
 Sept. 5, 2019
 at 3:26 AM/PM, PG
 Document # 190012768
 MONA A. FOLEY, CLERK
Monica Foley, Clerk