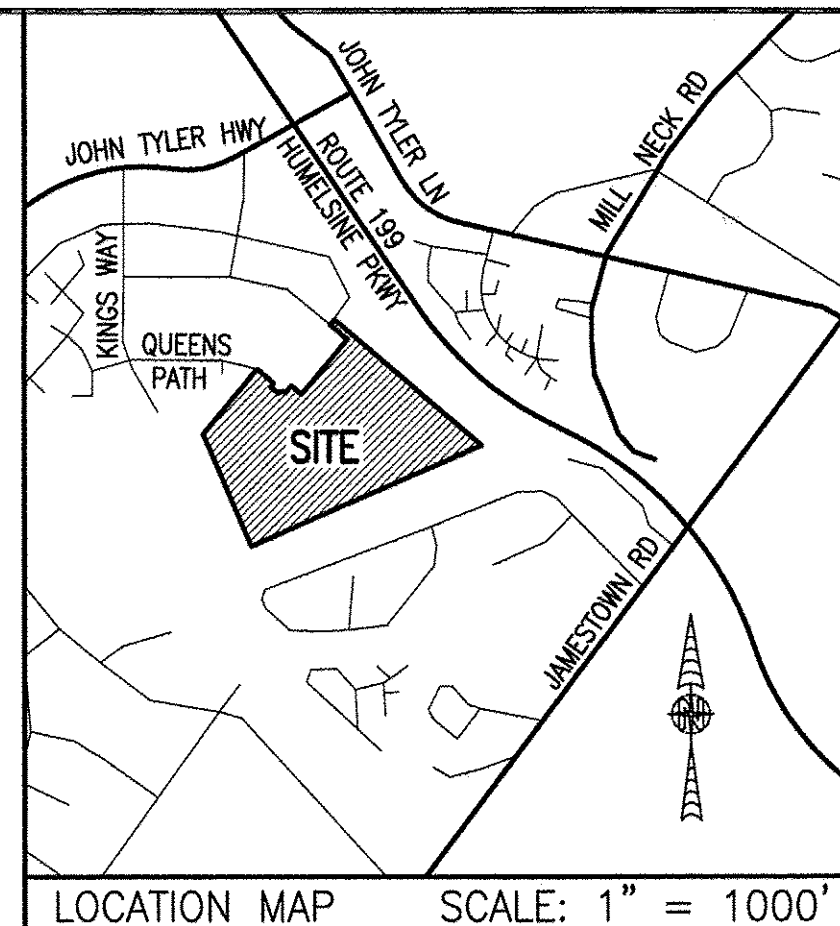
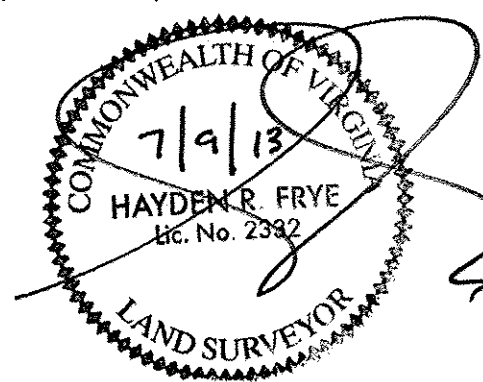


190011651

NOW OR FORMERLY  
WILLIAMSBURG RIVERSIDE  
MEDICAL COMPLEX, LLC  
GPIN: 4812200022  
(INST. #070031326)  
(P.B. 67, P. 37)

I HEREBY CERTIFY THAT THIS PLAT IS ACCURATE AND THAT IT COMPLIES WITH THE PROVISIONS OF THE CODE OF VIRGINIA OF 1950 AS AMENDED, § 55-79.58 AND I FURTHER CERTIFY THAT ALL IMPROVEMENTS THEREOF DEPICTED HEREON, PURSUANT TO THE CODE OF VIRGINIA § 55-79.58A, ARE SUBSTANTIALLY COMPLETE.



LEGAL DESCRIPTION

PROPERTY SHOWN HEREON BEING "NEW PARCEL 29" CONTAINING 18.747 ACRES AS SHOWN ON "PLAT OF LOT LINE EXTINGUISHMENT BEING PARCELS 20 AND 29 OF WILLIAMSBURG CROSSING" PREPARED BY AES CONSULTING ENGINEERS, DATED 10-24-16 AND RECORDED AS INSTRUMENT NO. 160021147.

NOTES:

- PHASE 55 SUBMITTED LAND AS SHOWN HEREON CONTAINS THE GARDEN PARK AREA ONLY. NO BUILDINGS ARE INCLUDED IN THIS PHASE.
- EASEMENTS AND BUILDING LINES SHOWN HEREON PER THE FOLLOWING:
  - ALTA SURVEY BY AES CONSULTING ENGINEERS, DATED 3-23-15
  - PLAT BY AES CONSULTING ENGINEERS, DATED 10-24-16, INST. #160021147
  - PLAN OF DEVELOPMENT BY AES CONSULTING ENGINEERS, DATED 9-8-16

2 Large Small Plat(s) Recorded herewith as # 190011651

City of Williamsburg & County of James City Circuit Court: This PLAT was recorded on Aug. 13, 2019

at 2:38 AM PM, PG

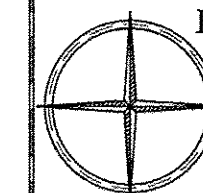
Document # 190011651  
MONA A. FOLEY, CLERK

JCC Subdivision Agent Approval Not Required EGC

THIS SHEET: OVERALL SITE LAYOUT AND AREAS

**PHASE 55**  
**CONDOMINIUM PLAT AND PLAN**  
OF  
**THE PROMENADE**  
AT  
**JOHN TYLER**  
A CONDOMINIUM  
JAMES CITY COUNTY, VIRGINIA

Jo# 160921



Hayden Frye and Associates, Inc.

Land Surveyors

333 KELLAM ROAD, SUITE 200  
VIRGINIA BEACH, VA., 23462  
PH: (757) 491-7228 FX: (757) 491-7229

DATE: JUNE 24, 2019

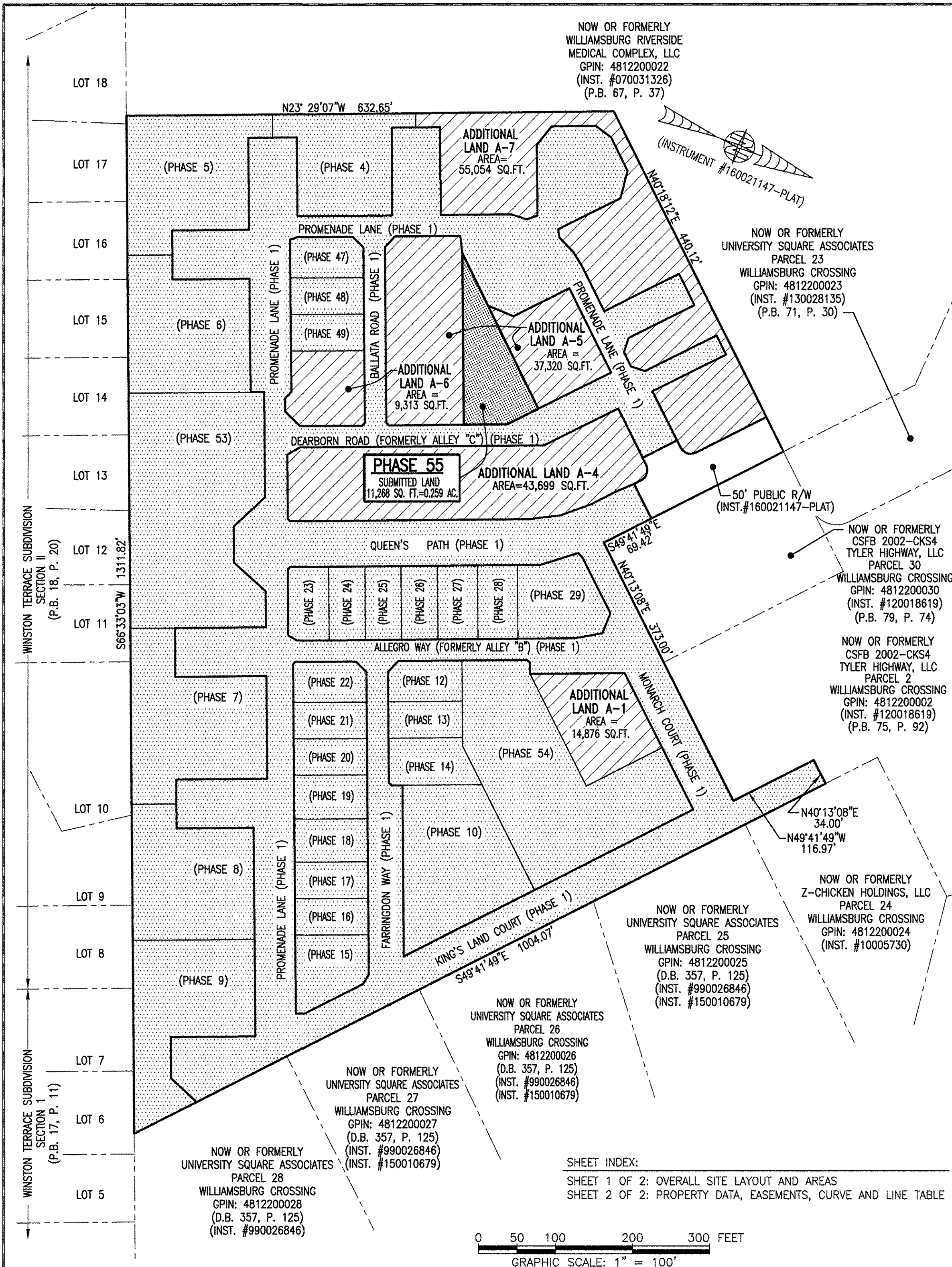
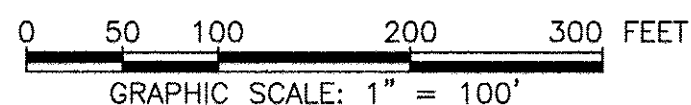
SCALE: 1"=100'

SHEET 1 OF 2 THIS PHASE

AREA TABLE				
PHASE	BLDG#	STATUS/RECORDATION	SQUARE FEET	ACRES
1	N/A	INSTR.#170011679	268,468	6.163
4	4	INSTR.#190007409	17,652	0.405
5	5	INSTR.#190001499	26,166	0.601
6	6	INSTR.#180018358	24,875	0.571
7	7	INSTR.#180014663	28,822	0.662
8	8	INSTR.#180010369	24,539	0.563
9	9	INSTR.#180003694	25,978	0.596
10	10	INSTR.#170023466	25,806	0.592
12	12	INSTR.#180016847	4,949	0.114
13	13	INSTR.#180010007	4,512	0.104
14	14	INSTR.#180009579	6,462	0.148
15	15	INSTR.#190001143	7,841	0.180
16	16	INSTR.#190001141	4,467	0.103
17	17	INSTR.#190001140	4,467	0.103
18	18	INSTR.#180019704	5,273	0.121
19	19	INSTR.#180019705	5,367	0.123
20	20	INSTR.#180016210	4,465	0.103
21	21	INSTR.#180016209	4,465	0.103
22	22	INSTR.#180016208	4,892	0.112
23	23	INSTR.#180001768	5,014	0.115
24	24	INSTR.#180005480	4,464	0.102
25	25	INSTR.#180001779	4,466	0.103
26	26	INSTR.#170021156	4,465	0.102
27	27	INSTR.#170021157	4,944	0.114
28	28	INSTR.#180001781	4,936	0.113
29	29	NOT YET RECORDED	10,569	0.243
47	47	NOT YET RECORDED	4,879	0.112
48	48	NOT YET RECORDED	4,465	0.103
49	49	NOT YET RECORDED	4,465	0.102
53	N/A	INSTR.#180014662	49,886	1.145
54	N/A	INSTR.#190007408	43,080	0.989
55	N/A	SUBSTANTIALLY COMPLETE	11,268	0.259
ADDITIONAL LAND A-1			14,876	0.341
ADDITIONAL LAND A-4			43,699	1.003
ADDITIONAL LAND A-5			37,320	0.856
ADDITIONAL LAND A-6			9,313	0.214
ADDITIONAL LAND A-7			55,054	1.264
TOTAL: NEW PARCEL 29			816,629	18.747

- INDICATES SUBMITTED LAND
- INDICATES PREVIOUSLY SUBMITTED LAND
- INDICATES ADDITIONAL LAND

SHEET INDEX:  
SHEET 1 OF 2: OVERALL SITE LAYOUT AND AREAS  
SHEET 2 OF 2: PROPERTY DATA, EASEMENTS, CURVE AND LINE TABLE



NOW OR FORMERLY  
UNIVERSITY SQUARE ASSOCIATES  
PARCEL 28  
WILLIAMSBURG CROSSING  
GPIN: 4812200028  
(D.B. 357, P. 125)  
(INST. #990026846)

NOW OR FORMERLY  
UNIVERSITY SQUARE ASSOCIATES  
PARCEL 27  
WILLIAMSBURG CROSSING  
GPIN: 4812200027  
(D.B. 357, P. 125)  
(INST. #990026846)

NOW OR FORMERLY  
UNIVERSITY SQUARE ASSOCIATES  
PARCEL 26  
WILLIAMSBURG CROSSING  
GPIN: 4812200026  
(D.B. 357, P. 125)  
(INST. #990026846)

NOW OR FORMERLY  
UNIVERSITY SQUARE ASSOCIATES  
PARCEL 25  
WILLIAMSBURG CROSSING  
GPIN: 4812200025  
(D.B. 357, P. 125)  
(INST. #990026846)

NOW OR FORMERLY  
Z-CHICKEN HOLDINGS, LLC  
PARCEL 24  
WILLIAMSBURG CROSSING  
GPIN: 4812200024  
(INST. #10005730)

NOW OR FORMERLY  
CSFB 2002-CKS4  
TYLER HIGHWAY, LLC  
PARCEL 2  
WILLIAMSBURG CROSSING  
GPIN: 4812200002  
(INST. #120018619)  
(P.B. 75, P. 92)

NOW OR FORMERLY  
CSFB 2002-CKS4  
TYLER HIGHWAY, LLC  
PARCEL 30  
WILLIAMSBURG CROSSING  
GPIN: 4812200030  
(INST. #120018619)  
(P.B. 79, P. 74)

NOW OR FORMERLY  
UNIVERSITY SQUARE ASSOCIATES  
PARCEL 23  
WILLIAMSBURG CROSSING  
GPIN: 4812200023  
(INST. #130028135)  
(P.B. 71, P. 30)