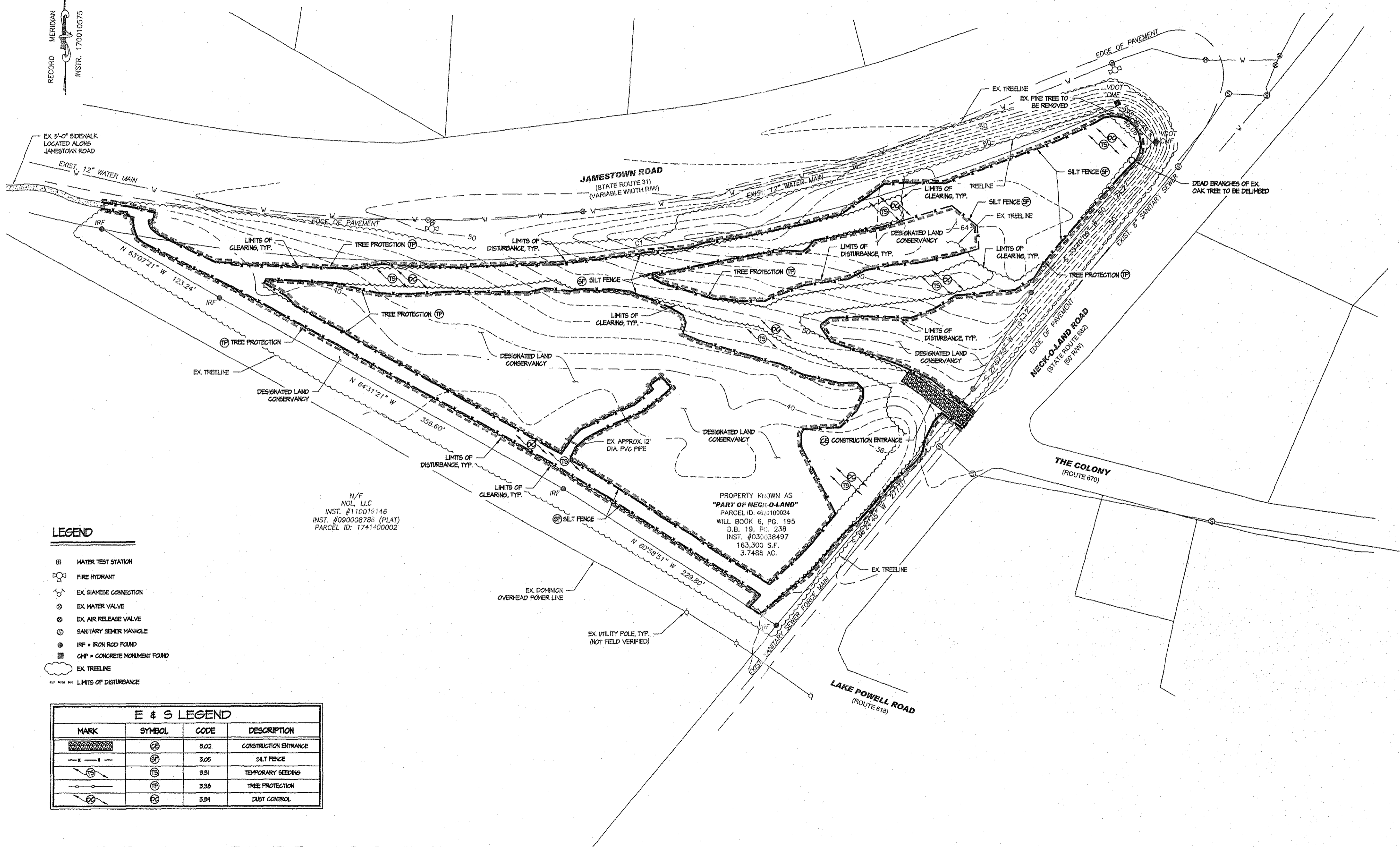


190010655

TEMPORARY STABILIZATION

TEMPORARY SEEDING SHALL BE REQUIRED WHENEVER A DISTURBED AREA WILL BE BROUGHT TO FINAL GRADE 14 OR MORE DAYS AWAY FROM WHEN DISTURBED.

RECORD MERIDIAN
INSTR. 170010575



LEGEND

- ⊕ WATER TEST STATION
- ⊕ FIRE HYDRANT
- ⊕ EX SIAMISE CONNECTION
- ⊕ EX WATER VALVE
- ⊕ EX AIR RELEASE VALVE
- ⊕ SANITARY SEWER MANHOLE
- ⊕ IRF = IRON ROD FOUND
- ⊕ CMF = CONCRETE MONUMENT FOUND
- ⊕ EX TREELINE
- LIMITS OF DISTURBANCE

E & S LEGEND			
MARK	SYMBOL	CODE	DESCRIPTION
⊕	⊕	5.02	CONSTRUCTION ENTRANCE
---	---	5.05	SILT FENCE
⊕	⊕	5.51	TEMPORARY SEEDING
⊕	⊕	3.36	TREE PROTECTION
⊕	⊕	5.54	DUST CONTROL

PHASE I EROSION & SEDIMENT CONTROL PLAN

SCALE: 1" = 40'-0"

Project #: VA0164DES
 Drawn by: JMK
 Reviewed by: MAM
 Date: 6/17/19
 THIS PLAN HAS NOT RECEIVED FINAL APPROVAL AND IS NOT APPROVED FOR CONSTRUCTION
 No. Revisions
 VIRGINIA
 JAMES CITY COUNTY
 SHEET 4 of 9
 C4
 PHASE I EROSION & SEDIMENT CONTROL PLAN
SITE PLAN OF
IMO JIMA MEMORIAL PARK
1620 JAMESTOWN ROAD
 The Structures Group, Inc.
 1200 Old Colony Lane • Williamsburg, VA 23185
 (757)220-0465 • Fax: (757)220-1546
 www.thestructuresgroup.com

City of Williamsburg & County of James City
 Circuit Court: This PLAT was recorded on
 July 25, 2019

at 9:57 AM PM, PB PG

Document # 190010655

MONA A. FOLEY, CLERK

Mona A. Foley, Clerk

9 Large/Small Plat(s) Recorded
 herewith as # 190010655