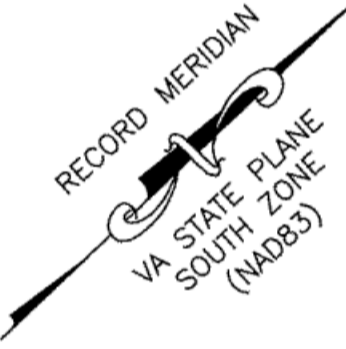
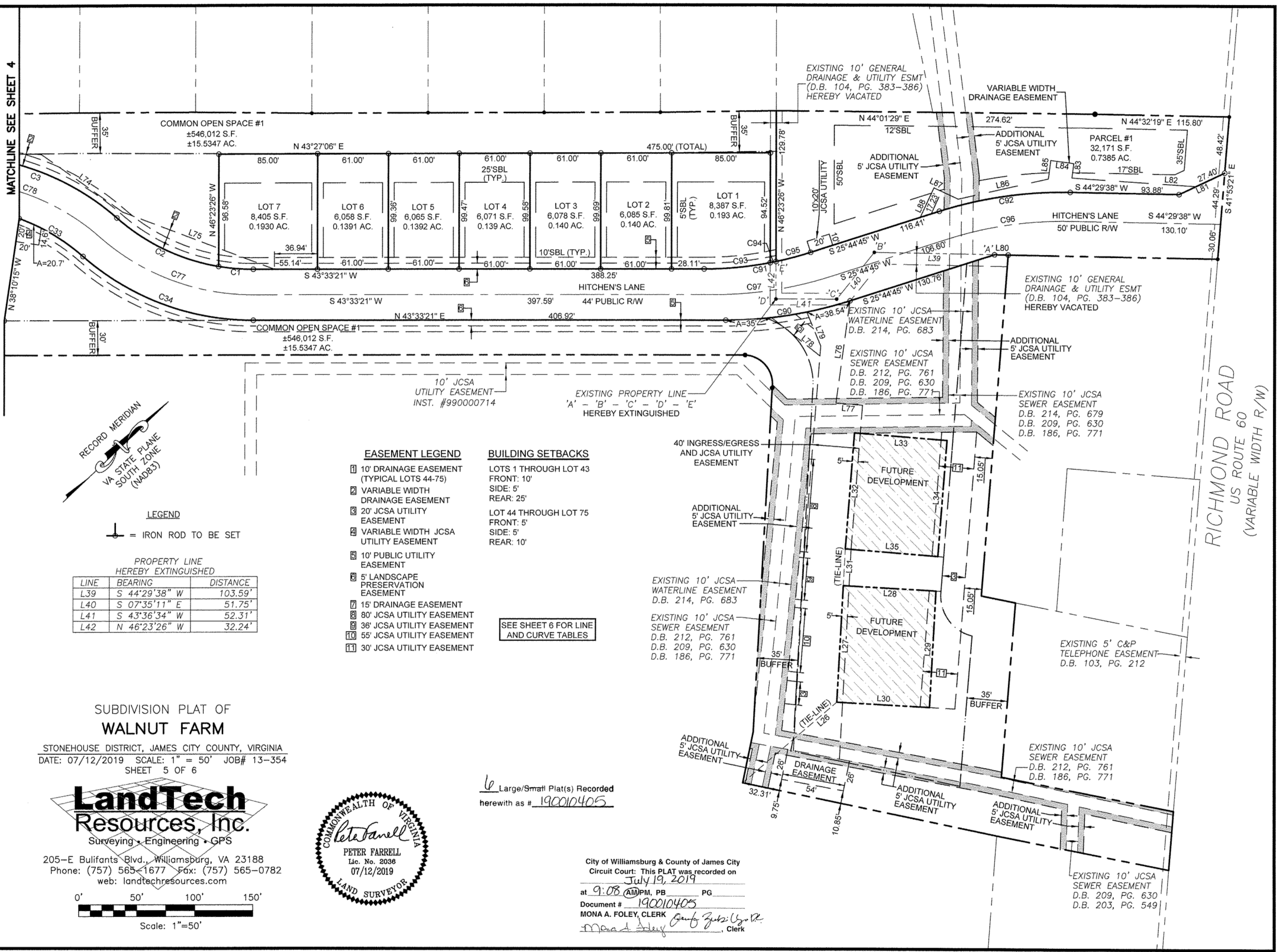


190010405

MATCHLINE SEE SHEET 4



LEGEND
= IRON ROD TO BE SET

PROPERTY LINE
HEREBY EXTINGUISHED

LINE	BEARING	DISTANCE
L39	S 44°29'38" W	103.59'
L40	S 07°35'11" E	51.75'
L41	S 43°36'34" W	52.31'
L42	N 46°23'26" W	32.24'

- EASEMENT LEGEND**
- 1 10' DRAINAGE EASEMENT (TYPICAL LOTS 44-75)
 - 2 VARIABLE WIDTH DRAINAGE EASEMENT
 - 3 20' JCSA UTILITY EASEMENT
 - 4 VARIABLE WIDTH JCSA UTILITY EASEMENT
 - 5 10' PUBLIC UTILITY EASEMENT
 - 6 5' LANDSCAPE PRESERVATION EASEMENT
 - 7 15' DRAINAGE EASEMENT
 - 8 80' JCSA UTILITY EASEMENT
 - 9 36' JCSA UTILITY EASEMENT
 - 10 55' JCSA UTILITY EASEMENT
 - 11 30' JCSA UTILITY EASEMENT
- BUILDING SETBACKS**
- LOTS 1 THROUGH LOT 43
FRONT: 10'
SIDE: 5'
REAR: 25'
 - LOT 44 THROUGH LOT 75
FRONT: 5'
SIDE: 5'
REAR: 10'

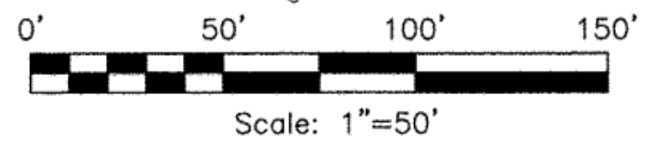
SEE SHEET 6 FOR LINE AND CURVE TABLES

SUBDIVISION PLAT OF WALNUT FARM

STONEHOUSE DISTRICT, JAMES CITY COUNTY, VIRGINIA
DATE: 07/12/2019 SCALE: 1" = 50' JOB# 13-354
SHEET 5 OF 6



205-E Bulifants Blvd., Williamsburg, VA 23188
Phone: (757) 565-1677 Fax: (757) 565-0782
web: landtechresources.com



Large/Small Plat(s) Recorded
herewith as # 190010405

City of Williamsburg & County of James City
Circuit Court: This PLAT was recorded on
July 19, 2019
at 9:08 AM PM, PB PG
Document # 190010405
MONA A. FOLEY, CLERK
Mona A. Foley Clerk

RICHMOND ROAD
US ROUTE 60
(VARIABLE WIDTH R/W)