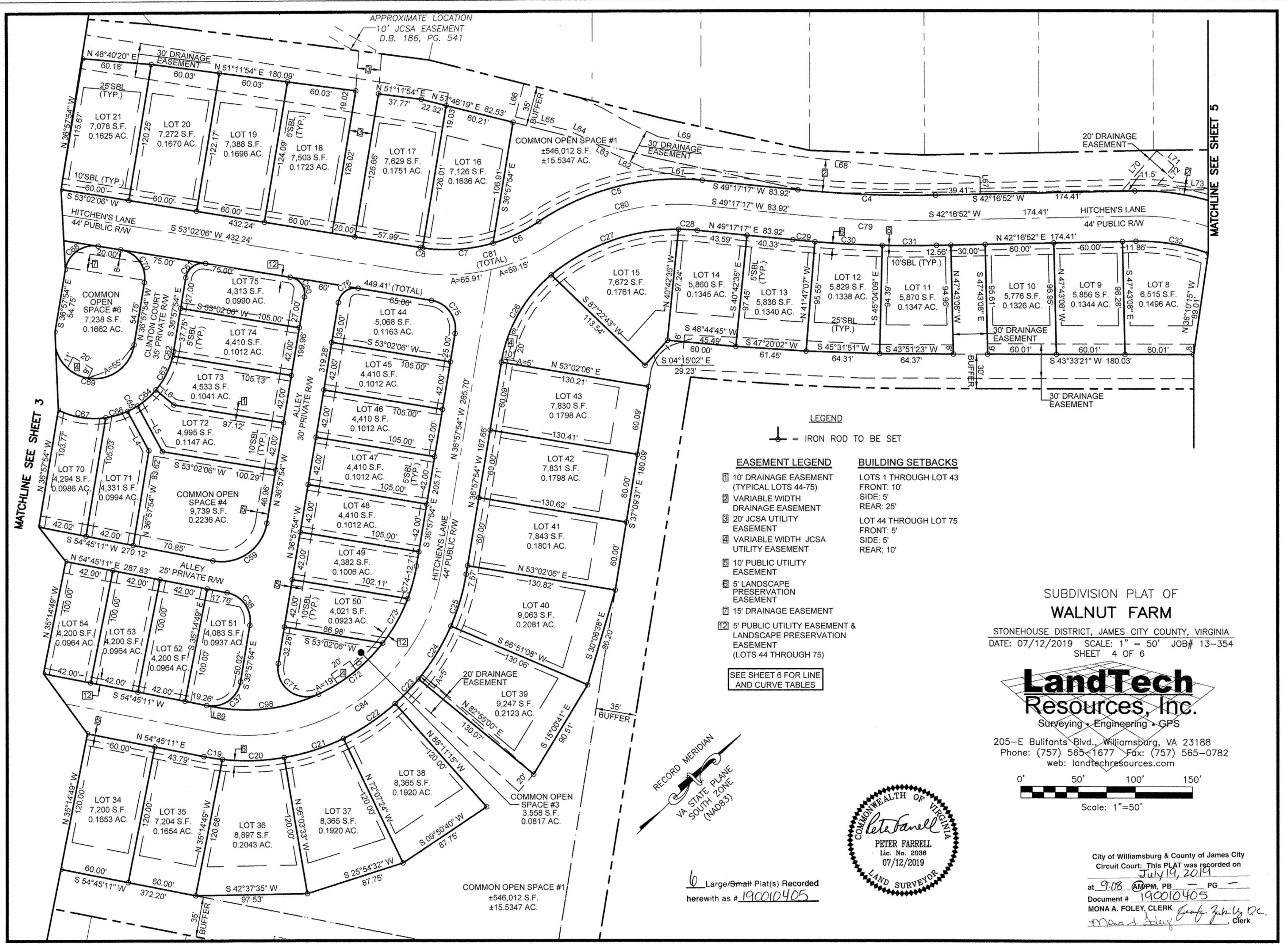


190010405



MATCHLINE SEE SHEET 3

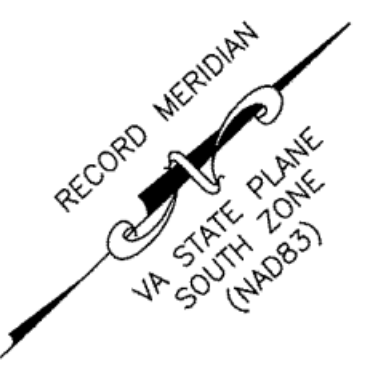
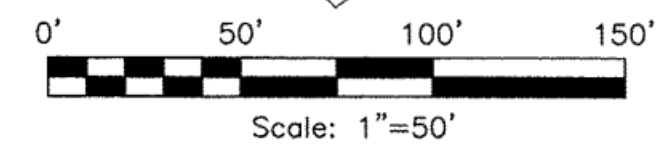
MATCHLINE SEE SHEET 5

- LEGEND**
- ⊙ = IRON ROD TO BE SET
- | | |
|---|--|
| EASEMENT LEGEND | BUILDING SETBACKS |
| ① 10' DRAINAGE EASEMENT (TYPICAL LOTS 44-75) | LOTS 1 THROUGH LOT 43
FRONT: 10'
SIDE: 5'
REAR: 25' |
| ② VARIABLE WIDTH DRAINAGE EASEMENT | |
| ③ 20' JCSA UTILITY EASEMENT | LOT 44 THROUGH LOT 75
FRONT: 5'
SIDE: 5'
REAR: 10' |
| ④ VARIABLE WIDTH JCSA UTILITY EASEMENT | |
| ⑤ 10' PUBLIC UTILITY EASEMENT | |
| ⑥ 5' LANDSCAPE PRESERVATION EASEMENT | |
| ⑦ 15' DRAINAGE EASEMENT | |
| ⑧ 5' PUBLIC UTILITY EASEMENT & LANDSCAPE PRESERVATION EASEMENT (LOTS 44 THROUGH 75) | |
- SEE SHEET 6 FOR LINE AND CURVE TABLES

SUBDIVISION PLAT OF
WALNUT FARM
 STONEHOUSE DISTRICT, JAMES CITY COUNTY, VIRGINIA
 DATE: 07/12/2019 SCALE: 1" = 50' JOB# 13-354
 SHEET 4 OF 6



205-E Bulifants Blvd., Williamsburg, VA 23188
 Phone: (757) 565-1677 Fax: (757) 565-0782
 web: landtechresources.com



6 Large/Small Plat(s) Recorded
 herewith as # 190010405

City of Williamsburg & County of James City
 Circuit Court: This PLAT was recorded on
 July 19, 2019
 at 9:08 AM PM, PG -
 Document # 190010405
 MONA A. FOLEY, CLERK
Mona A. Foley Clerk