

190010405

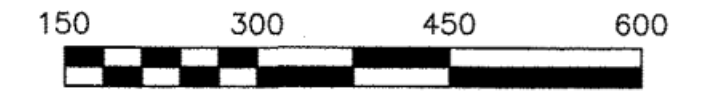
SUBDIVISION PLAT OF  
WALNUT FARM

STONEHOUSE DISTRICT, JAMES CITY COUNTY, VIRGINIA  
DATE: 07/12/2019 SCALE: 1" = 150' JOB# 13-354  
SHEET 2 OF 6

**LandTech**  
Resources, Inc.

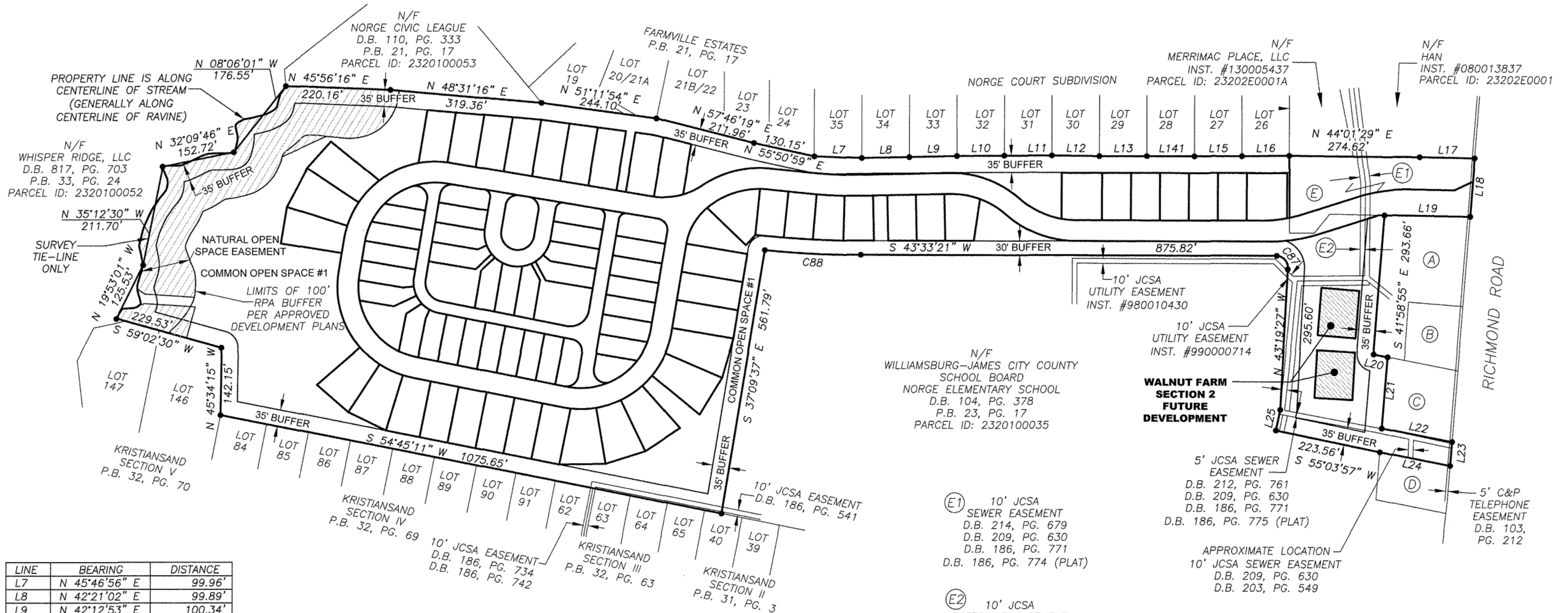
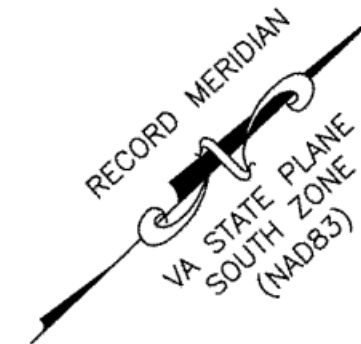
Surveying • Engineering • GPS

3925 Midlands Road, Williamsburg, VA 23188  
Phone: (757) 565-1677 Fax: (757) 565-0782  
web: landtechresources.com



Scale: 1"=150'

- (A) N/F HUGHES  
INST. #090003891  
PARCEL ID: 2320100031
- (B) N/F HAMILTON  
W.B. 13, PG. 358  
PARCEL ID: 2320100032
- (C) N/F SPEEGLE  
INST. #040002027  
PARCEL ID: 2320100033
- (D) N/F MILLER  
D.B. 74, PG. 548  
PARCEL ID: 2320100034
- (E) PROPERTY OF RICHMOND NORGE, LLC  
INST. #090034221  
PARCEL ID: 2320100030



**OVERALL BOUNDARY**

LINE	BEARING	DISTANCE
L7	N 45°46'56" E	99.96'
L8	N 42°21'02" E	99.89'
L9	N 42°12'53" E	100.34'
L10	N 42°59'06" E	99.79'
L11	N 43°23'34" E	100.01'
L12	N 44°10'36" E	100.03'
L13	N 43°21'36" E	100.07'
L14	N 43°29'53" E	100.08'
L15	N 43°27'10" E	100.15'
L16	N 42°46'03" E	99.78'
L17	N 44°32'19" E	115.80'
L18	S 41°53'21" E	122.77'
L19	S 44°29'38" W	180.68'
L20	N 54°28'44" E	29.96'
L21	S 41°51'20" E	149.91'
L22	N 54°28'44" E	151.09'
L23	S 41°53'21" E	50.33'
L24	S 54°28'44" W	150.93'
L25	N 34°44'33" W	44.35'

CURVE	RADIUS	ARC LENGTH	CHORD LENGTH	CHORD BEARING
C87	25.00'	41.31'	36.76'	N 86°06'08" W 94°39'53"
C88	2028.36'	202.23'	202.15'	N 46°24'43" E 5°42'45"

(E1) 10' JCSA SEWER EASEMENT  
D.B. 214, PG. 679  
D.B. 209, PG. 630  
D.B. 186, PG. 771  
D.B. 186, PG. 774 (PLAT)

(E2) 10' JCSA WATERLINE EASEMENT  
D.B. 214, PG. 683

5' JCSA SEWER EASEMENT  
D.B. 212, PG. 761  
D.B. 209, PG. 630  
D.B. 186, PG. 771  
D.B. 186, PG. 775 (PLAT)

APPROXIMATE LOCATION  
10' JCSA SEWER EASEMENT  
D.B. 209, PG. 630  
D.B. 203, PG. 549

Large/Small Plat(s) Recorded  
herewith as # 190010405



City of Williamsburg & County of James City  
Circuit Court: This PLAT was recorded on  
July 19, 2019  
at 9:08 AM, PB - PG -  
Document # 190010405  
MONA A. FOLEY, CLERK  
Mona A. Foley, Clerk