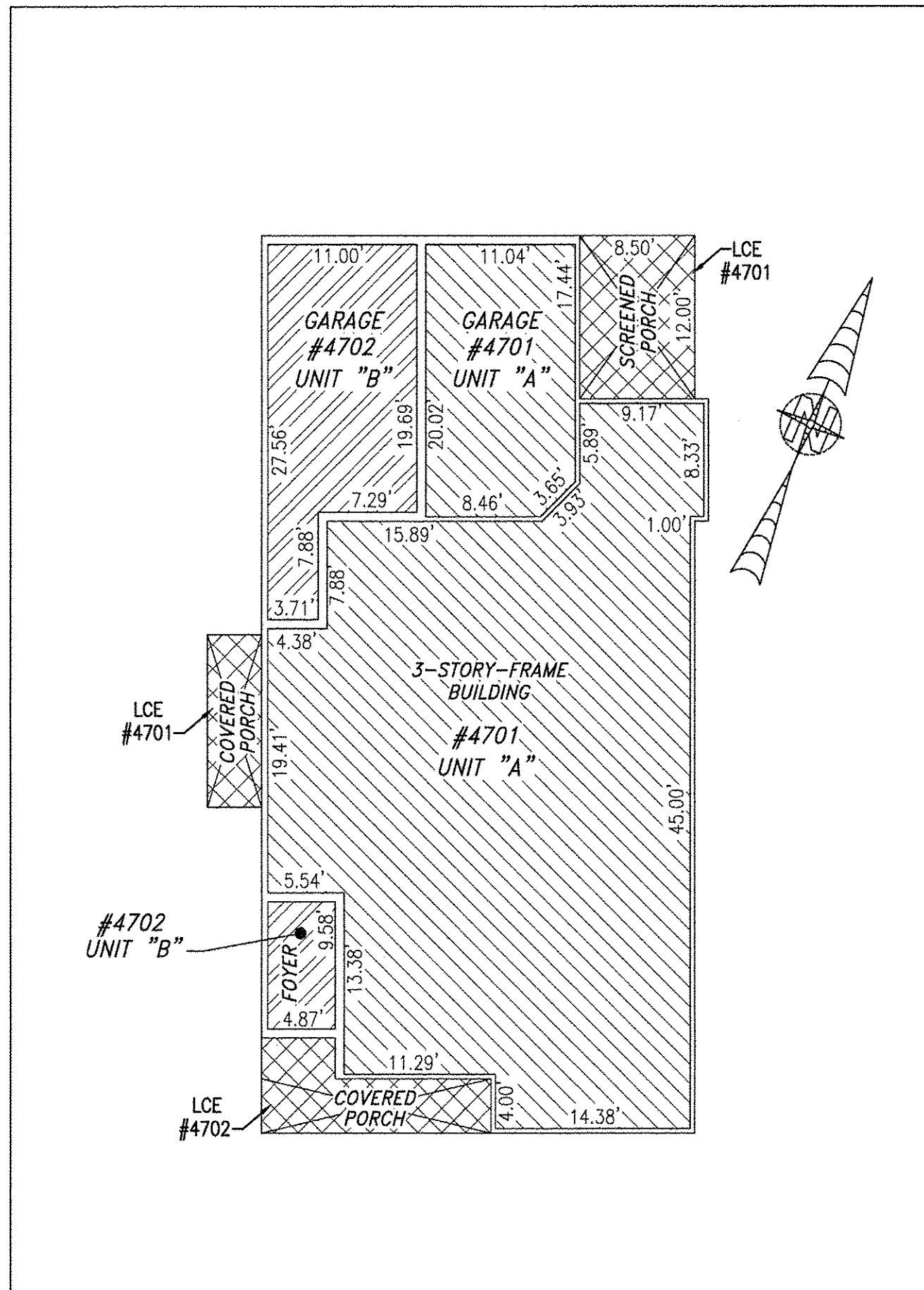
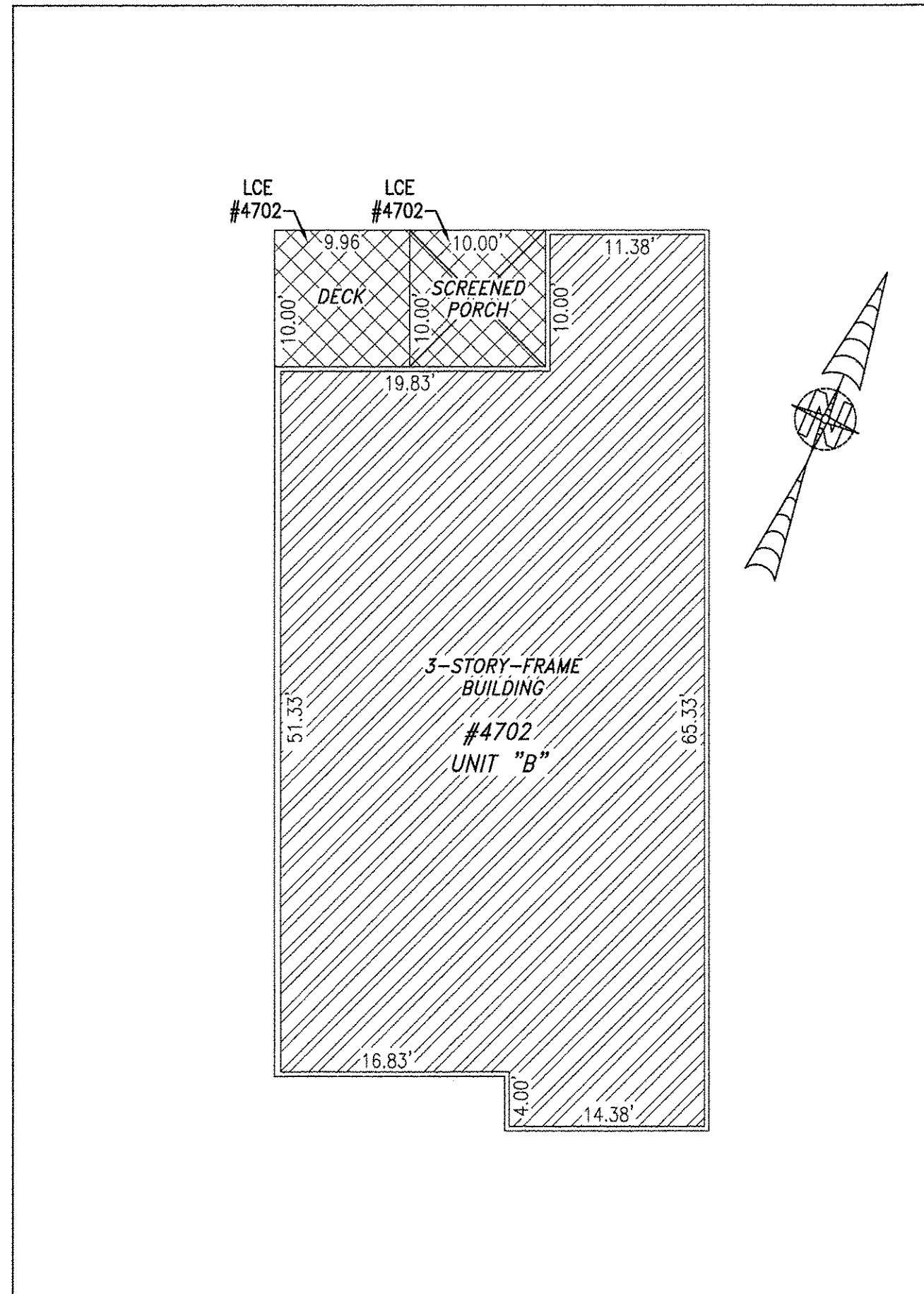


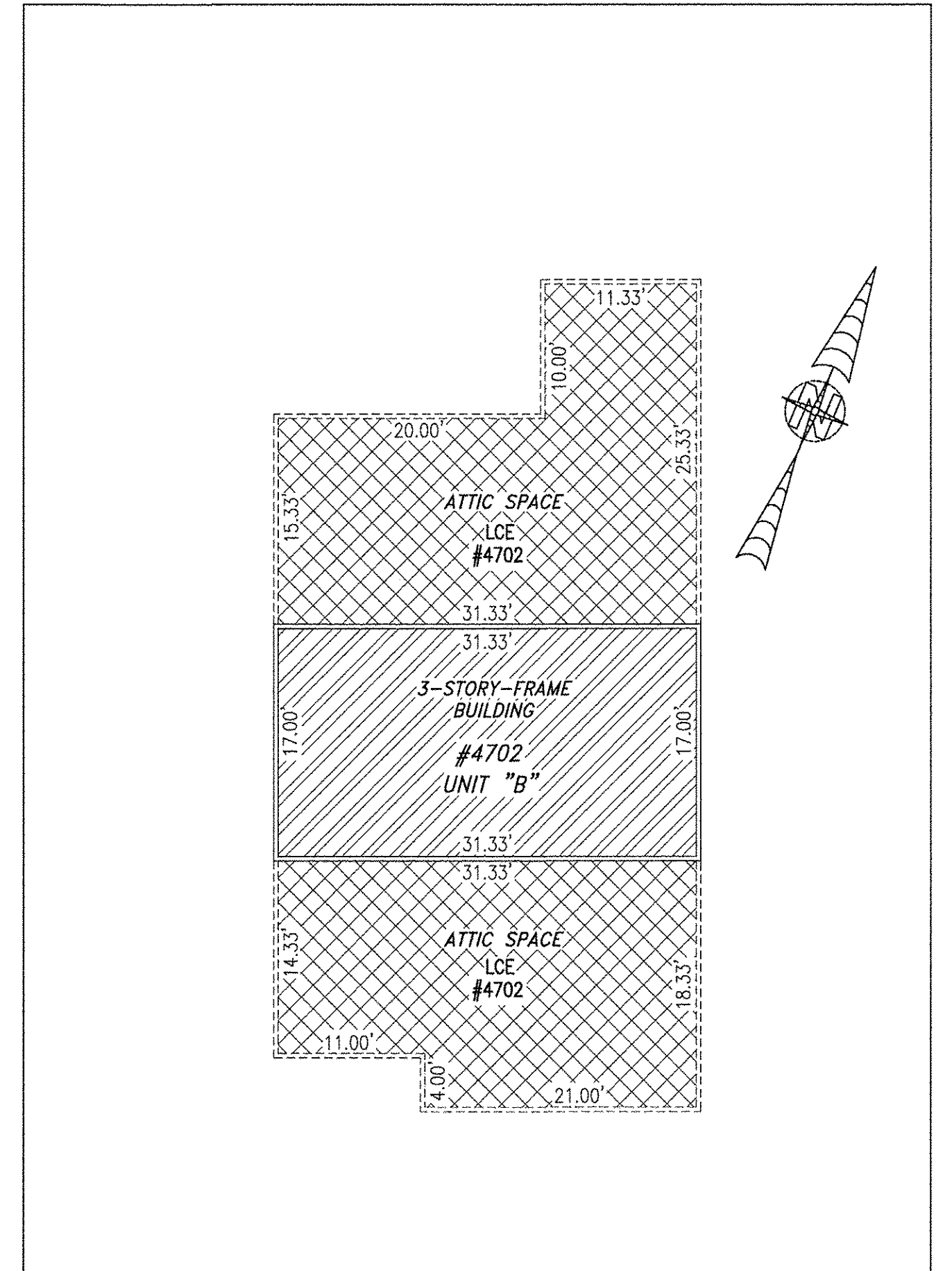
BUILDING 47 (DUPLEX)



FIRST FLOOR



SECOND FLOOR



THIRD FLOOR

UNIT ID	UNIT DESCRIPTION	UNIT ADDRESS
A	-INDICATES AREA OF UNIT 4701	#4701 PROMENADE LANE
B	-INDICATES AREA OF UNIT 4702	#4702 PROMENADE LANE
	-INDICATES COMMON ELEMENT	
	-INDICATES LIMITED COMMON ELEMENT	

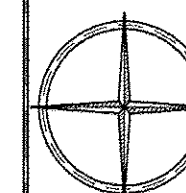
I HEREBY CERTIFY THAT THIS PLAN IS ACCURATE AND THAT IT COMPLIES WITH THE PROVISIONS OF THE CODE OF VIRGINIA OF 1950 AS AMENDED, § 55-79.58 AND I FURTHER CERTIFY THAT ALL UNITS THEREOF DEPICTED HEREON, PURSUANT TO THE CODE OF VIRGINIA § 55-79.58B, ARE SUBSTANTIALLY COMPLETE.



THIS SHEET: FLOOR PLANS

PHASE 47
CONDOMINIUM PLAT AND PLAN
 OF
THE PROMENADE
 AT
JOHN TYLER
 A CONDOMINIUM
 JAMES CITY COUNTY, VIRGINIA

Jo# 160921



Hayden Frye and Associates, Inc.
Land Surveyors
 333 KELLAM ROAD, SUITE 200
 VIRGINIA BEACH, VA, 23462
 PH: (757) 491-7228 FX: (757) 491-7229

DATE: MAY 15, 2019
 SCALE: 1"=10'
 SHEET 5 OF 5 THIS PHASE

City of Williamsburg & County of James City
 Circuit Court: This PLAT was recorded on
 July 9, 2019

at 11:45 AM/PM, PB PG

Document # 190009757
 MONA A. FOLEY, CLERK
 Clerk



JCC Subdivision Agent
 Approval Not Required