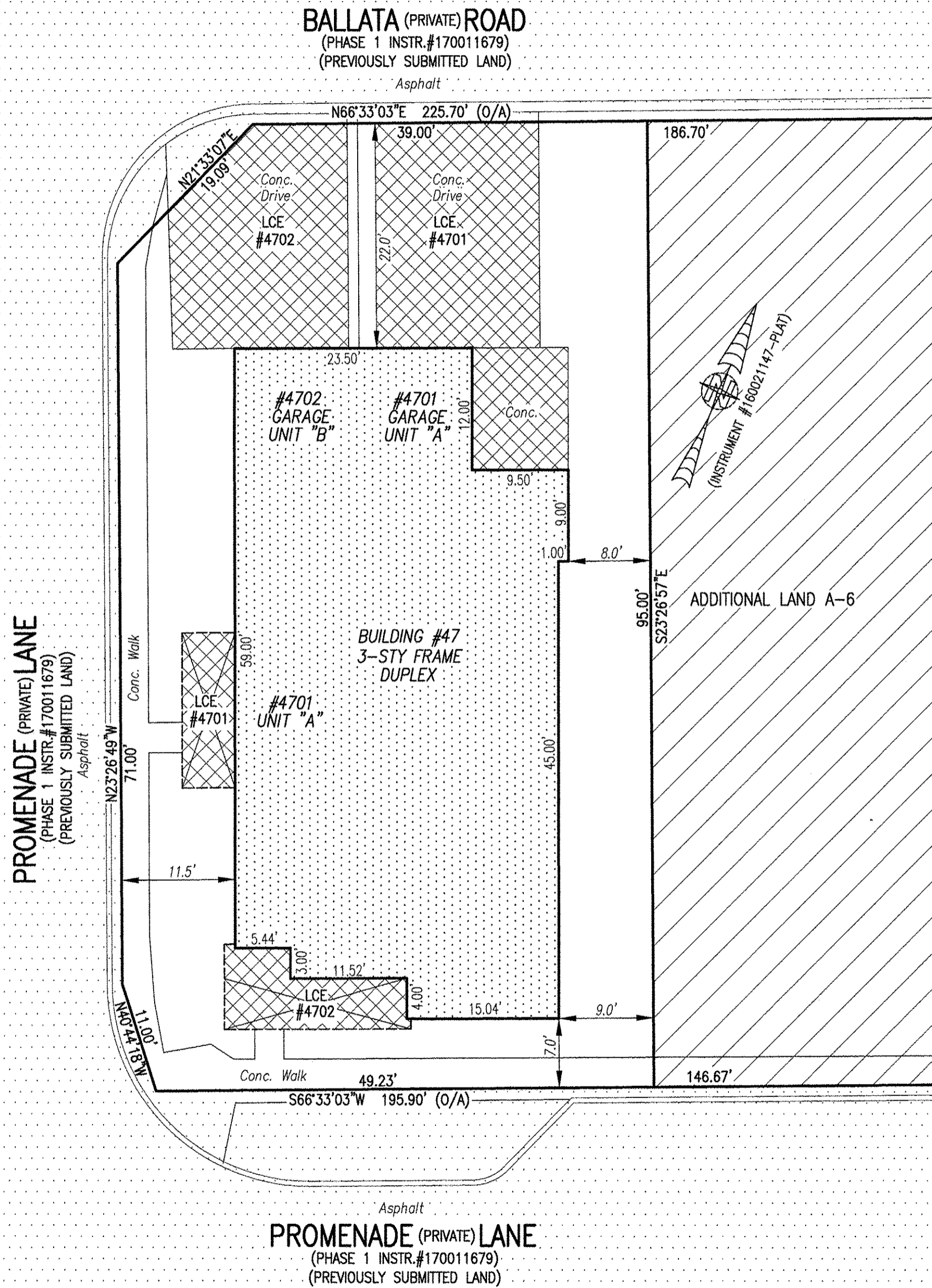
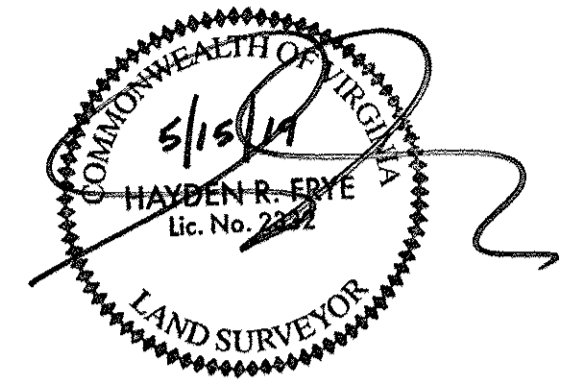
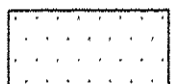
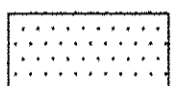

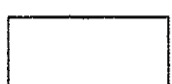
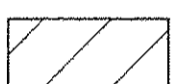


190009757

I HEREBY CERTIFY THAT THIS PLAT IS ACCURATE AND THAT IT COMPLIES WITH THE PROVISIONS OF THE CODE OF VIRGINIA OF 1950 AS AMENDED, § 55-79.58 AND I FURTHER CERTIFY THAT ALL IMPROVEMENTS THEREOF DEPICTED HEREON, PURSUANT TO THE CODE OF VIRGINIA § 55-79.58A, ARE SUBSTANTIALLY COMPLETE.



-  -INDICATES PREVIOUSLY SUBMITTED LAND
-  -INDICATES BUILDING AREA (SEE PLANS FOR UNIT DIMENSIONS)
-  -INDICATES LIMITED COMMON ELEMENT (LCE) ASSIGNED TO A UNIT # UNIT ASSIGNED
-  -INDICATES COMMON ELEMENT (EXCLUDING AREAS OUTSIDE SUBMITTED LAND)
-  -INDICATES ADDITIONAL LAND

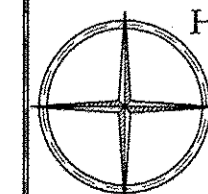
5 Large/Small Plat(s) Recorded
herewith as # 190009757

City of Williamsburg & County of James City
Circuit Court: This PLAT was recorded on
July 9, 2019
at 11:45 AM, PB PG
Document # 190009757
MONA A. FOLEY, CLERK
Monica Foley Clerk

THIS SHEET: BUILDING DETAIL

PHASE 47
CONDOMINIUM PLAT AND PLAN
OF
THE PROMENADE
AT
JOHN TYLER
A CONDOMINIUM
JAMES CITY COUNTY, VIRGINIA

Jo# 160921



Hayden Frye and Associates, Inc.
Land Surveyors
333 KELLAM ROAD, SUITE 200
VIRGINIA BEACH, VA, 23462
PH: (757) 491-7228 FX: (757) 491-7229

DATE: MAY 15, 2019

SCALE: 1"=10'

SHEET 3 OF 5 THIS PHASE

JCC Subdivision Agent *ECC*
Approval Not Required

