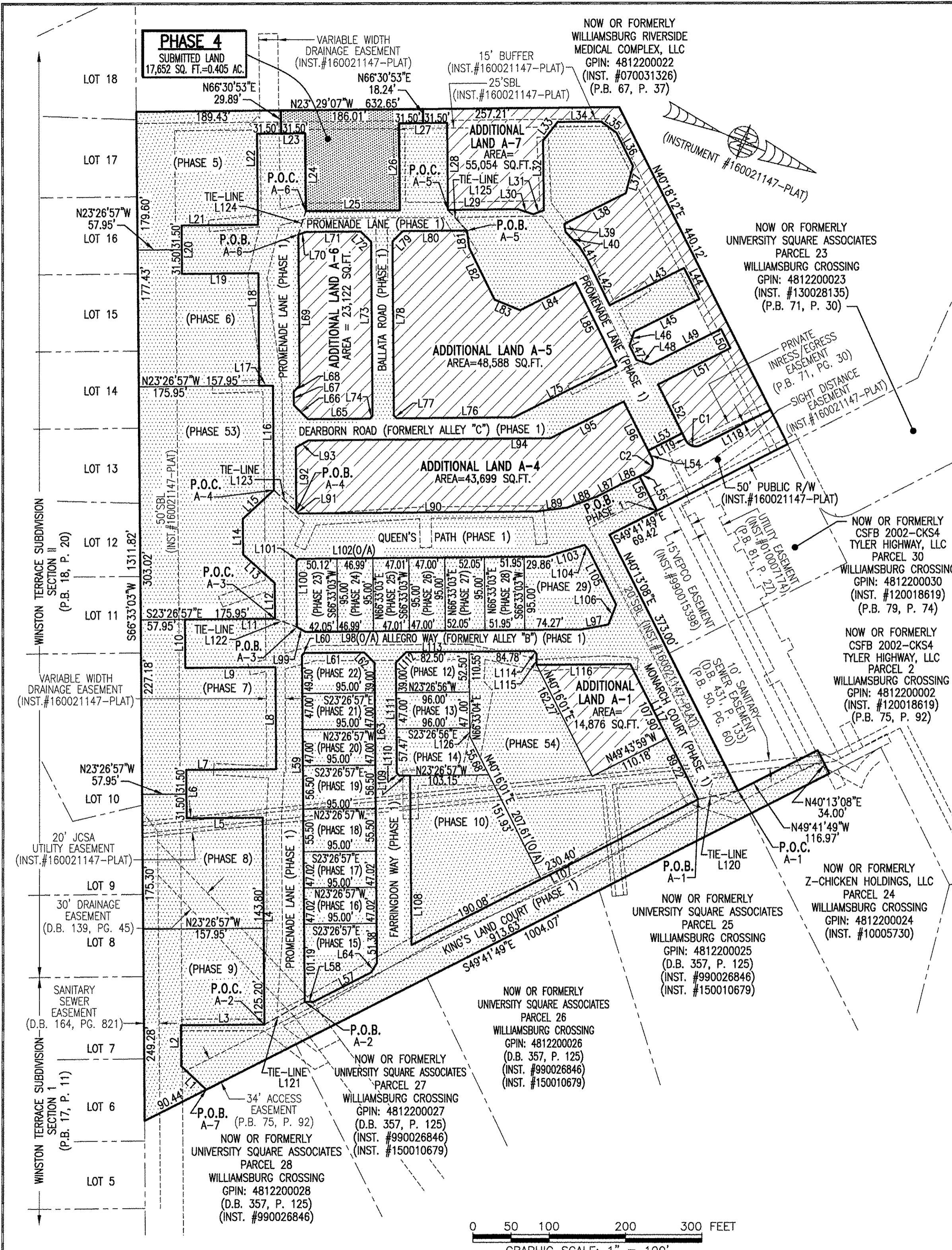


190007409



LINE TABLE											
NO.	BEARING	DISTANCE	NO.	BEARING	DISTANCE	NO.	BEARING	DISTANCE	NO.	BEARING	DISTANCE
L1	S20°01'13"W	44.97'	L26	S66°33'03"W	113.01'	L51	S49°17'28"E	106.06'	L76	S23°26'57"E	153.56'
L2	S66°33'03"W	53.15'	L27	N23°26'57"W	63.00'	L52	N40°18'11"E	70.86'	L77	S21°33'03"W	4.95'
L3	N23°26'57"W	109.47'	L28	N66°33'03"E	113.01'	L53	S49°41'49"E	50.00'	L78	S66°33'03"W	226.04'
L4	S66°33'03"W	269.00'	L29	N23°26'49"W	91.87'	L54	N40°18'11"E	10.00'	L79	N68°27'04"W	19.09'
L5	S23°26'57"E	100.00'	L30	N04°56'59"W	20.95'	L55	S49°41'49"E	10.00'	L80	N23°27'12"W	84.32'
L6	S66°33'03"W	63.00'	L31	N43°09'18"W	14.72'	L56	N40°18'11"E	50.00'	L81	N59°51'39"E	22.83'
L7	N23°26'57"W	118.00'	L32	S66°30'53"W	90.51'	L57	S49°41'49"E	84.74'	L82	N40°42'28"E	75.00'
L8	S66°33'03"W	132.68'	L33	N74°30'33"W	30.87'	L58	S24°33'07"E	11.47'	L83	N00°46'13"W	36.04'
L9	S23°26'57"E	118.00'	L34	N23°29'07"W	57.00'	L59	S66°33'03"W	450.73'	L84	N49°17'32"W	81.13'
L10	S66°33'03"W	63.00'	L35	N13°08'50"E	24.93'	L60	N68°26'57"W	4.24'	L85	N40°42'32"E	121.00'
L11	N23°26'57"W	118.00'	L36	N40°41'49"E	48.00'	L61	N23°26'57"W	78.50'	L86	S45°45'02"E	26.95'
L12	S66°33'03"W	46.52'	L37	N81°38'35"E	36.41'	L62	N21°33'03"E	19.09'	L87	S49°41'49"E	35.15'
L13	S18°43'43"W	55.33'	L38	S49°18'11"E	90.11'	L63	N66°33'03"E	390.42'	L88	S43°08'04"E	41.26'
L14	S66°33'03"W	46.52'	L39	N58°03'08"E	10.61'	L64	S81°34'23"E	14.26'	L89	S30°00'34"E	41.26'
L15	N65°37'37"W	55.33'	L40	N23°26'55"E	25.94'	L65	S23°26'57"E	81.00'	L90	S23°26'49"E	310.88'
L16	S66°33'03"W	135.69'	L41	N34°57'20"E	20.26'	L66	S21°33'03"W	26.16'	L91	S21°33'07"W	4.24'
L17	S23°26'57"E	18.00'	L42	N40°43'30"E	65.92'	L67	S66°33'03"W	17.38'	L92	S66°33'03"W	82.68'
L18	S66°33'03"W	145.93'	L43	N49°17'28"W	108.73'	L68	N68°26'57"W	11.31'	L93	N53°08'03"W	18.83'
L19	S23°26'57"E	100.00'	L44	N40°42'32"E	45.00'	L69	S66°33'03"W	195.90'	L94	N23°26'57"W	317.18'
L20	S66°33'03"W	63.00'	L45	S49°17'28"E	95.23'	L70	N40°44'18"W	11.00'	L95	N49°17'28"E	107.22'
L21	N23°26'57"W	100.00'	L46	N85°40'58"E	19.10'	L71	N23°26'49"W	71.00'	L96	N40°18'11"E	81.23'
L22	S66°33'03"W	118.31'	L47	N40°39'25"E	20.64'	L72	N21°33'07"E	19.09'	L97	S33°14'07"E	36.03'
L23	N23°28'23"W	63.00'	L48	N04°19'02"W	19.08'	L73	N66°33'03"E	225.70'	L98	S23°26'57"E	361.32'
L24	N66°33'03"E	101.24'	L49	N49°17'28"W	103.50'	L74	S71°09'13"E	5.20'	L99	S06°21'20"W	12.95'
L25	N23°26'49"W	123.00'	L50	N40°42'32"E	27.52'	L75	S49°17'28"E	150.14'	L100	S66°39'51"W	85.57'
									L101	N68°23'33"W	4.24'
									L102	N23°26'57"W	324.98'
									L103	N40°12'30"W	51.55'
									L104	N25°45'15"E	8.23'
									L105	N40°13'08"E	80.19'
									L106	N88°35'55"E	27.66'
									L107	S49°43'59"E	420.48'
									L108	S66°33'03"W	220.39'
									L109	S23°26'57"E	14.00'
									L110	S21°33'04"W	4.95'
									L111	S66°33'04"W	143.47'
									L112	N68°26'56"W	19.09'
									L113	N23°26'57"W	167.28'
									L114	N21°33'03"E	4.95'
									L115	N66°33'03"E	14.50'
									L116	N23°26'57"W	122.79'
									L117	N40°13'08"E	197.12'
									L118	S49°41'49"E	101.83'
									L119	S40°18'11"W	10.00'
									L120	S35°02'48"E	53.18'
									L121	N52°05'49"W	60.39'
									L122	N02°22'49"W	30.77'
									L123	N20°14'54"E	40.29'
									L124	N84°50'00"E	31.88'
									L125	N23°57'14"E	36.67'
									L126	N66°33'04"E	11.05'

CURVE TABLE						
NO.	RADIUS	DELTA	LENGTH	TANGENT	CHORD	CH. BEARING
C1	15.00'	90°00'00"	23.56'	15.00'	21.21'	S04°41'49"E
C2	15.00'	90°00'00"	23.56'	15.00'	21.21'	N85°18'11"E

I HEREBY CERTIFY THAT THIS PLAT IS ACCURATE AND THAT IT COMPLIES WITH THE PROVISIONS OF THE CODE OF VIRGINIA OF 1950 AS AMENDED, § 55-79.58 AND I FURTHER CERTIFY THAT ALL IMPROVEMENTS THEREOF DEPICTED HEREON, PURSUANT TO THE CODE OF VIRGINIA § 55-79.58A, ARE SUBSTANTIALLY COMPLETE.

5 Large/Small Plat(s) Recorded herewith as # 190007409



JCC Subdivision Agent Approval Not Required

City of Williamsburg & County of James City Circuit Court: This PLAT was recorded on May 22, 2019 at 9:03 AM/PM, PB PG Document # 190007409 MONA A. FOLEY, CLERK

THIS SHEET: PROPERTY DATA, EASEMENTS, CURVE AND LINE TABLE

PHASE 4
CONDOMINIUM PLAT AND PLAN
 OF
THE PROMENADE
 AT
JOHN TYLER
 A CONDOMINIUM
 JAMES CITY COUNTY, VIRGINIA

JCC# 160921
 Hayden Frye and Associates, Inc.
Land Surveyors
 333 KELLAM ROAD, SUITE 200
 VIRGINIA BEACH, VA, 23462
 PH: (757) 491-7228 FX: (757) 491-7229

DATE: MAY 10, 2019
 SCALE: 1"=100'
 SHEET 2 OF 5 THIS PHASE

