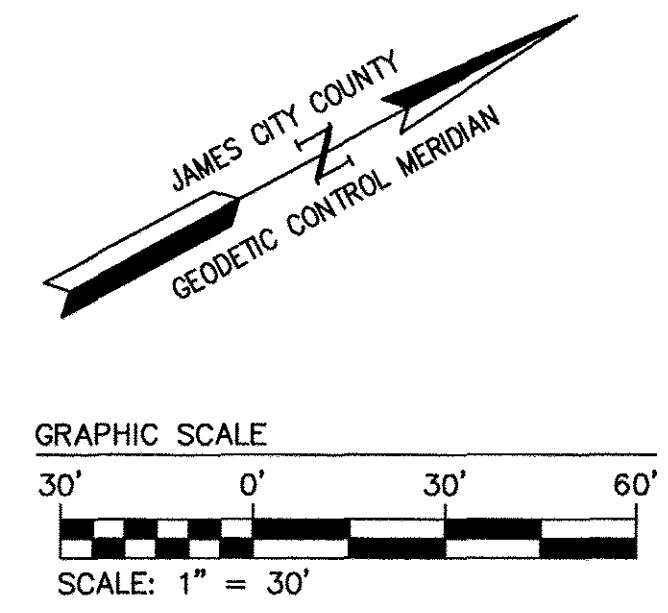
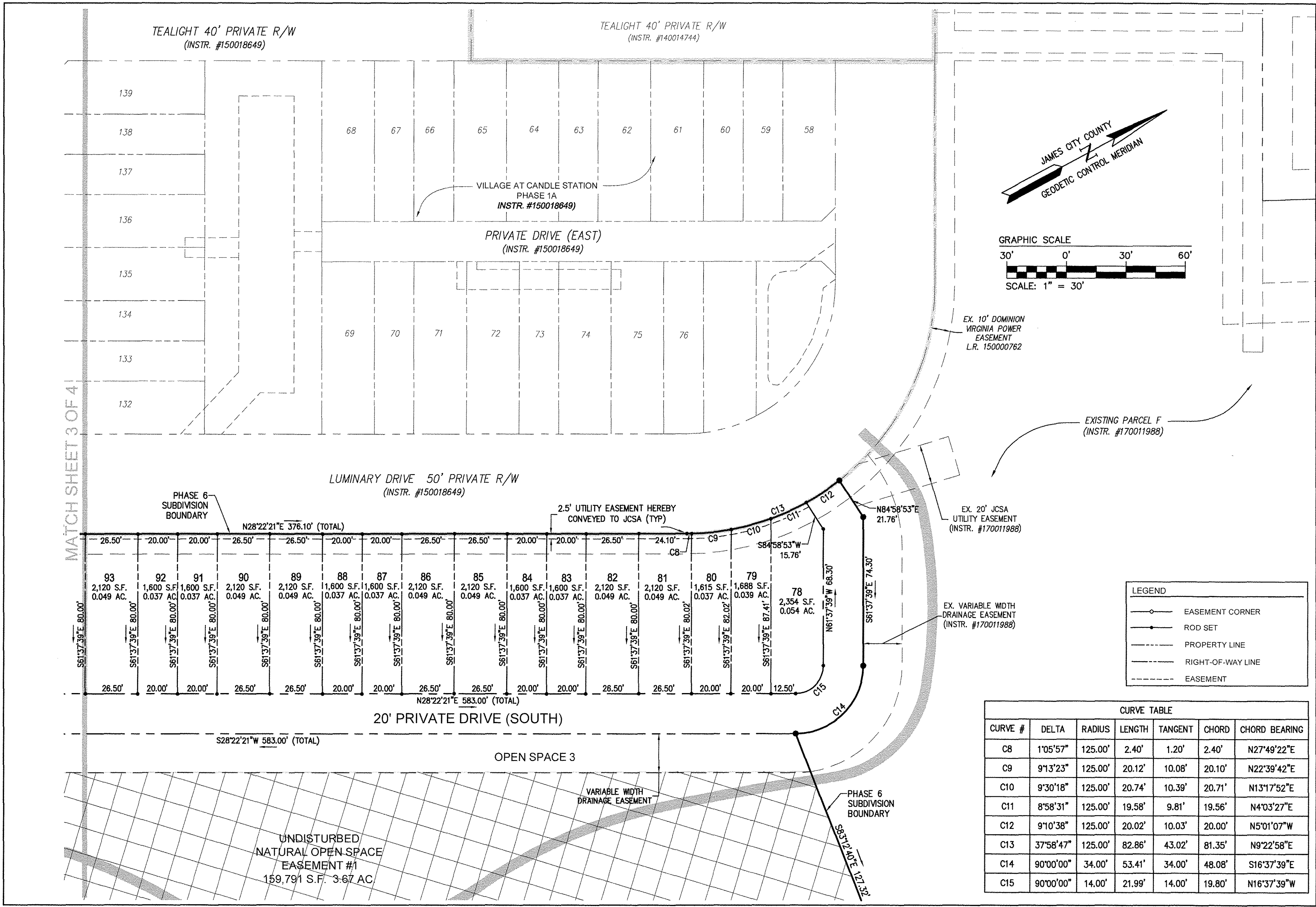


190006651



LEGEND

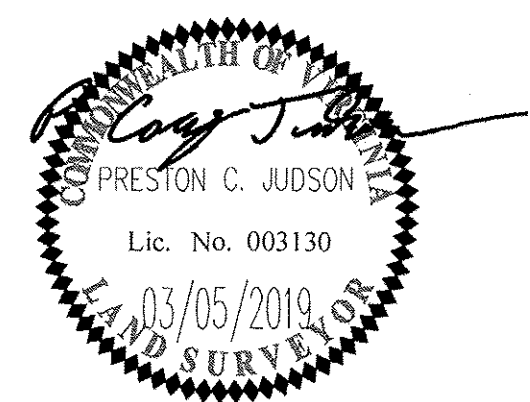
- EASEMENT CORNER
- ROD SET
- PROPERTY LINE
- RIGHT-OF-WAY LINE
- EASEMENT

CURVE TABLE

CURVE #	DELTA	RADIUS	LENGTH	TANGENT	CHORD	CHORD BEARING
C8	1°05'57"	125.00'	2.40'	1.20'	2.40'	N27°49'22"E
C9	9°13'23"	125.00'	20.12'	10.08'	20.10'	N22°39'42"E
C10	9°30'18"	125.00'	20.74'	10.39'	20.71'	N13°17'52"E
C11	8°58'31"	125.00'	19.58'	9.81'	19.56'	N4°03'27"E
C12	9°10'38"	125.00'	20.02'	10.03'	20.00'	N5°01'07"W
C13	37°58'47"	125.00'	82.86'	43.02'	81.35'	N9°22'58"E
C14	90°00'00"	34.00'	53.41'	34.00'	48.08'	S16°37'39"E
C15	90°00'00"	14.00'	21.99'	14.00'	19.80'	N16°37'39"W

City of Williamsburg & County of James City
 Circuit Court: This PLAT was recorded on
May 8, 2019
 at 8:56 AM/PM, PG
 Document # 190006651
 MONA A. FOLEY, CLERK
 Clerk

4 Large/Small Plat(s) Recorded
 herewith as # 190006651



AES
 CONSULTING ENGINEERS
 Hampton Roads | Central Virginia | Middle Peninsula
 5248 Olde Towne Road, Suite 1
 Williamsburg, Virginia 23188
 Phone: (757) 253-0040
 Fax: (757) 220-8994
 www.aesva.com

PLAT OF SUBDIVISION
VILLAGE AT CANDLE STATION
PHASE 6, LOTS 78-123
AND OPEN SPACE 1, 2, AND 3
FOR: CANDLE DEVELOPMENT, L.L.C.

STONEMASS DISTRICT JAMES CITY COUNTY VIRGINIA

Project Contacts: JAG/PCJ
 Project Number: W10059-00
 Scale: 1"=30' Date: 01/26/18
 Sheet Number
4 of 4

S:\008\1025910_Candle_Factory_Mixed_Use\GIS\Plat\Subdivision\Phase6\Phase6_Plat.dwg, 8/1/2019 3:29:48 PM, Dana Dwyer