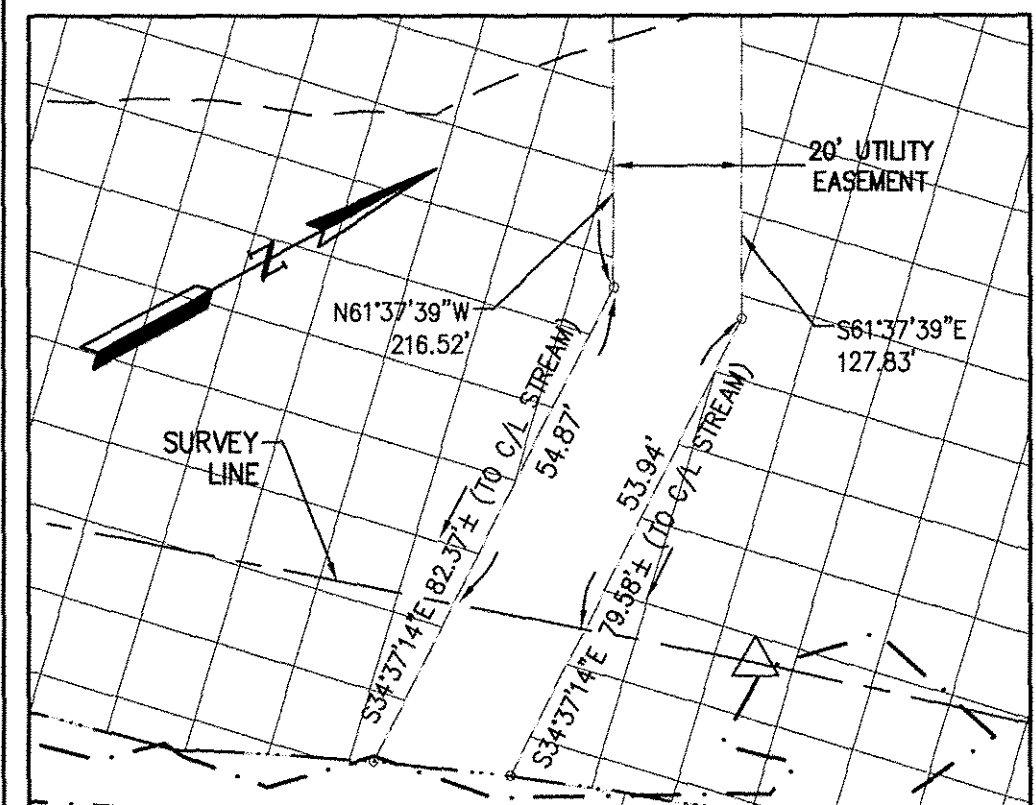
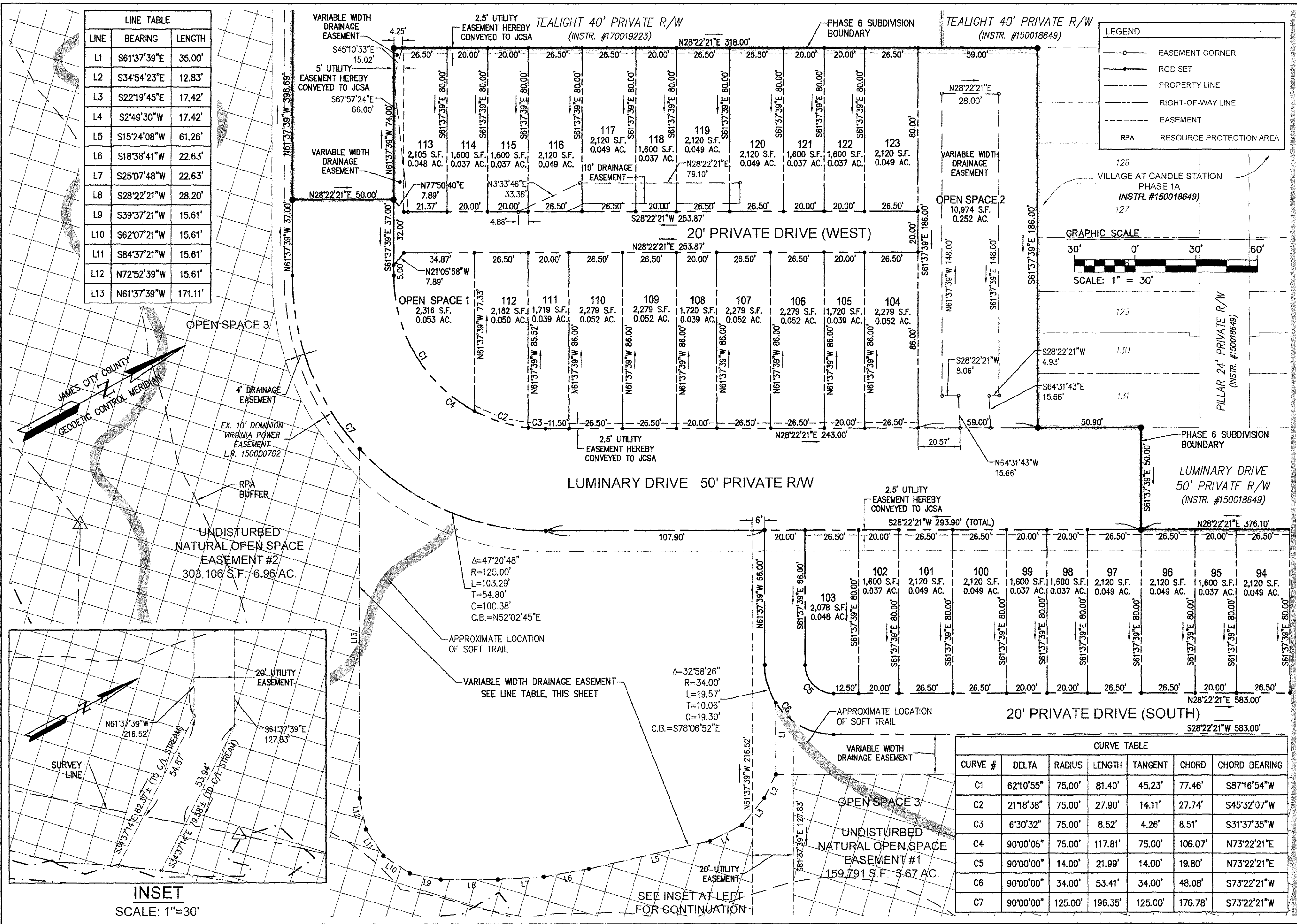
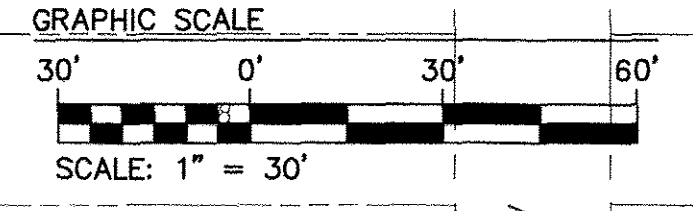


190006651

LINE	BEARING	LENGTH
L1	S61°37'39"E	35.00'
L2	S34°54'23"E	12.83'
L3	S22°19'45"E	17.42'
L4	S2°49'30"W	17.42'
L5	S15°24'08"W	61.26'
L6	S18°38'41"W	22.63'
L7	S25°07'48"W	22.63'
L8	S28°22'21"W	28.20'
L9	S39°37'21"W	15.61'
L10	S62°07'21"W	15.61'
L11	S84°37'21"W	15.61'
L12	N72°52'39"W	15.61'
L13	N61°37'39"W	171.11'

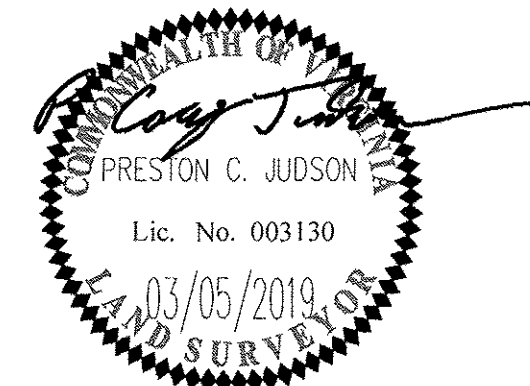
LEGEND	
	EASEMENT CORNER
	ROD SET
	PROPERTY LINE
	RIGHT-OF-WAY LINE
	EASEMENT
	RPA RESOURCE PROTECTION AREA



INSET
SCALE: 1"=30'

CURVE TABLE						
CURVE #	DELTA	RADIUS	LENGTH	TANGENT	CHORD	CHORD BEARING
C1	62°10'55"	75.00'	81.40'	45.23'	77.46'	S87°16'54"W
C2	21°18'38"	75.00'	27.90'	14.11'	27.74'	S45°32'07"W
C3	6°30'32"	75.00'	8.52'	4.26'	8.51'	S31°37'35"W
C4	90°00'05"	75.00'	117.81'	75.00'	106.07'	N73°22'21"E
C5	90°00'00"	14.00'	21.99'	14.00'	19.80'	N73°22'21"E
C6	90°00'00"	34.00'	53.41'	34.00'	48.08'	S73°22'21"W
C7	90°00'00"	125.00'	196.35'	125.00'	176.78'	S73°22'21"W

City of Williamsburg & County of James City
Circuit Court: This PLAT was recorded on
May 8, 2019
at 8:56 AM/PM, PB PG
Document # 190006651
MONA A. FOLEY, CLERK
Mona A. Foley, Clerk



AES
CONSULTING ENGINEERS
5248 Olde Towne Road, Suite 1
Williamsburg, Virginia 23188
Phone: (757) 253-0040
Fax: (757) 220-8994
www.aesva.com

PLAT OF SUBDIVISION
VILLAGE AT CANDLE STATION
PHASE 6, LOTS 78-123
AND OPEN SPACE 1, 2, AND 3
FOR: CANDLE DEVELOPMENT, L.L.C.

Project Contacts: JAG/PCJ
Project Number: W10059-00
Scale: 1"=30' Date: 01/26/18
Sheet Number
3 of 4

Rev.	Date	Description	Revised by
1	03/15/2018	CHANGES TO ADDRESS JCC COMMENTS	JAG

S:\JOB\190006651\190006651.dwg, 03/15/2018, 11:12 AM, User: jay.d... 190006651.dwg, 03/15/2018, 11:12 AM, User: jay.d...