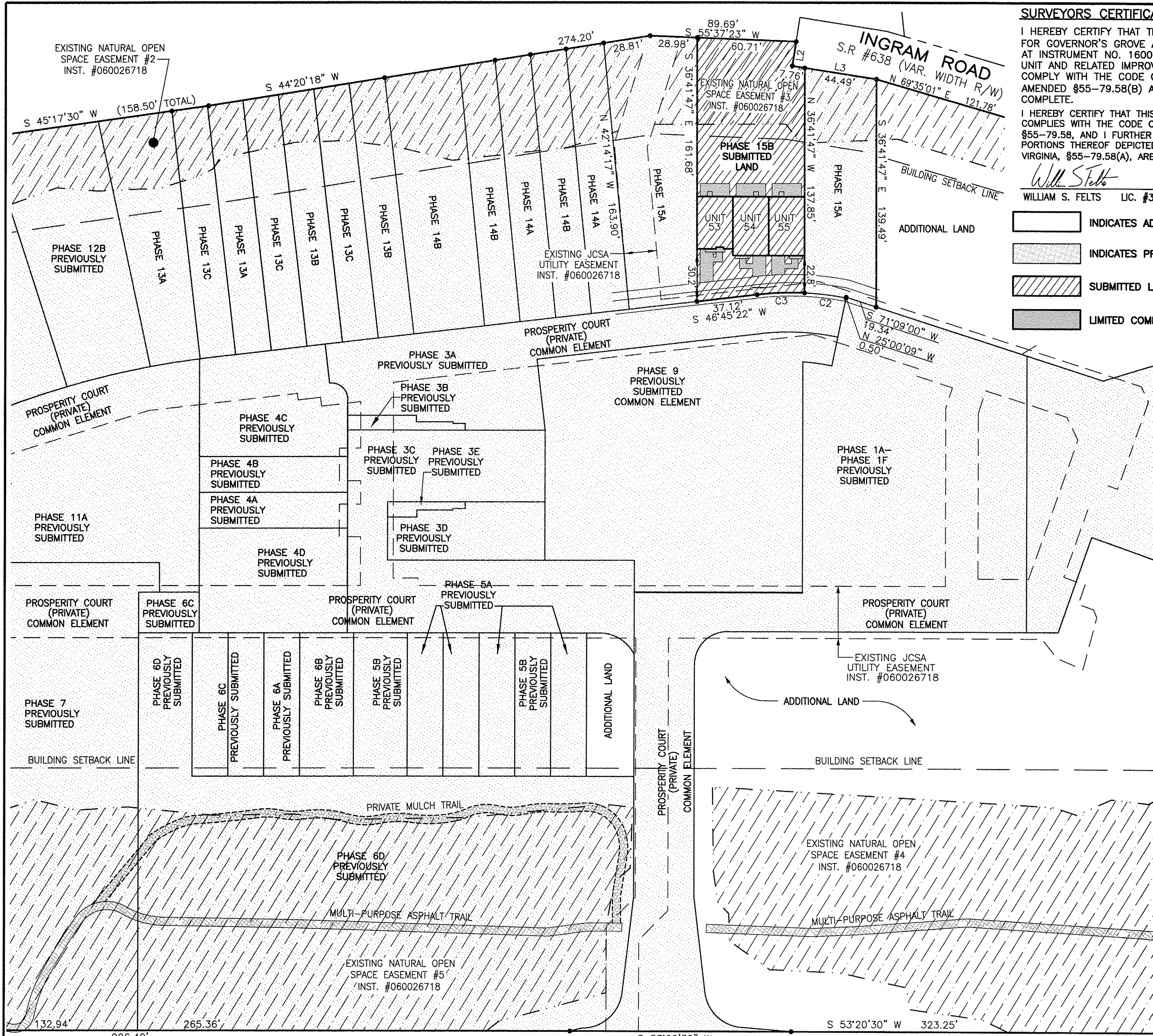


190005895



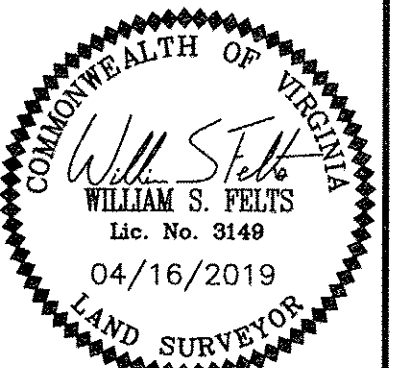
SURVEYORS CERTIFICATE

I HEREBY CERTIFY THAT THE PLAN PREVIOUSLY RECORDED FOR GOVERNOR'S GROVE AT FIVE FORKS, A CONDOMINIUM AT INSTRUMENT NO. 160009184 ACCURATELY DEPICTS THE UNIT AND RELATED IMPROVEMENTS SHOWN AND THAT THEY COMPLY WITH THE CODE OF VIRGINIA OF 1950, AS AMENDED §55-79.58(B) AND ARE SUBSTANTIALLY COMPLETE.

I HEREBY CERTIFY THAT THIS PLAT IS ACCURATE AND THAT IT COMPLIES WITH THE CODE OF VIRGINIA OF 1950, AS AMENDED, §55-79.58, AND I FURTHER CERTIFY THAT ALL IMPROVEMENTS OR PORTIONS THEREOF DEPICTED HEREON, PURSUANT TO THE CODE OF VIRGINIA, §55-79.58(A), ARE SUBSTANTIALLY COMPLETE.

William S. Felts
 WILLIAM S. FELTS LIC. #3149

04/16/2019
 DATE



- INDICATES ADDITIONAL LAND
- INDICATES PREVIOUSLY SUBMITTED LAND
- SUBMITTED LAND
- LIMITED COMMON ELEMENT (LCE)

City of Williamsburg & County of James City
 Circuit Court: This PLAT was recorded on
 April 24, 2019
 at 2:46 AM/PM, PB PG
 Document # 190005895
 MONA A. FOLEY, CLERK
Mona A. Foley Clerk

RECORD PLAT
 DOC. #050025743

JCC Subdivision Agent
 Approval Not Required
 Etc

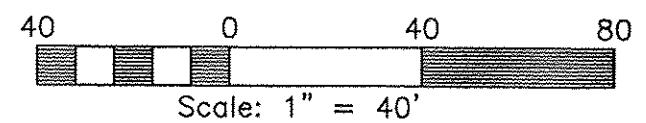
PLAT OF
PHASE 15B
GOVERNOR'S GROVE AT FIVE FORKS
 A CONDOMINIUM
 LOCATED IN THE BERKELEY DISTRICT
 JAMES CITY COUNTY, VIRGINIA

SCALE: 1" = 40'
 DATE: 04/16/2019 SHEET: 2 OF 2 JOB# 06-460

LandTech
Resources, Inc.
 Engineering & Surveying Consultants

3925 Midlands Road, Williamsburg, VA 23188
 Phone: (757) 565-1677 Fax: (757) 565-0782
 web: landtechresources.com

CURVE	RADIUS	ARC	CHORD	CHORD BEARING	DELTA
C2	172.26'	25.66'	25.64'	S 60°12'51" W	8°32'05"
C3	172.26'	29.18'	29.15'	N 51°05'36" E	9°42'24"



2 Large/Small Plat(s) Recorded
 herewith as # 190005895