

**UNDISTURBED NATURAL OPEN SPACE EASEMENT AREA TABULATION**

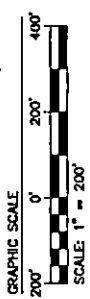
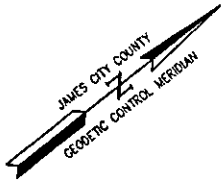
#	740,805 SF ±	17,006 AC ±
#B	171,428 SF ±	2,787 AC ±
#10A	142,822 SF ±	3,278 AC ±
#11	233,339 SF ±	5,334 AC ±
#12A	204,188 SF ±	6,157 AC ±
<b>TOTAL</b>	<b>1,505,582 SF ±</b>	<b>34,563 AC ±</b>

**LEGEND:**

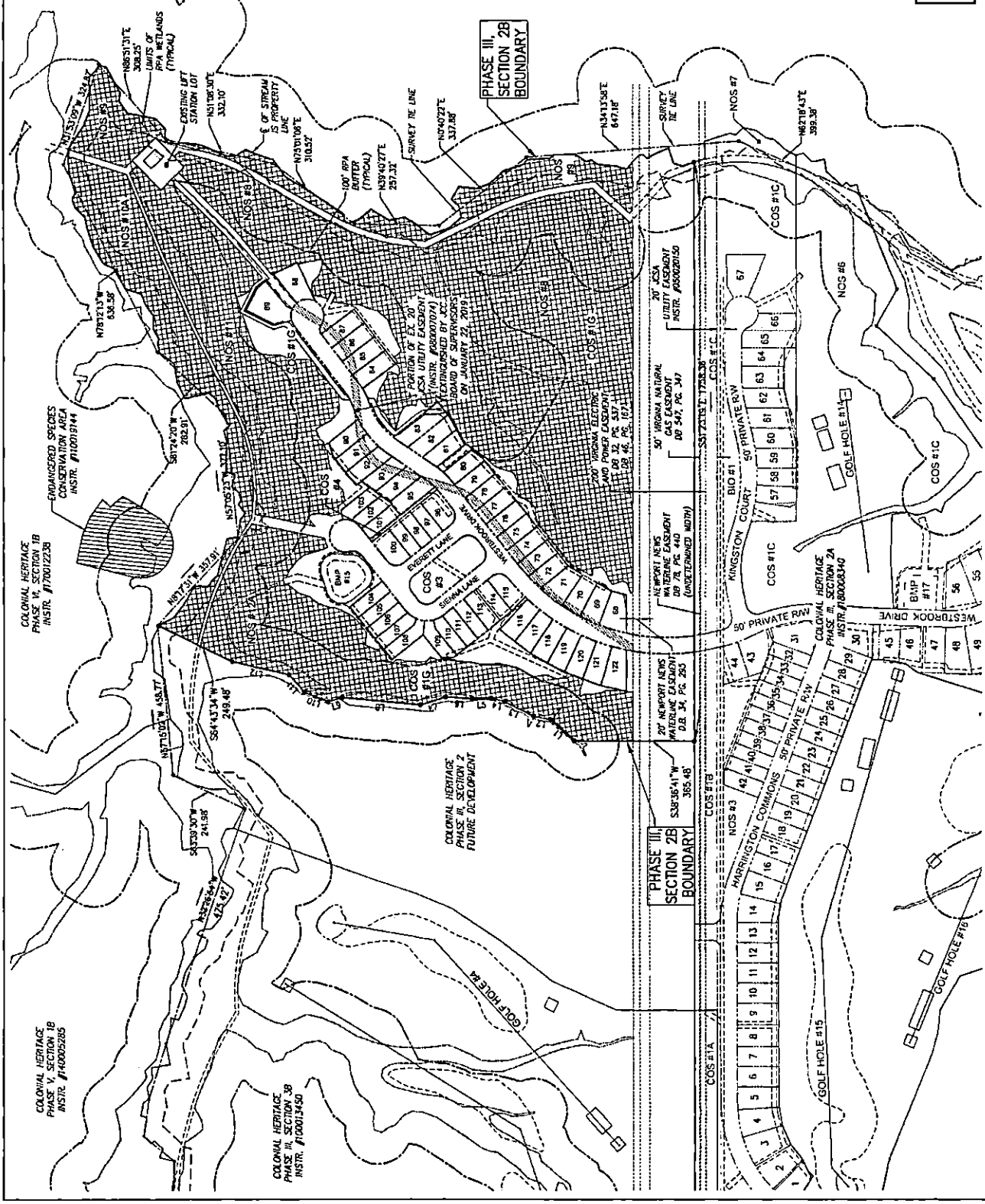
- UNDISTURBED NATURAL OPEN SPACE EASEMENT AREA
- EXISTING NATURAL OPEN SPACE EASEMENT AND CONSERVATION AREA
- EXISTING NATURAL OPEN SPACE EASEMENT AND CONSERVATION AREA
- DENOTES THE PORTION OF JCSA UTILITY AND ACCESS EASEMENT EXTINGUISHED

**BOUNDARY LINE TABLE**

LINE	BEARING	LENGTH
L1	S89°30'38"W	95.77
L2	S50°33'25"W	55.26
L3	S65°11'43"W	98.51
L4	S20°05'24"W	42.70
L5	S73°21'17"W	57.63
L6	S42°42'36"W	82.02
L7	S71°33'07"W	80.85
L8	S44°03'49"W	239.25
L9	S21°36'41"W	44.28
L10	S69°44'12"W	77.21
L11	S87°37'56"W	70.22
L12	S45°55'50"W	178.14



NOTE: SEE SHEET 7 FOR LOT, OPEN SPACE AND RIGHT-OF-WAY CURVE TABLES.



REF: JCC S-18-0053

PLAT OF SUBDIVISION  
 LOTS 68 THRU 122 & COS #1G, #2, AND #4  
**COLONIAL HERITAGE**  
 PHASE III - SECTION 2B  
 OWNER / DEVELOPER: COLONIAL HERITAGE, LLC

314 Old Towne Road, Suite 1  
 Williamsburg, Virginia 23185  
 Phone: (757) 333-0044  
 Fax: (757) 333-0044  
 www.aes-engineers.com



Date	Description	Revised By
1/15/2018	REVISED PER COUNTY COMMENTS DATED 10/20/18	RMS