
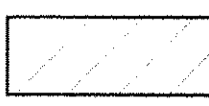
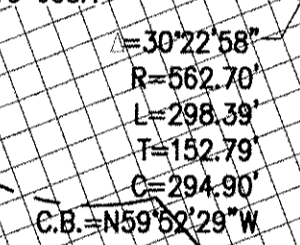
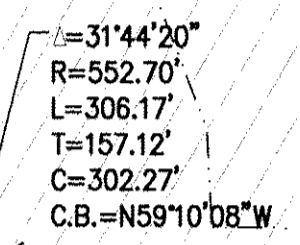
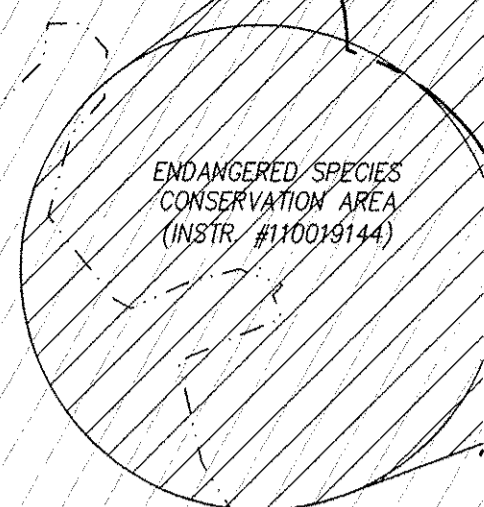
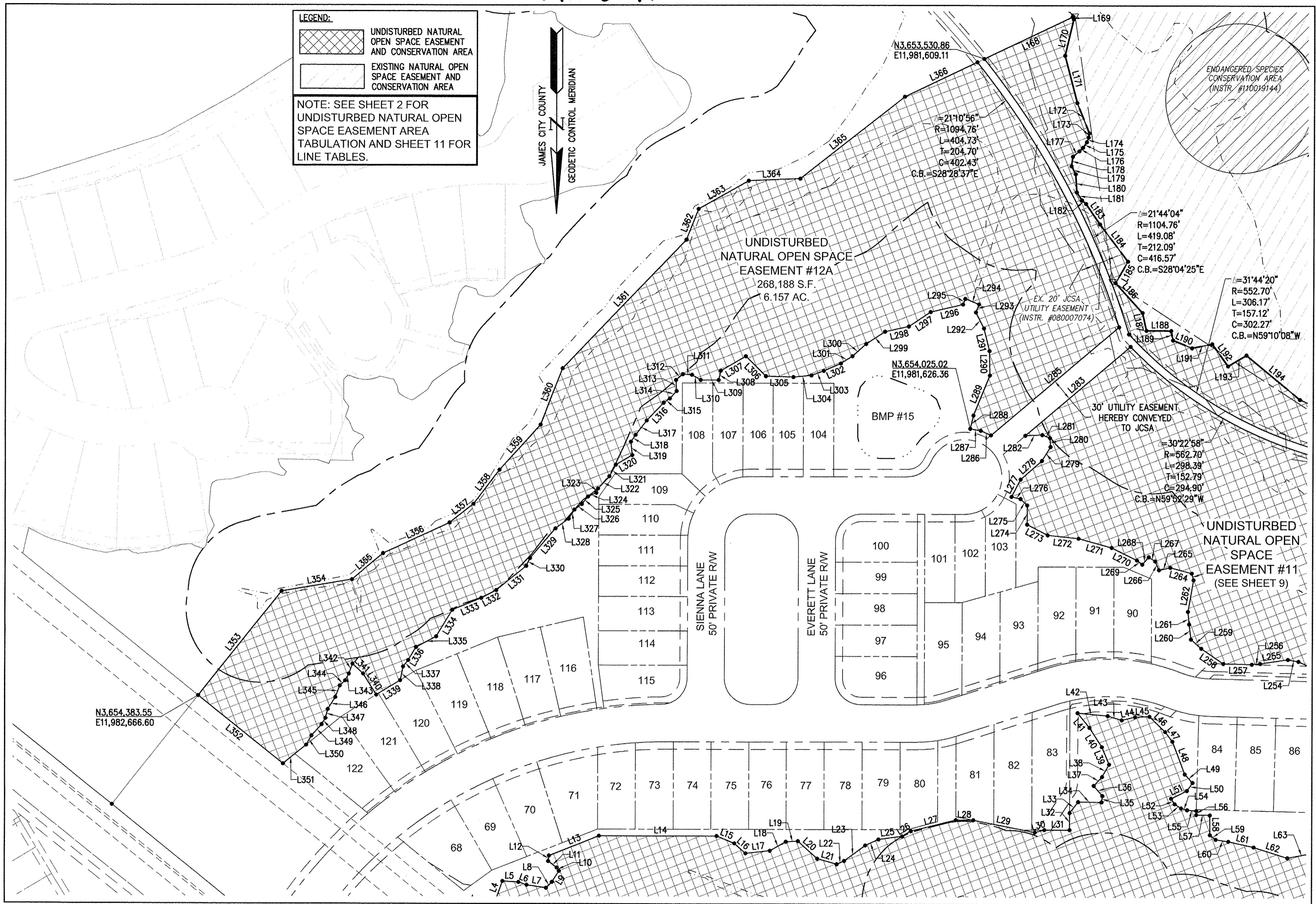


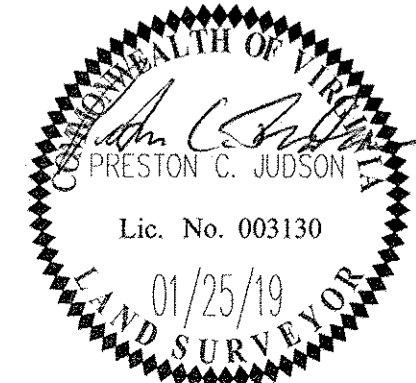
190005297

LEGEND:
 UNDISTURBED NATURAL OPEN SPACE EASEMENT AND CONSERVATION AREA
 EXISTING NATURAL OPEN SPACE EASEMENT AND CONSERVATION AREA
NOTE: SEE SHEET 2 FOR UNDISTURBED NATURAL OPEN SPACE EASEMENT AREA TABULATION AND SHEET 11 FOR LINE TABLES.

JAMES CITY COUNTY
 GEODETIC CONTROL MERIDIAN



City of Williamsburg & County of James City Circuit Court: This PLAT was recorded on April 11 2019 at 2:45 PM PB PG		
Document # 190005297 MONA A. FOLEY, CLERK <i>Mona A. Foley</i> Clerk		
1	01/25/19	REVISED PER COUNTY COMMENTS DATED 10/20/18
Rev.	Date	Description
		RMS Revised By



5248 Olde Towne Road, Suite 1
 Williamsburg, Virginia 23188
 Phone: (757) 253-0040
 Fax: (757) 220-8994
 www.aesva.com

REF: JCC S-18-0053
 PLAT OF SUBDIVISION
 LOTS 68 THRU 122 & COS #1G, #3 AND #4
**COLONIAL HERITAGE
 PHASE III - SECTION 2B**
 OWNER / DEVELOPER: COLONIAL HERITAGE, LLC
 STONEHOUSE DISTRICT JAMES CITY COUNTY VIRGINIA

Project Contacts:	PCJ/TRS
Project Number:	8881-32B
Scale:	1"=80'
Date:	08/28/18
Sheet Number	
10 of 11	

S:\05066881\32B\Phase III\Sec 2B\City of Williamsburg\Plat\Phase III_Section 2B\Plan\05066881_32B_Plan\05066881_32B_Plan.dwg, 3/22/2019 11:47:39 AM, rcs.sps