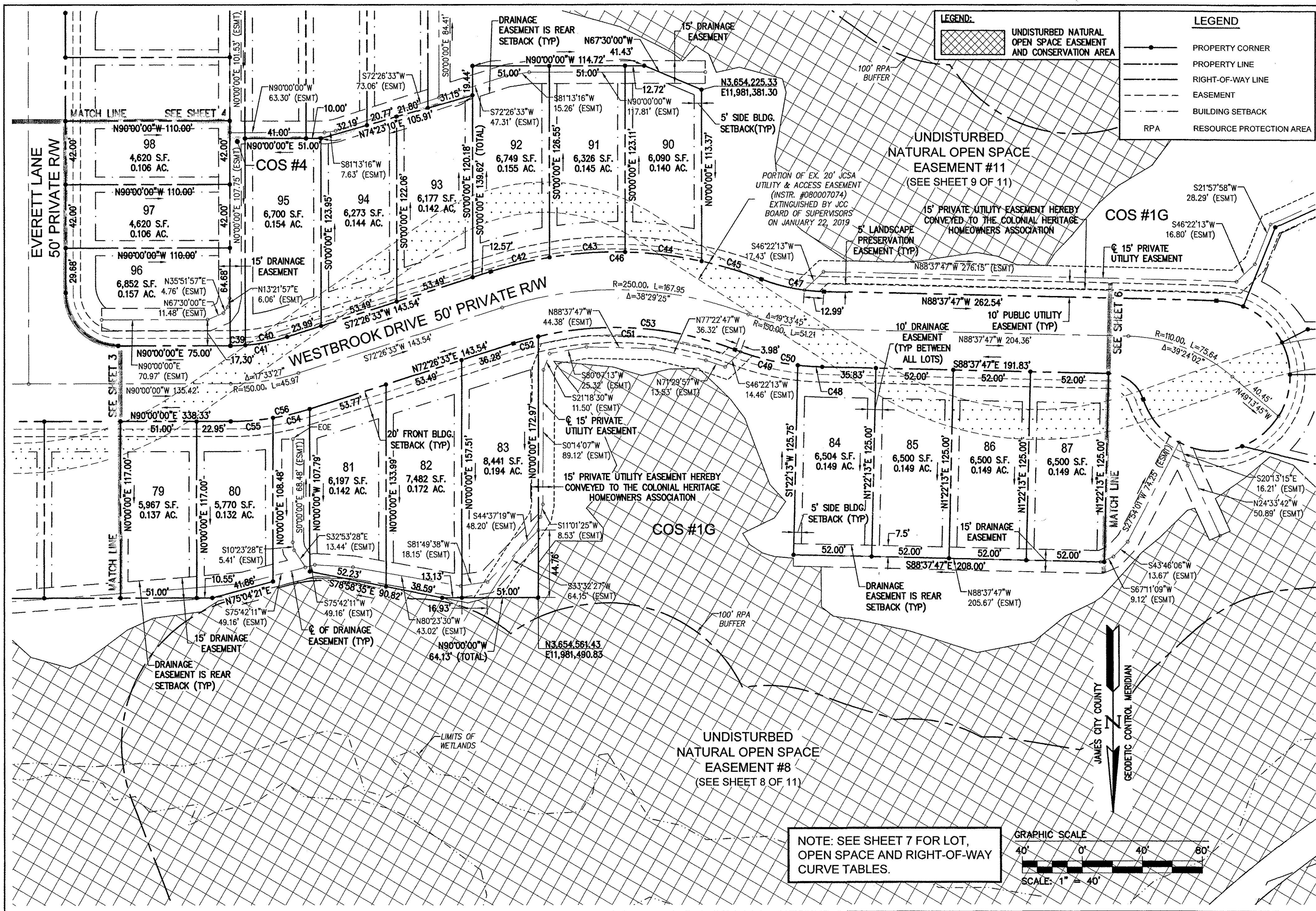
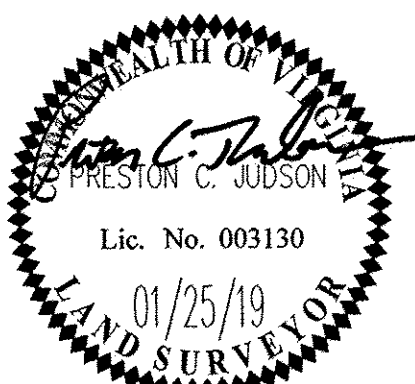


190005297



City of Williamsburg & County of James City
 Circuit Court: This PLAT was recorded on
 Apr 11 2019
 at 2:45 AM/PM, PB PG
 Document # 190005297
 MONA A. FOLEY, CLERK
 Clerk



11 Large/Small Plat(s) Recorded
 herewith as # 190005297

AES
 CONSULTING ENGINEERS
 Hampton Roads | Central Virginia | Middle Peninsula

5248 Olde Towne Road, Suite 1
 Williamsburg, Virginia 23188
 Phone: (757) 253-0040
 Fax: (757) 220-8994
 www.aesva.com

REF: JCC S-18-0053

PLAT OF SUBDIVISION
 LOTS 68 THRU 122 & COS #1G, #3 AND #4
COLONIAL HERITAGE
 PHASE III - SECTION 2B
 OWNER / DEVELOPER: COLONIAL HERITAGE, LLC

STONEHOUSE DISTRICT JAMES CITY COUNTY VIRGINIA

Project Contacts: PCJ/TRS	
Project Number: 8881-32B	
Scale: 1"=40'	Date: 08/28/18
Sheet Number	
5 of 11	

Rev.	Date	Description	RMS	Revised By
1	01/25/19	REVISED PER COUNTY COMMENTS DATED 10/2018	RMS	

S:\2018\190005297\190005297.dwg 11:56:20 AM 08/28/18