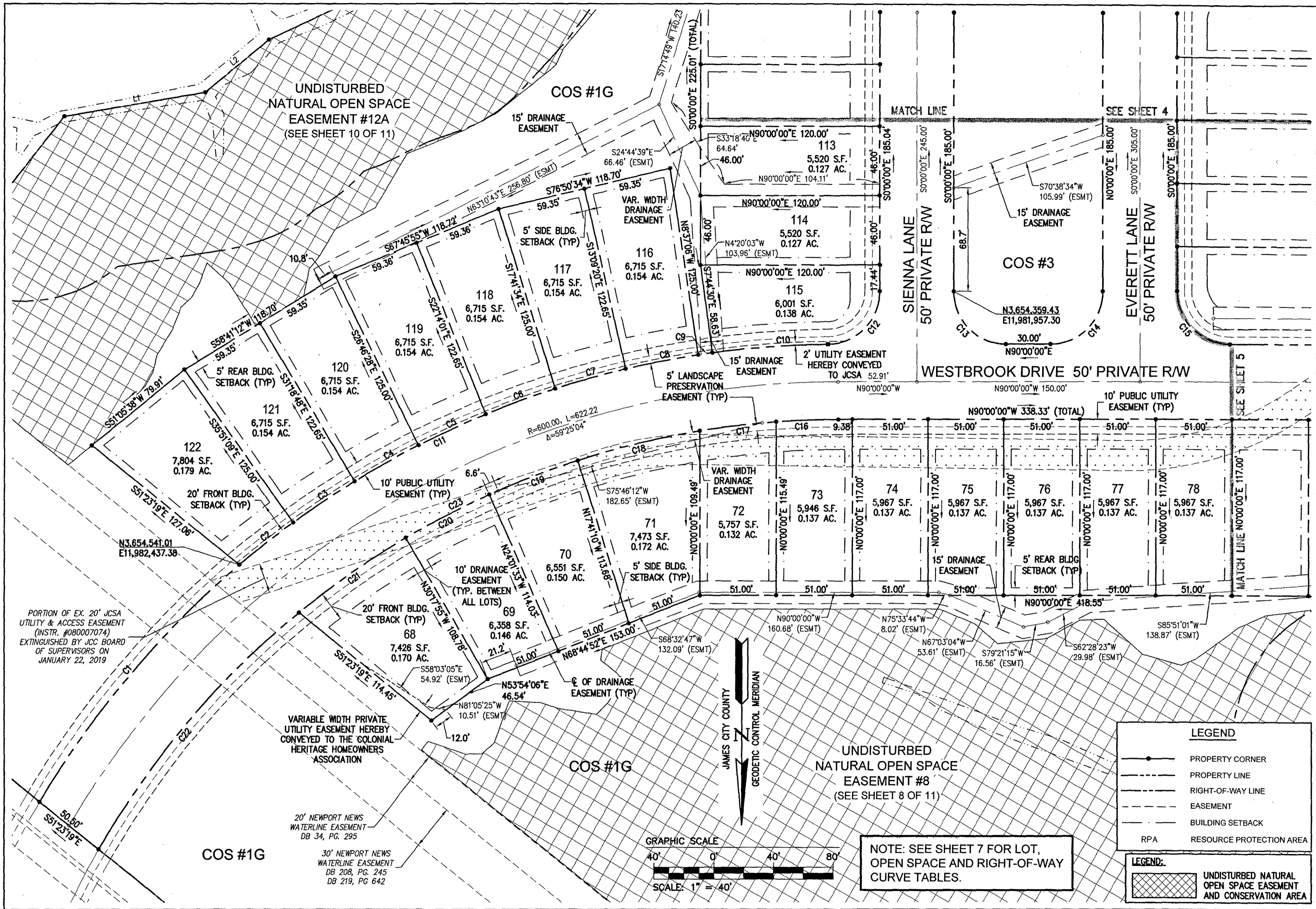


190005297



PORTION OF EX. 20' JCSA UTILITY & ACCESS EASEMENT (INSTR. #080007074) EXTINGUISHED BY JCC BOARD OF SUPERVISORS ON JANUARY 22, 2019

VARIABLE WIDTH PRIVATE UTILITY EASEMENT HEREBY CONVEYED TO THE COLONIAL HERITAGE HOMEOWNERS ASSOCIATION

NOTE: SEE SHEET 7 FOR LOT, OPEN SPACE AND RIGHT-OF-WAY CURVE TABLES.

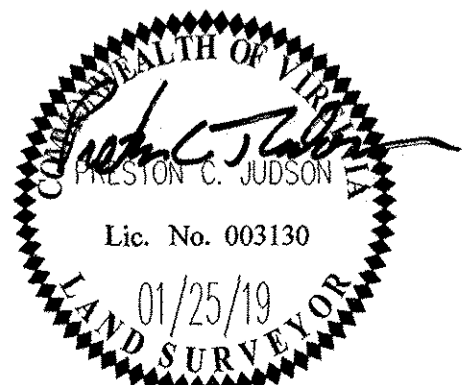
LEGEND

- PROPERTY CORNER
- PROPERTY LINE
- RIGHT-OF-WAY LINE
- EASEMENT
- BUILDING SETBACK
- RPA RESOURCE PROTECTION AREA

LEGEND:

- UNDISTURBED NATURAL OPEN SPACE EASEMENT AND CONSERVATION AREA

City of Williamsburg & County of James City Circuit Court. This PLAT was recorded on April 11 2019 at 2:45 PM, PB PG Document # 190005297 MONA A. FOLEY, CLERK		
1	01/25/19	REVISED PER COUNTY COMMENTS DATED 10/2018
Rev.	Date	Description
		RMS Revised By



AES CONSULTING ENGINEERS
 5248 Olde Towne Road, Suite 1
 Williamsburg, Virginia 23188
 Phone: (757) 253-0040
 Fax: (757) 220-8994
 www.aesva.com

REF: JCC S-18-0053
 PLAT OF SUBDIVISION
 LOTS 68 THRU 122 & COS #1G, #3 AND #4
COLONIAL HERITAGE PHASE III - SECTION 2B
 OWNER / DEVELOPER: COLONIAL HERITAGE, LLC
 STONEHOUSE DISTRICT JAMES CITY COUNTY VIRGINIA

Project Contacts:	PCJ/TRS
Project Number:	8881-32B
Scale:	1"=40'
Date:	08/28/18
Sheet Number	3 of 11