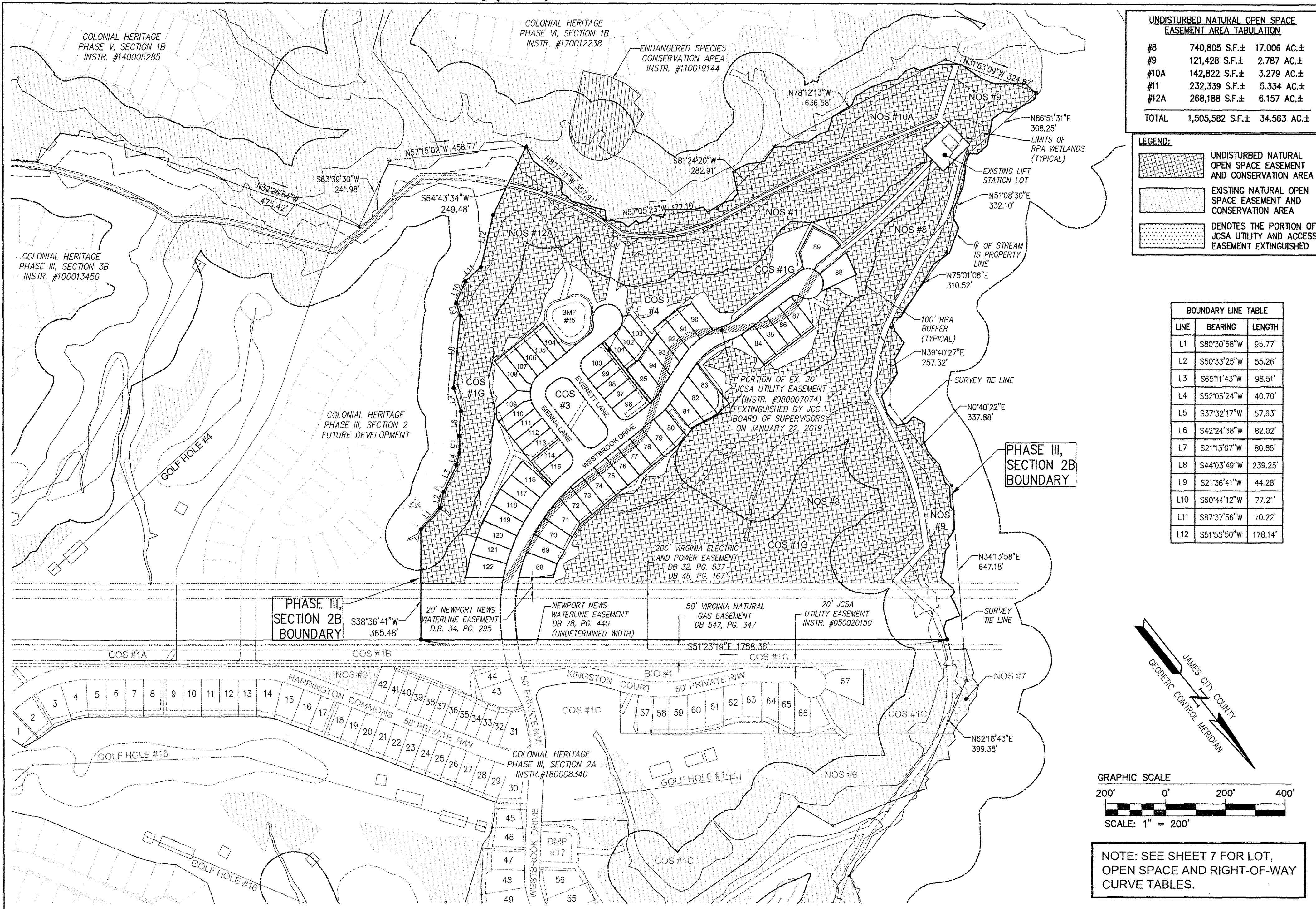


190005297



UNDISTURBED NATURAL OPEN SPACE EASEMENT AREA TABULATION

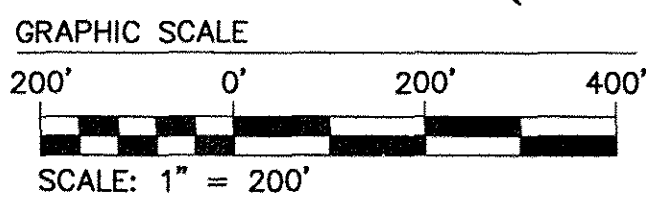
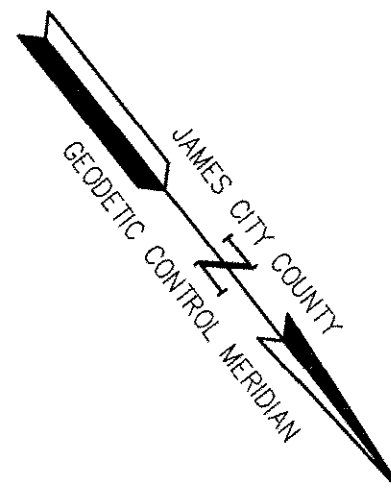
#8	740,805 S.F.±	17,006 AC.±
#9	121,428 S.F.±	2,787 AC.±
#10A	142,822 S.F.±	3,279 AC.±
#11	232,339 S.F.±	5,334 AC.±
#12A	268,188 S.F.±	6,157 AC.±
TOTAL	1,505,582 S.F.±	34,563 AC.±

LEGEND:

- UNDISTURBED NATURAL OPEN SPACE EASEMENT AND CONSERVATION AREA
- EXISTING NATURAL OPEN SPACE EASEMENT AND CONSERVATION AREA
- DENOTES THE PORTION OF JCSA UTILITY AND ACCESS EASEMENT EXTINGUISHED

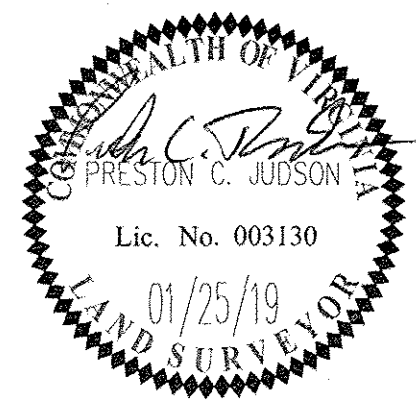
BOUNDARY LINE TABLE

LINE	BEARING	LENGTH
L1	S80°30'58"W	95.77'
L2	S50°33'25"W	55.26'
L3	S65°11'43"W	98.51'
L4	S52°05'24"W	40.70'
L5	S37°32'17"W	57.63'
L6	S42°24'38"W	82.02'
L7	S21°13'07"W	80.85'
L8	S44°03'49"W	239.25'
L9	S21°36'41"W	44.28'
L10	S60°44'12"W	77.21'
L11	S87°37'56"W	70.22'
L12	S51°55'50"W	178.14'



NOTE: SEE SHEET 7 FOR LOT, OPEN SPACE AND RIGHT-OF-WAY CURVE TABLES.

City of Williamsburg & County of James City Circuit Court: This PLAT was recorded on April 11 2019 at 2:45 AM/PM, PB PG Document # 190005297 MONA A. FOLEY, CLERK <i>Mona A. Foley</i> , Clerk		
1	01/25/19	REVISED PER COUNTY COMMENTS DATED 10/20/18
Rev.	Date	Description
		RMS Revised By



Large/Small Plat(s) Recorded
herewith as # **190005297**

AES
CONSULTING ENGINEERS
Hampton Roads | Central Virginia | Middle Peninsula

5248 Olde Towne Road, Suite 1
Williamsburg, Virginia 23188
Phone: (757) 253-0040
Fax: (757) 220-8994
www.aesva.com

REF: JCC S-18-0053

PLAT OF SUBDIVISION
LOTS 68 THRU 122 & COS #1G, #3 AND #4
**COLONIAL HERITAGE
PHASE III - SECTION 2B**
OWNER / DEVELOPER: COLONIAL HERITAGE, LLC

STONEHOUSE DISTRICT | JAMES CITY COUNTY | VIRGINIA

Project Contacts:	PCJ/TRS
Project Number:	8881-32B
Scale:	Date:
1"=200'	08/28/18
Sheet Number	
2 of 11	