

PROJECT MANAGER: *Karolita McKenna, P.E.* (757) 955-3271 (Hampton Roads District)  
 SURVEYED BY: *DATE: Darcy Williams, J.S.* (757) 925-2652 (Hampton Roads District)  
 DESIGN BY: *Mary Rowan, J.S.* (757) 955-3265 (Hampton Roads District)  
 SUBSURFACE UTILITY BY: *DATE: Kazimierz, BQ4* 267-3147

HAMPTON ROADS DISTRICT DESIGN UNIT  
 Utility Owners

Water and Sewer:  
 James City Service Authority  
 Robert Carswell 757-592-1799

Hampton Roads Sewer District  
 757.460.2261

Dominion Virginia Power  
 804-771-3655

Cox Communications  
 757-222-6579 /  
 757-369-6261

Verizon  
 804.772.4409

James City Information  
 757-876-9637

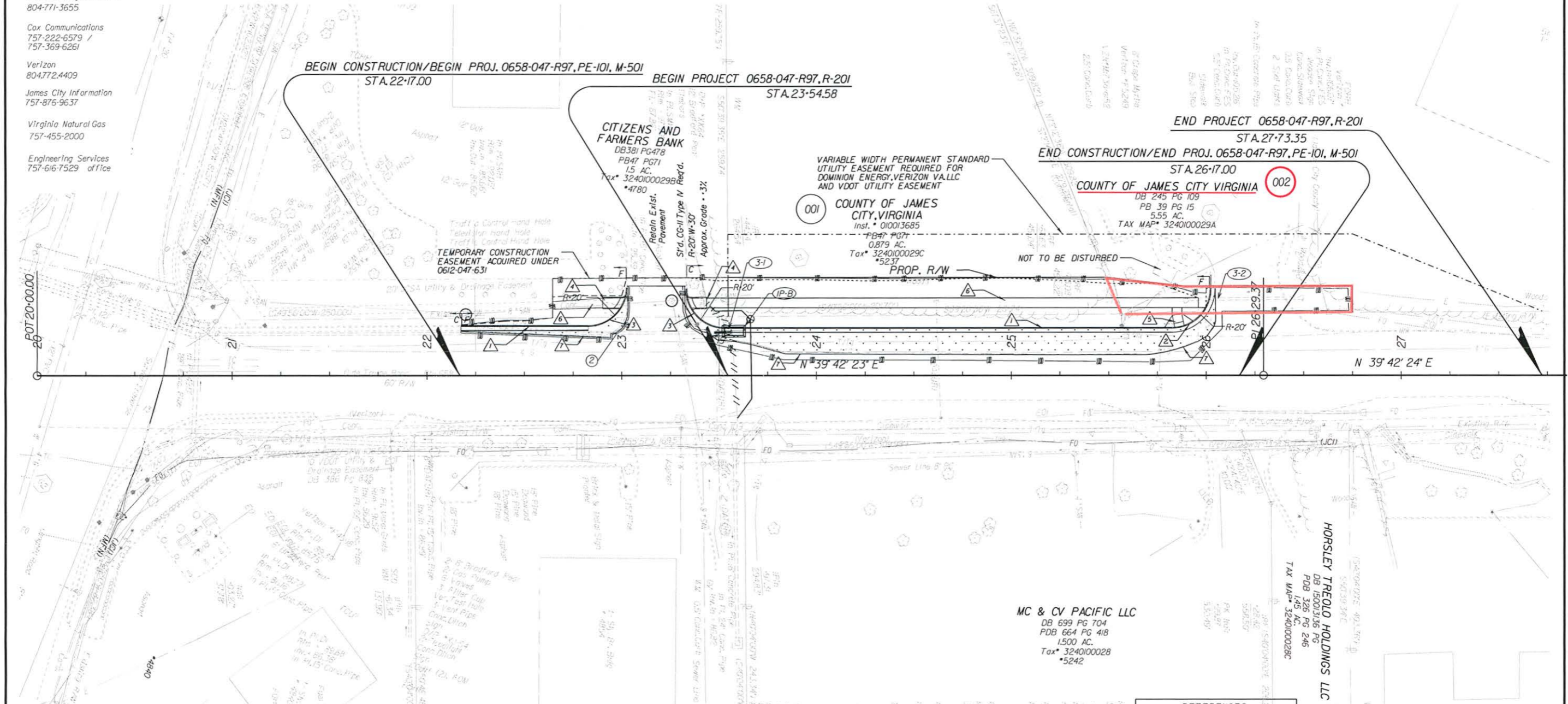
Virginia Natural Gas  
 757-455-2000

Engineering Services  
 757-616-7529 office

REVISED	STATE		SHEET NO.
	ROUTE	PROJECT	
	VA.	658 0658-0047-R97, M-501	3

DESIGN FEATURES RELATING TO CONSTRUCTION OR TO REGULATION AND CONTROL OF TRAFFIC MAY BE SUBJECT TO CHANGE AS DEEMED NECESSARY BY THE DEPARTMENT

VDOT (Division) or Co. Name (Location, Virginia) (TECHNICAL DISCIPLINE)	VDOT (Division) or Co. Name (Location, Virginia) (TECHNICAL DISCIPLINE)
---	---



**LEGEND**

Denotes Drainage Structure Number	ST'D. CG-6 REQ'D.	ST'D. CG-12 TYPE B REQ'D.	SAW-CUT ASPH CONC REQ'D.
Denotes Construction Limits in Cuts	RAD. CG-6 REQ'D.	ST'D. CG-12 TYPE A REQ'D.	CLEAN PIPE OUT
Denotes Construction Limits in Fills	ST'D. CG-2 REQ'D.	HYDRAULIC CEMENT CONC. SIDEWALK REQ'D.	
Denotes Prop. Pavement			
Denotes Limits of Disturbance			

**MC & CV PACIFIC LLC**  
 DB 699 PG 704  
 PDB 664 PG 418  
 1,500 AC.  
 Tax# 3240100028  
 \*5242

**HORSLEY TREFOLO HOLDINGS LLC**  
 DB 1500/3156 PG  
 PDB 326 PG 246  
 145 AC.  
 Tax MAP# 3240100028C

**REFERENCES**  
 (PROFILES, DETAIL & DRAINAGE DESCRIPTION SHEETS, ETC.)

Mainline Profile	3A
Drainage Descr.	3B

THESE PLANS ARE UNFINISHED AND ARE NOT TO BE USED FOR ANY TYPE OF CONSTRUCTION.



PROJECT	SHEET NO.
0658-0047-R97	3