

190002836

SEE SHEET 1  
FOR LOT & R/W  
LINE & CURVE TABLES

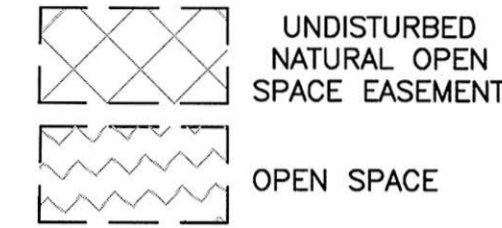
SEE SHEET 3 FOR  
SIX MOUNT ZION ROAD  
LINE & CURVE TABLES

EASEMENT CURVE TABLE

CURVE	RADIUS	ARC	CHORD	CHORD BEARING	DELTA
C39	225.00'	83.88'	83.40'	S 55°11'26" W	21°21'37"
C40	225.00'	21.89'	21.88'	S 41°43'26" W	5°34'23"
C41	225.00'	6.72'	6.72'	S 38°04'54" W	1°42'40"
C42	226.10'	110.87'	109.76'	S 49°23'00" W	28°05'40"

EASEMENT LINE TABLE

LINE	BEARING	DISTANCE
L17	N 51°52'37" W	50.76'
L18	N 39°47'16" E	23.82'
L19	S 49°40'34" E	51.48'
L20	N 88°57'26" W	48.25'



SUBDIVISION OF

**STONEHOUSE TRACT 3  
PARCEL "A" &  
PARCEL "A", SECTION 1**  
LOTS 22 THROUGH 33.  
LOTS 36 THROUGH 41,  
& LOTS 78 THROUGH 86

STONEHOUSE DISTRICT JAMES CITY COUNTY VIRGINIA

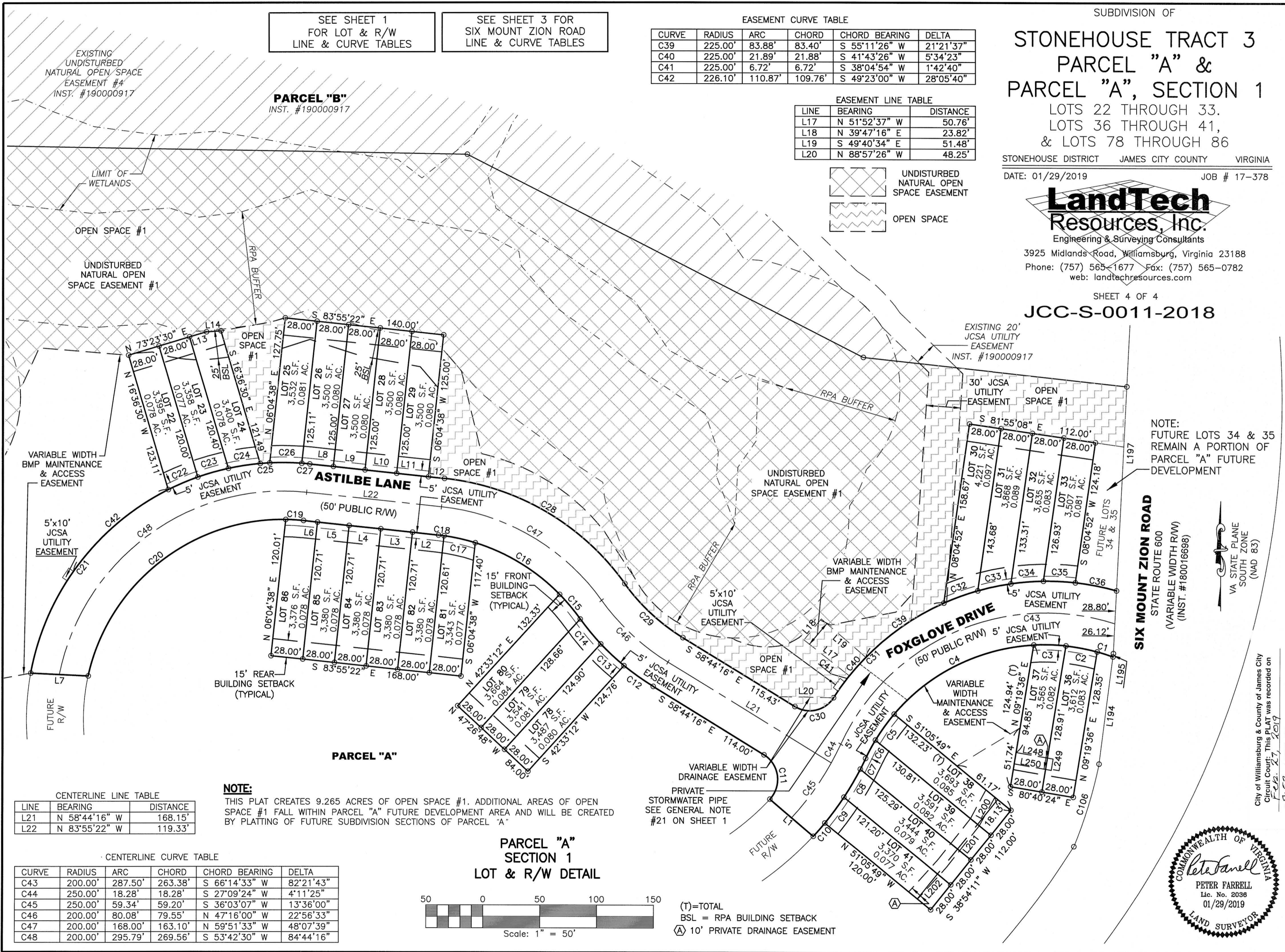
DATE: 01/29/2019 JOB # 17-378



Engineering & Surveying Consultants  
3925 Midlands Road, Williamsburg, Virginia 23188  
Phone: (757) 565-1677 Fax: (757) 565-0782  
web: landtechresources.com

SHEET 4 OF 4

**JCC-S-0011-2018**



NOTE:  
FUTURE LOTS 34 & 35  
REMAIN A PORTION OF  
PARCEL "A" FUTURE  
DEVELOPMENT

**SIX MOUNT ZION ROAD**  
STATE ROUTE 600  
(VARIABLE WIDTH R/W)  
(INST. #180016698)

VA STATE PLANE  
SOUTH ZONE  
(NAD 83)

**NOTE:**  
THIS PLAT CREATES 9.265 ACRES OF OPEN SPACE #1. ADDITIONAL AREAS OF OPEN SPACE #1 FALL WITHIN PARCEL "A" FUTURE DEVELOPMENT AREA AND WILL BE CREATED BY PLATTING OF FUTURE SUBDIVISION SECTIONS OF PARCEL "A"

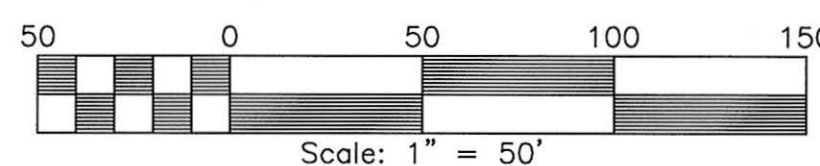
CENTERLINE LINE TABLE

LINE	BEARING	DISTANCE
L21	N 58°44'16" W	168.15'
L22	N 83°55'22" W	119.33'

CENTERLINE CURVE TABLE

CURVE	RADIUS	ARC	CHORD	CHORD BEARING	DELTA
C43	200.00'	287.50'	263.38'	S 66°14'33" W	82°21'43"
C44	250.00'	18.28'	18.28'	S 27°09'24" W	4°11'25"
C45	250.00'	59.34'	59.20'	S 36°03'07" W	13°36'00"
C46	200.00'	80.08'	79.55'	N 47°16'00" W	22°56'33"
C47	200.00'	168.00'	163.10'	N 59°51'33" W	48°07'39"
C48	200.00'	295.79'	269.56'	S 53°42'30" W	84°44'16"

**PARCEL "A"  
SECTION 1  
LOT & R/W DETAIL**



(T)=TOTAL  
BSL = RPA BUILDING SETBACK  
(A) 10' PRIVATE DRAINAGE EASEMENT

4 Large/Small Plat(s) Recorded  
herewith as # 190002836

City of Williamsburg & County of James City  
Circuit Court: This PLAT was recorded on  
Feb. 27, 2019  
at 8:53 AM/PM PB PG  
Document # 190002836  
MONA A. FOLEY, CLERK

