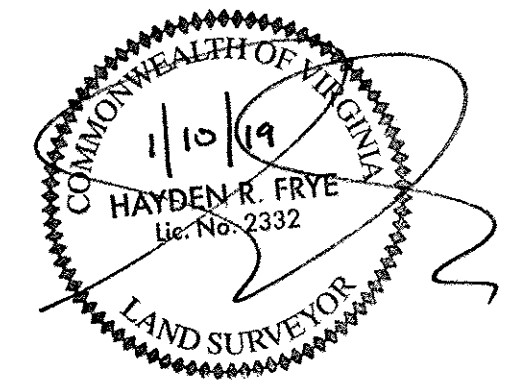


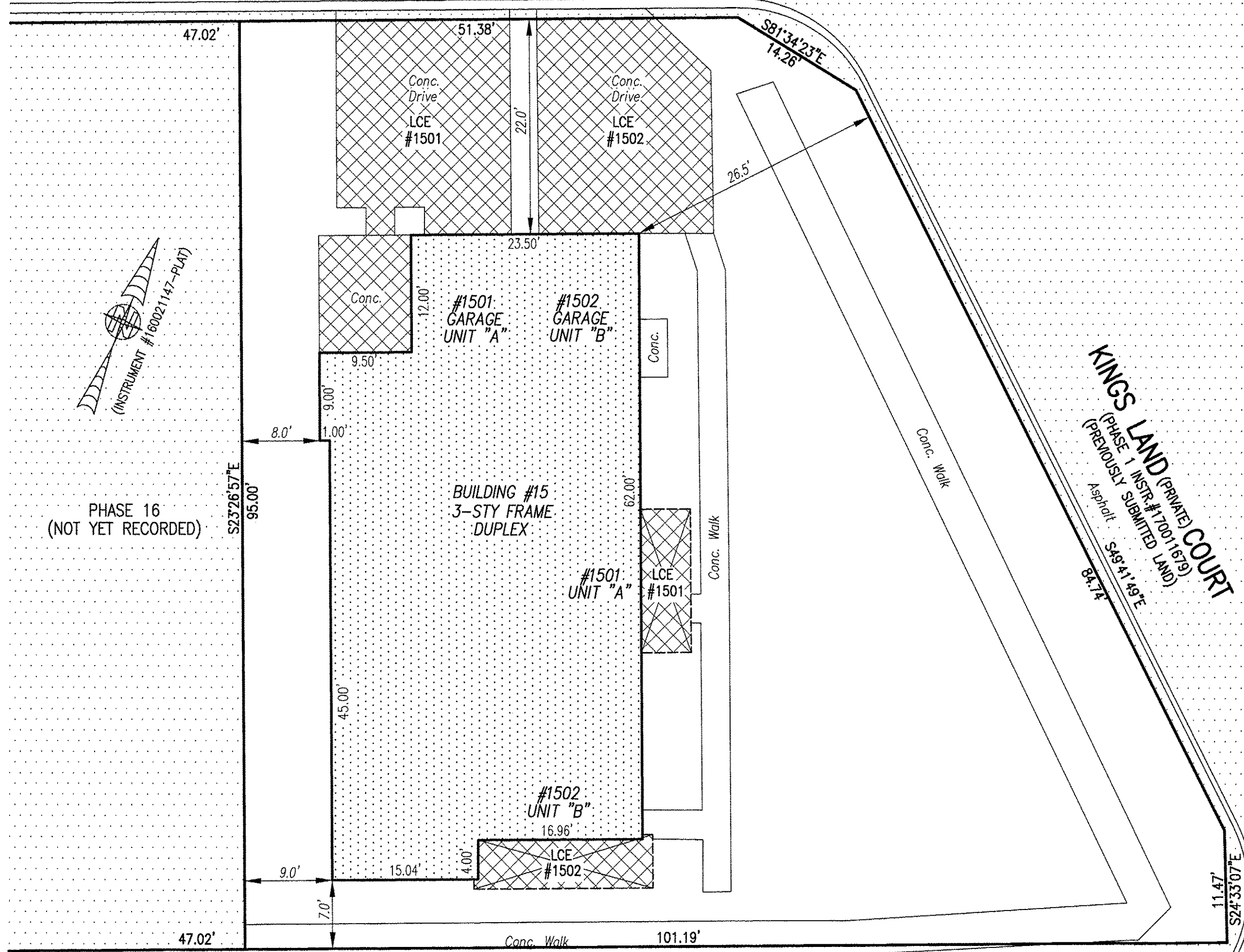
190001143

I HEREBY CERTIFY THAT THIS PLAT IS ACCURATE AND THAT IT COMPLIES WITH THE PROVISIONS OF THE CODE OF VIRGINIA OF 1950 AS AMENDED, § 55-79.58 AND I FURTHER CERTIFY THAT ALL IMPROVEMENTS THEREOF DEPICTED HEREON, PURSUANT TO THE CODE OF VIRGINIA § 55-79.58A, ARE SUBSTANTIALLY COMPLETE.



**FARRINGSON (PRIVATE) WAY**

(FORMERLY ALLY "A")  
 (PHASE 1 INSTR.#170011679)  
 (PREVIOUSLY SUBMITTED LAND)  
 Asphalt  
 N66°33'03"E 390.42' (O/A)



- INDICATES PREVIOUSLY SUBMITTED LAND
- INDICATES BUILDING AREA (SEE PLANS FOR UNIT DIMENSIONS)
- INDICATES LIMITED COMMON ELEMENT (LCE) ASSIGNED TO A UNIT # UNIT ASSIGNED
- INDICATES COMMON ELEMENT (EXCLUDING AREAS OUTSIDE SUBMITTED LAND)
- INDICATES ADDITIONAL LAND

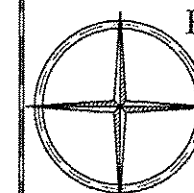
5 Large/~~Small~~ Plat(s) Recorded  
 herewith as # 190001143

City of Williamsburg & County of James City  
 Circuit Court: This PLAT was recorded on  
Jan 20, 2019  
 at 3:30 AM/PM, PB      PG       
 Document # 190001143  
 MONA A. FOLEY, CLERK  
*Mona A. Foley* *MS, DC*, Clerk

THIS SHEET: BUILDING DETAIL

**PHASE 15**  
**CONDOMINIUM PLAT AND PLAN**  
 OF  
**THE PROMENADE**  
 AT  
**JOHN TYLER**  
 A CONDOMINIUM  
 JAMES CITY COUNTY, VIRGINIA

Jo# 160921



Hayden Frye and Associates, Inc.  
**Land Surveyors**

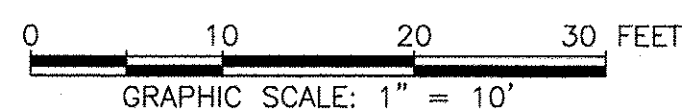
333 KELLAM ROAD, SUITE 200  
 VIRGINIA BEACH, VA., 23462  
 PH: (757) 491-7228 FX:(757) 491-7229

DATE: JANUARY 10, 2019

SCALE: 1"=10'

SHEET 3 OF 5 THIS PHASE

JCC Subdivision Agent *EG*  
 Approval Not Required



S66°33'03"W 450.73' (O/A)  
 Asphalt  
**PROMENADE (PRIVATE) LANE**  
 (PHASE 1 INSTR.#170011679)  
 (PREVIOUSLY SUBMITTED LAND)