

190000917

LINE	BEARING	DISTANCE
L1	N 88°37'54" W	50.00'
L2	N 88°37'54" W	51.00'
L3	N 88°37'54" W	51.00'
L4	N 88°37'54" W	51.00'
L5	N 88°37'54" W	16.85'
L6	N 75°26'58" W	56.01'
L7	N 75°26'58" W	55.64'
L8	S 73°50'29" W	58.86'
L9	S 74°33'40" E	46.03'
L10	S 74°33'40" E	55.98'
L11	S 88°37'54" E	16.85'
L12	S 88°37'54" E	51.00'
L13	S 88°37'54" E	51.00'
L14	S 88°37'54" E	29.26'
L15	N 72°51'51" W	50.00'

CURVE	RADIUS	ARC	CHORD	CHORD BEARING	DELTA
C19	658.44'	35.67'	35.66'	N 87°00'03" W	3°06'14"
C20	658.44'	69.54'	69.51'	N 82°25'24" W	6°03'04"
C21	658.44'	56.49'	56.47'	N 76°56'24" W	4°54'57"
C22	58.00'	37.13'	36.50'	S 09°41'19" W	36°40'50"
C23	58.00'	36.48'	35.88'	S 26°40'18" E	36°02'24"
C24	58.00'	37.02'	36.40'	S 62°58'43" E	36°34'27"
C25	58.00'	46.82'	45.56'	N 75°36'29" E	46°15'10"
C26	25.60'	13.80'	13.63'	N 68°35'28" E	30°53'31"
C27	25.60'	9.86'	9.80'	S 84°55'50" E	22°03'52"
C28	525.00'	47.53'	47.52'	S 77°09'18" E	5°11'16"

CURVE	RADIUS	ARC	CHORD	CHORD BEARING	DELTA
C29	525.00'	47.22'	47.21'	S 82°19'33" E	5°09'14"
C30	525.00'	34.17'	34.16'	S 86°46'02" E	3°43'45"
C31	290.00'	21.76'	21.76'	S 86°28'55" E	4°17'58"
C32	290.00'	97.18'	96.72'	S 74°43'56" E	19°11'59"
C35	58.00'	131.97'	105.29'	N 86°47'15" W	130°22'02"
C36	25.00'	23.11'	22.29'	N 48°04'57" W	52°57'26"
C37	475.00'	116.65'	116.36'	N 81°35'47" W	14°04'14"
C38	340.00'	46.69'	46.65'	N 84°41'52" W	7°52'04"
C39	25.00'	35.85'	32.85'	S 58°09'35" W	82°09'09"
C40	25.00'	35.82'	32.84'	N 23°58'01" W	82°06'00"
C50	475.00'	4.16'	4.16'	S 88°22'50" E	0°30'07"
C51	475.00'	72.93'	72.85'	S 83°43'53" E	8°47'47"
C52	475.00'	39.55'	39.55'	S 76°56'50" E	4°46'19"
C53	25.00'	9.52'	9.47'	S 63°38'48" E	21°49'44"
C54	25.00'	13.59'	13.42'	S 37°10'05" E	31°07'43"

LINE	BEARING	DISTANCE
E1	S 24°52'03" W	18.19'
E2	N 01°18'35" E	16.79'
E3	S 88°34'31" E	108.27'

SUBDIVISION OF
STONEHOUSE TRACT 3
CREATING
**PARCEL "B" &
PARCEL "B" SECTION 1**
LOTS 2 THROUGH 27
STONEHOUSE DISTRICT JAMES CITY COUNTY VIRGINIA
DATE: 12/12/2018 JOB # 17-378

LandTech Resources, Inc.
Engineering & Surveying Consultants

3925 Midlands Road, Williamsburg, Virginia 23188
Phone: (757) 565-1677 Fax: (757) 565-0782
web: landtechresources.com

SHEET 6 OF 7

JCC-S-0004-2017

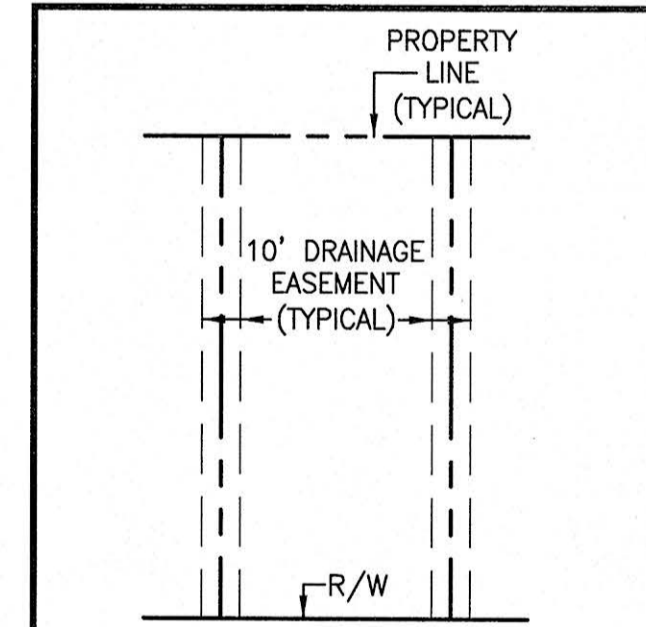
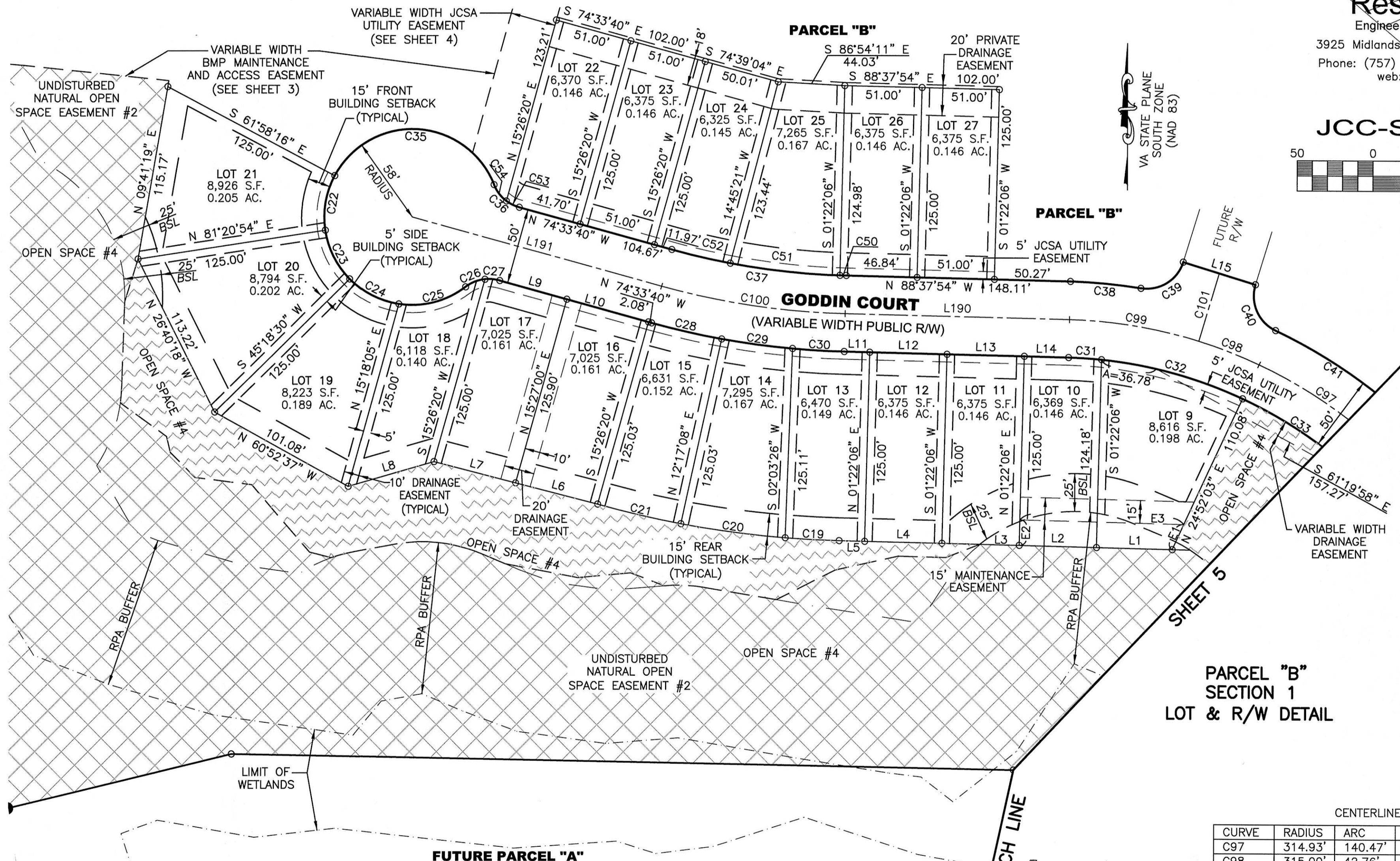
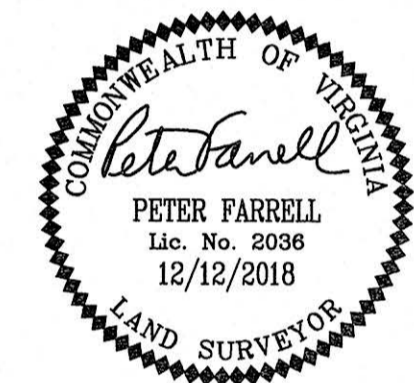
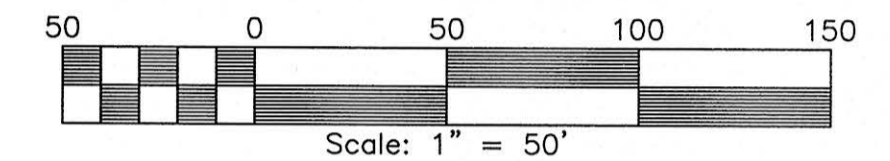
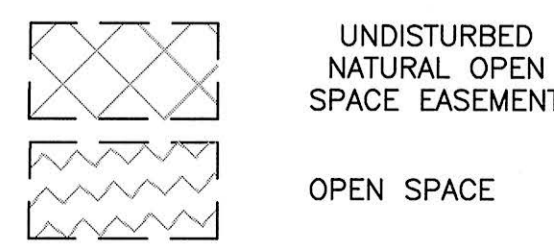


EXHIBIT
LOT LINE DRAINAGE EASEMENTS
FOR ALL LOTS, EACH SHARED LOT LINE SHALL INCLUDE A 10' DRAINAGE EASEMENT CENTERED ON THE PROPERTY LINE.

CURVE	RADIUS	ARC	CHORD	CHORD BEARING	DELTA
C97	314.93'	140.47'	139.31'	N 52°17'35" W	25°33'20"
C98	315.00'	42.76'	42.72'	N 68°57'31" W	7°46'38"
C99	315.00'	86.78'	86.51'	N 80°44'22" W	15°47'04"
C100	500.00'	122.79'	122.48'	N 81°35'47" W	14°04'14"
C101	5015.00'	46.56'	46.56'	N 16°49'02" E	0°31'55"

LINE	BEARING	DISTANCE
L190	N 88°37'54" W	148.11'
L191	N 74°33'40" W	170.92'

NOTE:
THIS PLAT CREATES 29.392 ACRES OF OPEN SPACE #4. ADDITIONAL AREAS OF OPEN SPACE #4 FALL WITHIN PARCEL "B" FUTURE DEVELOPMENT AREA AND WILL BE CREATED BY PLATTING OF FUTURE SUBDIVISION SECTIONS OF PARCEL "B"



City of Williamsburg & County of James City
Circuit Court: This PLAT was recorded on
22 January 2019
at 2:42 AM/PM, PB PG
Document # 190000917
MONA A. FOLEY, CLERK
Mona A. Foley, Clerk