

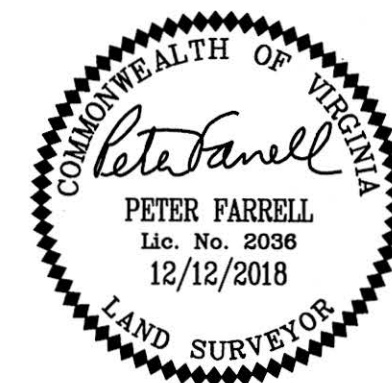
190000917

LINE	BEARING	DISTANCE
L16	N 61°36'13" W	50.00'
L17	N 28°23'47" E	40.36'
L18	S 73°53'01" E	46.55'
L68	S 79°56'25" E	6.77'
L69	S 79°56'25" E	11.53'
L70	N 28°23'47" E	15.98'
L71	N 79°56'25" W	15.53'

CURVE	RADIUS	ARC	CHORD	CHORD BEARING	DELTA
C94	465.88'	209.78'	208.01'	N 71°09'40" W	25°47'57"
C95	480.64'	47.35'	47.33'	N 55°47'49" W	5°38'38"
C96	480.64'	115.83'	115.55'	N 46°04'16" W	13°48'28"
C97	314.93'	140.47'	139.31'	N 52°17'35" W	25°33'20"

CURVE	RADIUS	ARC	CHORD	CHORD BEARING	DELTA
C1	638.00'	57.44'	57.42'	N 81°18'49" W	5°09'30"
C2	638.00'	62.22'	62.20'	N 75°56'26" W	5°35'16"
C3	638.00'	62.21'	62.19'	N 70°21'11" W	5°35'13"
C4	638.00'	62.19'	62.17'	N 64°46'02" W	5°35'06"
C5	638.00'	62.82'	62.79'	N 59°09'14" W	5°38'29"
C6	638.00'	62.17'	62.15'	N 53°32'29" W	5°35'01"
C7	638.00'	61.50'	61.47'	N 47°59'18" W	5°31'22"
C8	638.00'	60.67'	60.65'	N 42°30'09" W	5°26'55"
C9	502.46'	49.70'	49.68'	S 42°03'21" E	5°40'03"
C10	502.46'	49.61'	49.59'	S 47°43'06" E	5°39'26"
C11	502.46'	49.95'	49.93'	S 53°23'42" E	5°41'45"
C12	502.46'	49.85'	49.83'	S 59°05'07" E	5°41'05"
C13	502.46'	50.35'	50.33'	S 64°47'54" E	5°44'30"
C14	502.46'	50.36'	50.34'	S 70°32'26" E	5°44'34"
C15	502.46'	43.58'	43.56'	S 75°53'48" E	4°58'09"
C17	528.00'	27.36'	27.35'	S 81°25'29" E	2°58'07"
C18	34.00'	6.78'	6.77'	S 77°42'27" E	11°25'20"
C33	290.00'	131.40'	130.28'	S 52°09'05" E	25°57'43"
C34	502.46'	4.54'	4.54'	S 38°57'47" E	0°31'05"
C41	340.00'	149.53'	148.33'	N 52°25'03" W	25°11'57"
C42	475.00'	49.41'	49.39'	N 42°47'52" W	5°57'35"
C43	25.00'	46.18'	39.89'	S 81°18'34" W	105°49'34"
C44	25.00'	38.01'	34.45'	N 15°09'17" W	87°06'09"
C45	474.50'	24.41'	24.40'	N 60°10'46" W	2°56'49"
C46	425.00'	77.30'	77.19'	N 66°51'49" W	10°25'16"
C47	425.00'	58.35'	58.30'	N 76°00'26" W	7°51'59"
C48	472.00'	4.72'	4.72'	N 80°13'37" W	0°34'23"
C49	34.00'	15.71'	15.57'	N 86°15'10" E	26°28'04"

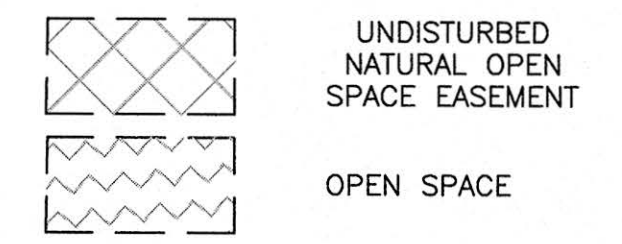
LINE	BEARING	DISTANCE
L189	N 28°23'47" E	62.91'



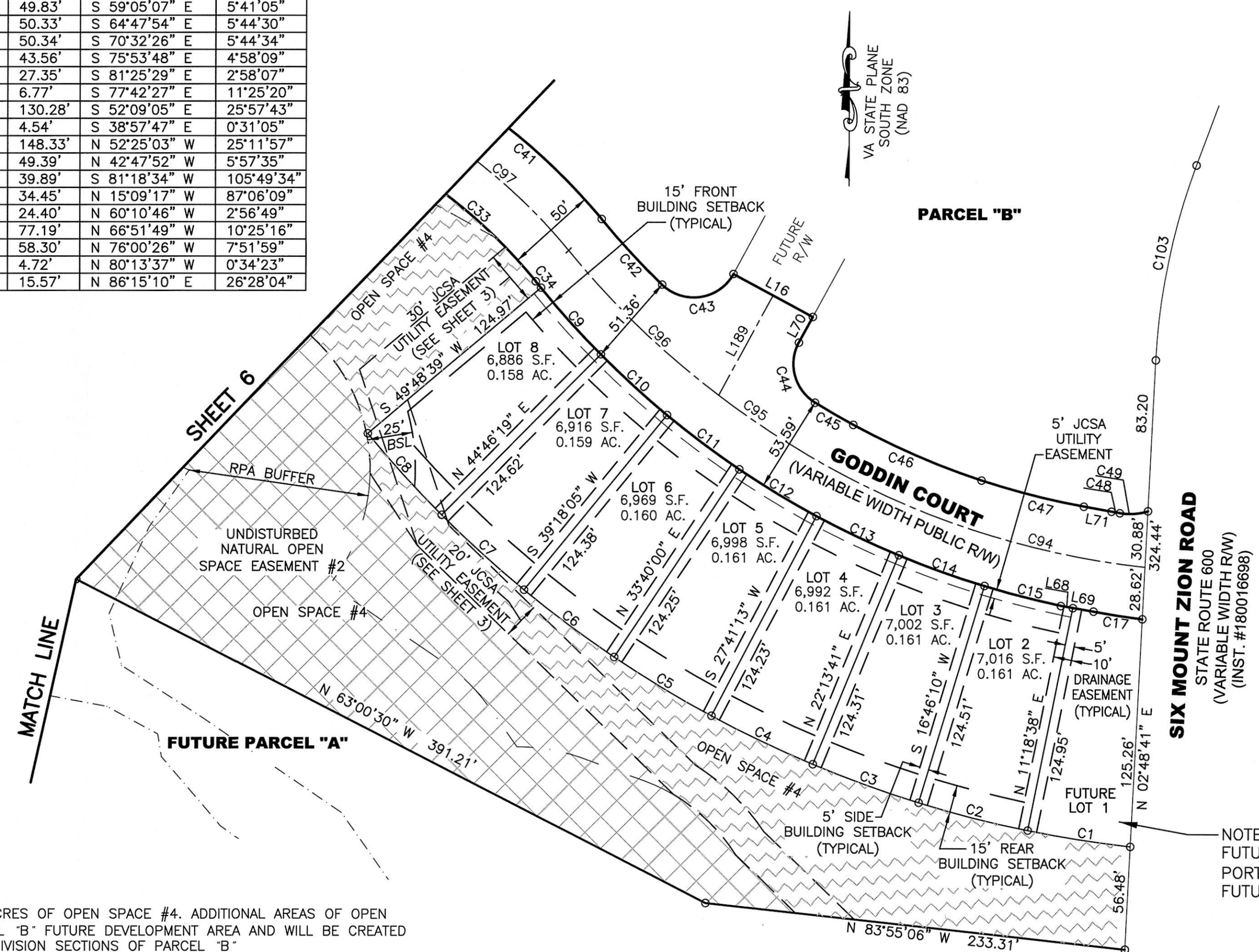
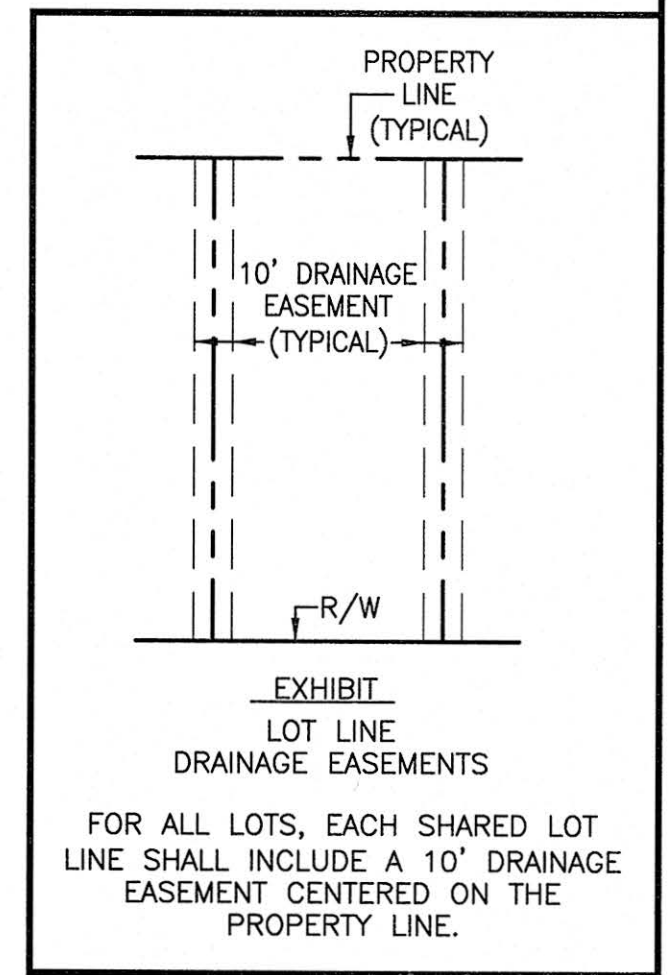
SUBDIVISION OF
STONEHOUSE TRACT 3
CREATING
**PARCEL "B" &
PARCEL "B" SECTION 1**
LOTS 2 THROUGH 27
STONEHOUSE DISTRICT JAMES CITY COUNTY VIRGINIA
DATE: 12/12/2018 JOB # 17-378

LandTech Resources, Inc.
Engineering & Surveying Consultants
3925 Midlands Road, Williamsburg, Virginia 23188
Phone: (757) 565-1677 Fax: (757) 565-0782
web: landtechresources.com

SHEET 5 OF 7
JCC-S-0004-2017

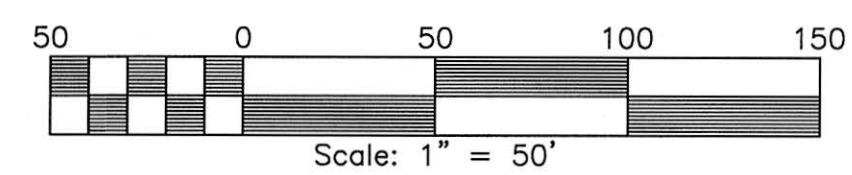


SEE SHEET 7 FOR SIX MOUNT ZION ROAD R/W LINE & CURVE TABLES



NOTE: FUTURE LOT 1 REMAINS A PORTION OF PARCEL "B" FUTURE DEVELOPMENT

NOTE:
THIS PLAT CREATES 29.392 ACRES OF OPEN SPACE #4. ADDITIONAL AREAS OF OPEN SPACE #4 FALL WITHIN PARCEL "B" FUTURE DEVELOPMENT AREA AND WILL BE CREATED BY PLATTING OF FUTURE SUBDIVISION SECTIONS OF PARCEL "B"



**PARCEL "B"
SECTION 1
LOT & R/W DETAIL**

7 Large/Small Plat(s) Recorded
herewith as # 190000917

City of Williamsburg & County of James City
Circuit Court: This PLAT was recorded on
22 January 2019
at 2:42 AM/PM, PB PG
Document # 190000917
MONA A. FOLEY, CLERK
Mona A. Foley, Clerk