

190000917

SUBDIVISION OF
STONEHOUSE TRACT 3
CREATING
**PARCEL "B" &
PARCEL "B" SECTION 1**
LOTS 2 THROUGH 27

STONEHOUSE DISTRICT JAMES CITY COUNTY VIRGINIA
DATE: 12/12/2018 JOB # 17-378



LandTech Resources, Inc.
Engineering & Surveying Consultants
3925 Midlands Road, Williamsburg, Virginia 23188
Phone: (757) 565-1677 Fax: (757) 565-0782
web: landtechresources.com

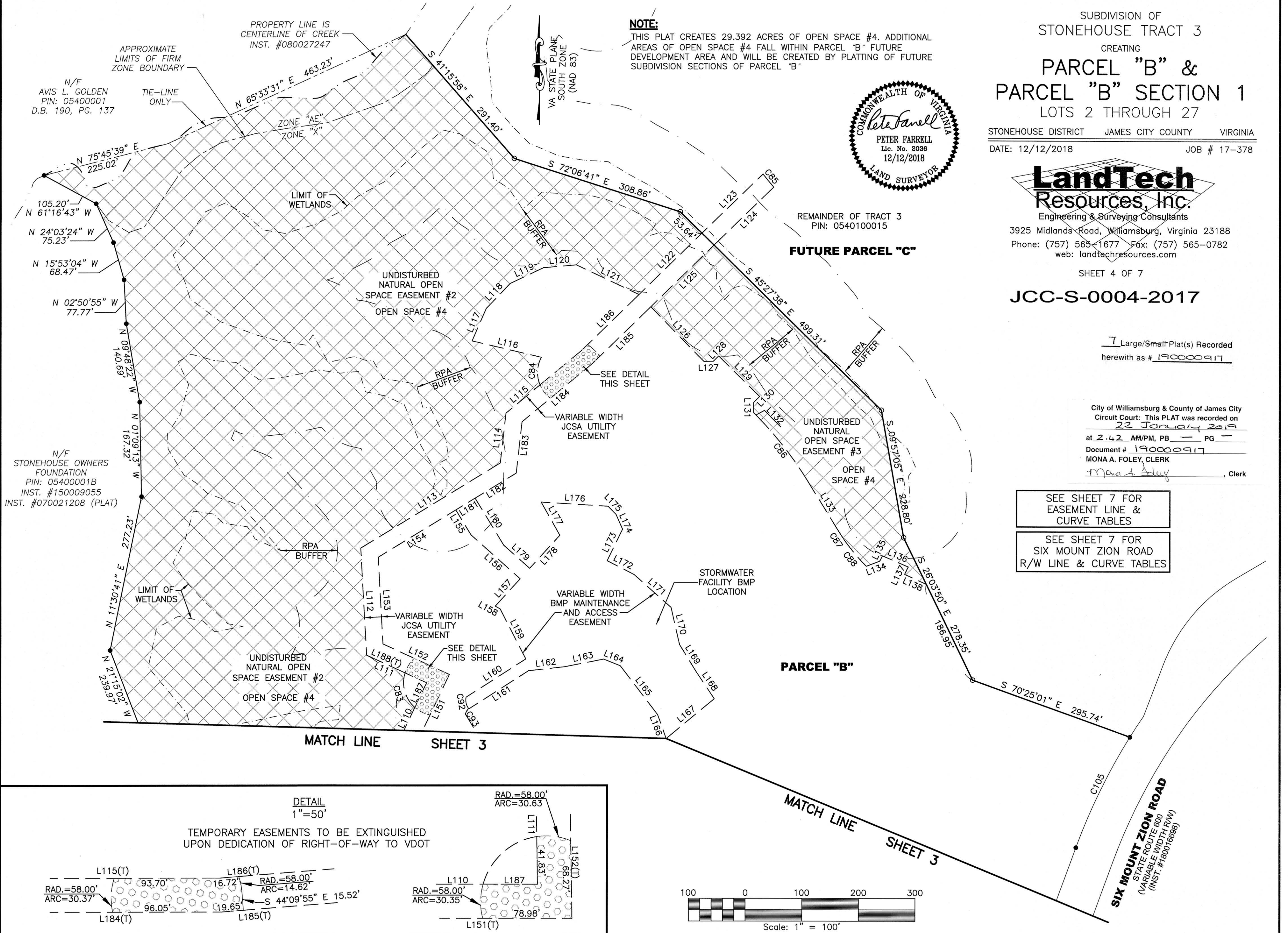
SHEET 4 OF 7
JCC-S-0004-2017

7 Large/Small Plat(s) Recorded
herewith as # 190000917

City of Williamsburg & County of James City
Circuit Court: This PLAT was recorded on
22 January 2019
at 2:42 AM/PM, PB PG 1
Document # 190000917
MONA A. FOLEY, CLERK
Mona A. Foley, Clerk

SEE SHEET 7 FOR
EASEMENT LINE &
CURVE TABLES
SEE SHEET 7 FOR
SIX MOUNT ZION ROAD
R/W LINE & CURVE TABLES

NOTE:
THIS PLAT CREATES 29.392 ACRES OF OPEN SPACE #4. ADDITIONAL
AREAS OF OPEN SPACE #4 FALL WITHIN PARCEL "B" FUTURE
DEVELOPMENT AREA AND WILL BE CREATED BY PLATTING OF FUTURE
SUBDIVISION SECTIONS OF PARCEL "B"



N/F
AVIS L. GOLDEN
PIN: 05400001
D.B. 190, PG. 137

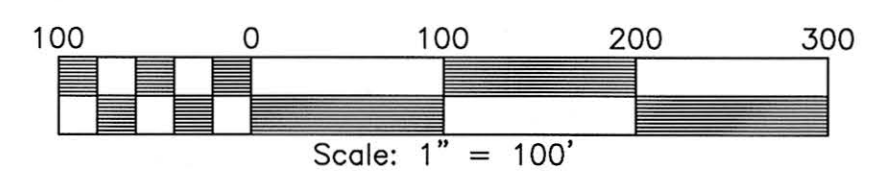
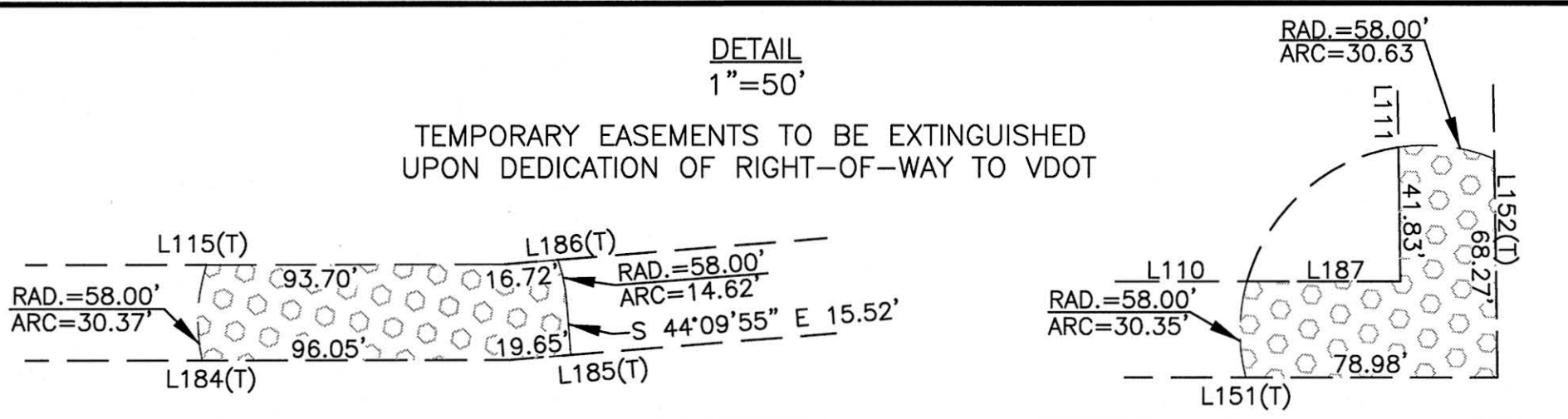
N/F
STONEHOUSE OWNERS
FOUNDATION
PIN: 05400001B
INST. #150009055
INST. #070021208 (PLAT)

MATCH LINE SHEET 3

MATCH LINE SHEET 3

DETAIL
1"=50'

TEMPORARY EASEMENTS TO BE EXTINGUISHED
UPON DEDICATION OF RIGHT-OF-WAY TO VDOT



SIX MOUNT ZION ROAD
STATE ROUTE 600
(VARIABLE WIDTH R/W)
(INST. #180016898)