

190000917

NOTE:

THIS PLAT CREATES 29.392 ACRES OF OPEN SPACE #4. ADDITIONAL AREAS OF OPEN SPACE #4 FALL WITHIN PARCEL "B" FUTURE DEVELOPMENT AREA AND WILL BE CREATED BY PLATTING OF FUTURE SUBDIVISION SECTIONS OF PARCEL "B"

SUBDIVISION OF
STONEHOUSE TRACT 3

CREATING

PARCEL "B"
& PARCEL "B" SECTION 1

LOTS 2 THROUGH 27

STONEHOUSE DISTRICT JAMES CITY COUNTY VIRGINIA

DATE: 12/12/2018

JOB # 17-378



LandTech
Resources, Inc.

Engineering & Surveying Consultants

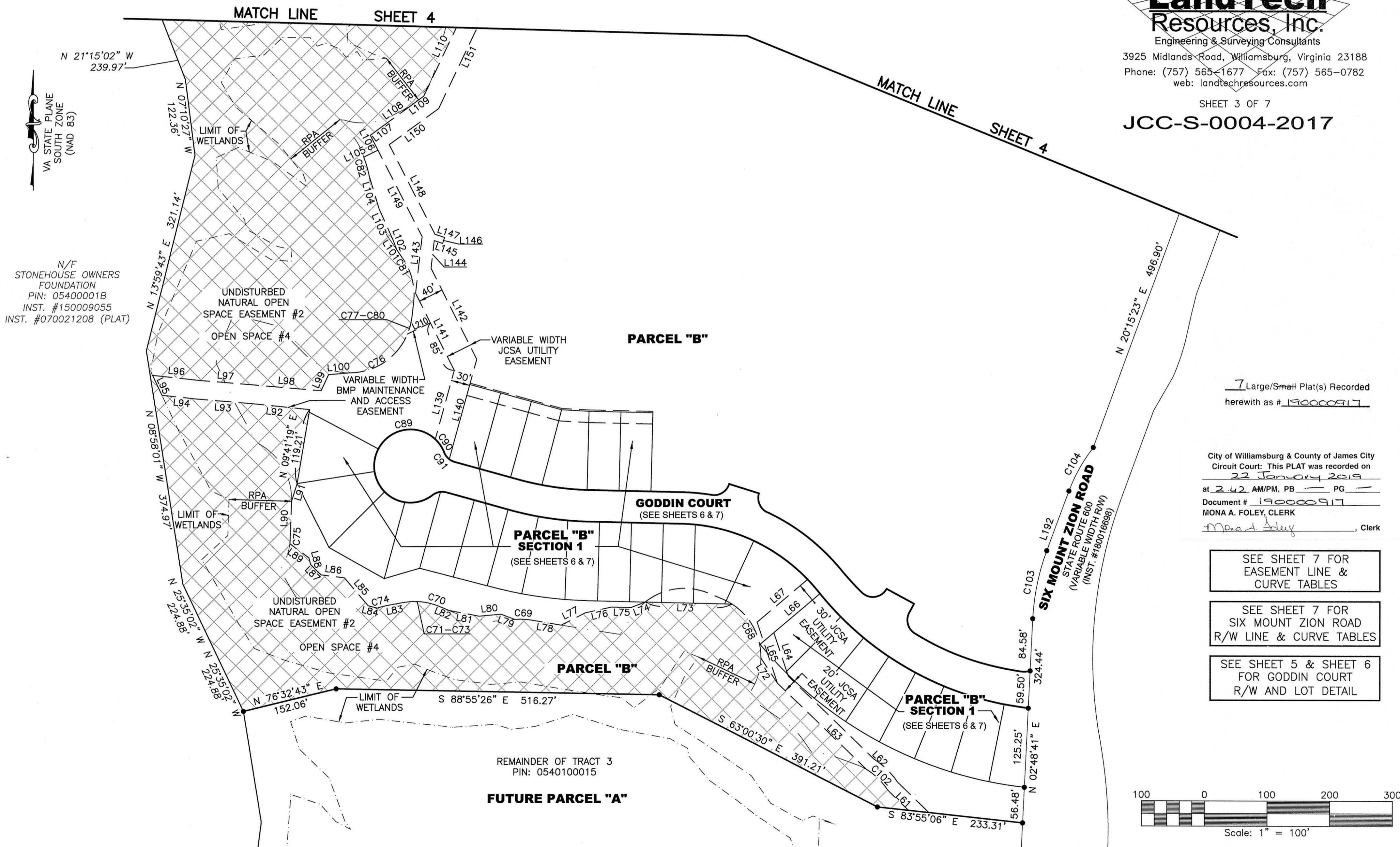
3925 Midlands Road, Williamsburg, Virginia 23188

Phone: (757) 565-1677 Fax: (757) 565-0782

web: landtechresources.com

SHEET 3 OF 7

JCC-S-0004-2017



N/F
STONEHOUSE OWNERS
FOUNDATION
PIN: 05400001B
INST. #150009055
INST. #070021208 (PLAT)

7 Large/Small Plat(s) Recorded
herewith as # 190000917

City of Williamsburg & County of James City
Circuit Court: This PLAT was recorded on
22 January 2019
at 2:42 AM/PM, PB PG
Document # 190000917
MONA A. FOLEY, CLERK
Mona A. Foley, Clerk

SEE SHEET 7 FOR
EASEMENT LINE &
CURVE TABLES

SEE SHEET 7 FOR
SIX MOUNT ZION ROAD
R/W LINE & CURVE TABLES

SEE SHEET 5 & SHEET 6
FOR GODDIN COURT
R/W AND LOT DETAIL

