

City of Williamsburg & County of James City
Circuit Court: This PLAT was recorded on
Sept. 10, 2018
at 3:51 AM/PM, PB PG
Document # 184940
MONA A. FOLEY, CLERK
Mona A. Foley
Clerk

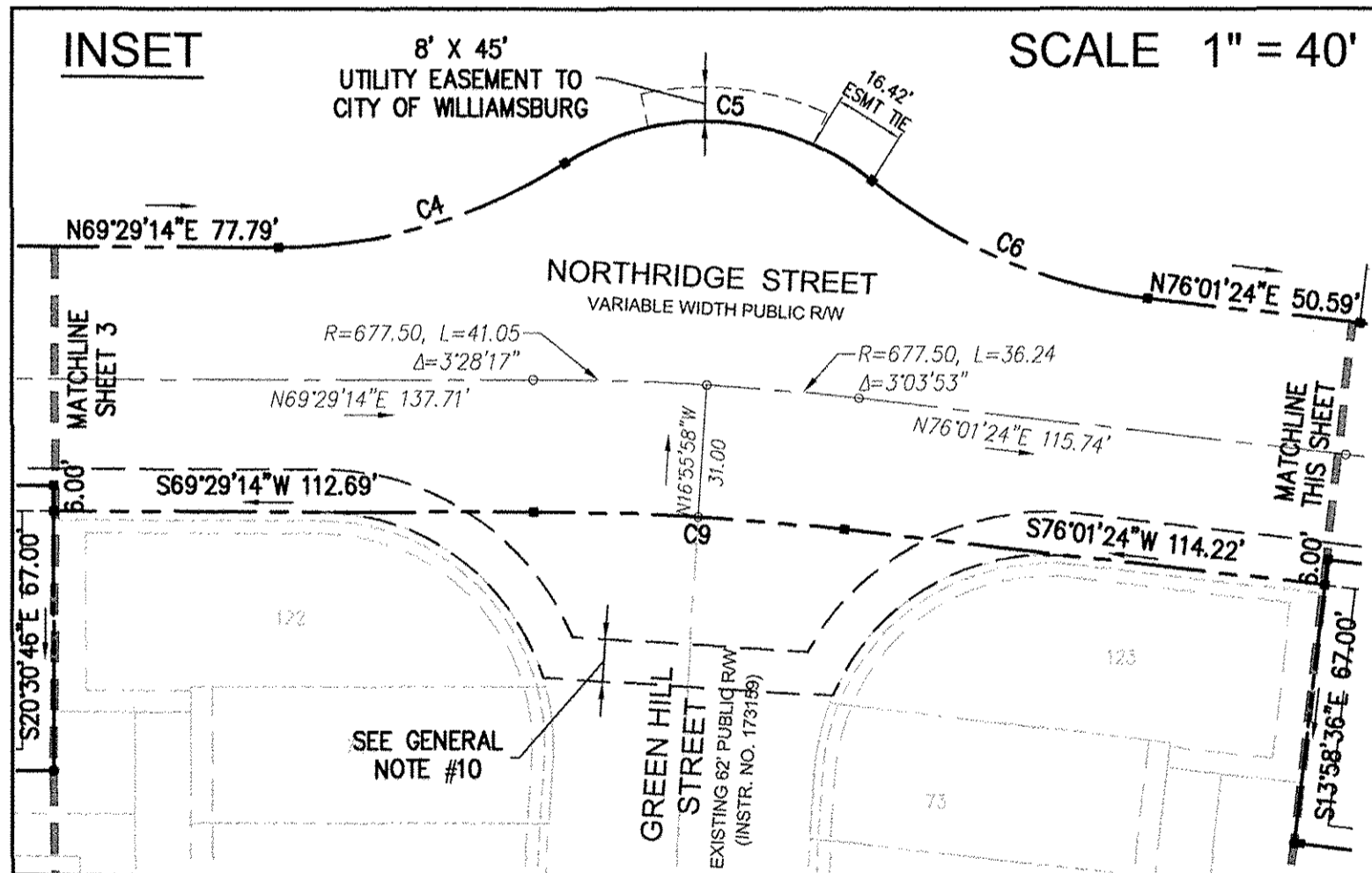


5248 Old Towne Road, Suite 1
Williamsburg, Virginia 23168
Phone: (757) 265-0040
Fax: (757) 220-8994
www.aesva.com

AES
CONSULTING ENGINEERS
Hampton Roads | Central Virginia | Middle Peninsula

PLAT OF SUBDIVISION
**VILLAGE GREEN NORTH
TOWNHOMES AT QUARTERPATH
PHASE 3**
BEING THE PROPERTY OF
QUARTERPATH WILLIAMSBURG, LLC
CITY OF WILLIAMSBURG VIRGINIA

Project Contacts: PCJ/GVC
Project Number: W10219-01 (3)
Scale: 1"=30' Date: 02/23/18
Sheet Number
4 OF 4



CURVE #	DELTA	RADIUS	LENGTH	TANGENT	CHORD	CHORD BEARING
C4	32°41'53"	125.00'	71.34'	36.67'	70.37'	N53°08'18"E
C5	72°05'14"	61.85'	77.82'	45.01'	72.79'	S72°49'58"W
C6	32°51'12"	125.00'	71.67'	36.85'	70.70'	S87°33'00"E
C7	13°54'23"	1743.50'	423.17'	212.63'	422.13'	S82°58'35"W
C8	13°57'27"	1687.55'	411.09'	206.57'	410.08'	S82°57'03"W
C9	6°32'09"	646.50'	73.75'	36.91'	73.71'	S72°45'19"W
C17	13°54'23"	1620.50'	393.32'	197.63'	392.35'	S82°58'35"W
C21	1°06'03"	1687.55'	32.42'	16.21'	32.42'	S89°22'45"W
C22	1°35'37"	1687.55'	46.94'	23.47'	46.94'	S88°01'55"W
C23	1°11'19"	1687.55'	35.01'	17.50'	35.01'	S86°38'27"W
C24	1°11'18"	1687.55'	35.00'	17.50'	35.00'	S85°27'09"W
C25	1°11'19"	1687.55'	35.01'	17.51'	35.01'	S84°15'50"W

CURVE #	DELTA	RADIUS	LENGTH	TANGENT	CHORD	CHORD BEARING
C26	1°53'08"	1687.55'	55.54'	27.77'	55.54'	S82°43'37"W
C27	1°49'00"	1687.55'	53.51'	26.76'	53.50'	S80°52'33"W
C28	1°11'18"	1687.55'	35.00'	17.50'	35.00'	S79°22'24"W
C29	1°11'19"	1687.55'	35.01'	17.50'	35.01'	S78°11'05"W
C30	1°37'06"	1687.55'	47.66'	23.83'	47.66'	S76°46'53"W
C59	1°06'03"	1620.50'	31.13'	15.57'	31.13'	S89°22'46"W
C60	1°31'27"	1620.50'	43.11'	21.56'	43.11'	S88°04'01"W
C61	1°14'16"	1620.50'	35.01'	17.50'	35.01'	S86°41'09"W
C62	1°14'15"	1620.50'	35.00'	17.50'	35.00'	S85°26'53"W
C63	1°14'16"	1620.50'	35.01'	17.51'	35.01'	S84°12'38"W
C64	1°48'28"	1620.50'	51.13'	25.57'	51.12'	S82°41'16"W
C65	1°47'15"	1620.50'	50.55'	25.28'	50.55'	S80°53'25"W

CURVE #	DELTA	RADIUS	LENGTH	TANGENT	CHORD	CHORD BEARING
C66	1°14'15"	1620.50'	35.00'	17.50'	35.00'	S79°22'40"W
C67	1°14'16"	1620.50'	35.01'	17.50'	35.01'	S78°08'25"W
C68	1°29'53"	1620.50'	42.37'	21.19'	42.37'	S76°46'20"W

4 Large/Small Plat(s) Recorded
herewith as # 184940

NOTE:
THIS PLAT REFERS TO
LOTS 99-121, 124-136

S:\DSS\10219-01-Quarterpath Townhomes at Quarterpath Phase 3 PLAT\10219 SUB PLAT PHASE 3 REV.dwg, 8/6/2018 1:33:35 PM, hml\dwg