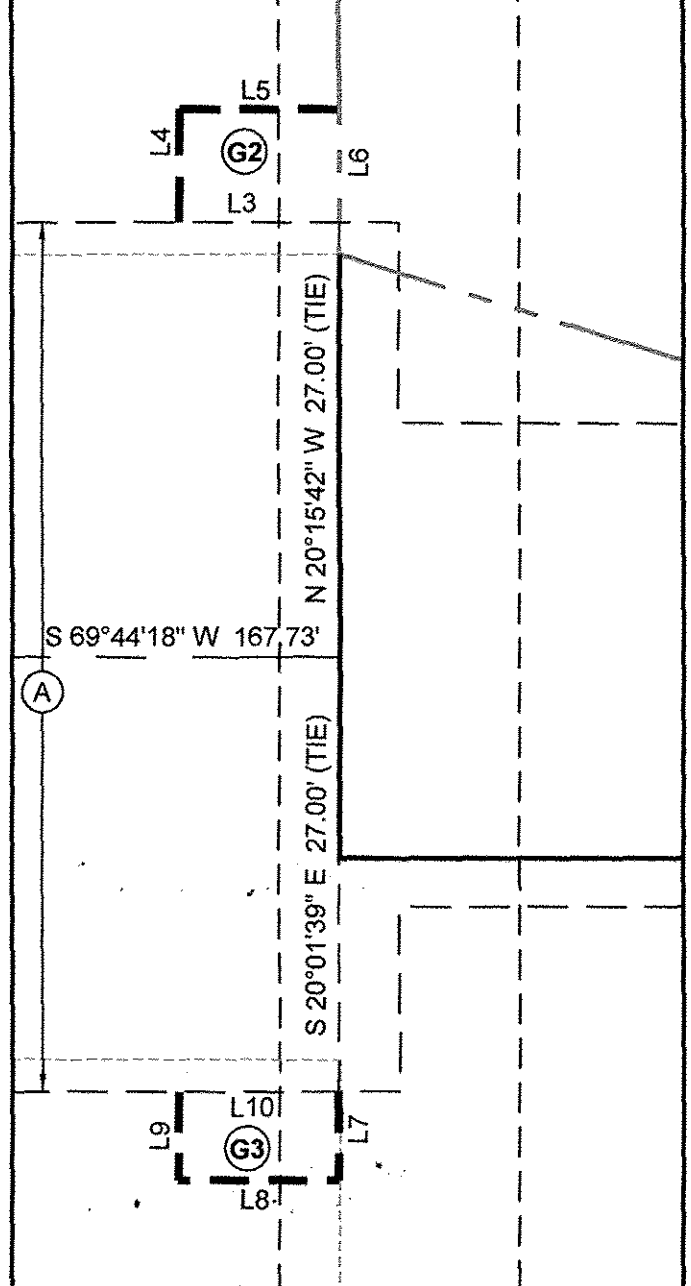


182857

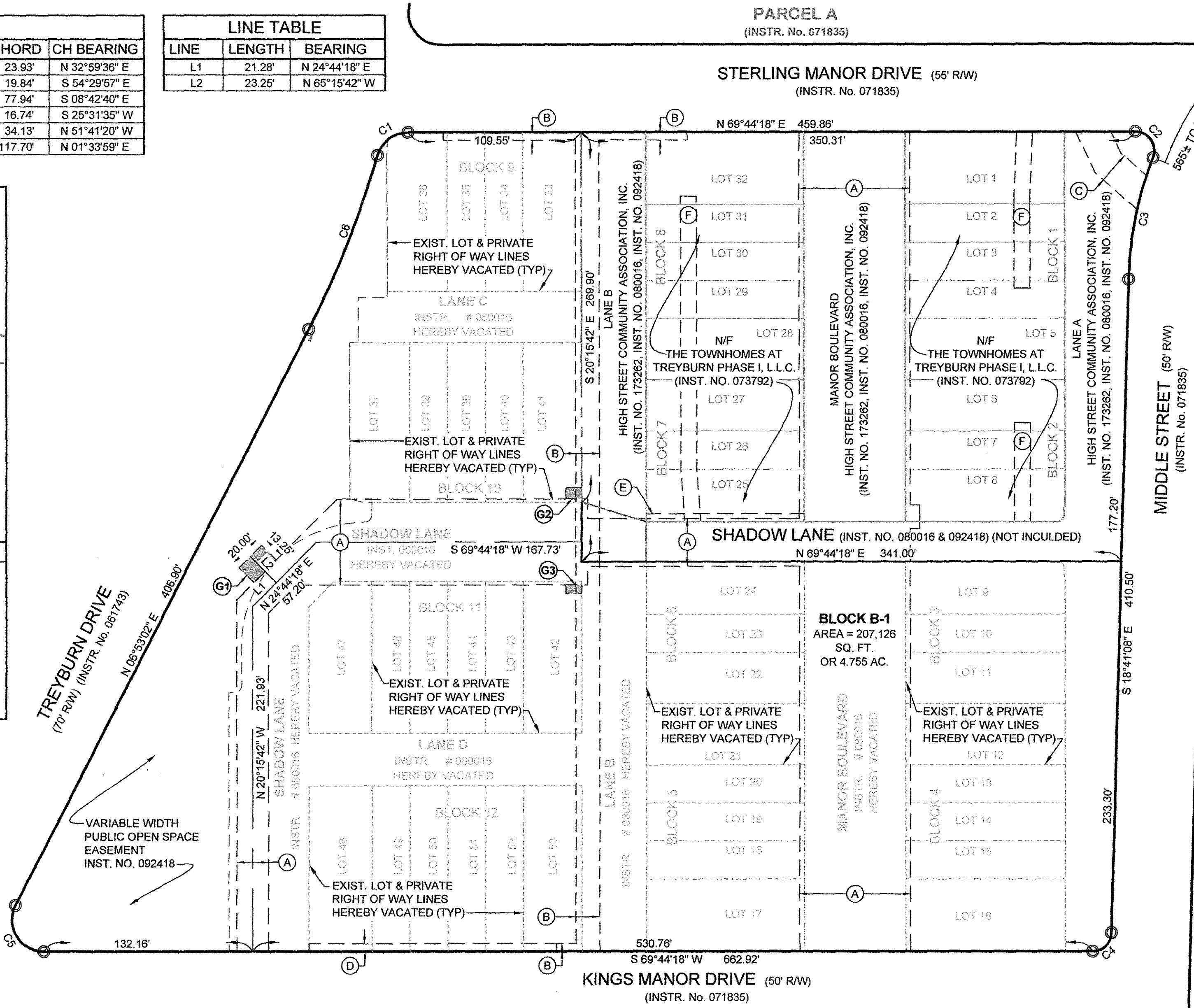
CURVE TABLE					
CURVE	RADIUS	LENGTH	DELTA	CHORD	CH BEARING
C1	20.00'	25.65'	73°29'23"	23.93'	N 32°59'36" E
C2	12.00'	23.36'	111°31'30"	19.84'	S 54°29'57" E
C3	225.00'	78.34'	19°56'56"	77.94'	S 08°42'40" E
C4	12.00'	18.52'	88°25'26"	16.74'	S 25°31'35" W
C5	20.00'	40.89'	117°08'44"	34.13'	N 51°41'20" W
C6	635.00'	117.87'	10°38'07"	117.70'	N 01°33'59" E

LINE TABLE		
LINE	LENGTH	BEARING
L1	21.28'	N 24°44'18" E
L2	23.25'	N 65°15'42" W

DETAIL OF 'G2' & 'G3' NOT TO SCALE



EASEMENT LINE TABLE		
LINE	LENGTH	BEARING
L3	10.00'	N 69°44'18" E
L4	7.00'	N 20°15'42" W
L5	10.00'	S 69°44'18" W
L6	7.00'	S 20°15'42" E
L7	5.50'	S 20°15'42" E
L8	10.00'	N 69°44'18" E
L9	5.50'	N 20°15'42" W
L10	10.00'	S 69°44'18" W

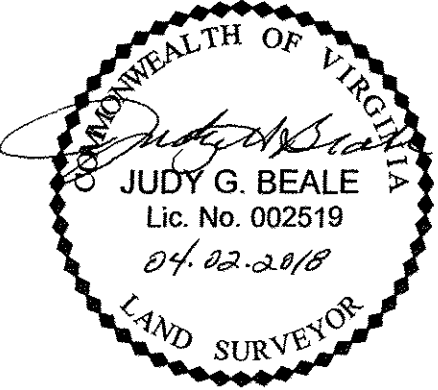


- (A) VARIABLE WIDTH PUBLIC UTILITY EASEMENT (INST. No. 071835)
 - (B) VARIABLE WIDTH PRIVATE DRAINAGE EASEMENT (INST. No. 071835)
 - (C) 20' PRIVATE DRAINAGE EASEMENT. (INST. No. 071835)
 - (D) 5' WATER LINE EASEMENT (INST. No. 071835)
 - (E) 5' PRIVATE PEDESTRIAN ACCESS EASEMENT (INST. No. 080016)
 - (F) 10' PRIVATE DRAINAGE EASEMENT (INST. No. 080016)
 - (G1) 20' X 13.25' PUBLIC UTILITY EASEMENT HEREBY DEDICATED TO THE CITY OF WILLIAMSBURG. AREA = 265 SQ. FT. OR 0.006 AC.
 - (G2) 10' X 7' PUBLIC UTILITY EASEMENT HEREBY DEDICATED TO THE CITY OF WILLIAMSBURG. AREA = 70 SQ. FT. OR 0.002 AC.
 - (G3) 10' X 5.5' PUBLIC UTILITY EASEMENT HEREBY DEDICATED TO THE CITY OF WILLIAMSBURG. AREA = 55 SQ. FT. OR 0.001 AC.
- TOTAL AREA(S) OF PUBLIC UTILITY EASEMENT(S) HEREBY DEDICATED TO THE CITY OF WILLIAMSBURG. AREA = 390 SQ. FT. OR 0.009 AC.

SEE SHEET 1 OF 2 FOR NOTES & CERTIFICATIONS

LEGEND

- IP(S) IRON PIN TO BE SET
- IP(F) IRON PIN FOUND
- NAIL(S) NAIL TO BE SET
- NAIL(F) NAIL FOUND
- PIPE(F) IRON PIPE FOUND



RESUBDIVISION OF
LOTS 9-11 BLOCK 3, LOTS 12-16 BLOCK 4, LOTS 17-21 BLOCK 5, LOTS 22-24 BLOCK 6, LOTS 33-36 BLOCK 9, LOTS 37-41 BLOCK 10, LOTS 42-47 BLOCK 11, LOTS 48-53 BLOCK 12; LANE C; LANE D; THE SOUTHERLY PORTIONS OF MANOR BOULEVARD, LANE A & LANE B; AND A PORTION OF SHADOW LANE
 (INST. No. 080016, INSTR. No. 173267)
 WILLIAMSBURG, VIRGINIA

DES. N/A JOB NO. 77606.05
 DRN. JGB SCALE 1"=50'
 CKD. JGB DATE 07-29-2017

76 INDEPENDENCE PKWY
 SUITE 100
 CHESAPEAKE, VA 23320
 757.549.3549
 FAX: 757.549.3450

WOOLPERT

SHEET NO. 2 OF 2
 FILE NO. Parcel B Resub.dwg

2 Large/Small Plat(s) Recorded herewith as # 182857

VIRGINIA:
 IN THE CLERK'S OFFICE OF THE CIRCUIT COURT OF THE CITY OF WILLIAMSBURG, VIRGINIA ON THIS 17th DAY OF May, 2018, THIS PLAT WAS RECEIVED AND ADMITTED TO RECORD IN INSTRUMENT NUMBER 182857 AT 10:44am
 TESTE: **MONA A. FOLEY, CLERK** CLERK *Jenny Zebilly, D.C.*

REV. 01-31-2018 - ADDED NOTE 8, ADDED UTILITY EASEMENTS, VACATED PRIVATE STREETS
 REV. 01-15-2018 - EDITED NOTE 3 REGARDING EASEMENTS TO REMAIN