

CURVE TABLE					
CURVE	RADIUS	LENGTH	DELTA	CHORD	CH BEARING
C1	815.00'	332.96'	23°24'27"	330.65'	N 05°00'14" W
C2	20.00'	22.00'	63°02'18"	20.91'	N 38°13'14" W
C3	12.00'	18.85'	90°00'00"	16.97'	S 65°15'42" E
C4	525.00'	90.49'	09°52'33"	90.38'	S 25°11'59" E

KINGS MANOR DRIVE  
(50' R/W)  
INST. 071835

N69°44'18"E 707.92'

IR(F)

IR(F)

MIDDLE STREET  
(50' R/W)  
(INST. 071835)

S20°15'42"E 194.32'

IR(F)

C4

IR(F)

IR(F)

IP(F)

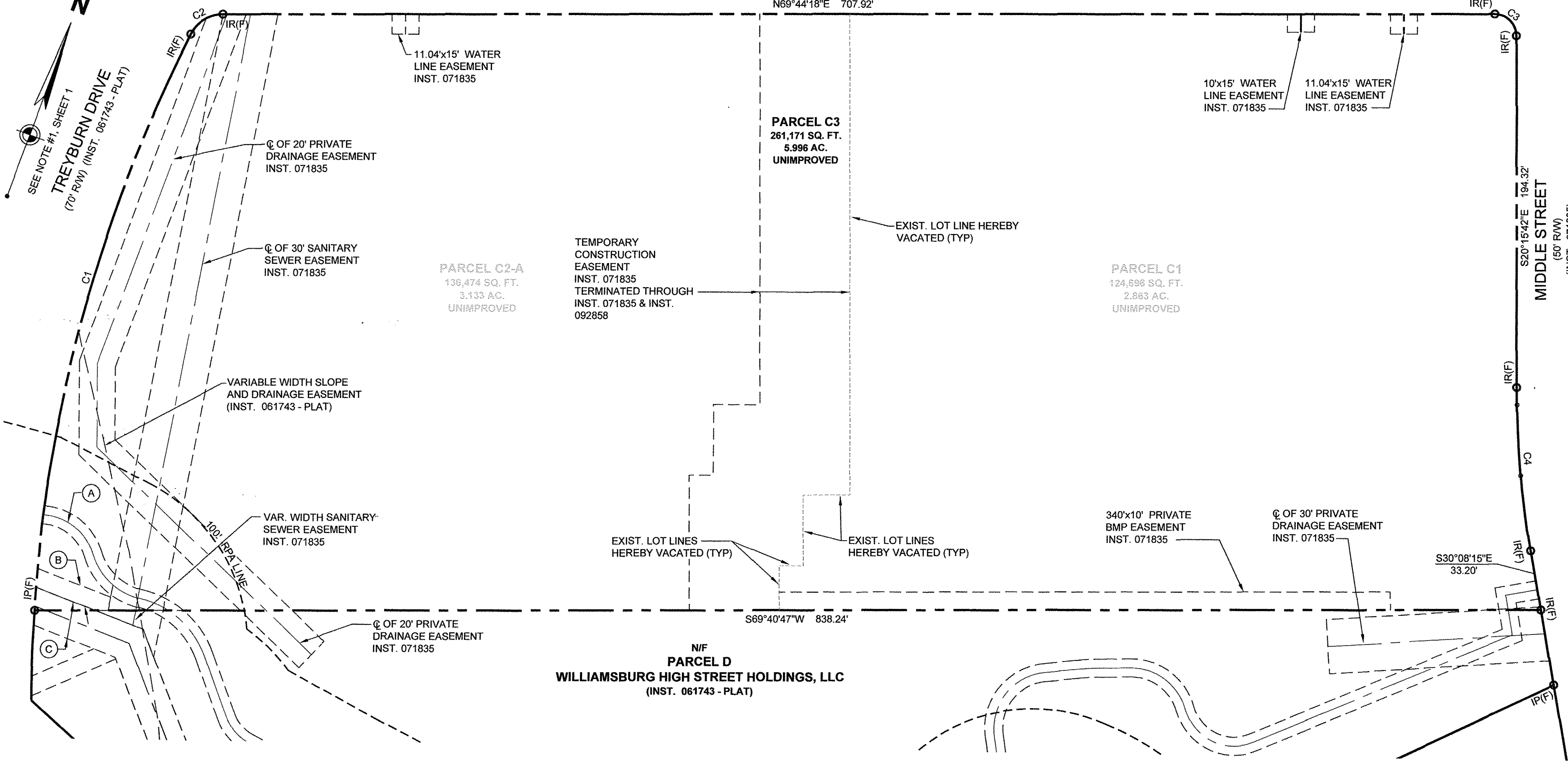
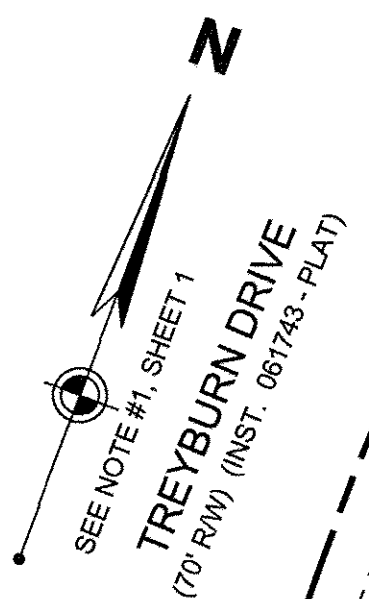
S69°40'47"W 838.24'

N/F  
PARCEL D  
WILLIAMSBURG HIGH STREET HOLDINGS, LLC  
(INST. 061743 - PLAT)

PARCEL C3  
261,171 SQ. FT.  
5.996 AC.  
UNIMPROVED

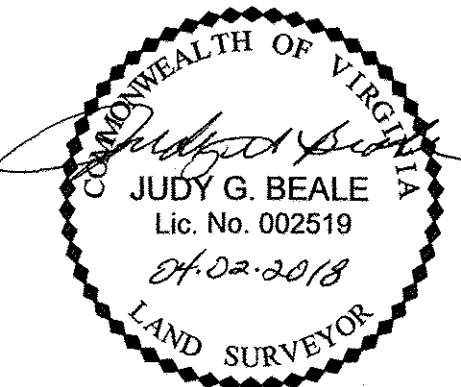
PARCEL C2-A  
136,474 SQ. FT.  
3.133 AC.  
UNIMPROVED

PARCEL C1  
124,696 SQ. FT.  
2.863 AC.  
UNIMPROVED



2 Large/Small Plat(s) Recorded  
herewith as # 182856

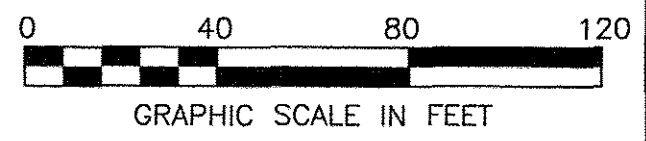
VIRGINIA:  
IN THE CLERK'S OFFICE OF THE CIRCUIT COURT OF THE CITY OF WILLIAMSBURG,  
VIRGINIA ON THIS 17<sup>th</sup> DAY OF May, 2018, THIS PLAT WAS RECEIVED AND  
ADMITTED TO RECORD IN INSTRUMENT NUMBER 182856 AT 10:37am  
TESTE: MONA A. FOLEY, CLERK CLERK Judy Zubillaga D.C.



- (A) C OF 10' PEDESTRIAN ACCESS EASEMENT INST. 071835
- (B) VARIABLE WIDTH SANITARY SEWER EASEMENT INST. 071835
- (C) CITY OF WILLIAMSBURG SANITARY EASEMENT OF UNSPECIFIED WIDTH (D.B. 48 PG. 215)

**LEGEND**

- IP(S) IRON PIN TO BE SET
- IP(F) IRON PIN FOUND
- NAIL(S) NAIL TO BE SET
- ⊗ NAIL(F) NAIL FOUND
- PIPE(F) IRON PIPE FOUND



SEE SHEET 1 OF 2 FOR NOTES & CERTIFICATIONS

RESUBDIVISION  
OF  
PARCEL C1 & PARCEL C2-A  
(INSTR. No. 071835)  
WILLIAMSBURG, VIRGINIA



676 INDEPENDENCE PKWY  
SUITE 100  
CHESAPEAKE, VA 23320  
757.549.3549  
FAX: 757.549.3450

DES.	N/A	JOB NO.	77606.06
DRN.	JGB	SCALE	1"=40'
CKD.	JGB	DATE	01-31-2018

SHEET NO. 2 OF 2  
FILE NO. Parcel C Resub.dwg