

180899



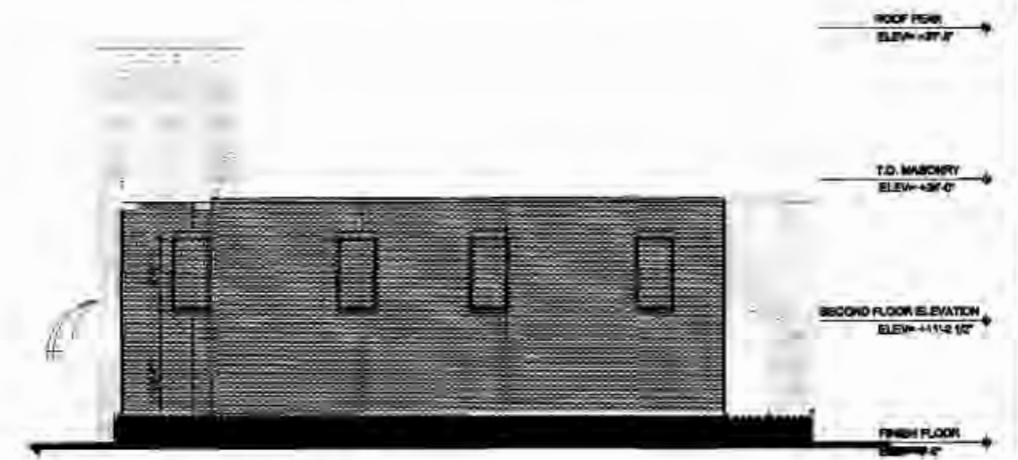
**A WEST ELEVATION**  
SCALE: 1/8" = 1'-0"



**B EAST ELEVATION**  
SCALE: 1/8" = 1'-0"



**C NORTH ELEVATION**  
SCALE: 1/8" = 1'-0"



**D SOUTH ELEVATION**  
SCALE: 1/8" = 1'-0"

Basement  
FINISH FLOOR  
ELEV -10'-0"

2 Large & 6 Large/Small Plat(s) Recorded  
herewith as # 180899

City of Williamsburg & County of James City  
Circuit Court: This PLAT was recorded on  
Feb. 1, 2018  
at 3:26 AM/PM, PB — PG —  
Document # 180899  
MONA A. FOLEY, CLERK  
*Mona A. Foley*, Clerk

113 CLARK  
WILLIAMSBURG VIRGINIA 23186  
PHONE: 757-536-6377  
WWW.AH2.COM

architecture  
**AH2**

CONDOMINIUM DOCUMENTS  
ELEVATIONS  
THE SHOPS AT SECOND STREET  
2ND FLOOR  
WILLIAMSBURG VIRGINIA 23186

6