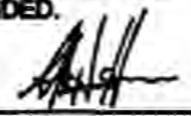


180899

I, AHMED H. HASSAN, A DULY REGISTERED ARCHITECT, DO HEREBY CERTIFY THAT THIS PLAN FOR 2ND STREET SHOPPES CONDOMINIUM COMPLIES WITH THE PROVISIONS OF VIRGINIA CODE ANNOTATE SUBSECTION 55-79.58 (B), AS AMENDED.



AHMED H. HASSAN, AIA

NOVEMBER 1, 2017

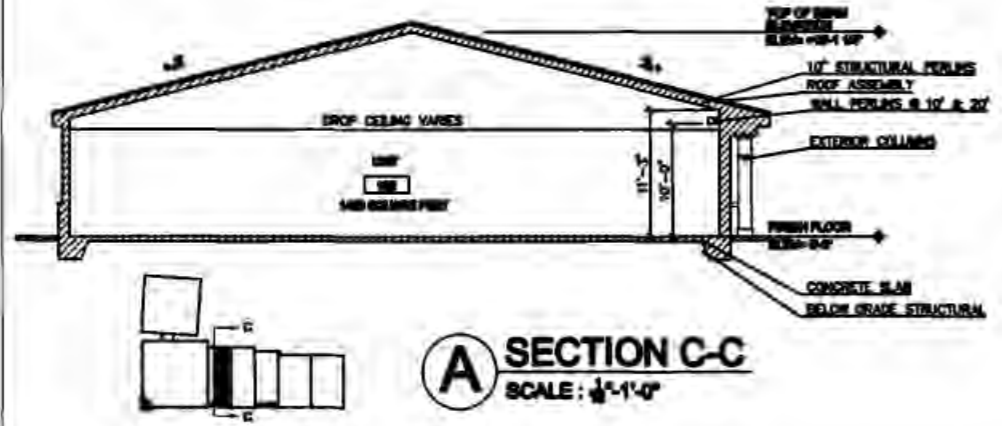
DATE



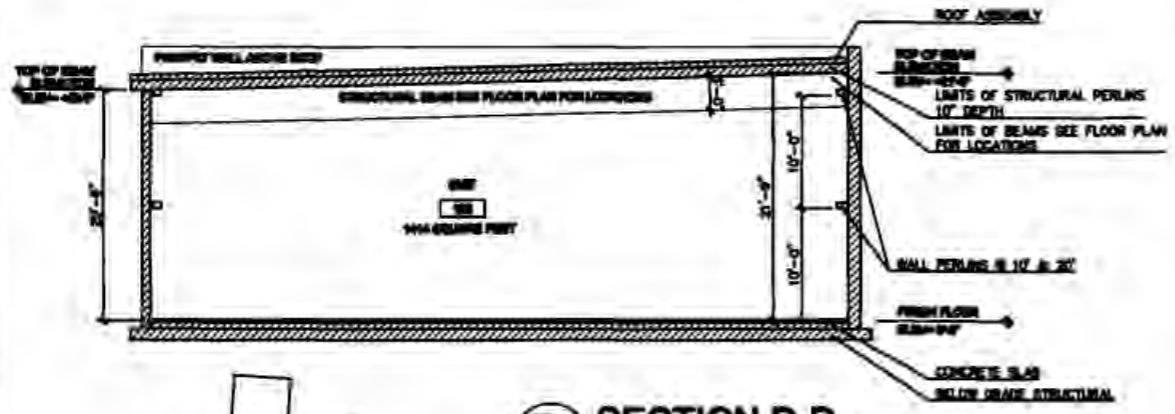
- NOTE:
1. CONDOMINIUM LIMITS ARE MEASURED FROM INTERIOR FACE OF GYPSUM WALL BOARD.
  2. SEE SITE PLAN FOR HORIZONTAL PERIMETER DIMENSIONS

UNIT	AREA	NOTES
B100	3,394 SQUARE FEET	
100	3,394 SQUARE FEET	
101	4,041 SQUARE FEET	INCLUDES CONNECTION TO CONDO 100
101.B	189 SQUARE FEET	COMMON AREA START TO SECOND LEVEL
102	1,472 SQUARE FEET	
103	1,438 SQUARE FEET	
104	1,404 SQUARE FEET	
105	1,423 SQUARE FEET	
106	2,394 SQUARE FEET	
200	2,374 SQUARE FEET	
201	891 SQUARE FEET	

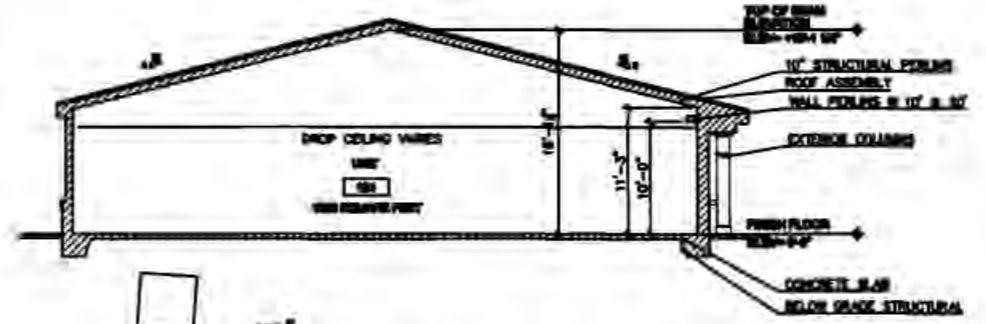
**F** UNIT AREA CONDOMINIUM LIMITS  
SCALE: NOT TO SCALE



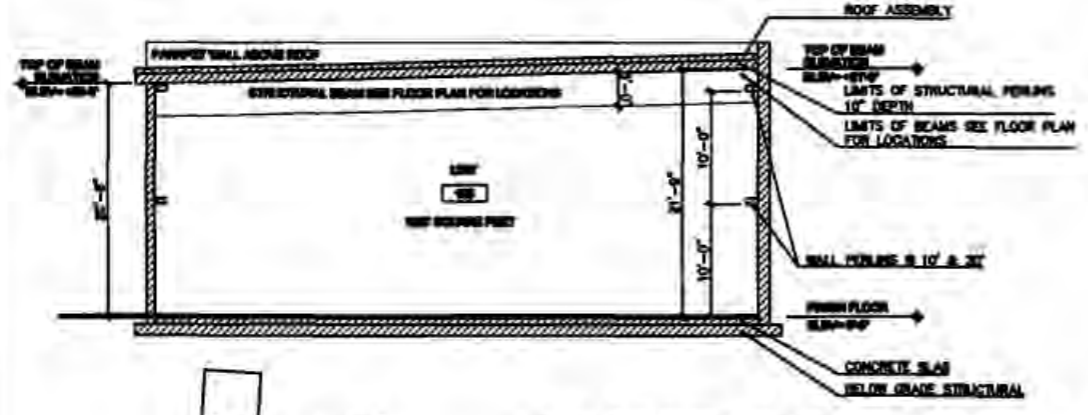
**A** SECTION C-C  
SCALE: 1/4"=1'-0"



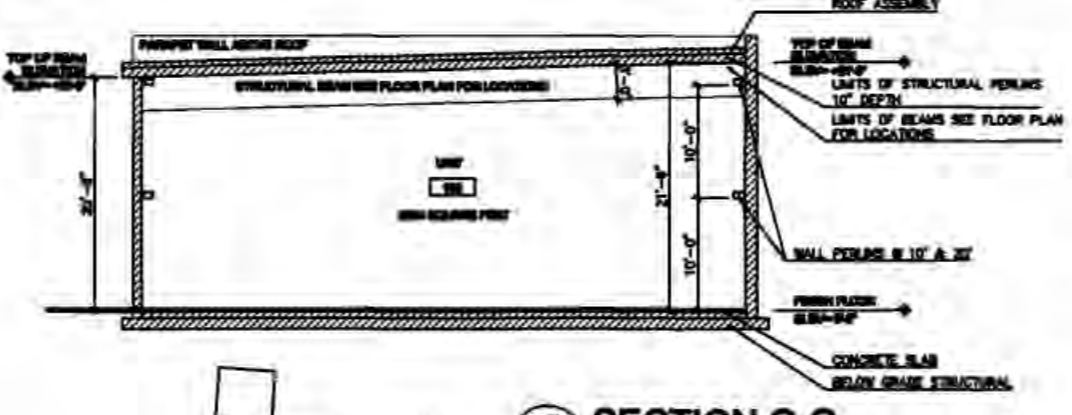
**B** SECTION D-D  
SCALE: 1/4"=1'-0"



**C** SECTION E-E  
SCALE: 1/4"=1'-0"



**D** SECTION F-F  
SCALE: 1/4"=1'-0"



**E** SECTION G-G  
SCALE: 1/4"=1'-0"

2 Large &  
6 Large/Small Plats) Recorded  
herewith as # 180899

City of Williamsburg & County of James City  
Circuit Court: This PLAT was recorded on  
Feb. 1, 2018  
at 3:26 AM/PM, PB PG  
Document # 180899  
MONA A. FOLEY, CLERK  
D. J. ... Clerk

HATCH KEY

[Hatched Box]	CONCRETE
[Hatched Box]	COMMON WALL
[Hatched Box]	UNIT COMMON WALL

112 DUNED WILLIAMSBURG VIRGINIA 23186 PHONE: 757-308-0677 WWW.AH2STUDIO.COM	architecture <b>AH2</b>	CONDOMINIUM DOCUMENTS BUILDING CONDOMINIUM SECTIONS THE SHOPS AT SECOND STREET 311 SECOND STREET WILLIAMSBURG VIRGINIA 23186	DATE: JULY 18, 2017 SCALE: AS SHOWN SHEET # 5
--	----------------------------	--	---