

180899

I, AHMED H. HASSAN, A DULY REGISTERED ARCHITECT, DO HEREBY CERTIFY THAT THIS PLAN FOR 2ND STREET SHOPPES CONDOMINIUM COMPLIES WITH THE PROVISIONS OF VIRGINIA CODE ANNOTATE SUBSECTION 55-79.58 (B), AS AMENDED.

A.H.H.
 AHMED H. HASSAN, AIA

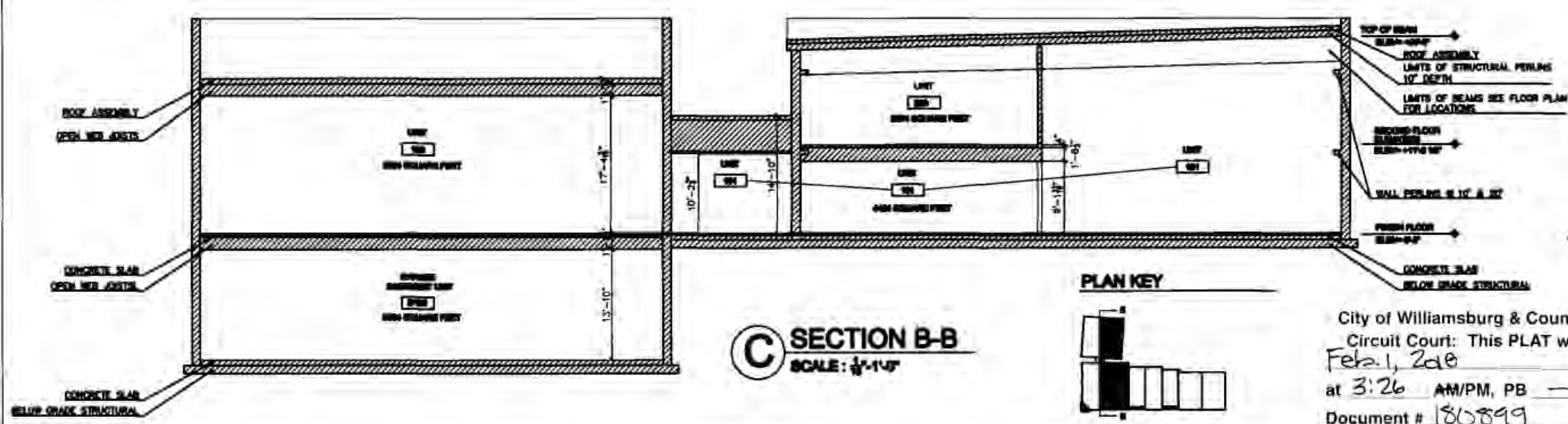
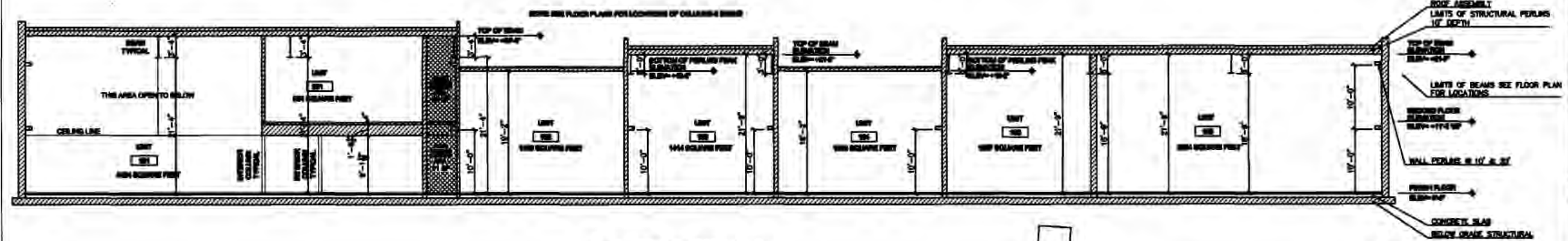
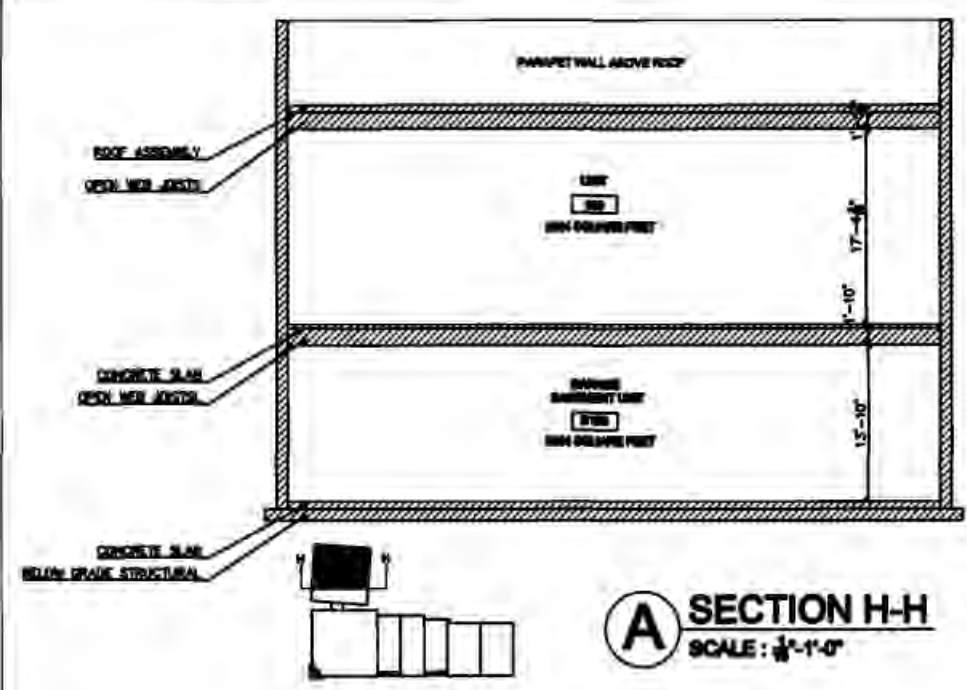
NOVEMBER 1, 2017
 DATE



UNIT	AREA	NOTES
B100	3,384 SQUARE FEET	
100	3,384 SQUARE FEET	
101	4,841 SQUARE FEET	INCLUDES CONNECTION TO CONDO 100
101.B	188 SQUARE FEET	COMMON AREA STAIR TO SECOND LEVEL
102	1,472 SQUARE FEET	
103	1,429 SQUARE FEET	
104	1,404 SQUARE FEET	
105	1,433 SQUARE FEET	
106	3,384 SQUARE FEET	
200	2,374 SQUARE FEET	
201	851 SQUARE FEET	

E UNIT AREA CONDOMINIUM LIMITS
 SCALE: NOT TO SCALE

- NOTE:
1. CONDOMINIUM LIMITS ARE MEASURED FROM INTERIOR FACE OF GYPSUM WALL BOARD.
 2. SEE SITE PLAN FOR HORIZONTAL PERIMETER DIMENSIONS



D SECTION I-I
 SCALE: 1/4"=1'-0"

City of Williamsburg & County of James City
 Circuit Court: This PLAT was recorded on
 Feb. 1, 2018
 at 3:26 AM/PM, PB PG
 Document # 180899
 MONA A. FOLEY, CLERK
Mona A. Foley Clerk

112 DUNES WILLIAMSBURG VIRGINIA 23168 PHONE: 757-308-0677 WWW.AH2studio.com	architecture AH2	CONDOMINIUM DOCUMENTS BUILDING CONDOMINIUM SECTIONS THE SHOPS AT SECOND STREET 511 SECOND STREET WILLIAMSBURG VIRGINIA 23168	DATE: JULY 06, 2017 BY: AS NOTED BY: AHH PAGE NO: 4
--	----------------------------	--	--

2 Large & 6 Large/Small Plat(s) Recorded herewith as # 180899