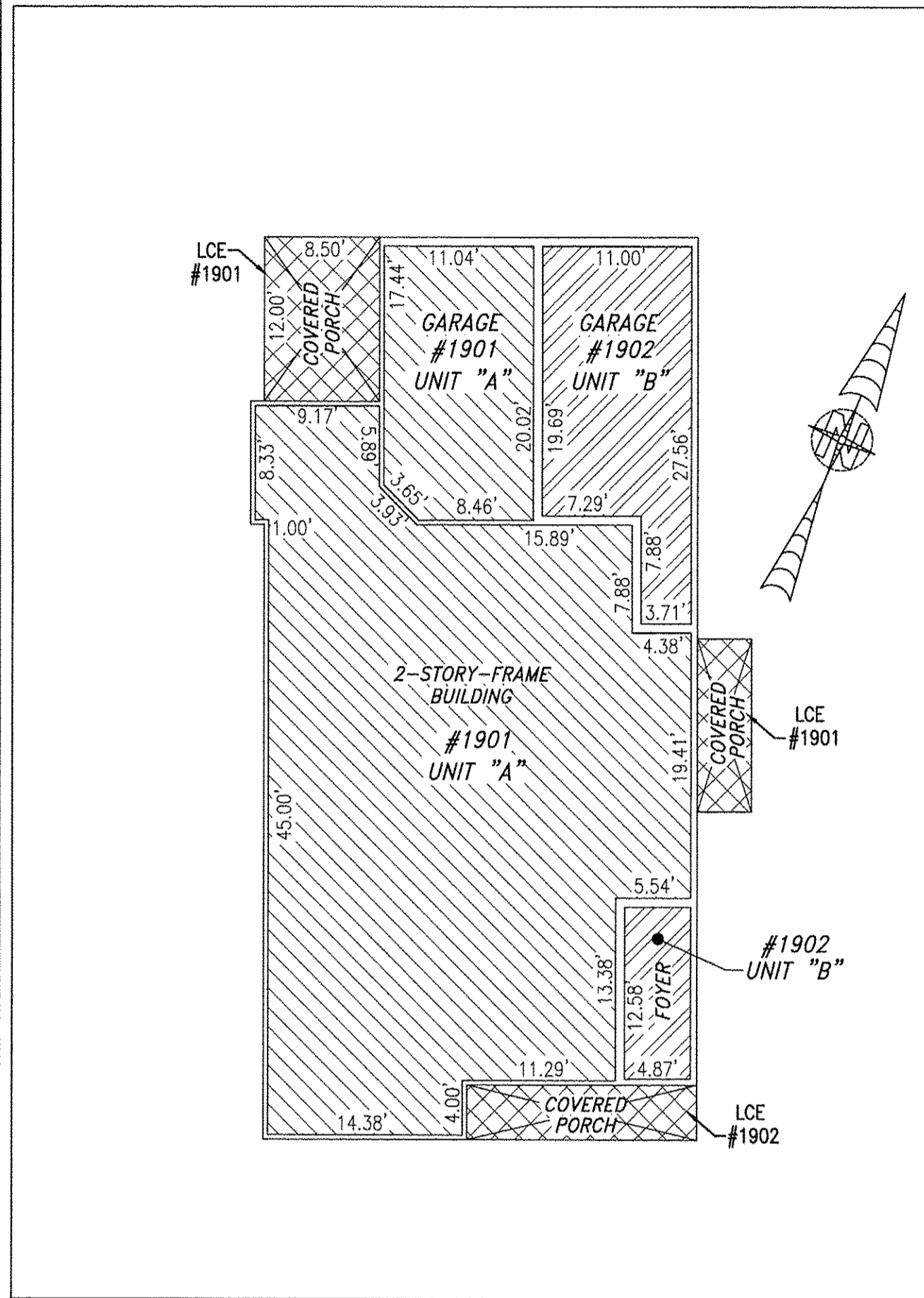
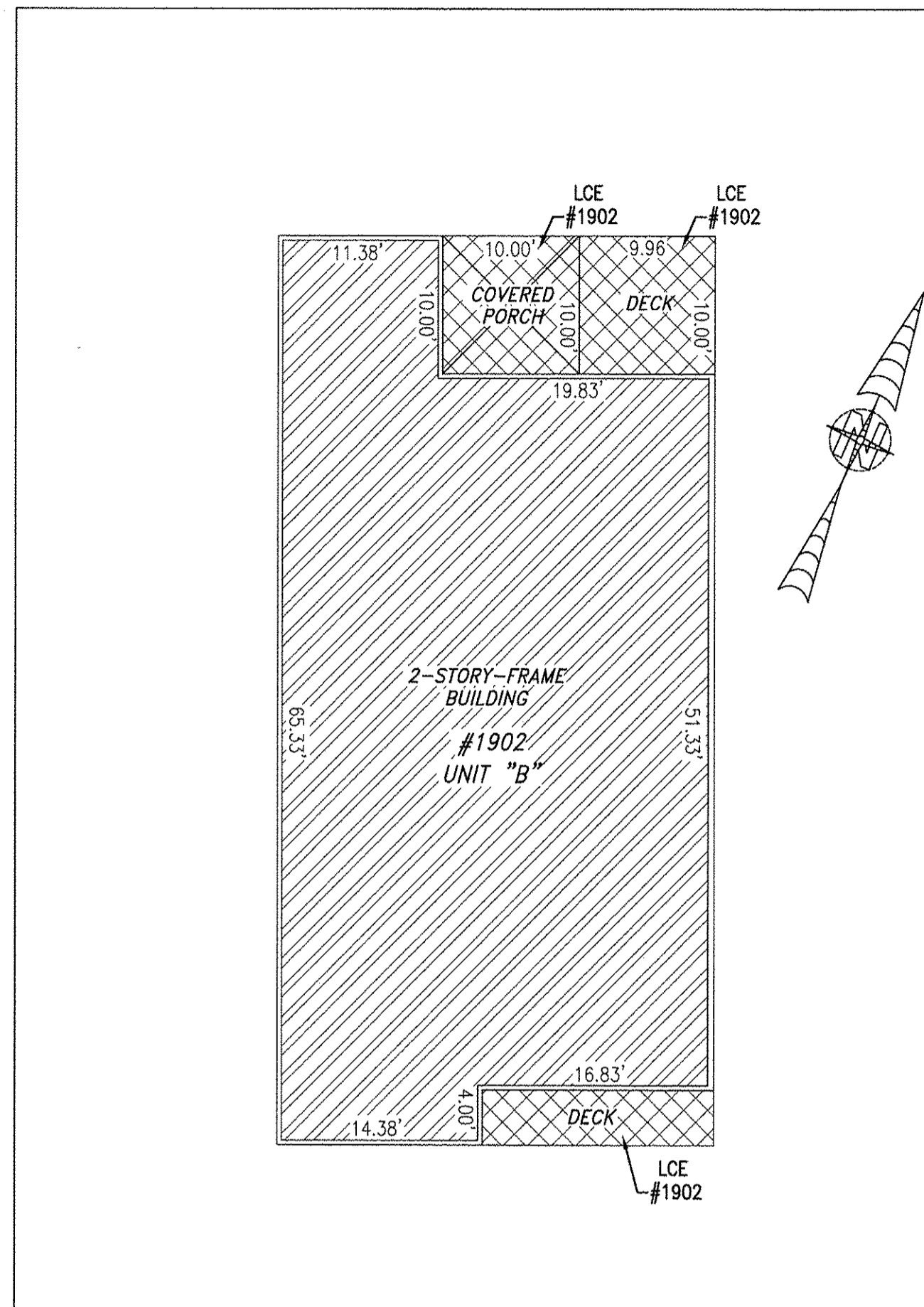


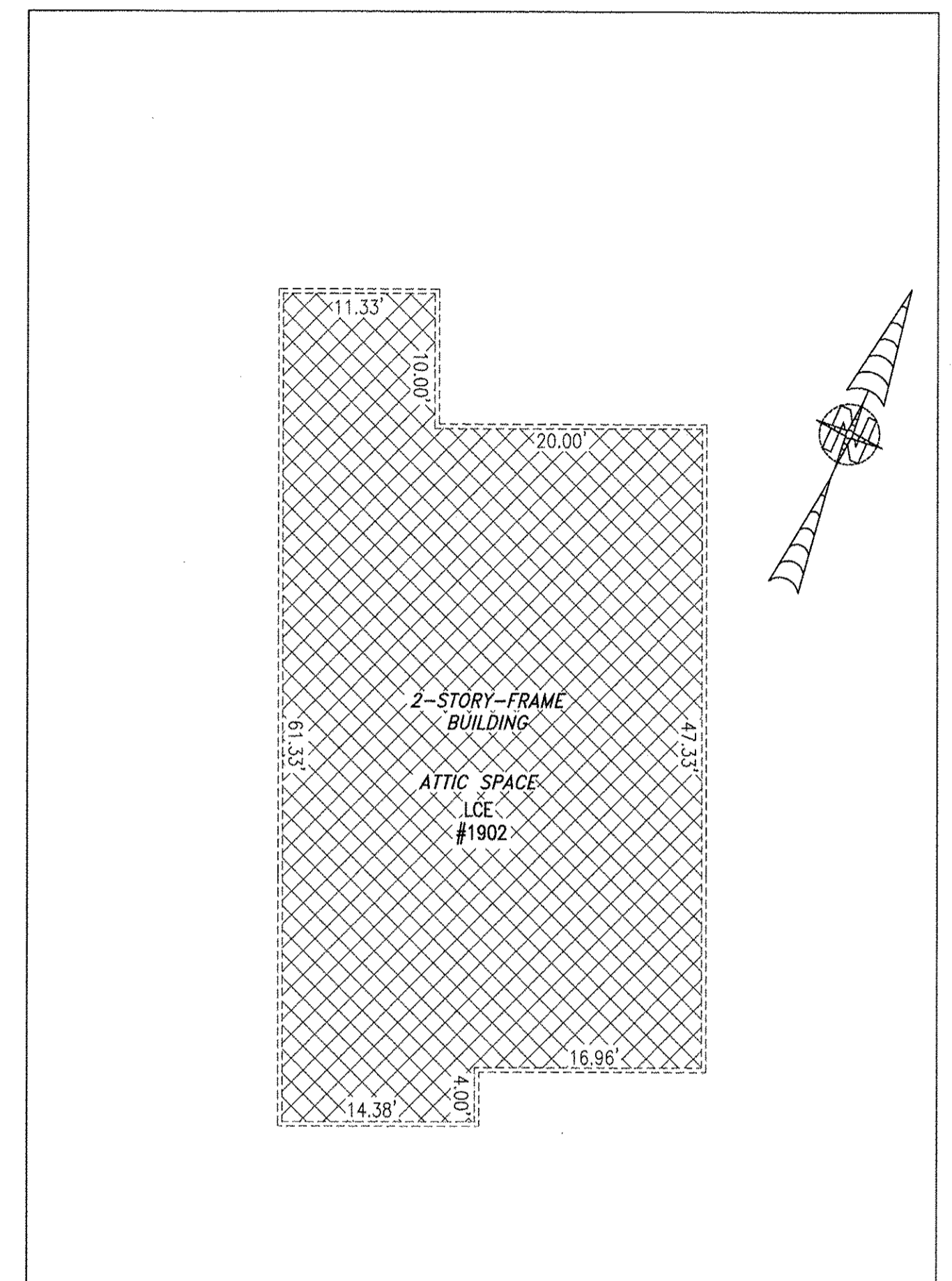
**BUILDING 19 (DUPLEX)**



**FIRST FLOOR**



**SECOND FLOOR**



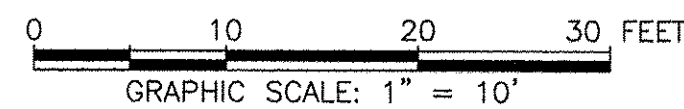
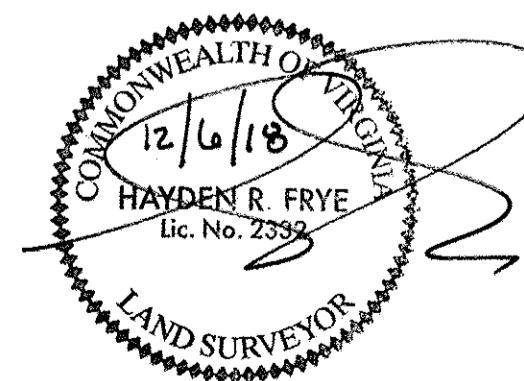
**THIRD FLOOR**

I HEREBY CERTIFY THAT THIS PLAN IS ACCURATE AND THAT IT COMPLIES WITH THE PROVISIONS OF THE CODE OF VIRGINIA OF 1950 AS AMENDED, § 55-79.58 AND I FURTHER CERTIFY THAT ALL UNITS THEREOF DEPICTED HEREON, PURSUANT TO THE CODE OF VIRGINIA § 55-79.58B, ARE SUBSTANTIALLY COMPLETE.

5 Large/Small Plat(s) Recorded  
herewith as # 180019705

UNIT ID	UNIT DESCRIPTION	UNIT ADDRESS
A	-INDICATES AREA OF UNIT 1901	#1901 PROMENADE LANE
B	-INDICATES AREA OF UNIT 1902	#1902 PROMENADE LANE
	-INDICATES COMMON ELEMENT	
	-INDICATES LIMITED COMMON ELEMENT	

City of Williamsburg & County of James City  
Circuit Court: This PLAT was recorded on  
11 Dec 2018  
at 1:10 AM/PM, PB - PG -  
Document # 180019705  
MONA A. FOLEY, CLERK  
*Mona A. Foley*, Clerk

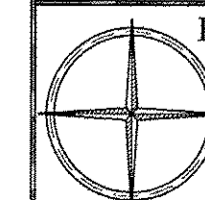


JCC Subdivision Agent Approval Not Required *ell*

THIS SHEET: FLOOR PLANS

**PHASE 19**  
**CONDOMINIUM PLAT AND PLAN**  
OF  
**THE PROMENADE**  
AT  
**JOHN TYLER**  
A CONDOMINIUM  
JAMES CITY COUNTY, VIRGINIA

Jo# 160921



Hayden Frye and Associates, Inc.

**Land Surveyors**

333 KELLAM ROAD, SUITE 200  
VIRGINIA BEACH, VA., 23462  
PH: (757) 491-7228 FX: (757) 491-7229

DATE: DECEMBER 6, 2018

SCALE: 1"=10'

SHEET 5 OF 5 THIS PHASE